

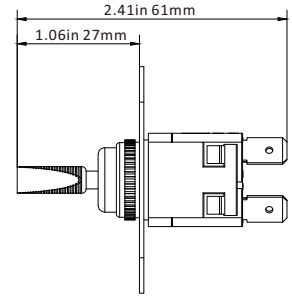
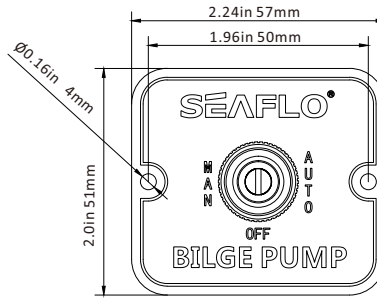
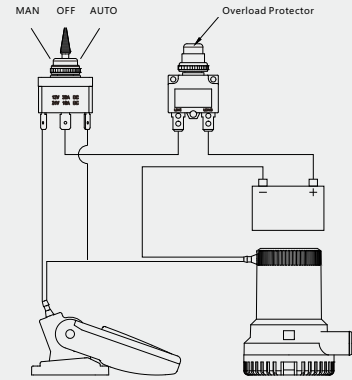
## 2/3-WAY SWITCH PANEL

### Features & Benefits

- Black aluminum panel
- Control any pump equipped with a float switch
- Prevent impact of intermittent high current
- Toggle of SFSP-01 has three positions (automatic, off, or manual)
- Toggle of SFSP-02 has "on" and "off" providing fingertip control

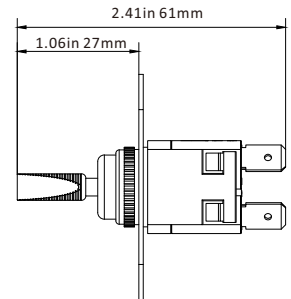
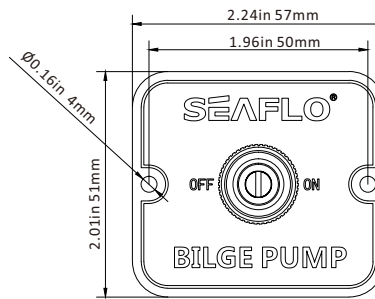


Blister



### STANDARD PUMP CONFIGURATIONS

Model	Volts	Led Light	Panel Material	Position	N.W.	Dimension
SFSP-01	12V & 24V	Yes	Aluminum	MAN-OFF-AUTO	45 g	57 mm*51 mm



### STANDARD PUMP CONFIGURATIONS

Model	Volts	Led Light	Panel Material	Position	N.W.	Dimension
SFSP-02	12V & 24V	Yes	Aluminum	OFF-ON	45 g	57 mm*51 mm