

**The Ameena Group Ltd**

Suite 313

28 Old Brompton Road

London SW7 3SS

t: +44 (0)788 192 7267

w: theameenagroup.com

## Ravensbourne Apartments, Fulham Riverside SW6

£1,200,000 Leasehold



- 2 Bedrooms + Study • 2 Bathrooms + 1 Guest WC • 1,314 sqft/ 122.12 sqm internal area • Underground Parking •
- Balcony • 7<sup>th</sup>/8<sup>th</sup> Floor Duplex • Underfloor Heating • Comfort Cooling • 24 hr Concierge •
- 990 Years Lease •

Fulham Riverside is a new river facing development located on the North side of the River, moments from Wandsworth Bridge. The development sits on a raised open green courtyard overlooking the River Thames. In house facilities include 24 hr concierge, fitness centre and underground parking. There is a large Sainsbury's on site, as well as commercial spaces for future coffee shops/restaurants.

Fulham Riverside is under 10 minutes walk from Imperial Wharf station, and multiples buses are available from your doorstep.

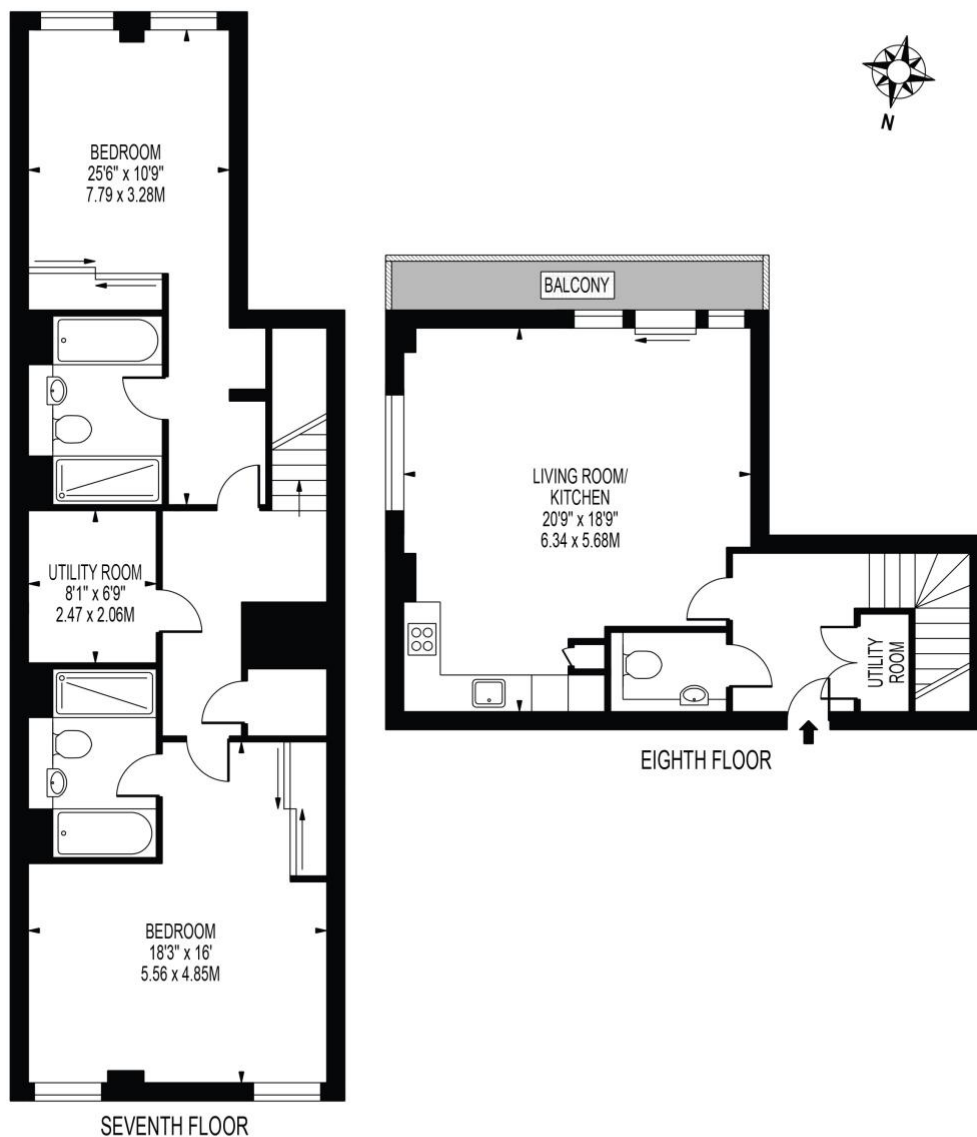






# RAVENBOURNE APARTMENTS

APPROXIMATE GROSS INTERNAL FLOOR AREA: 1314 SQ FT - 122.12 SQ M



FOR ILLUSTRATION PURPOSES ONLY

THIS FLOOR PLAN SHOULD BE USED AS A GENERAL OUTLINE FOR GUIDANCE ONLY AND DOES NOT CONSTITUTE IN WHOLE OR IN PART AN OFFER OR CONTRACT. ANY INTENDING PURCHASER OR LESSEE SHOULD SATISFY THEMSELVES BY INSPECTION, SEARCHES, ENQUIRIES AND FULL SURVEY AS TO THE CORRECTNESS OF EACH STATEMENT. ANY AREAS, MEASUREMENTS OR DISTANCES QUOTED ARE APPROXIMATE AND SHOULD NOT BE USED TO VALUE A PROPERTY OR BE THE BASIS OF ANY SALE OR LET.



For more information call on

**+44 (0) 20 3773 5759**

or email at

**ac@theameenagroup.com**

We're members of the



