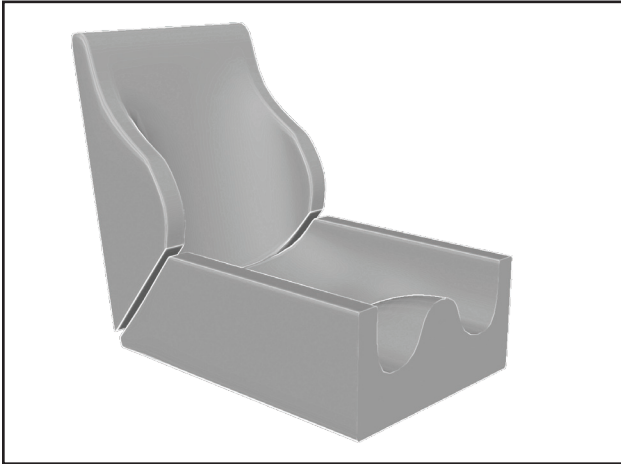


STANDARD



- Seat and back are split at the intersection where seat and back meet
- Depth and angle adjustment are available

GROWTH



- Seat and back are split at the bottom intersection where seat and back meet
- 2" added to rear of seat for growth
- Growth, depth and angle adjustment are available

PELVIC CONTROL



- Seat and back are split at the top edge of posterior pelvic wall on seat
- Back sits on top of seat
- Angle adjustment is available but no depth adjustment available