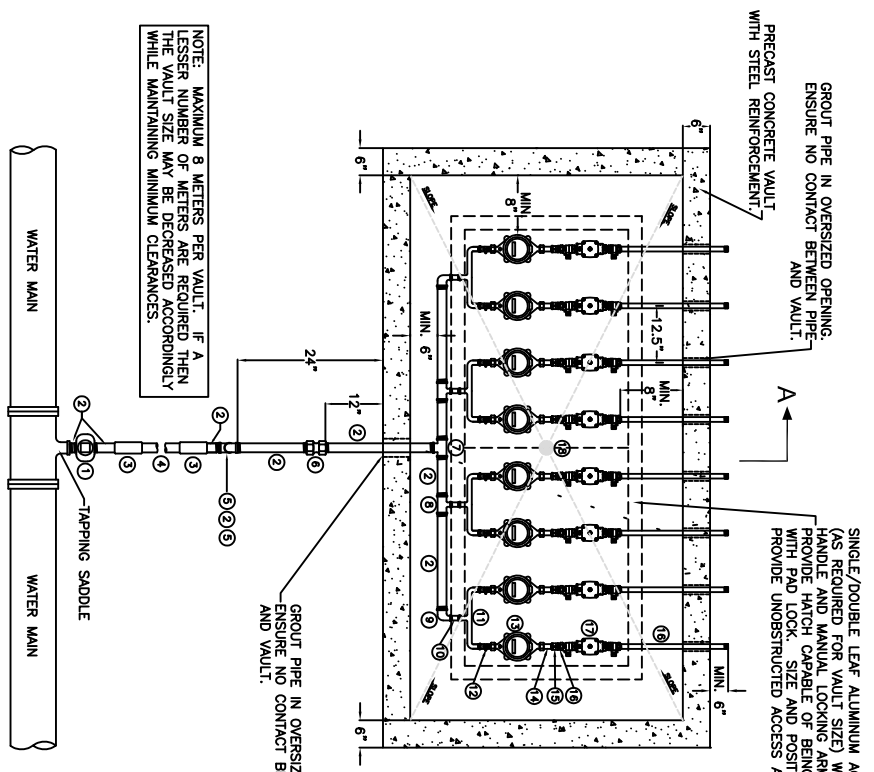


# CARROLL COUNTY WATER AUTHORITY

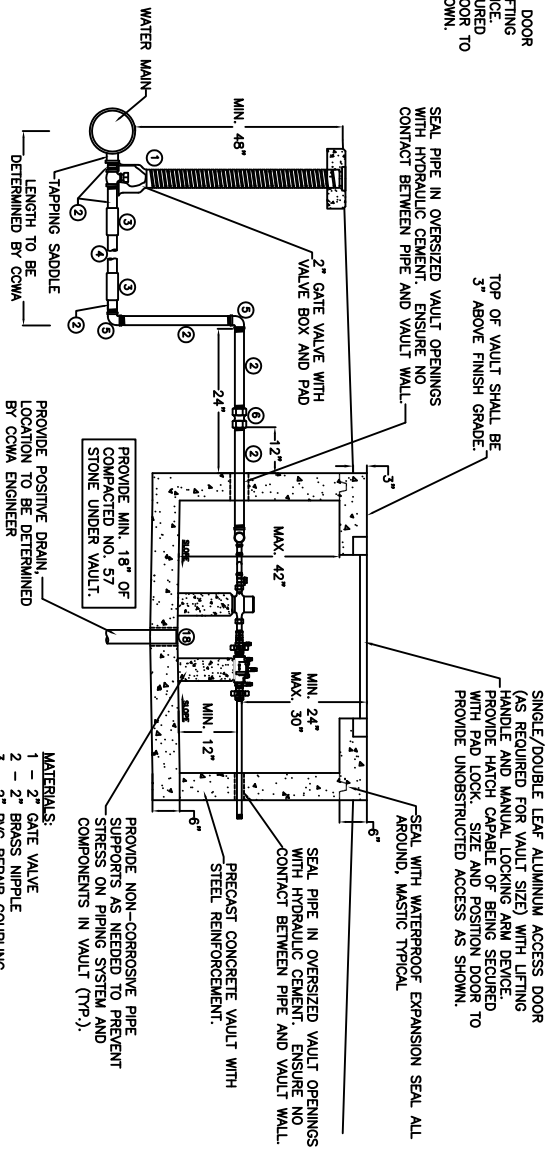
FIG. 23  
OCT. 2015



NOTE: MAXIMUM 8 METERS PER VAULT. IF A LESSER NUMBER OF METERS ARE REQUIRED THEN THE VAULT SIZE MAY BE DECREASED ACCORDINGLY WHILE MAINTAINING MINIMUM CLEARANCES.

## PLAN

# 3/4" - 1" MULTI-METER VAULT



## SECTION A - A

- GENERAL NOTES:**
1. ALUMINUM ACCESS DOOR FRAME AND COVER SHALL BE INTEGRALLY CAST IN CONCRETE VAULT TOP. PROVIDE ALUMINUM COVER SUITABLE FOR A MIN. 150 PSF LIVE LOAD.
  2. ACCESS DOOR SHALL BE SIZED AND POSITIONED TO PROVIDE CLEAR UNOBSTRUCTED ACCESS TO CURB STOPS, METERS, AND BACKFLOW PREVENTION DEVICES AS SHOWN.
  3. ALL FITTINGS AND PIPING IN VAULT SHALL BE BRASS OR BRONZE.
  4. CONCRETE CAP BLOCK(S) REQUIRED FROM UNDISTURBED EARTH TO VALVE BOTTOM AT CCWA ENGINEER'S DISCRETION, NOT SHOWN.
  5. PROVIDE MIN. 3" DIAMETER DRAIN PIPE CONNECTED TO FLOOR DRAIN. PIPE MUST MAINTAIN A MIN. OF 1% SLOPE AND DAYLIGHT TO FINISHED GRADE OR INTO STORM SEWER.
  6. VAULT SHALL BE COVERED WITH A REMOVABLE PRECAST CONCRETE COVER. THE COVER SHALL BE 6" THICK WITH STEEL REINFORCEMENT. COVER SHALL BE SEALED TO TOP OF WALLS USING GASKET MATERIAL.
  7. PROVIDE MIN. 18" OF NO. 57 STONE UNDER PRECAST CONCRETE VAULT.
  8. PROVIDE NON-CORROSIVE PIPE SUPPORTS AS NEEDED TO PREVENT STRESS ON PIPING SYSTEM AND COMPONENTS IN VAULT.
  9. TOP OF VAULT SHALL EXTEND 3" ABOVE FINISH GRADE. PROVIDE DRAINAGE AWAY FROM VAULT IN ALL DIRECTIONS.
  10. IF ODD NUMBER OF METERS ARE REQUIRED, REPLACE INNER MOST "U" BRANCH WITH BRASS NIPPLE AND REDUCER, AS REQUIRED TO MATCH METER SIZE.
- MATERIALS:**
- 1- 2" GATE VALVE
  - 2- 2" BRASS NIPPLE
  - 3- 2" PVC REPAIR COUPLING, CERTANTITE 742026
  - 4- 2" PVC PIPE, SDR 13.5, 315 PSI
  - 5- 2" BRASS 90° BEND
  - 6- 2" BRASS UNION
  - 7- 2" X 2" TEE
  - 8- 2" X 1" REDUCING TEE
  - 9- 2" X 1" REDUCING 90° BEND
  - 10- 1" BRASS NIPPLE
  - 11- FORD U<sub>1</sub> 90° BRANCH, MODEL U19-43-125 OR U19-44-12.5, (SIZED FOR METER)
  - 12- CURB STOP (SIZED FOR METER), FORD B13-232H OR FORD B13-344W
  - 13- SENSUS SR 5/8" X 3/4" CUBIC FOOT METER OR SENSUS SR 1" CUBIC FOOT METER
  - 14- METER COUPLING (SIZED FOR METER), FORD C38-125-5 OR FORD C38-44-2-625
  - 15- BRASS COUPLING (SIZED FOR METER)
  - 16- BRASS NIPPLE (SIZED FOR METER)
  - 17- CHECK BACKFLOW PREVENTION DEVICES VALVES FOR RESIDENTIAL DEVELOPMENTS (FORD HRS-323) AND DOUBLE CHECK BACKFLOW PREVENTION DEVICES WITH BALL VALVES FOR COMMERCIAL DEVELOPMENTS (WILKINS MODEL 950XIT, WATTS SERIES 007, OR OTHER APPROVED)
  - 18- FLOOR DRAIN