



■ Features

- Power Rating: 30W
- Input Voltage: 120-277Vac
- Constant current design
- Output currents (350mA-2500mA)
- Fixed output current
- Efficiency to 86%
- UL Class 2 Output options available
- OVP, SCP, & Open Circuit Protection
- IP20 & IP66
- 5-year warranty



\*Product images are for illustrative purposes only and may vary from actual design.

■ Application

- Dry and Damp Locations

■ Model List \*(See part number scheme for model number details)

Model Number	Input Voltage Range	Output Power	Output Voltage	Output Current Min.	Output Current Max.	Efficiency	Certification
LXWC-030S035PS	120~277Vac ± 10%	30W	28-85V	350mA	350mA	85% @120V 86% @240V 86% @277V	-/-
LXWC-030S040PS	120~277Vac ± 10%	30W	25-75V	400mA	400mA	85% @120V 86% @240V 86% @277V	-/-
LXWC-030S045PS	120~277Vac ± 10%	30W	22-67V	450mA	450mA	85% @120V 86% @240V 86% @277V	-/-
LXWC-030S050PS*	120~277Vac ± 10%	30W	20-60V	500mA	500mA	84% @120V 85% @240V 85% @277V	UL/-
LXWC-030S060PS*	120~277Vac ± 10%	30W	17-50V	600mA	600mA	84% @120V 85% @240V 85% @277V	UL/-
LXWC-030S070PS*	120~277Vac ± 10%	30W	14-43V	700mA	700mA	84% @120V 85% @240V 85% @277V	UL/-
LXWC-030S080PS*	120~277Vac ± 10%	30W	13-38V	800mA	800mA	84% @120V 85% @240V 85% @277V	UL/cUL
LXWC-030S090PS*	120~277Vac ± 10%	30W	11-33V	900mA	900mA	84% @120V 85% @240V 85% @277V	UL/cUL
LXWC-030S100PS*	120~277Vac ± 10%	30W	10-30V	1000mA	1000mA	83% @120V 84% @240V 84% @277V	UL/cUL

LXWC-030S110PS*	120~277Vac ± 10%	30W	9-27V	1100mA	1100mA	83% @120V 84% @240V 84% @277V	UL/cUL
LXWC-030S120PS*	120~277Vac ± 10%	30W	8-25V	1200mA	1200mA	83% @120V 84% @240V 84% @277V	UL/cUL
LXWC-030S125PS*	120~277Vac ± 10%	30W	8-24V	1250mA	1250mA	83% @120V 84% @240V 84% @277V	UL/cUL
LXWC-030S130PS*	120~277Vac ± 10%	30W	8-23V	1300mA	1300mA	83% @120V 84% @240V 84% @277V	UL/cUL
LXWC-030S140PS*	120~277Vac ± 10%	30W	7-21V	1400mA	1400mA	83% @120V 84% @240V 84% @277V	UL/cUL
LXWC-030S150PS*	120~277Vac ± 10%	30W	7-20V	1500mA	1500mA	83% @120V 84% @240V 84% @277V	UL/cUL
LXWC-030S160PS*	120~277Vac ± 10%	30W	6-19V	1600mA	1600mA	83% @120V 84% @240V 84% @277V	UL/cUL
LXWC-030S170PS*	120~277Vac ± 10%	30W	6-18V	1700mA	1700mA	83% @120V 84% @240V 84% @277V	UL/cUL
LXWC-030S180PS*	120~277Vac ± 10%	30W	6-17V	1800mA	1800mA	83% @120V 84% @240V 84% @277V	UL/cUL
LXWC-030S190PS*	120~277Vac ± 10%	30W	6-16V	1900mA	1900mA	83% @120V 84% @240V 84% @277V	UL/cUL
LXWC-030S200PS*	120~277Vac ± 10%	30W	5-15V	2000mA	2000mA	83% @120V 84% @240V 84% @277V	UL/cUL
LXWC-030S210PS*	120~277Vac ± 10%	30W	5-14V	2100mA	2100mA	82% @120V 83% @240V 83% @277V	UL/cUL
LXWC-030S220PS*	120~277Vac ± 10%	30W	5-14V	2200mA	2200mA	82% @120V 83% @240V 83% @277V	UL/cUL
LXWC-030S230PS*	120~277Vac ± 10%	30W	5-13V	2300mA	2300mA	82% @120V 83% @240V 83% @277V	UL/cUL
LXWC-030S240PS*	120~277Vac ± 10%	30W	5-12.5V	2400mA	2400mA	82% @120V 83% @240V 83% @277V	UL/cUL
LXWC-030S250PS*	120~277Vac ± 10%	30W	4-12V	2500mA	2500mA	82% @120V 83% @240V 83% @277V	UL/cUL

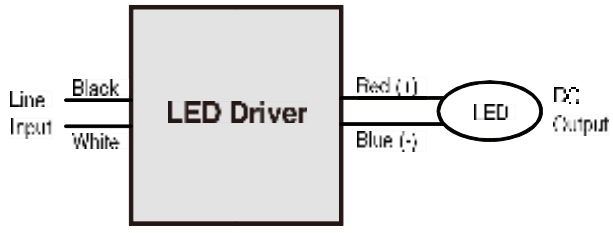
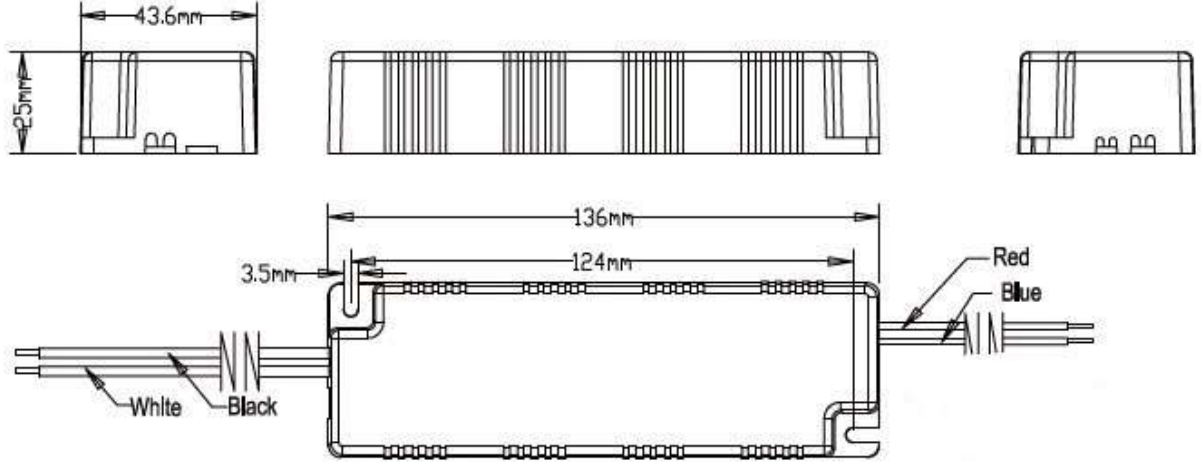
\*Class 2 output

**Technical Sales / Customer Service:** +1-818-338-7788 • Email: [sales@autec.com](mailto:sales@autec.com)

31328 Via Colinas Suite 102 • Westlake Village, CA 91362 USA • [www.autec.com](http://www.autec.com)

June 14, 2019

**■ Wiring Diagram**



Wire Specifications	
Input Wire	12" UL 1316 #18AWG (Black and White)
Output Wire	12" UL 1316 #18AWG (With Non-Class 2 Output))
Output Wire	12" UL 1316/1430 #22AWG(With Class 2 Output) (Red and Blue)

**■ Technical Data**

Input voltage range	120~277Vac ± 10%
Frequency	50/60Hz
Power factor	>0.9 @ 80~100 load, 120~277VAC for all models
Inrush current	7A @230V
Max input current	0.36A @120V, 0.19A @240V, 0.16 @277V
THD	< 20% under 120~277Vac input with 80~100% load condition
Load Regulation	± 2%
Line Regulation	± 1%
Current Tolerance	± 5% at full load condition
Turn-on Delay Time	< 0.75s at full load condition
Overshoot	< 10% at full load condition
No Load Power Consumption	< 1W
Ripple & Noise (pk-pk)	< 10%

**Technical Sales / Customer Service:** +1-818-338-7788 • Email: [sales@autec.com](mailto:sales@autec.com)  
 31328 Via Colinas Suite 102 • Westlake Village, CA 91362 USA • [www.autec.com](http://www.autec.com)

■ **Technical Data(cont.)**

Withstand voltage	Input to output, 4,000Vdc, 2mA
Leakage current	Maximum 0.5mA at 277Vac, 60Hz input
Protection	Over voltage protection: Hiccup mode. Protection will trigger when load voltage exceeds specified output voltage and will auto recover after the fault mode is removed. Over current protection: Hiccup mode. Protection will trigger when load current exceeds specified output current and will auto recover after the fault mode is removed. Short circuit protection: Hiccup mode. Protection will trigger when short circuit and will auto recover after the fault mode is removed.
Operating temperature	-40 to 60°C
Storage temperature	-40 to 85°C
Humidity	5% to 95%
MTBF	324,000 hours at 40°C ambient (~70°C Case temp)
Life rating	85,000 hours at 120Vac input, 100% load and 60°C case temperature
Maximum case Temperature	90°C
Length (L)	5.37" (136mm)
Width (W)	1.72" (44mm)
Height (H)	0.99" (25mm)
Mounting (M)	4.88" (124mm)
Packing	0.23kg / unit; 40 pcs / carton; 2400 pcs / pallet

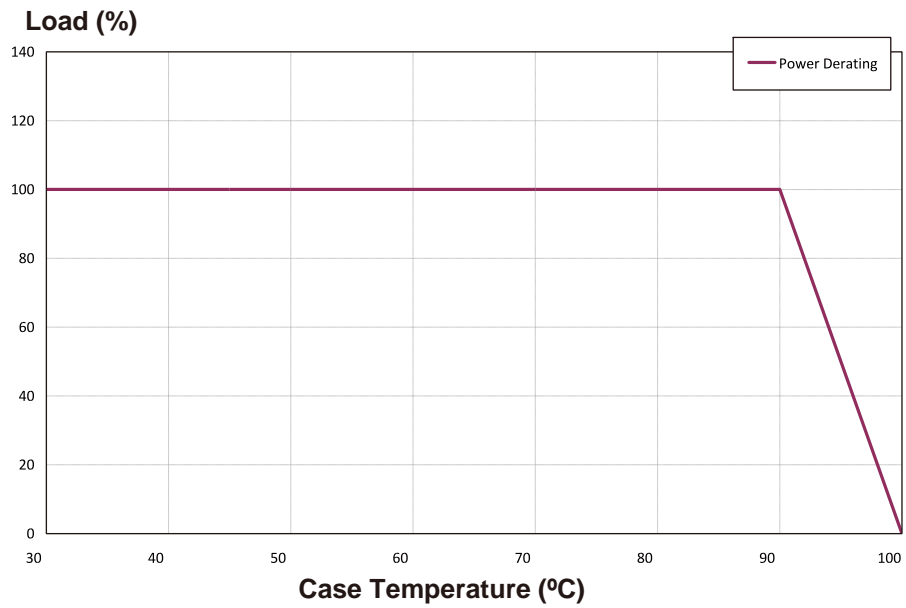
■ **Safety Compliance**

UL/cUL	UL 8750
CE	EN61347-1, EN61347-2-13
FCC, 47CFR Part 15	ANSI C63.4:2009 Class B (Consumer Limit)
EN61000-3-2	Harmonic Current Emissions Class C

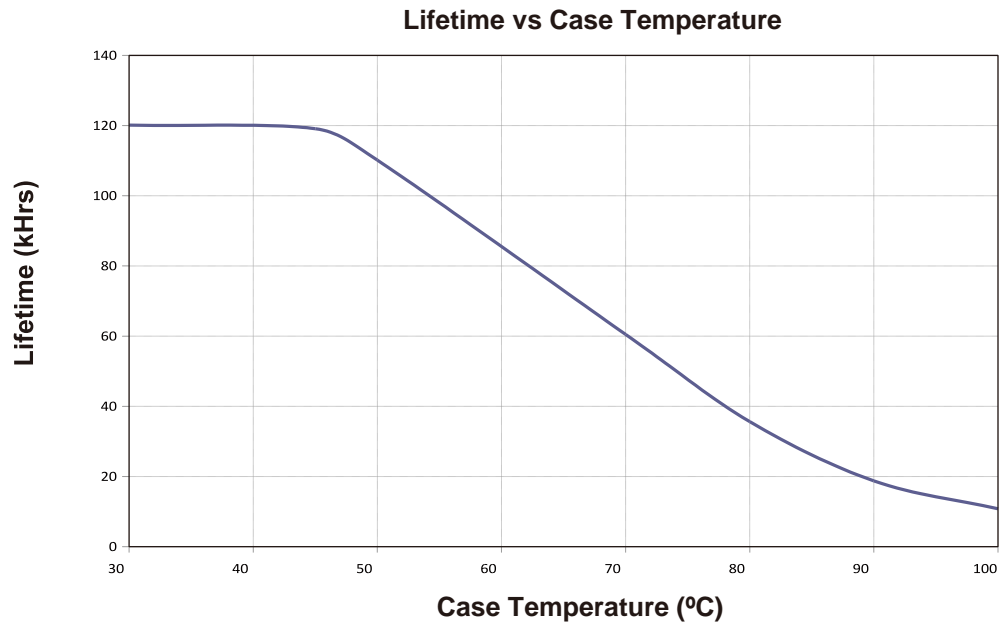
**Disclaimer:**

Autec Power Systems' (Autec) LED Drivers are Hi-Pot tested during the manufacturing process. Autec assumes no responsibility for secondary Hi-Pot testing at customer location or designated production line(s). Should customer require further Hi-Pot testing, at their own production line, following assembly of the LED Driver into the customer's assembled fixture, Autec requests advance notice. This request must be communicated to Autec in a timely manner and is recommended to be requested at time of issuing each purchase order.

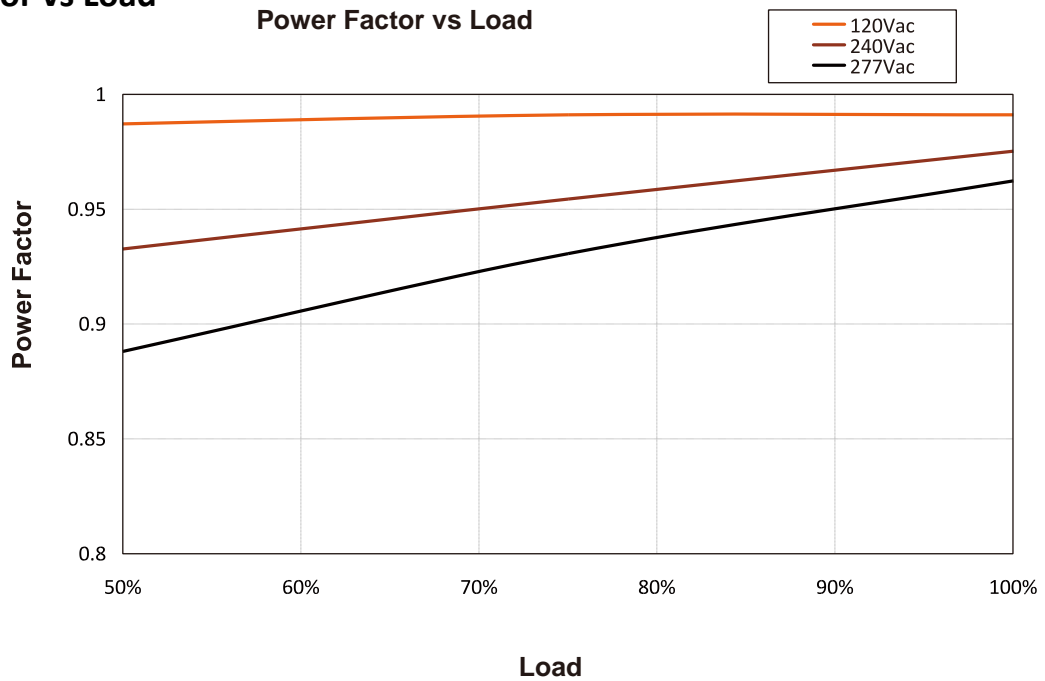
■ **Power Derating vs Case Temperature**



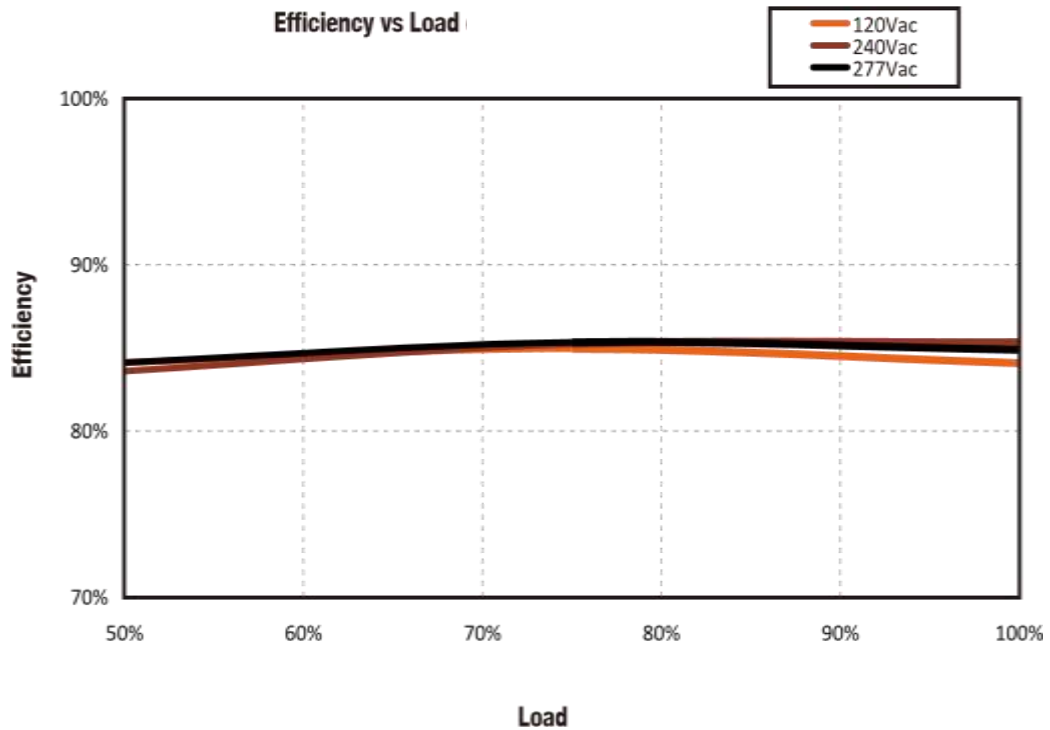
■ **Lifetime vs Case Temperature**

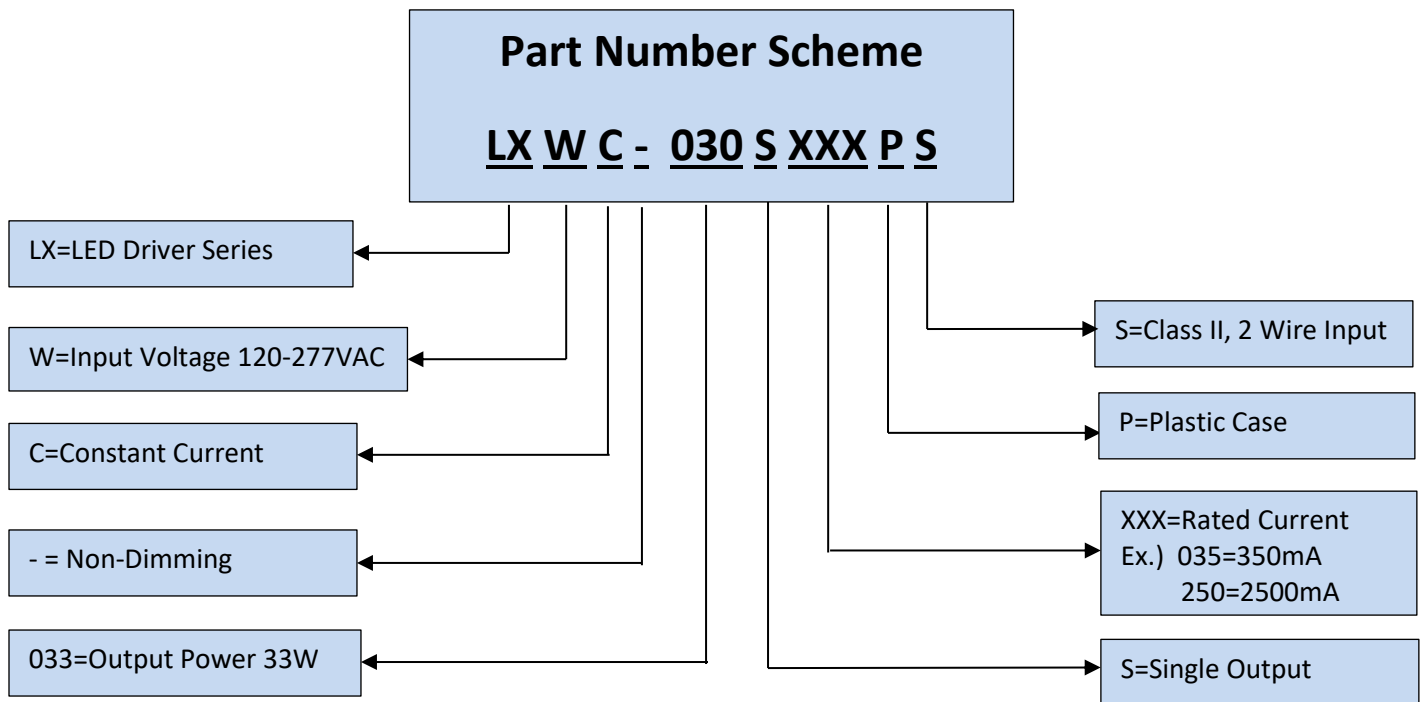


■ **Power Factor vs Load**



■ **Efficiency vs Load**





**\*Product images are for illustrative purposes only and may vary from actual design.**

**\*Specifications are subject to change without notice. Autec is not Responsible for issues arising from errors or omissions.**