

■ Features

- Single output: 155-300W(Convection cooling)
- Single output: 275-450W(Forced Air Cooling)
- Input voltage range: 90-264V
- Output current(6250mA-55000mA)
- 4"x6.5" form factor
- Efficiency to 90%
- Protections: SCP, OCP, OTP, and OVP
- Class 1 & Class 2 options
- Cover kit accessory available
- 12V fan output(optional)



*Product images are for illustrative purposes only and may vary from actual design.

■ Applications

- Network system, telecommunication system, storage system, industrial equipment, and consumer electronics

■ Model List*(See part number scheme for model number details)

Model Number	Input Voltage	Output Power	Output Voltage	Output Current Min.	Output Current Max.	Efficiency	Certificates
SPJ450-050-XY	90-264Vac	155/275W	5V	0	31A/55A*	83%	UL/cUL
SPJ450-120-XY	90-264Vac	250/450W	12V	0	20.8A/37.5A*	86%	UL/cUL
SPJ450-150-XY	90-264Vac	250/450W	15V	0	16.66A/30A*	86%	UL/cUL
SPJ450-240-XY	90-264Vac	300/450W	24V	0	12.3A/18.75A*	90%	UL/cUL
SPJ450-300-XY	90-264Vac	300/450W	30V	0	10A/15A*	90%	UL/cUL
SPJ450-480-XY	90-264Vac	300/450W	48V	0	6.25A/7.3A*	90%	UL/cUL

(*Rated current measured with forced air cooling, and has an output power of 450W)

■ Optional Variations

SPJ450-...-XY-U	U-Channel type
SPJ450-...-XY-I	I-Channel type with current sharing
SPJ450-...-XY-T	Enclosed type with top fan
SPJ450-...-XY-I-T	Enclosed type with top fan, current sharing
SPJ450-...-XY-S	Enclosed type with side fan
SPJ450-...-XY-I-S	Enclosed type with side fan, current sharing

■ Technical Data

AC Input	90-264Vac/120-390Vdc
Input Frequency	47-63Hz
Input Current	120Vac: 4.5A max 230Vac: 2.3A max
Input Protection	Dual Fusing, 8A/250V in Live & Neutral
No load Power	120Vac: 0.4 230Vac: 0.8
Inrush Current	120Vac: 40A max., 230Vac: 75A max.
Hold-up Time	120Vac: 10ms, 230Vac: 10ms
Power Factor	120Vac: 0.98, 230Vac: 0.95
Output Power	155-450W (475W for 24V, 30V & 500W for 48V model only for 5 seconds max.)
Output Voltage Adjustability	±3%
Line Regulation	±0.5%
Load Regulation	±3%
Transient Response	<10%, 50% to 100% load change, 50Hz, 50% duty cycle, 0.1 A/μs, recovery time <5 ms
Rise Time	<100 ms
Set Point Tolerance	±1%
Over Current Protection	120-150%, Hiccup Type
Over Voltage Protection	>114%, Latch type
Short Circuit Protection	Short term/Auto Recovery
Over Temperature Protection	130°C primary heat sink, auto recovery
Switching Frequency	PFC converter: Variable, 45-160kHz typical; Resonant converter: Variable, 35-250kHz: 90kHz Typical
Operating Temperature	0-+70°C, -20-0°C, startup is guaranteed
Storage Temperature	-40-+85°C
Relative Humidity	95% Rh, noncondensing
Altitude	Operating: 10,000ft.; Nonoperating: 40,000 ft.
MTBF	1.28m Hours, Telcordia-SR332-issue 3
Isolation Voltage	4242Vdc between input to output, 2121 Vdc input to Earth
Cooling	Convection: 300W; 420 LFM: 450W (24V,30V & 48V model) Convection: 250W; 420 LFM: 450W (12V, & 15V model) Convection: 155W; 420 LFM: 275W (5V model)

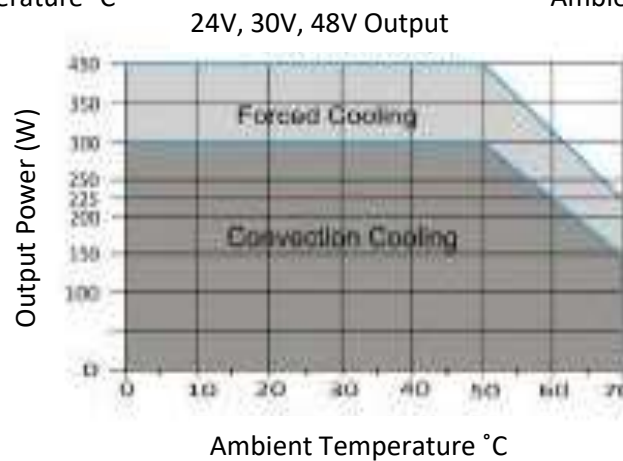
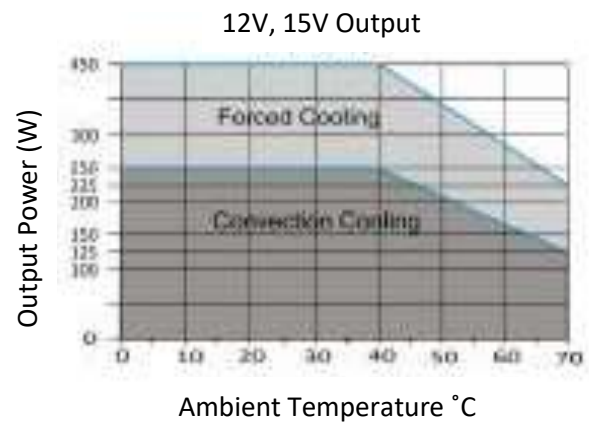
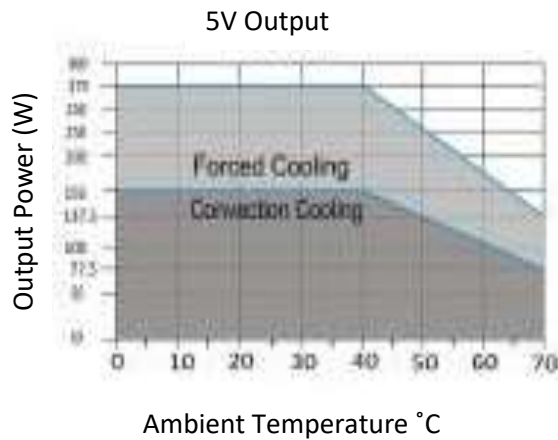
■ Remote Sense/Signal

Power Good Signal	TTL signal goes high after main output is within regulation band, delay is 0.1 to 0.3s
Remote Sense	Compensates for 200mV drop
Remote On/Off	To turn on PSU short remote pin to ground

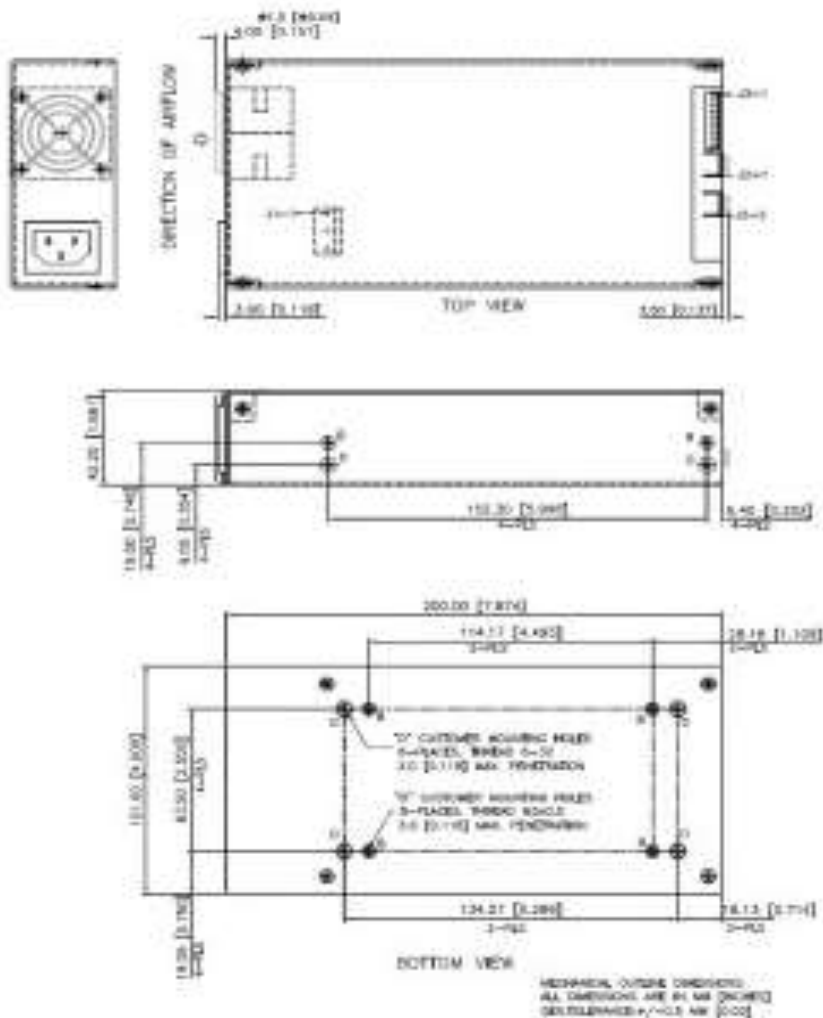
■ Safety and EMC Approval

CE Mark	Complies with LVD Directive
Conducted Emissions	EN55022-B, CISPR22-B, FCC Par15 Class B
Static Discharge	EN61000-4-2, Level-3
RF Field Susceptibility	EN61000-4-3, Level-3
Fast Transients/Bursts	EN61000-4-4, Level-3
Radiated Emissions	EN55022-B, CISPR22-B, FCC Part15-B to be controlled in end system
Surge Susceptibility	EN61000-4-5, Level-3
Harmonic Current	EN6100-3-2, Class D
Safety Standards	EN60950-1, IEC60950-1 (2 nd edition), UL60950(2 nd edition), CSA C22.2 No.60950-1 (2 nd edition), Class 1 SELV
Approval Agency	Nemko, UL, cUL

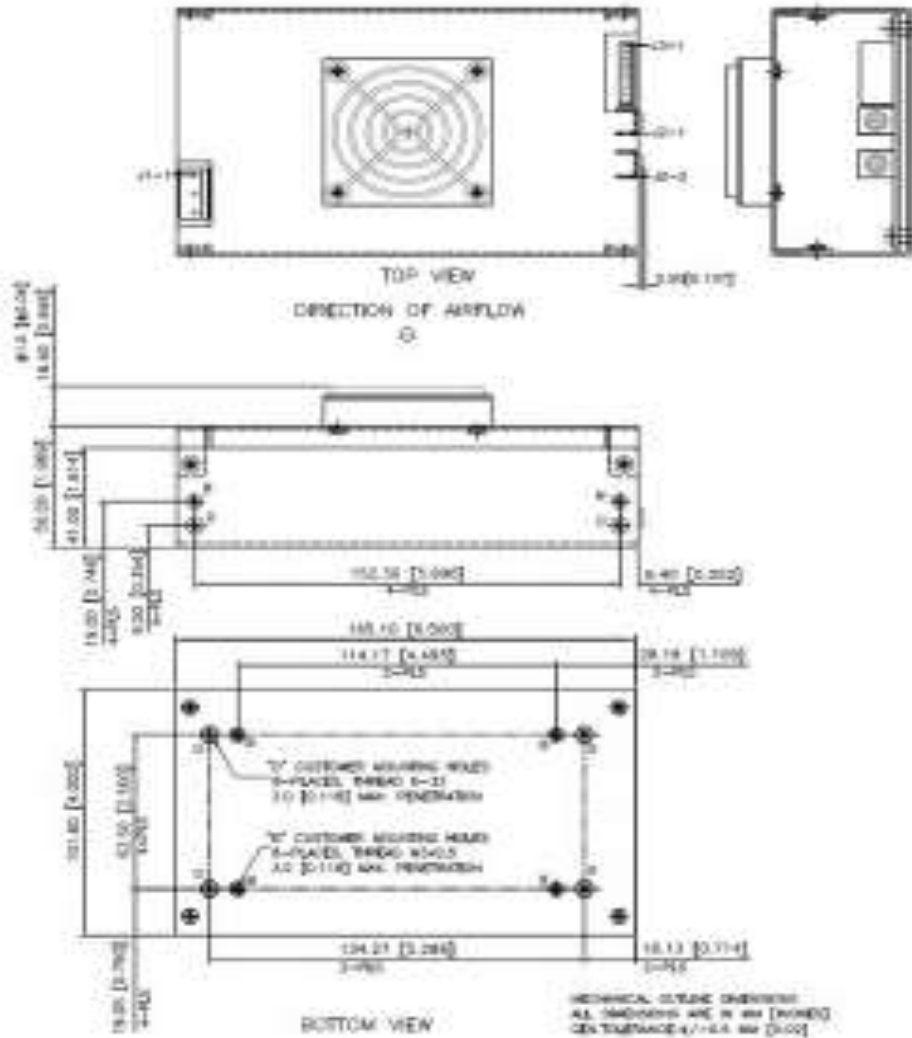
■ Derating Curve



Option 2: Side Fan Mounting



Option 3: Top Fan Mounting



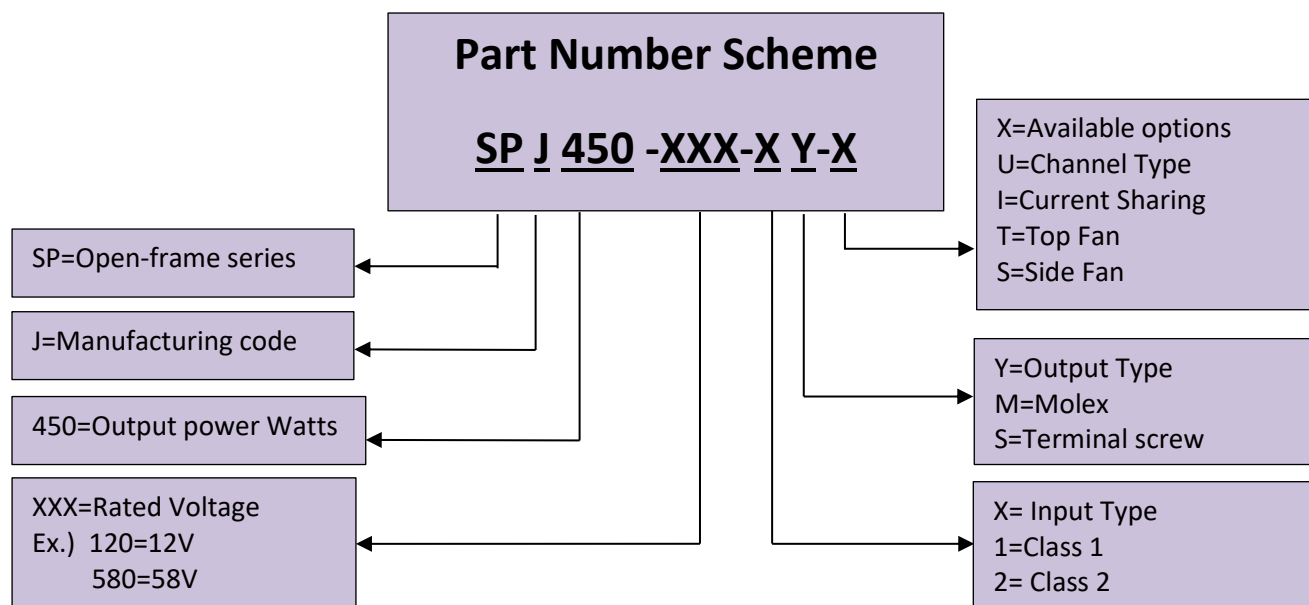
Technical Sales / Customer Service: +1-818-338-7788 • Email: sales@autec.com

31328 Via Colinas Suite 102 • Westlake Village, CA 91362 USA • www.autec.com

March 18, 2019

Connectors		
J1	Pin 1	AC Line
	Pin 2	AC Neutral
	Pin 5	Earth
Spade Connector (J5)		
J2	Pin 1	V1
	Pin 2	RTN
J3	Pin 1	NC
	Pin 2	PF OK
	Pin 3	Power good
	Pin 4	DC return
	Pin 5	+5 VSTBY
	Pin 6	+VE Remote sense
	Pin 7	-VE Remote sense
	Pin 8	CS
	Pin 9	DC Return
	Pin 10	Remote on/off
J4(Fan output)	Pin 1	+VE
	Pin 2	-VE

Mechanical Specifications	
AC Input Connector (J1)	Tyco: 1-1123724-3 Mating: 1-1123722-5
Earth (J5)	Molex: 19705-4301 Mating: 19003-0001
DC Output Connector (J2)	6-32 inches Screw Pan HD Mating: Designed to accept Ring Tongue Terminal AMP: 8-31886-1 wherein one 16AWG(max) wire can be crimped Note: One Ring Tongue Terminal with 16AWG is recommended for current up to 11A only. Use Multiple tongue terminals with wire for more current.
Signal Connector(J3)	Molex: 22-3-2101 Mating: 22-01-2107; Pins 08-50-0113
Dimensions	4x6.5x1.61 in. (101.6x165.01x41mm)
Weight	900g



*Product images are for illustrative purposes only and may vary from actual design.

*Specifications are subject to change without notice. Autec is not responsible for issues arising from errors or omissions.