

■ Features

- Single output to 480W
- Input voltage range: 90-264V
- Output current(11000mA-34000mA)
- Built-in Active PFC function, PF>0.96
- Efficiency to 90%
- Protections: OLP, OTP, OVP and SCP
- ZVS technology to reduce power dissipation
- 3-year Warranty
- Withstand 300Vac surge input for 5 secs.
- Built-in cooling fan speed control
- Built-in Remote sense function
- Built-in DC OK signal



*Product images are for illustrative purposes only and may vary from actual design.

■ Applications

- Suitable for critical applications

■ Model List*(See part number scheme for model number details)

Model Number	Input Voltage	Output Power	Output Voltage	Output Current Min.	Output Current Max.(NOTE 1)	Efficiency	Certifications
SPL-480-1121	90–264Vac	480W	12V	0	34A	88%	UL/cUL
SPL-480-1241	90–264Vac	480W	24V	0	22A	89%	UL/cUL
SPL-480-1271	90–264Vac	480W	27V	0	18A	89%	UL/cUL
SPL-480-1361	90–264Vac	480W	36V	0	14A	90%	UL/cUL
SPL-480-1481	90–264Vac	480W	48V	0	11A	90%	UL/cUL

■ Technical Data

Ripple and Noise 0-70°C	120mV(12V), 150mV(24V-36V), 200mV(48V) (NOTE 2)
Ripple and Noise -30°C	180mV(12V), 150mV(24V-36V), 200mV(48V)(NOTE 2)
Voltage adjustment range	-5%~+10% of rated output voltage
Voltage Accuracy	±2%
Line Regulation	±0.5%(12V-36V), ±0.2%(48V)
Load Regulation	±1%
Set-up Time	<3S @115Vac, <1.5S @230Vac
Hold up Time	>16mS (230Vac input, Full load)
Temperature Coefficient	±0.05%°C
Overshoot and Undershoot	<5%
Voltage Range	90Vac~264Vac
Frequency Range	47Hz~63Hz
Power factor (typical)	PF>0.98@115Vac, PF>0.96@230Vac
AC Current (max.)	<9A
Inrush Current (Typical)	<20A@230Vac Cold start
Leakage Current	Input—output: ≤0.25mA Input—PG: ≤3.5mA

Technical Sales / Customer Service: +1-818-338-7788 • Email: sales@autec.com

31328 Via Colinas Suite 102 • Westlake Village, CA 91362 USA • www.autec.com

January 3, 2019

■ Technical Data(cont.)

Over Load	110%~135% of rated output current, hiccup mode, auto recovery
Over Temperature	105°C+5°C; shut down, auto recovery after the temperature goes down to 75°C
Short Circuit	Long-term mode, auto recovery
Over Voltage	110%~150% of rated voltage; constant voltage
Operating amb. Temp. & Hum.	-30°C~70°C; 20%~90%RH No condensing (refer to the derating curve)
Storage Temp. & Hum.	-40°C~85°C; 10%~95%RH No condensing
MTBF (MIL-HDBK-217F)	More than 200,000Hrs (25°C, Full load)
Dimension (L*W*H)	218×116.5×41mm (*SPL-480-1121 dimension is 226×116.5×41mm)
Packing	6PCS/CTN, 8.7KGS, 0.04CBM
Cooling method	Cooling by forced air (built-in DC fan)

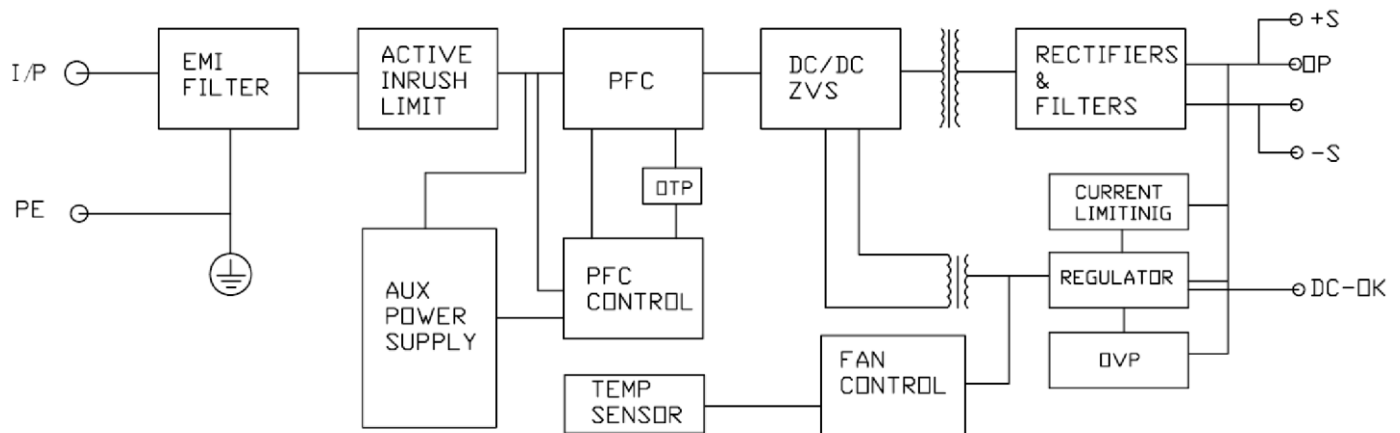
■ Safety and EMC Approval(NOTE 3)

Safety Standards	UL60950-1 2nd Ed; IEC 60950-1:2005(2nd Ed) ;EN60950-1:2006
Withstand Voltage	Primary-Secondary:3.0KVac; ≤10mA .Primary-PG:1.5KVac; ≤10mA. Secondary-PG:0.5KVac;≤10mA.
Isolation Resistance	≥100M ohms
EMI Conduction & Radiation	Compliance to EN55022, CLASS B
Harmonic Current	Compliance to EN61000-3-2, class D
EMS Immunity	Compliance to EN61000-4-2,3,4,5,6,8,11; heavy industry level

Notes:

1. All parameters not specifically mentioned are measured at rated input, rated load and 25°C of ambient temperature
2. Measured at 20MHz of bandwidth
3. The power supply is considered a component which will be installed into the final equipment. The unit must be re-confirmed that it still meets EMC directives.

■ Block Diagram

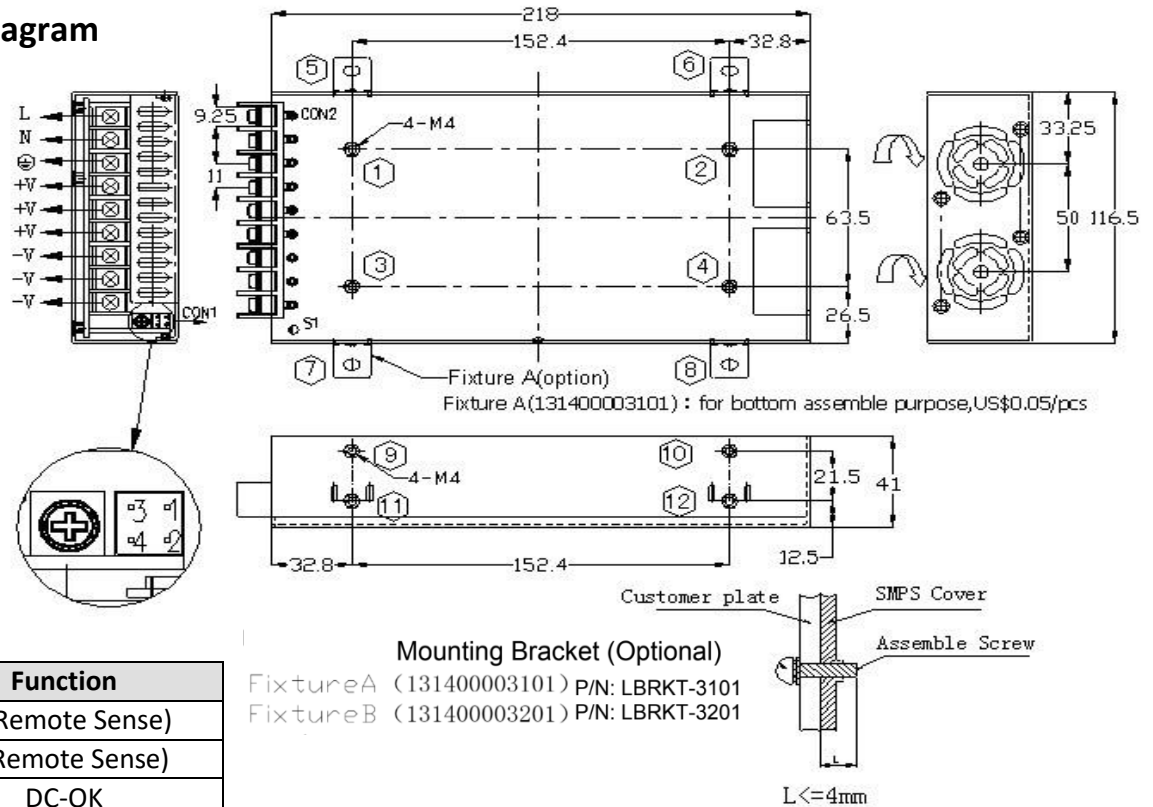


Technical Sales / Customer Service: +1-818-338-7788 • Email: sales@autec.com

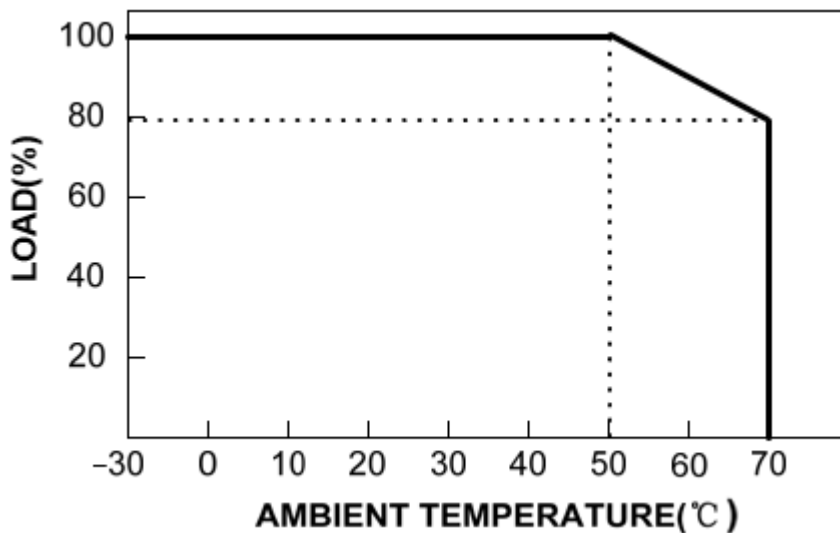
31328 Via Colinas Suite 102 • Westlake Village, CA 91362 USA • www.autec.com

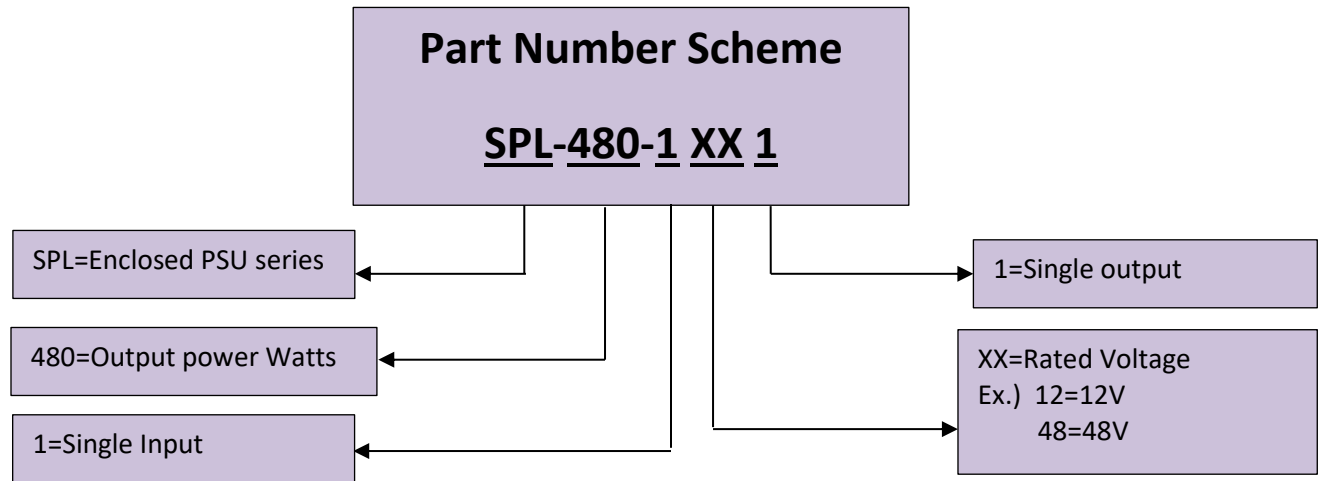
January 3, 2019

■ **Mechanical Diagram**



■ **Derating Curve**





***Product images are for illustrative purposes only and may vary from actual design.**

***Specifications are subject to change without notice. Autec is not responsible for issues arising from errors or omissions.**