

ATHENA™ BATTEN OPERATING INSTRUCTION MANUAL

WARNING

This product is being installed into mains electricity which is inherently dangerous. Failure to follow the instructions in this manual or negligence will void the product warranty and can cause injury or even death.

Before using this product, you must:

- Read and understand all instructions for use.
- Use a qualified electrical contractor if legally required and if you do not fully understand how to safely install this product.
- Become acquainted with its capabilities and limitations.
- Understand and accept the risks involved.

Introduction

Thank you for choosing Visionary International as your lighting provider. This operating manual provides information on how the product functions and how to safely operate and install the product.

Installing the product (Existing installation)

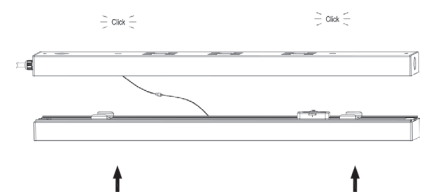
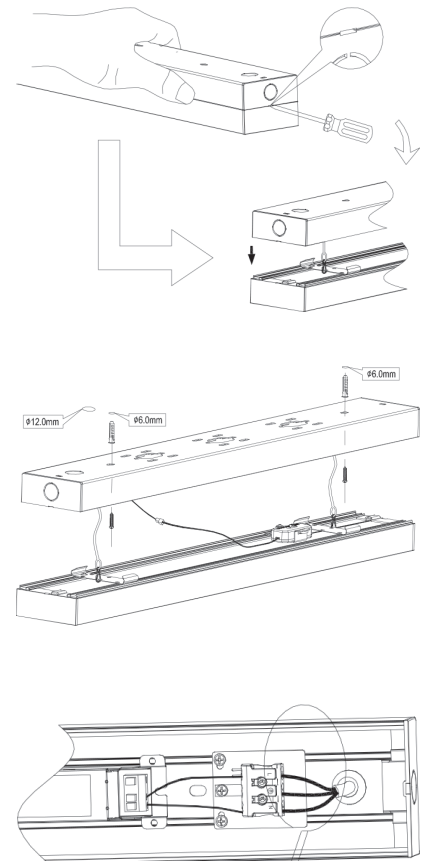
Any electrical work must conform with the Electricity Act 1992 including section 79, NZECP 50: 2004, Electricity Act 1992 Section 80 and NZECP 51: 2004.

- 1) Disable power to the circuit that you are working on. We highly recommend switching electricity off at the main switchboard of the premises for added safety.
- 2) Remove the previous fitting from the ceiling cavity being careful not to damage the ceiling material. Ensure that there is no remaining driver/transformer connected to the specific lighting mains cable.
- 3) Gain access to the batten power supply and terminals by using a medium sized flat-head screwdriver and inserting it into the marked divot at one end of the batten between the upper and lower batten segments. (Illustration on right)
- 4) Feed the TPS cable through the center of the fitting.
- 5) Use the supplied screws to fasten the batten to the ceiling until sturdily in place.
- 4) Fully unscrew the three input terminals until the screws are flush with the plastic holder above to prepare cable insertion.
- 5) Install the three cable colours into the appropriate slot in the terminal block. Screw down each terminal screw firmly.
Live (Driver input) = Brown or red sheath colour (cable side)
Ground (Driver input) = Yellow sheath colour (cable side)
Neutral (Driver input) = Blue or black sheath colour (cable side)

NOTE: Some previous installations have had the ground cable cut off so the cable is not exposed. The NZECP requires you ensure proper grounding as this is a Class 1 light fitting.

- 6) Once all cables are installed, tighten the terminal screws until the cables are fully fastened in the terminal block. Check all cable cores are locked in place applying a light force on the TPS cable. Please check to ensure there is no exposed or unsheathed cable to ensure there is no undue electrical risk.

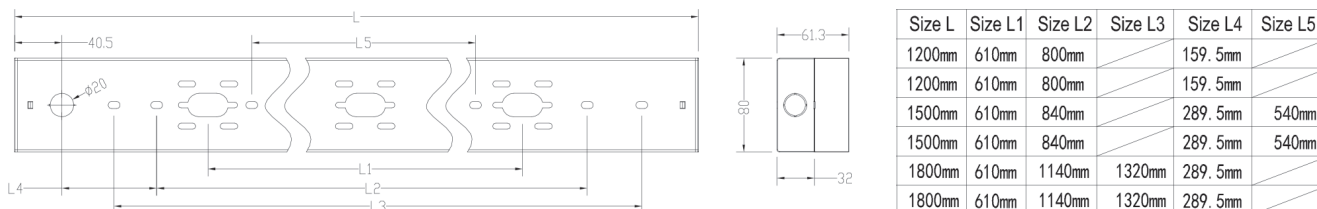
- 7) Connect the upper side of the batten fixture by pressing it into the lower part of the fixture that is already in place. You should hear a click as it locks into place. Check around the entire fitting to ensure all sides are fully fixed and the upper and lower segments of the batten are flush.



Box Contents

1x Athena Batten
1x IP68 Rated gasket
2x Square Head screws for surface mount installation
2x GIB insertion nodules.

Dimensions



Usage areas

This product is designed and suitable for indoor use only in residential or commercial applications. The product is suitable for use in general lighting areas such as home living spaces and indoor commercial spaces where the product is not exposed to impacts, excessive dust or any water ingress. This product is not suitable for use in a parallel connection with unsuppressed inductive loads or where there are known power quality issues. Doing so will void the product warranty.

New Installations (requiring new wiring and/or new ceiling cutout)

The product must be installed by a fully licensed electrical contractor. Under New Zealand law, a home owner or business that is not qualified to install electrical products cannot install Visionary products that require new wiring. Visionary Technologies can assist you in finding a suitable electrical contractor who is properly trained and experienced in installing Visionary products. Contact us for more information.

DISCLAIMER

VISIONARY TECHNOLOGIES RESERVES THE RIGHT TO CHANGE PRODUCTS, INFORMATION AND SPECIFICATIONS WITHOUT NOTICE. Products and specifications discussed herein are for reference purposes only. All information discussed herein may change without notice and is provided on an "AS IS" basis, without warranties of any kind. This document and all information discussed herein remain the sole and exclusive property of Visionary Technologies. No license of any patent, copyright, mask work, trademark or any other intellectual property right is granted by one party to the other party under this document, by implication, estoppels or otherwise. Visionary products are not intended for use in life support, critical care, medical, safety equipment, or similar applications where product failure could result in loss of life or personal or physical harm, or any military or defense application, or any governmental procurement to which special terms or provisions may apply. For updates or additional information about Visionary products, contact your nearest Visionary office.

General Specifications

Wattage	4ft 1200mm - 32W 5ft 1500mm - 50W
Output	4ft 1200mm - 4000lm 5ft 1500mm - 6500lm
Efficacy Lamp + Driver	Up to 125lm/W Delivered Lumens @ 50W,4000K,80CRI
Optic Options	120°
IP Rating	IP40
IK Rating	NA
Warranty	5 - Years
Parts & Labour	Yes - 3-Years
CCT Options	3CCT 3000, 4000K, 5000K
Mount Options	Surface Mount (Incl) Suspension Kit
Lighting Engine	>50,000hr L70 TM-21
Driver	Class I
Connections	Centre Cable Mount Side Cable Mount Option
Accessories	NA
Colour/s	White
SDCM	3-Step <3-SDCM
Input Connection	6mm Terminal Block Pre-wired LED Driver