

Nordic WAY 2

A stylized symbol representing the Nordic cross, composed of three overlapping crosses in red, blue, and yellow.

Co-financed by the European Union
Connecting Europe Facility

Background: The Nordic conditions



Co-financed by the European Union
Connecting Europe Facility

NordicWay 2 – objectives

Pilot deployment of interoperable Day 1/1.5 C-ITS and support infrastructure readiness for Connected and Automated Driving

Contribute to harmonisation and interoperability of C-ITS in Europe

Support deployment of Day 1 and 1.5 C-ITS services on corridor and rural roads

Support infrastructure readiness for connected and automated driving

Assess impacts of Day 1/1.5 C-ITS services including mobility, behaviour, acceptance



- **Enhanced traffic safety** and fluency as well as reduction of CO₂
- **Interoperable solutions and services suitable for Nordic conditions** (road conditions, cellular coverage, traffic problems/needs etc.)
- Services with potential to cover entire Nordic network and reach high penetration **without large infrastructure investments** (i.e. cellular communication)
- **Scale up C-ITS services** - by supporting cloud to cloud hybrid communication



NordicWay 2 will:

- **test the interoperability** of several C-ITS services on the NordicWay 2 network
- **test the infrastructure readiness** for connected and automated driving
- **explore** requirements for **automated driving** in snowy and icy conditions
- **demonstrate and highlight future services** and challenges connected to vehicles with higher SAE levels



Scalable throughout Europe and beyond



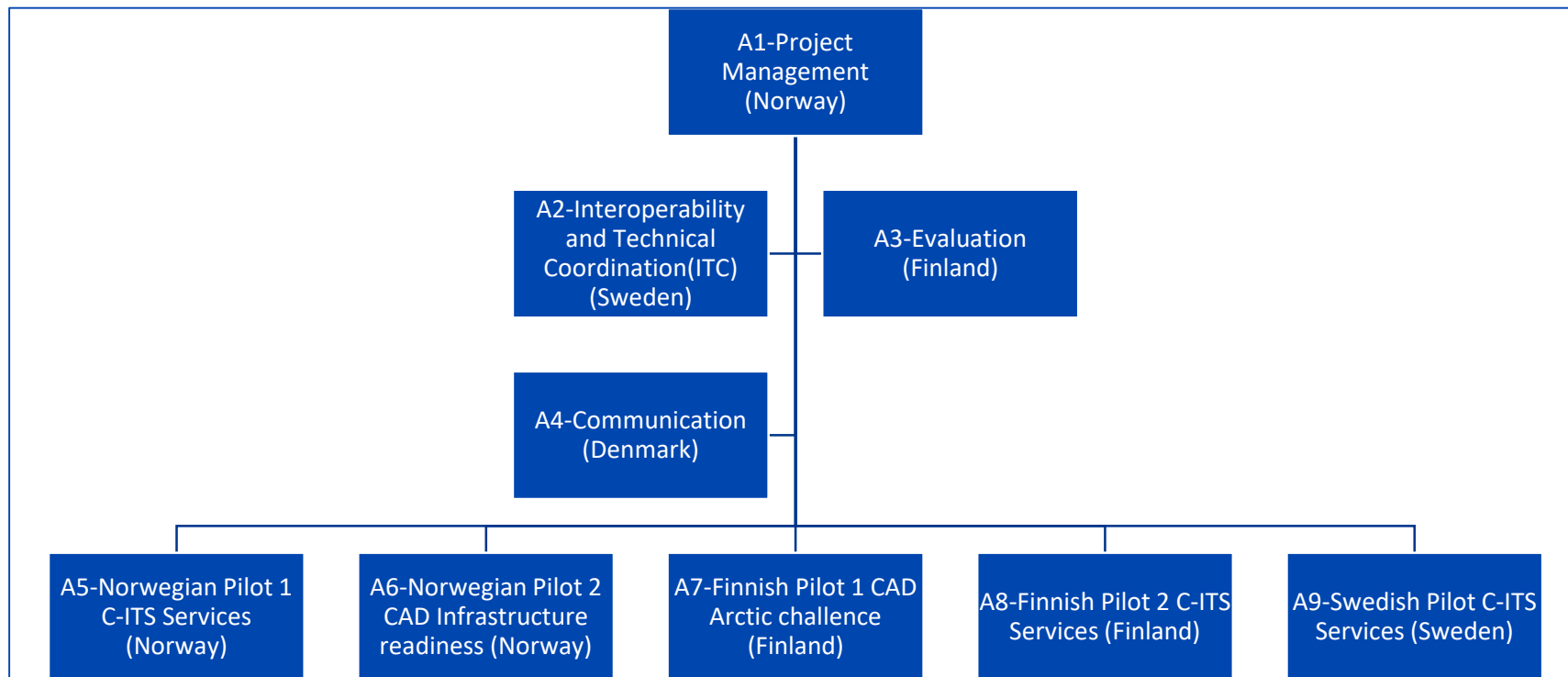
Public-Private collaboration

NordicWay 2 is a collaboration between public and private partners in Finland, Norway, Sweden and Denmark

Co-financed by the European Union within the Connecting Europe Facility programme 2017-2020



NordicWay 2 Organisation



Services – preliminary (tendering pt.)

	NORWAY	FINLAND	SWEDEN
Day 1 C-ITS services list			
Hazardous location notifications:			
Slow or stationary vehicle(s) & traffic ahead warning;	✓	✓	
Road works warning	✓	✓	✓
Weather conditions	✓	✓	
Emergency brake light	✓		✓
Emergency vehicle approaching		✓	✓
Other hazards		✓	✓
Signage applications:			
In-vehicle signage	✓	✓	✓
In-vehicle speed limits	✓	✓	
Signal violation / intersection safety	✓	✓	
Traffic signal priority request by designated vehicles		✓	✓
Green light optimal speed advisory	✓	✓	✓
Probe vehicle data	✓	✓	
Shockwave damping (falls under European Telecommunication Standards Institute (ETSI) category 'local hazard warning')			



Services – preliminary (tendering pt.)

	NO	FI	SE
C-ITS services			
Day 1.5 services			
Information on fuelling & charging stations for alternative fuel vehicles	✓		
On street parking information and management	✓		
Traffic information & Smart routing	✓	✓	✓
Cooperative collision risk warning	✓		
Connected & Cooperative navigation into and out of city			✓
Connected and Automated Driving pilots			
Collection of data for mapping of infrastructure readiness	✓		
Running of automated driving pilots		✓	



Focus: Services for Nordic conditions



Some Nordic challenges



Norway:
15000 HGV incidents per year



Co-financed by the European Union
Connecting Europe Facility

Contact

NordicWay Coordinator

Erik Olsen, NPRA

erik_olsen@vegvesen.no

www.nordicway.net



Denmark

ANDERS BAK SØRENSEN

ABAS@vd.dk



Finland

ILKKA KOTILAINEN

ilkka.kotilainen@fta.fi



Norway

TORGEIR VAA

torgeir.vaa@vegvesen.no



Sweden

ARNE LINDEBERG

arne.lindeberg@trafikverket.se





Statens vegvesen
Norwegian Public Roads
Administration



TRAFIKVERKET
SWEDISH TRANSPORT ADMINISTRATION



Trafi
Finnish Transport Safety Agency

Liikennevirasto

Finnish Transport Agency

Genua Consult



Co-financed by the European Union
Connecting Europe Facility



Z E N U I T Y



ERICSSON



SCANIA

Technolution

CLOSER



City of
Gothenburg



Co-financed by the European Union
Connecting Europe Facility



Co-financed by the European Union
Connecting Europe Facility

