

NEP EUROPE: FACTSHEET

NEP Belgium Studio 2

NEP Studios

Nijverheidstraat 17

B-1840 Londerzeel

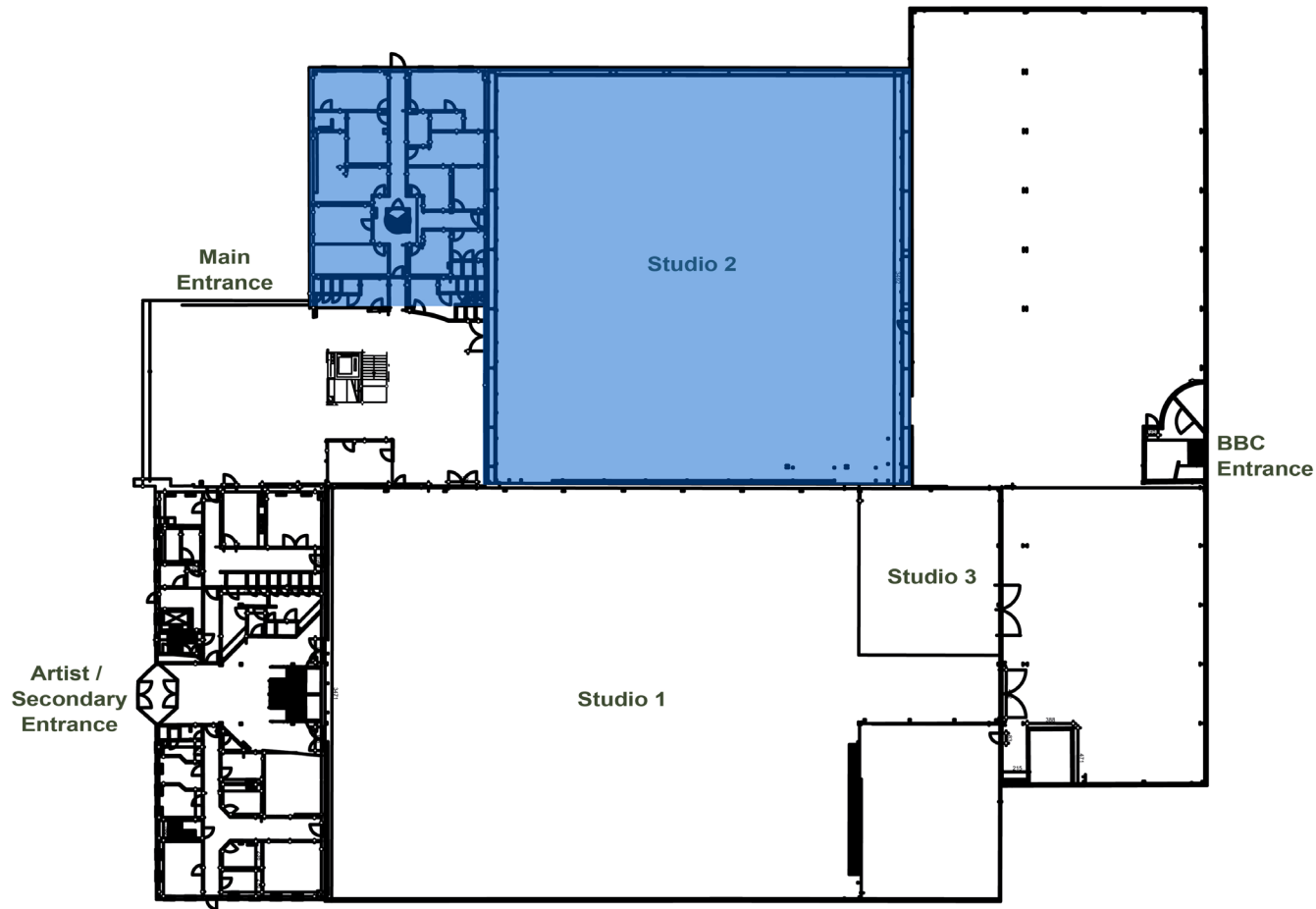
be.sales@nepgroup.com

+32 (0) 16 23 27 52



WWW.NEPGROUP.COM

FLOORPLAN STUDIO 2 LONDERZEEL



- 992 m²
- Perfect location for TV, film, commercial use and events
- Near the A12 highway from Brussels to Antwerp - we are very accessible and easy to access
- Equipped with 99 lighting booms; every boom can lift 125kg and can be adjusted to the desired height
- Power supply of 1000kVA
- Black curtains that cover the entire studio and a 60m seamless white cyclorama
- Includes its own technical room where clients can put dimmer racks and connect to several supply lines that go to the grids and lighting booms in the studio
- Connected to our warehouse, so sets and equipment can be loaded and unloaded inside the building, with direct access to the studio
- All accesses to the studios are at level 0
- Parking space for 2 OB trucks in warehouse, if needed
- 7 dressing rooms, plus a makeup and wardrobe room
- An office
- Reception on first floor to collect an audience

SPECIFICATIONS STUDIO 2 LONDERZEEL

Large equipped studio: ideal for TV productions, Film & Corporate Events

STUDIO FLOOR	
Total Floor Area	35m (L) x 35m (W) = 1225m ²
Free Floor Area	31,50m (L) x 31,50m (W) = 992m ² (inside cyclo)
Height Under Catwalks	9,75m
Rigging Beams	12m
Ceiling	14,65m
Floor type	Polybeton (Epoxy)

GRID	
	87 lighting booms of 3m with 3 circuits (load-bearing capacity: 125kg)
	12 lighting booms of 9m with 3 circuits
	All circuits in the studio are connected with Harting 16 connectors in the dimmer room

POWER SUPPLY	
	Total of 1000 kVA/ 3 x 380 + N, subdivided into: Number – Amperes/phase – Connector – Location
	1 x 250 A Powerlock Studio
	1 x 125 A CEE Studio
	2 x 63 A CEE Studio
	8 x 32 A CEE Studio
	3 x 250 A Powerlock Dimmer Room

ACCESS	
Emergency Doors	2 x 2,34m (W) Double emergency doors 2 x 0,93m (W) Single emergency doors
Studio Access	From storage to studio: 4 m (H) x 6,25 m (H) From street to studio: 4 m (W) x 3,98 m (H) From Studio to dressing rooms: 1 m (W) x 2 m (H) Loading platform height relative to ground: 0 m

CURTAINS	
Black	Covers the entire studio
Neutral Light Grey Cyclorama	60m
	The cyclorama system has 1 circuit
	All curtains are fireproof

BUILDING FACILITIES	
Dressing Rooms	6 units (Average area 13 m ²) Mirror, Dresser, Chair
Luxury Dressing Rooms	1 units (25 m ²) Mirror, Dresser, Chair, Shower + washbasin
Makeup Room	17 m ² Mirrors with lighting, Work surface, Washbasin with hot and cold water
Production Room	42m ² Additional rooms on request
Wardrobe Room	20m ² Washing machine + Dryer