



Direct Vent  
Gas Fireplaces



Add a touch of style  
and warmth to any room.

# ELOQUENCE

24 DVRS25N



Fireplace: 24 DVRS25N  
Black Surround with Black Door

## Input rating

### Valve Type

Natural Gas: 14,000 - 25,000 BTU/hr / 4.10 - 7.33 Kw/hr  
Propane: 14,000 - 25,000 BTU/hr / 4.10 - 7.33 Kw/hr

### Efficiencies

Maximum Efficiency: 82%  
P4 Fireplace Efficiency: 71%

## Surrounds and Doors



Black Door with  
Black Surround



Black Door with  
Nickel Surround



Nickel Door with  
Nickel Surround

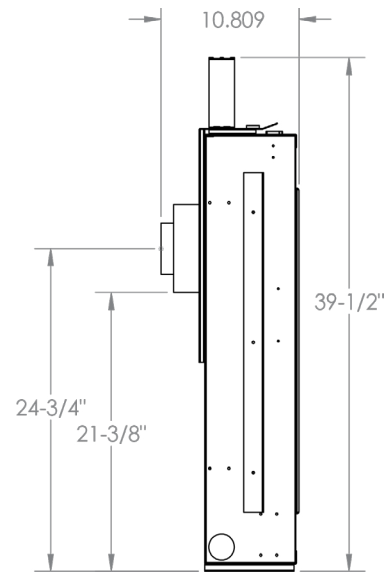
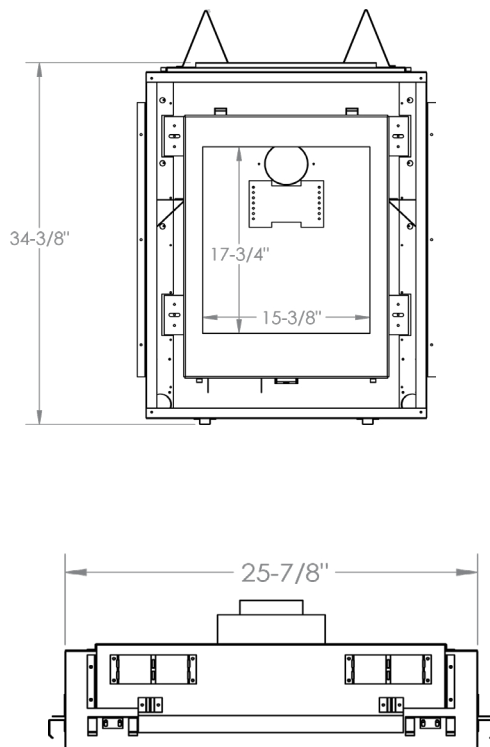


Nickel Door with  
Black Surround

**Eloquence:** Clearly demonstrating, expressing, or indicating something

The 24-DVRS25N demonstrates beautiful styling in your modern home without sacrificing efficiency. With its unique slim, portrait style and variable door and surround options, the 24-DVRS25N adds life to any space regardless of the shape or size of the room.

# TECHNICAL SPECIFICATIONS



## Standard Features

- Remote Control:** Multi Function remote control system c/w smart thermostat
- Interior Lining:** Black fiber
- Ceramic Glass Door:** Included
- Barrier Screen:** Included
- Viewing Area:** 15-1/2" W x 18-3/4" H
- Vent Size:** 4 x 6-5/8" rigid, rear, 4" 7" flex
- Buner Type:** Wall To wall Steel Pan
- Firebox and Host Shell Construction** Welded/rivet and gasket, silicone free. Host shell has removable firebox which allows the shell to be installed without the firebox.
- Warranty:** Limited lifetime

## Clearance to Combustion

- Framing Demensions:** 26-1/2" W x 39-1/2"H x 5-1/2" D
- Room Clearance Measured outer shell**
- Sidewall:** 4"
- Floor:** 4"
- Ceiling:** 12"
- Mantel:** 9" (Based on 8" deep matel)

## Options

- Interior Lining:** Reflective Glass Panel
- Propane:** Optional
- Door:** Black and Nickel
- Surround:** Black and Nickel

See owner's manual for framing instructions and clearence to combustibile guides. For more information and pictures visit [brigantiafireplaces.com](http://brigantiafireplaces.com)

**All fireplaces come standard with barrier screens which attach to the door with very little effort.**

# PERFECTION

35 DVRS31N



Fireplace: 35 DVRS31N  
Black Surround with Black Door

## Input rating

### Valve Type

Natural Gas: 16,000 - 31,000 BTU/hr / 4.69 - 9.1 Kw/hr  
Propane: 16,000 - 31,000 BTU/hr / 4.69 - 9.1 Kw/hr

### Efficiencies

Maximum Efficiency: 84%  
P4 Fireplace Efficiency: 72%

## Surrounds and Doors



Black Door with  
Black Surround



Black Door with  
Nickel Surround



Nickel Door with  
Nickel Surround

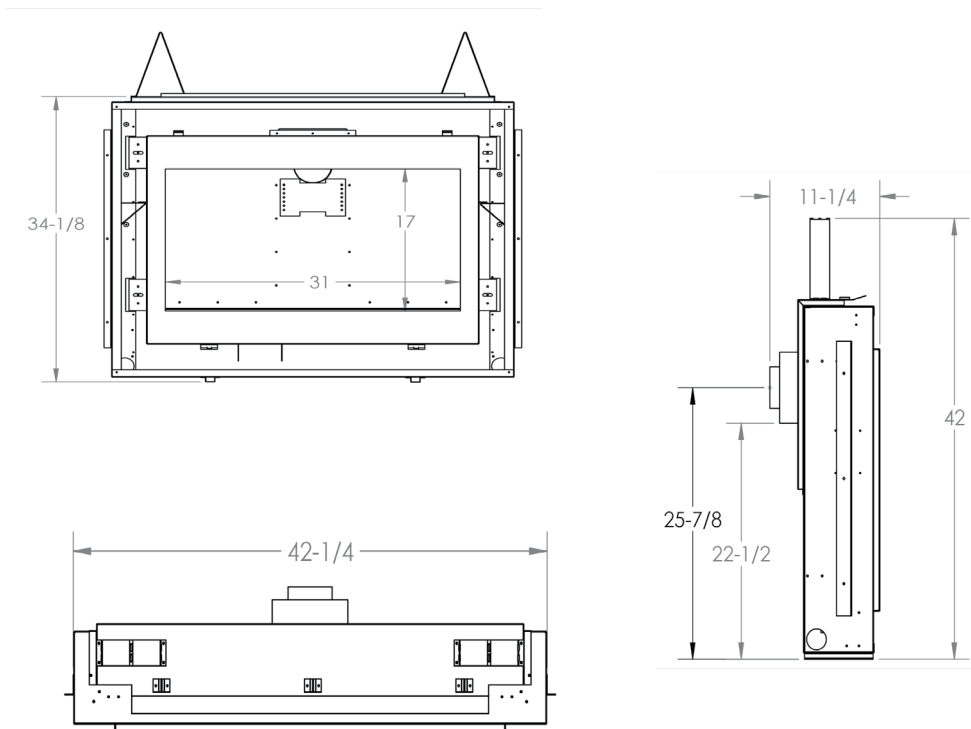


Nickel Door with  
Black Surround

**Perfection:** The condition of being free or as free as possible from all flaws or defects.

The 35-DVRS31N's slim fit design offers installation convenience and completes your flawless modern home with a breathtaking smooth and elegant view of the fire. Watch as the 35-DVRS31N becomes the centerpiece of your home; gathering family and guests around its stylish flame.

# TECHNICAL SPECIFICATIONS



## Standard Features

- Remote Control:** Multi Function remote control system c/w smart thermostat
- Interior Lining:** Black fiber
- Ceramic Glass Door:** Included
- Barrier Screen:** Included
- Viewing Area:** 31" W x 17" H
- Vent Size:** 4 x 6-5/8" rigid, 4 x 7" flex, terminates vertical or horizontal
- Buner Type:** Wall To wall Steel Pan
- Firebox and Host Shell Construction:** Welded/rivet and gasket, silicone free. Host shell has removable firebox which allows the shell to be installed without the firebox.
- Warranty:** Limited lifetime

## Clearance to Combustion

- Framing Dimensions:** 42-1/2" W x 42"H x 5-1/2" D
- Room Clearance Measured outer shell**
- Sidewall:** 4"
- Floor:** 4"
- Ceiling:** 14"
- Mantel:** 9" (Based on 8" deep matel)

## Options

- Interior Lining:** Reflective Glass Panel
- Propane:** Optional
- Door:** Black and Nickel
- Surround:** Black and Nickel

See owner's manual for framing instructions and clearence to combustibile guides. For more information and pictures visit [brigantiafireplaces.com](http://brigantiafireplaces.com)

All fireplaces come standard with barrier screens which attach to the door with very little effort.



# EXCELLENCE

57 DVRS50N



Fireplace: 57 DVRS50N  
Nickel Surround with Nickel Door

## Input rating

### Valve Type

Natural Gas: 16,000 - 31,000 BTU/hr / 4.69 - 9.1 Kw/hr  
Propane: 16,000 - 31,000 BTU/hr / 4.69 - 9.1 Kw/hr

### Efficiencies

Maximum Efficiency: 84%  
P4 Fireplace Efficiency: 72%

## Surrounds and Doors



Black Door with  
Black Surround



Black Door with  
Nickel Surround



Nickel Door with  
Nickel Surround

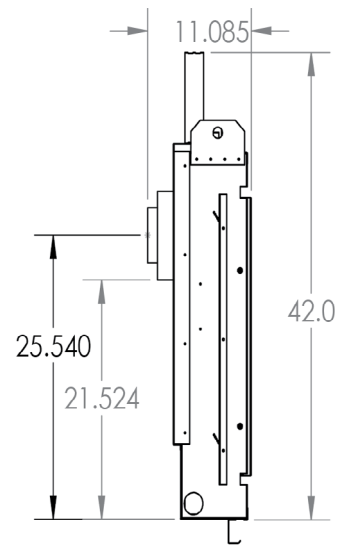
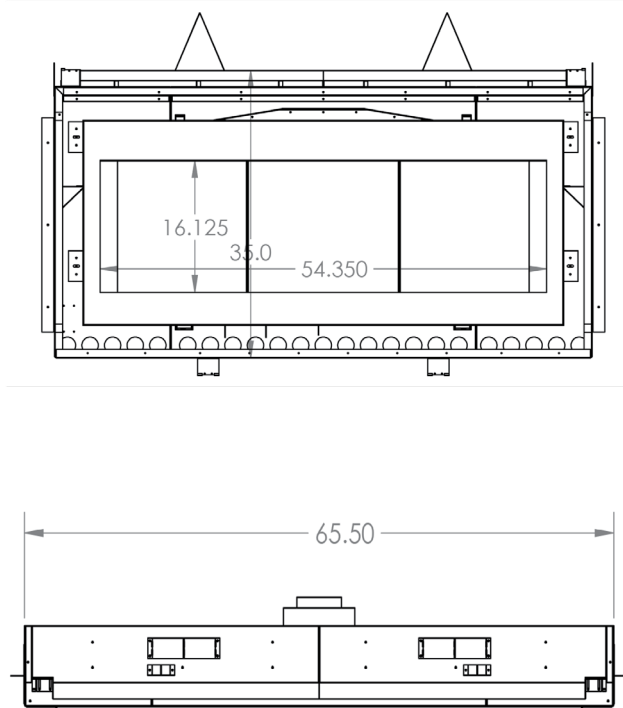


Nickel Door with  
Black Surround

**Excellence:** The quality of being outstanding.

Why would you add a traditional gas burning fireplace to your modern home? The 57-DVRS50N will fill your larger spaces with a flame that stands out. Efficiency is a key element for any modern home. Most larger fireplaces sacrifice efficiency in order to bring a larger flame. Sacrifice nothing with the slim, efficient, and outstanding 57-DVRS50N.

# TECHNICAL SPECIFICATIONS



## Standard Features

- Remote Control:** Multi Function remote control system c/w smart thermostat
- Interior Lining:** Black fiber
- Ceramic Glass Door:** Included
- Barrier Screen:** Included
- Viewing Area:** 54" W x 16" H
- Vent Size:** 5 x 8" rigid or flex
- Buner Type:** Wall To wall Steel Pan
- Firebox and Host Shell Construction** Welded/rivet and gasket, silicone free. Host shell has removable firebox which allows the shell to be installed without the firebox.

## Clearance to Combustion

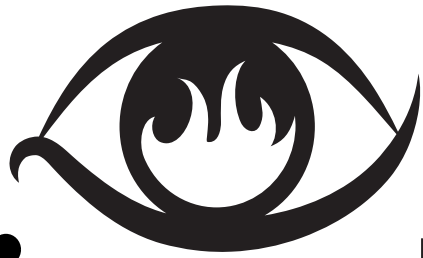
- Framing Dimensions:** 66-1/2" W x 42"H x 6" D
- Room Clearance Measured outer shell**
- Sidewall:** 18"
- Floor:** 5"
- Ceiling:** 36"
- Mantel:** 9" (Based on 8" deep matel)

## Options

- Interior Lining:** Reflective Glass Panel
- Propane:** Optional
- Door:** Black and Nickel
- Surround:** Black and Nickel

See owner's manual for framing instructions and clearance to combustible guides. For more information and pictures visit [brigantiafireplaces.com](http://brigantiafireplaces.com)

All fireplaces come standard with barrier screens which attach to the door with very little effort.



**Brigantia**  
FIREPLACES