



BIS[®]



astria
FIREPLACES[®]

HIGH EFFICIENCY
WOOD-BURNING FIREPLACES



THE BUILT IN STOVE (BIS) COLLECTION brings the timeless look of a wood-burning fireplace together with modern wood-stove technology to maximize heat output with minimum impact. Comfort, convenience and practicality create a warm centerpiece for the home.

Introduced in 1984, the **BIS Collection** responded to consumer desire to blend the beauty of a traditional wood-burning fireplace with the efficiency of modern wood-burning stoves. What began with a single entry, the **BIS Collection** has expanded to include options to fit any hearth, home décor, and heating expectation.

Each high-efficiency fireplace from the **BIS Collection** is EPA-certified to combine dependable warmth with responsible burning.

Come inside and experience the intimate elegance of the BIS Fireplace Collection.

Evolution of BIS

IN THE EARLY 80s the controlled combustion wood stove was a new phenomenon experiencing unprecedented demand, so much so that manufacturers struggled to keep up. Consumer acceptance was at an all-time high for wood-burning as they strived to reduce home heating costs and became more independent from conventional heating systems.

AS CONSUMERS VISITED RETAIL SHOWROOMS they wanted all the features of the new wood stove technology, but many expressed the desire to have it as a built-in fireplace. This was something that was not available at the time.

RECOGNIZING THE MARKET DEMAND, we introduced the first BIS in 1984. BIS simply stood for “BUILT-IN STOVE.” There was one model and three door finishes. With the development of the BIS, a new high-efficiency fireplace category was born and became the fastest growing fireplace category by percentage.

BIS CONTINUES TO EVOLVE with additional models, a variety of sizes and more options like the HeatFlo Kit and the Forced Air Heating Kit which allow you to move heat and enjoy the warmth in up to three other rooms.

YEARS AFTER CREATING the high-efficiency wood-burning fireplace category, we continue to be the market leader today; offering a size to fit your need, limitless décor possibilities, high quality manufacturing, and total flexibility to heat additional living areas of your home.

Features 4-5

Montecito Estate 6-7

- Interior: 4.0 cubic feet
- Heating Capacity: 2,500 square feet
- Max BTUs: 80,000

Villa Vista CD 8-9

- Interior: 3.8 cubic feet
- Heating Capacity: 2,500 square feet
- Max BTUs: 70,000

Villa Vista 10-11

- Interior: 3.8 cubic feet
- Heating Capacity: 2,500 square feet
- Max BTUs: 70,000

Brentwood 12-13

- Interior: 2.0 cubic feet
- Heating Capacity: 1,500 square feet
- Max BTUs: 55,000

Brentwood LV 12-15

- Interior: 2.0 cubic feet
- Heating Capacity: 1,500 square feet
- Max BTUs: 55,000

Montecito 16-17

- Interior: 2.0 cubic feet
- Heating Capacity: 1,500 square feet
- Max BTUs: 55,000

Ladera 18-19

- Interior: 2.0 cubic feet
- Heating Capacity: 1,500 square feet
- Max BTUs: 55,000

Drawings & Specs 20-21



BIS High Efficiency Wood-Burning Fireplaces

Engineering Features and Specifications

COMBUSTION

Room and outside air sources are used to keep the glass clean and feed the fire. Advanced technology secondary burn systems re-burn gases to maximize heat output and minimize particulates that leave the home.

1 Inlet Air & Glass Wash

2 Wood Fuel Combustion

3 Secondary Air Combustion

4 Catalytic Air Combustion*

*Available on select models

5 Flue Gases Exit Home

HEAT PRODUCTION

BIS fireplaces are designed to extract the maximum amount of heat from the wood that is burned. Both radiant and convective air heat is then brought into the home, providing the ultimate in warmth and comfort.

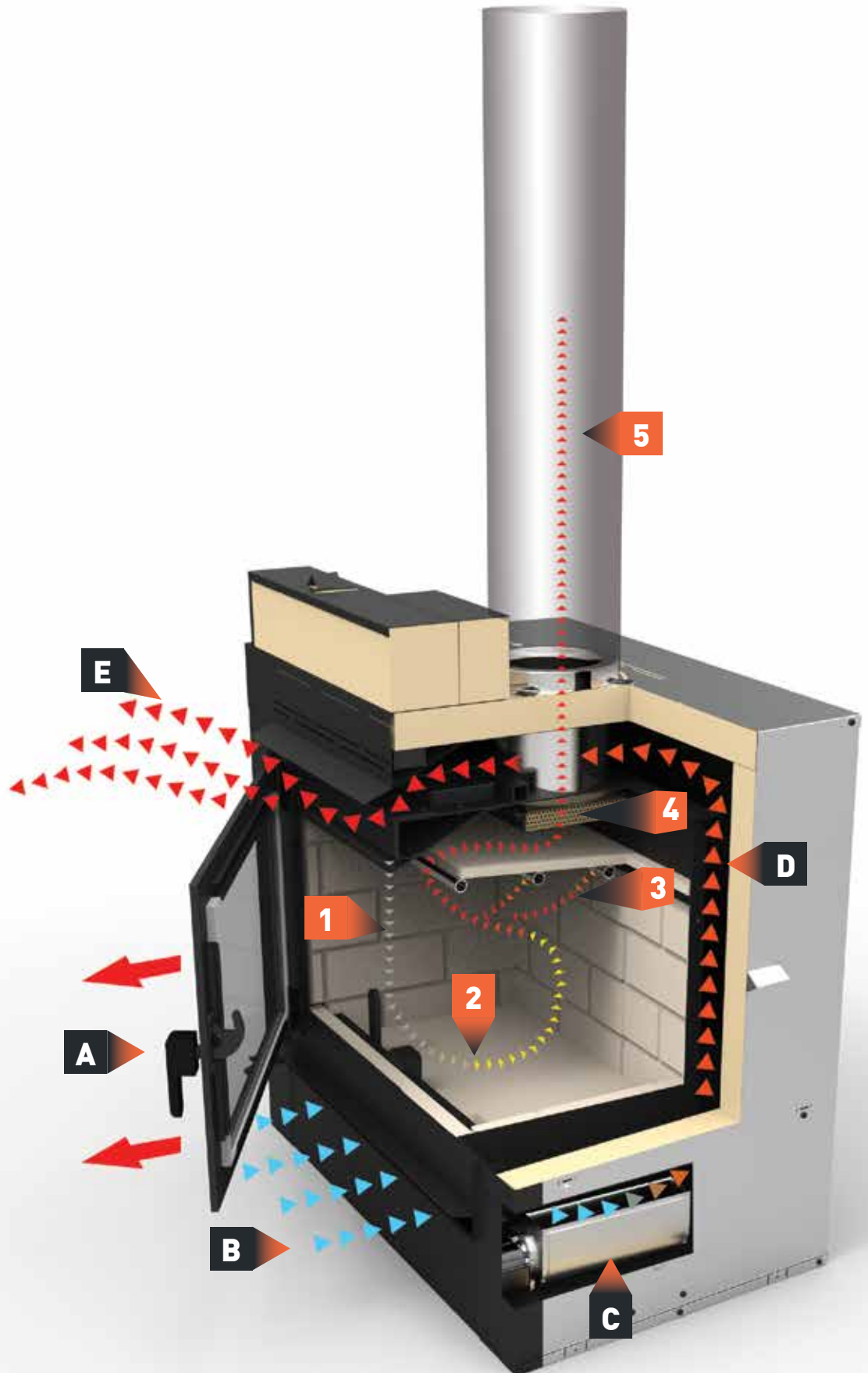
A Radiant Heat through ceramic glass

B Room Air is drawn into heat circulation chamber

C Blower can be used to enhance air flow

D Air collects heat as it travels around firebox

E Heated Air is distributed into living space



BIS Family of High Efficiency Wood-Burning Fireplaces

We created the built-in stove category and continue to design fireplace solutions that focus on quality and comfort. **THE BIS COLLECTION** is one of the largest families of high-efficiency fireplaces, offering a full range in sizes and styles.

STYLES TO FIT ANY DÉCOR

The BIS Collection offers sizes and styles to fit any décor. Large or small, tall or wide, clean-faced or designer louvers, single or double doors, steel or cast-iron fronts, there is a BIS fireplace to fit your style and heating needs. And all are built to last with heavy steel construction, welded fireboxes, and precision laser cut components.

EPA CERTIFIED FOR EFFICIENCY

All BIS fireplaces are EPA Certified. Every model has

undergone rigorous testing by an independent laboratory and meets or exceeds stringent emissions limits to ensure efficient and responsible wood-burning. Hauling wood inside is a labor of love; BIS fireplaces are built to look beautiful and get the most out of each piece of wood.

TAKE CONTROL OF YOUR COMFORT

Each model features a variable-rate control that allows you to regulate wood usage and comfort. This allows you to enjoy the fire longer and put more heat into your home, not up the chimney. This is a big advantage over single-rate fireplaces that burn wood much faster, send more heat up the chimney, and don't allow for heat control in the home. Blower Kits, HeatFlo Air Kits, and Forced Air Kits are available to help distribute the heat throughout your living area.

Multiple Heating Options

BIS High Efficiency Wood-Burning Fireplaces not only look beautiful; they are also powerful heating appliances. Depending on your needs, there are several options to help you put the heat where you want it.

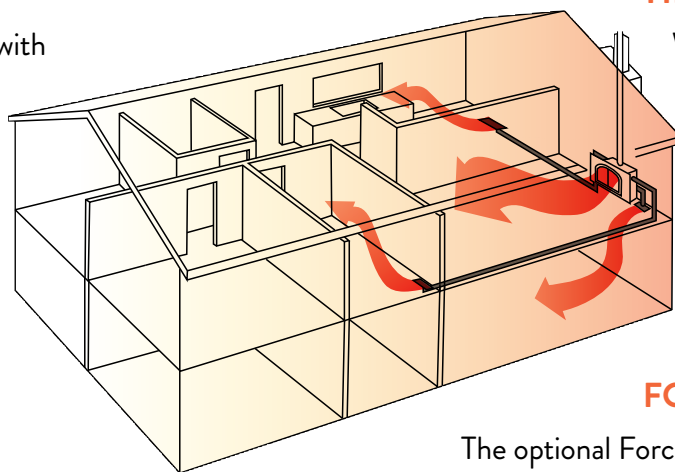
RADIANT HEATING

All BIS models come standard with outside air kits, high-density refractory interiors, variable-rate air inlet controls, secondary burn systems and ceramic glass fronts. These components all work together to efficiently burn wood, retain heat in the firebox, and radiate warmth directly into the room.

WARM AIR CIRCULATION

The firebox of all BIS models is surrounded by an outer insulated shell and includes openings above and below the fireplace doors. Room air is allowed to enter this area between the firebox and outer shell, and through natural

convection will be drawn in below the firebox, warm up, and exit above the firebox. This gentle flow of heat recirculation can be enhanced with a blower that will move more air through the system and distribute it farther away.



HEATFLO AIR KIT OPTION

With the optional HeatFlo air Kit, warm air circulation can be shared with multiple rooms. Through natural convection, warm air can be directed up to 10 feet away into one or two adjacent rooms, giving you the flexibility to heat up to three areas.

FORCED AIR KIT OPTION

The optional Forced Air Kit provides up to 25% more heat from the same fire. This additional heat can be distributed up to 50 feet, to three additional rooms, including rooms on a lower floor. The blower and thermostat included in the kit work together to allow automatic control of heat distribution for balanced and controlled comfort.

MONTECITO ESTATE



The 4.0 cu. ft. firebox and 30” log capacity is one of the largest available in its category. The MONTECITO ESTATE beautifully combines craftsmanship with the power of clean, controllable combustion heating. The gorgeous selection of doors and facades allows you to achieve a customized look that reflects your style.

STANDARD FEATURES

- ◆ Circulating design features facade, arch doors and ceramic glass for optimum heat transfer
- ◆ EPA variable-rate certified and Washington State approved high-efficiency wood heater
- ◆ Spacious 4.0 cubic foot insulated firebox that accepts up to 30” log size for increased performance
- ◆ Steel double doors with heat resistant door handles that stay cool to the touch
- ◆ White stacked textured refractory panels with integrated ash lip and decorative cast iron log retainer
- ◆ Catalytic combustor for maximum performance
- ◆ Bypass control: Greater airflow during startup for faster wood ignition and no smoke spillage when reloading
- ◆ Includes insulated outside air kit (required for use)
- ◆ 80,000 BTUs and heats up to 2,500 square feet*
- ◆ Efficient air wash system that keeps glass clean
- ◆ Includes heat activated 200 CFM variable-speed blower for time-delayed heat distribution
- ◆ Durable high temperature paint finish
- ◆ Limited Lifetime Warranty

**Square-foot heating capacities are approximations only. Actual performance may vary depending upon home design and insulation, ceiling heights, climate, condition and type of wood used, appliance location, burn rate, accessories chosen, chimney installation and how the appliance is operated.*



ADDITIONAL OPTIONS

Hammered Steel or Smooth Doors (One Required)

Hammered Steel or Smooth Facade (One Required)

Forced Air Kit for forced air zone heating to multiple locations

PRODUCT SPECIFICATIONS

Glass Viewing Area (W x H)	31" x 15"
Firebox Interior (W x H x D)	31" x 14-1/2" x 14"
Interior Cubic Feet	4.0
Maximum Log Size	30"
EPA Rating	1.3 grams/hr
Max BTU's	80,000
Heating Capacity (up to)	2,500 sq. ft.
Thermal Efficiency	70%
Blower	200 CFM

Options

DOORS (REQUIRED)



Hammered-Steel



Smooth

FACADE (REQUIRED)



Hammered-Steel



Smooth

VILLA VISTA CD



With superior heat output and high-efficiency operation, the VILLA VISTA CD fireplace excels. It's the ideal option for large spaces where a clean, contemporary look is desired. Its tall and expansive size features a single door that provides an unobstructed viewing area. Choose from several modern louver kits to finish the fireplace to your taste.

STANDARD FEATURES

- ◆ Sleek stylish design enhances any decor
- ◆ EPA variable-rate certified high-efficiency wood heater
- ◆ Large ceramic glass opening with air wash system that keeps the glass clean
- ◆ Precision laser-cut heavy door with heat resistant door handle and easy-close latch
- ◆ Primary air combustion control for variable heat output
- ◆ Advanced Combustion System with bypass control for maximum performance
- ◆ 70,000 BTUs and heats up to 2,500 square feet*
- ◆ 3.8 cubic foot insulated firebox that accepts up to 20" log size for increased performance
- ◆ Smooth white interior panels with integrated ash lip and heavy steel log retainer
- ◆ Durable high temperature paint finish
- ◆ Includes insulated outside air kit (required for use)
- ◆ Optional heat activated 200 CFM variable speed blower for time-delayed heat distribution
- ◆ Limited Lifetime Warranty

**Square-foot heating capacities are approximations only. Actual performance may vary depending upon home design and insulation, ceiling heights, climate, condition and type of wood used, appliance location, burn rate, accessories chosen, chimney installation and how the appliance is operated.*



ADDITIONAL OPTIONS

- Madera, Sleek or Hollister Louver Kits (One Required)

- Clean-Face Kit that covers top louver area (HeatFlo Kit Required)

- HeatFlo Kit for natural flow zone heating to multiple locations

- Forced Air Kit for forced air zone heating to multiple locations

- Heat Activated Blower for same room heat distribution

- Variable Speed Switch for Blower

PRODUCT SPECIFICATIONS

Glass Viewing Area (W x H)	17-7/8" x 23-1/4"
Firebox Interior (W x H x D)	22" x 20" x 15"
Interior Cubic Feet	3.8
Maximum Log Size	20"
EPA Rating	4.1 grams/hr
Max BTU's	70,000
Heating Capacity (up to)	2,500 sq. ft.
Thermal Efficiency	75%
Blower	200 CFM

Options

LOUVERS (ONE REQUIRED)



Madera



Sleek



Hollister

VILLA VISTA



The VILLA VISTA fireplace is the ideal option for large spaces where a more traditional style is desired. Its tall and expansive size features a single arch-top door that provides an unobstructed viewing area. Pair with one of several arched louver kits and you have a beautiful fireplace that heats as good as it looks.

STANDARD FEATURES

- ◆ Circulating louvered design features ceramic glass for optimum heat transfer (optional clean-face kit available)
- ◆ EPA variable-rate certified high-efficiency wood heater
- ◆ 3.8 cubic foot insulated firebox that accepts up to 20" log size for increased performance
- ◆ White herringbone textured refractory panels with integrated ash lip and decorative cast iron log retainer
- ◆ Air combustion control for variable heat output with air boost for faster wood ignition during startup
- ◆ Catalytic combustor for maximum performance with bypass control
- ◆ Includes insulated outside air kit (required for use)
- ◆ 70,000 BTUs and heats up to 2,500 square feet*
- ◆ Efficient air wash system that keeps glass clean
- ◆ Cast iron door with heat resistant door handle that stays cool to the touch
- ◆ Optional heat activated 200 CFM variable speed blower for time-delayed heat distribution
- ◆ Durable high temperature paint finish
- ◆ Limited Lifetime Warranty

**Square-foot heating capacities are approximations only. Actual performance may vary depending upon home design and insulation, ceiling heights, climate, condition and type of wood used, appliance location, burn rate, accessories chosen, chimney installation and how the appliance is operated.*



ADDITIONAL OPTIONS

- Black Arch Door (Required)

- Del Sol, Diamante or Strada Louver Kits (One Required)

- Clean-Face Kit that covers top louver area (HeatFlo Kit Required)

- HeatFlo Kit for natural flow zone heating to multiple locations

- Forced Air Kit for forced air zone heating to multiple locations

- Heat Activated Blower

- Variable Speed Switch for Blower

PRODUCT SPECIFICATIONS

Glass Viewing Area (W x H)	22-1/2" x 19"
Firebox Interior (W x H x D)	22" x 20" x 15"
Interior Cubic Feet	3.8
Maximum Log Size	20"
EPA Rating	4.1 grams/hr
BTU's	70,000
Heating Capacity (up to)	2,500 sq. ft.
Thermal Efficiency	75%
Blower	200 CFM

Options

LOUVERS (ONE REQUIRED)



Del Sol



Diamante



Strada

HIGH EFFICIENCY WOOD-BURNING FIREPLACES

BRENTWOOD



The BRENTWOOD combines beauty and efficiency to offer an exceptional wood-burning unit in a traditional design with a heavy cast-iron arch door and horizontal louvers. With advanced combustion and heat-circulating features, you can enjoy unsurpassed warmth and comfort.

STANDARD FEATURES

- ◆ Circulating louvered design features ceramic glass for optimum heat transfer
- ◆ EPA variable-rate certified and Washington State approved high-efficiency wood heater
- ◆ 2.0 cubic foot insulated firebox that accepts up to 19" log size for increased performance
- ◆ White stacked textured refractory panels with integrated ash lip and decorative cast iron log retainer
- ◆ Air combustion control for variable heat output with air boost for faster wood ignition during startup
- ◆ Includes insulated outside air kit (required for use)
- ◆ 55,000 BTUs and heats up to 1,500 square feet*
- ◆ Efficient air wash system that keeps glass clean
- ◆ Cast Iron Door with heat resistant door handle that stays cool to the touch
- ◆ Durable high temperature paint finish
- ◆ Limited Lifetime Warranty

**Square-foot heating capacities are approximations only. Actual performance may vary depending upon home design and insulation, ceiling heights, climate, condition and type of wood used, appliance location, burn rate, accessories chosen, chimney installation and how the appliance is operated.*



OPTIONS/ACCESSORIES

- Cast Iron Door (Required)

- Clean-Face Kit that covers top louver area (HeatFlo Kit Required)

- HeatFlo Kit for natural flow zone heating to multiple locations

- Forced Air Kit for forced air zone heating to multiple locations

- Heat Activated Blower

- Variable Speed Switch for Blower

PRODUCT SPECIFICATIONS

Glass Viewing Area (W x H)	22-1/2" x 12-1/4"
Firebox Interior (W x H x D)	22" x 11-3/4" x 12"
Interior Cubic Feet	2.0
Maximum Log Size	19"
EPA Rating	3.7 grams/hr
BTU's	55,000
Heating Capacity (up to)	1,500 sq. ft.
Thermal Efficiency	86.6%
Blower	200 CFM

Options

DOORS (REQUIRED)



Cast Iron Arch Pane

BRENTWOOD LV



The BRENTWOOD LV adds a touch of sophisticated elegance to any room. Choose from a traditional horizontal louvered face design or a sleek, clean-face design using the optional clean-face kit paired with the HeatFlo air kit. Whatever your décor, the Brentwood LV can give you what you're looking for in a beautiful and efficient fireplace.

STANDARD FEATURES

- ◆ Circulating design features ceramic glass for optimum heat transfer
- ◆ EPA variable-rate certified and Washington State approved high-efficiency wood heater
- ◆ 2.0 cubic foot insulated firebox that accepts up to 19" log size for increased performance
- ◆ White smooth refractory panels with integrated ash lip and decorative cast iron log retainer
- ◆ Air combustion control for variable heat output with air boost for faster wood ignition during startup
- ◆ Includes insulated outside air kit (required for use)
- ◆ 55,000 BTUs and heats up to 1,500 square feet*
- ◆ Efficient air wash system that keeps glass clean
- ◆ Steel door with heat resistant door handle that stays cool to the touch
- ◆ Includes heat activated 175 CFM variable speed blower for time-delayed heat distribution
- ◆ Durable high temperature paint finish
- ◆ Lifetime Limited Warranty

**Square-foot heating capacities are approximations only. Actual performance may vary depending upon home design and insulation, ceiling heights, climate, condition and type of wood used, appliance location, burn rate, accessories chosen, chimney installation and how the appliance is operated.*



ADDITIONAL OPTIONS

Choose Louvers or Clean-Face Kit that covers top louver area
(HeatFlo Kit Required)

HeatFlo Kit for natural flow zone heating to multiple locations

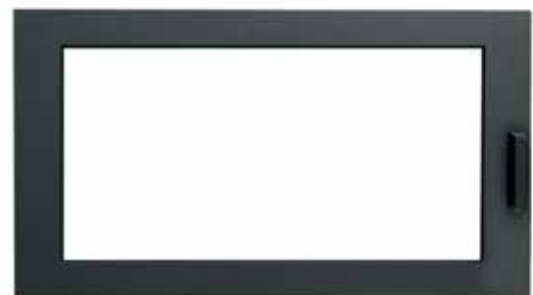
Forced Air Kit for forced air zone heating to multiple locations

Options

PRODUCT SPECIFICATIONS

Glass Viewing Area (W x H)	22-1/2" x 12-1/4"
Firebox Interior (W x H x D)	22" x 11-3/4" x 12"
Interior Cubic Feet	2.0
Maximum Log Size	19"
EPA Rating	3.7 grams/hr
BTU's	55,000
Heating Capacity (up to)	1,500 sq. ft.
Thermal Efficiency	86.6%
Blower	175 CFM

DOORS (STANDARD)



Square Pane

MONTECITO



The 2.0 cu. ft. firebox with 19” log capacity provides ample space for a dramatic fire that is ideal for smaller spaces. The MONTECITO exudes classic beauty that transforms any room into an inviting gathering space. The traditional style arch-design facade and door is available in a variety of options for a customized look.

STANDARD FEATURES

- ◆ Circulating design features facade, arch door and ceramic glass for optimum heat transfer
- ◆ EPA variable-rate certified and Washington State approved high-efficiency wood heater
- ◆ 2.0 cubic foot insulated firebox that accepts up to 19” log size for increased performance
- ◆ White stacked textured refractory panels with integrated ash lip and decorative cast iron log retainer
- ◆ Air combustion control for variable heat output with air boost for faster wood ignition during startup
- ◆ Includes insulated outside air kit (required for use)
- ◆ 55,000 BTUs and heats up to 1,500 square feet*
- ◆ Efficient air wash system that keeps glass clean
- ◆ Cast iron or steel door available with heat resistant door handle that stays cool to the touch
- ◆ Includes heat activated 200 CFM variable speed blower for time-delayed heat distribution
- ◆ Durable high temperature paint finish
- ◆ Limited Lifetime Warranty

**Square-foot heating capacities are approximations only. Actual performance may vary depending upon home design and insulation, ceiling heights, climate, condition and type of wood used, appliance location, burn rate, accessories chosen, chimney installation and how the appliance is operated.*



ADDITIONAL OPTIONS

Cast Iron, Hammered Steel or Smooth Door (One Required)

Hammered Steel or Smooth Facade (One Required)

HeatFlo Kit for natural flow zone heating to multiple locations

Forced Air Kit for forced air zone heating to multiple locations

PRODUCT SPECIFICATIONS

Glass Viewing Area (W x H)	22-1/2" x 12-1/4"
Firebox Interior (W x H x D)	22" x 11-3/4" x 12"
Interior Cubic Feet	2.0
Maximum Log Size	19"
EPA Rating	3.7 grams/hr
BTU's	55,000
Heating Capacity (up to)	1,500 sq. ft.
Thermal Efficiency	86.6%
Blower	200 CFM

Options

DOORS (REQUIRED)



Cast-Iron



Smooth



Hammered-Steel

FACADE (REQUIRED)



Smooth



Hammered-Steel

LADERA



The LADERA is a compact and stylish heater with a 2.0 cu. ft. firebox that accepts logs up to 18 inches for large flames, long burn times, and sustained warmth. And with a clean-face design and expansive viewing area, the Ladera allows you to take pleasure in the beauty of an unobstructed fire.

STANDARD FEATURES

- ◆ Circulating radiant design features ceramic glass for optimum heat transfer
- ◆ EPA variable-rate certified and Washington State approved high-efficiency wood heater
- ◆ 2.0 cubic foot insulated firebox that accepts up to 18" log size for increased performance
- ◆ White stacked textured refractory panels with integrated ash lip and decorative cast iron log retainer
- ◆ Primary air combustion control for variable heat output
- ◆ Advanced Combustion System with bypass control for maximum performance
- ◆ Includes insulated outside air kit (required for use)
- ◆ 55,000 BTUs and heats up to 1,500 square feet*
- ◆ Efficient air wash system that keeps glass clean
- ◆ Steel door with heat resistant door handle that stays cool to the touch
- ◆ Durable high temperature paint finish
- ◆ Limited Lifetime Warranty

**Square-foot heating capacities are approximations only. Actual performance may vary depending upon home design and insulation, ceiling heights, climate, condition and type of wood used, appliance location, burn rate, accessories chosen, chimney installation and how the appliance is operated.*



OPTIONS/ACCESSORIES

Cast Iron Surround Kit

Forced Air Kit for forced air zone heating to multiple locations

Options

PRODUCT SPECIFICATIONS

Glass Viewing Area (W x H)	20" x 13-1/4"
Firebox Interior (W x H x D)	19-1/2" x 13-1/4" x 12"
Interior Cubic Feet	2.0
Maximum Log Size	18"
EPA Rating	1.8 grams/hr
BTUs	55,000
Heating Capacity (up to)	1,500 sq. ft.
Thermal Efficiency	63%
Blower	175 CFM

Cast Iron Surround Kit



SPECIFICATIONS

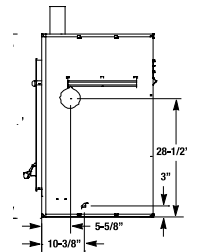
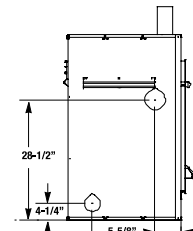
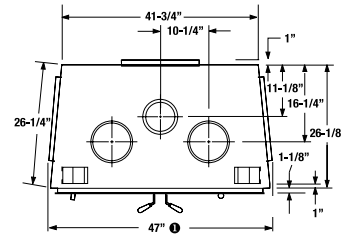
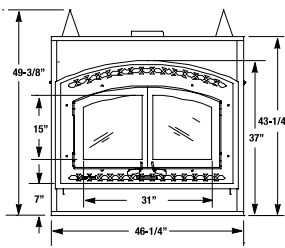
Front View

Top View

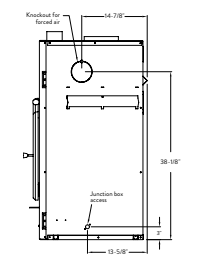
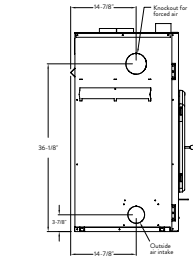
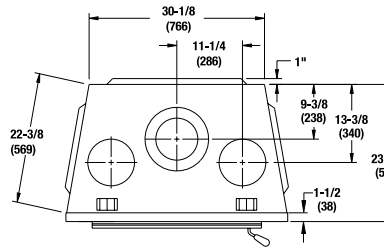
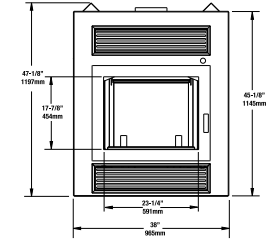
Left Side View

Right Side View

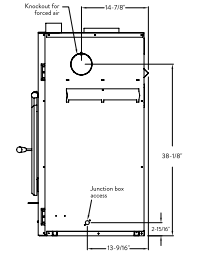
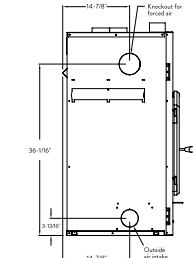
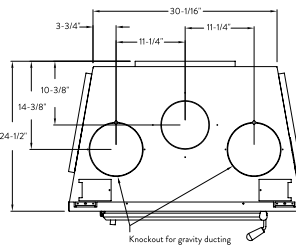
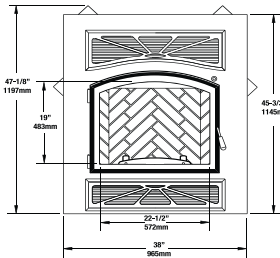
MONTECITO ESTATE



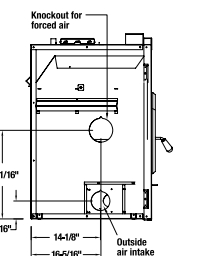
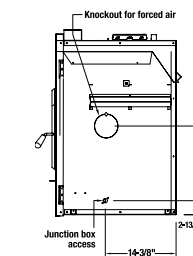
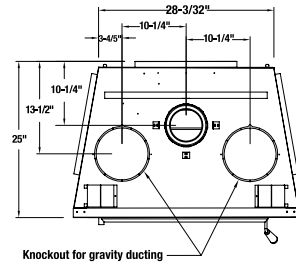
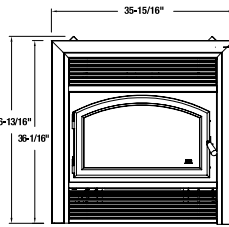
VILLA VISTA CD



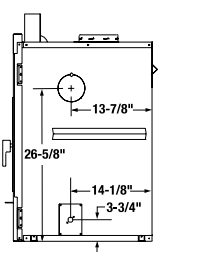
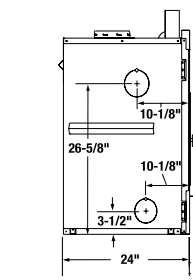
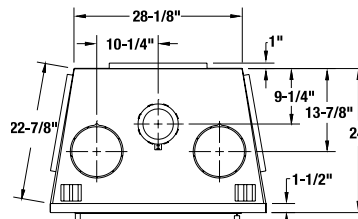
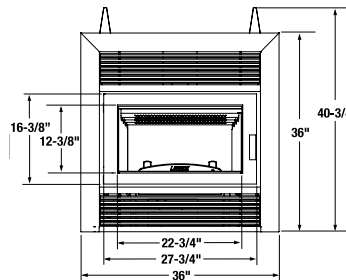
VILLA VISTA



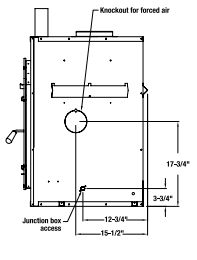
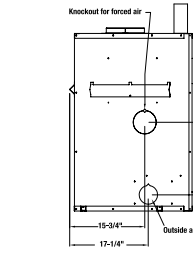
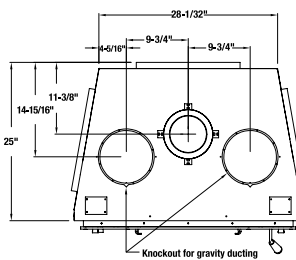
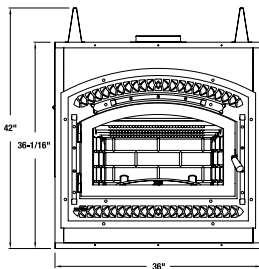
BRENTWOOD



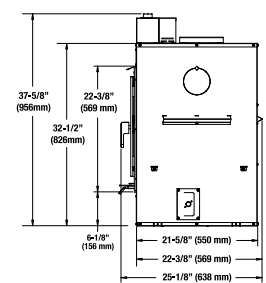
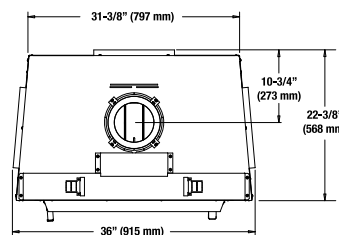
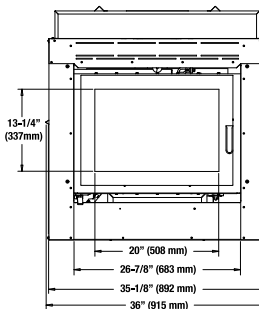
BRENTWOOD LV



MONTECITO



LADERA



	MONTECITO ESTATE	VILLA VISTA CD	VILLA VISTA	BRENTWOOD	BRENTWOOD LV	MONTECITO	LADERA
Glass Viewing Area (W x H)	31" x 15"	17-7/8" x 23-1/4"	22-1/2" x 19"	22-1/2" x 12-1/4"	22-1/2" x 12-1/4"	22-1/2" x 12-1/4"	20" x 13-1/4"
Firebox Interior (W x H x D)	31" x 14-1/2" x 14"	22" x 20" x 15"	22" x 20" x 15"	22" x 11-3/4" x 12"	22" x 11-3/4" x 12"	22" x 11-3/4" x 12"	19-1/2" x 13-1/4" x 12"
EPA Certified ¹	Yes Variable Rate	Yes Variable Rate	Yes Variable Rate	Yes Variable Rate	Yes Variable Rate	Yes Variable Rate	Yes Variable Rate
EPA Rating	1.3 grams/hr	4.1 grams/hr	4.1 grams/hr	3.7 grams/hr	3.7 grams/hr	3.7 grams/hr	1.8 grams/hr
Washington State Approved ¹	Yes	No	No	Yes	Yes	Yes	Yes
Secondary Air Combustion	Yes	Yes	Yes	Yes	Yes	Yes	Yes
Catalytic Air Combustion	Yes	Yes	Yes	No	No	No	Yes
Max BTU's	80,000	70,000	70,000	55,000	55,000	55,000	55,000
Heating Capacity ² (up to)	2,500 sq. ft.	2,500 sq. ft.	2,500 sq. ft.	1,500 sq. ft.	1,500 sq. ft.	1,500 sq. ft.	1,500 sq. ft.
Thermal Efficiency	70%	75%	75%	86.6%	86.6%	86.6%	63%
Blower	Included 200 CFM	Optional 200 CFM	Optional 200 CFM	Optional 200 CFM	Included 175 CFM	Included 200 CFM	Included 175 CFM
Clean Face Kit Option	No	Yes	Yes	Yes	Yes	No	No
HeatFlo Air Kit Option	No	Yes	Yes	Yes	Yes	Yes	No
Forced Air Kit Option	Yes	Yes	Yes	Yes	Yes	Yes	Yes
Chimney Size	7"	7"	7"	6"	6"	6"	6"
Flat Wall Framing ³	46-1/4" x 50" x 27-1/2"	38-1/4" x 47-3/8" x 24"	38-1/4" x 47-3/8" x 24"	36-3/8" x 37" x 24-1/2"	36-1/4" x 40-3/4" x 25"	36-1/4" x 42" x 24-1/2"	36" x 37-3/4" x 22"
Corner Framing ³	46-1/4" x 50" x 47"	38-1/4" x 47-3/8" x 38-5/8"	38-1/4" x 47-3/8" x 38-5/8"	36-3/8" x 37" x 38-1/2"	36-1/4" x 40-3/4" x 38-3/8"	36-1/4" x 42" x 37-1/2"	36" x 37-3/4" x 37-1/4"
Weight	520 lbs.	444 lbs.	403 lbs.	385 lbs.	385 lbs.	300 lbs.	215 lbs.
Warranty	Limited Lifetime	Limited Lifetime	Limited Lifetime	Limited Lifetime	Limited Lifetime	Limited Lifetime	Limited Lifetime

¹ In 2015 the U.S. Environmental Protection Agency (EPA) strengthened its clean air standards for residential wood and pellet heaters to make new heaters significantly cleaner and improve air quality in communities where people burn wood for heat. The New Source Performance Standards (NSPS) mandate emissions limits of 4.5 grams/hr for both catalytic and non-catalytic wood heaters. In Washington State the limits are 4.5 grams/hr for non-catalytic wood heaters, and 2.5 grams/hr for catalytic wood heaters.

² Square-foot heating capacities are approximations only. Actual performance may vary depending upon home design and insulation, ceiling heights, climate, condition and type of wood used, appliance location, burn rate, accessories chosen, chimney installation and how the appliance is operated.

³ Framing dimensions are supplied for planning purposes only. Diagrams, illustrations and photographs are not to scale. Consult installation instructions prior to starting installation.

Product designs, materials, dimensions, specifications, colors and prices are subject to change or discontinuance without notice.

As with any fireplace, this appliance is extremely hot during operation. Read and understand all operating instructions before using this appliance. For further information, consult your dealer.



NOTES



astria
FIREPLACES®

© 2019 Innovative Hearth Products

785708M 06/19

Visit us online
Astria.us.com

