

LED Backlit Panel (50W)

Features:

- Input Voltage:100-277VAC 50/60Hz.
- UL ,DLC certified.
- 120-130 lm/W high lumen efficacy, 80+ CRI.
- 0-10V UL listed high efficiency LED driver.
- High efficiency LM80 SMD LEDs.
- Designed for 50,000 hours lifetime.
- Instant startup, soft light, no glare, no noise.
- Easy for installation.

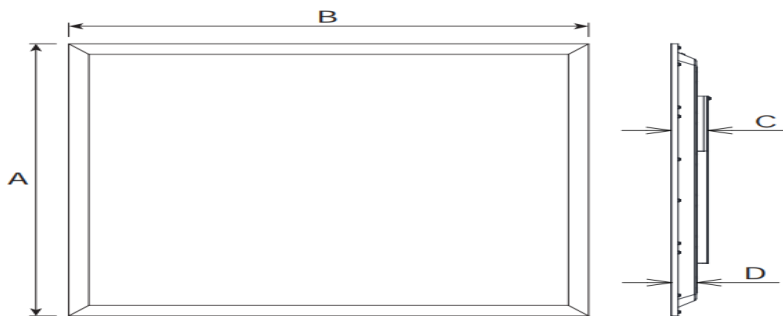


Application:

- ◆ Factory, offices .
- ◆ Living room, clubs, lobbies.
- ◆ Supermarkets, school, hotel.
- ◆ Exhibitions, etc..



Product Dimension:



Dimension (mm)

A	B	C	D
603	1213	36	32

Specifications

4000K

Model:	KIPA605N6031210 (BL)
Wattage:	50W
Lumens:	6050LM
CCT:	4000K
Input Voltage:	100-277VAC 50/60hz
Power Factor:	>0.9
Efficacy:	121LM/W
CRI:	>80
THD:	<20
Dimmable:	Yes
Dimensions:	2*4FT 603*1213mm
Lifespan	>50,000hours
Beam angle	120°
Operating Temperature:	-20°C to 50°C
IP Grade:	IP20
Certification:	UL, DLC

5000K

Model:	KIPA605N6031210 (BL)
Wattage:	50W
Lumens:	6100LM
CCT:	5000K
Input Voltage:	100-277VAC 50/60hz
Power Factor:	>0.9
Efficacy:	122LM/W
CRI:	>80
THD:	<20
Dimmable:	Yes
Dimensions:	2*4FT 603*1213mm
Lifespan	>50,000hours
Beam Angle	120°
Operating Temperature:	-20°C to 50°C

IP Grade:	IP20
Certification:	UL, DLC

6000K

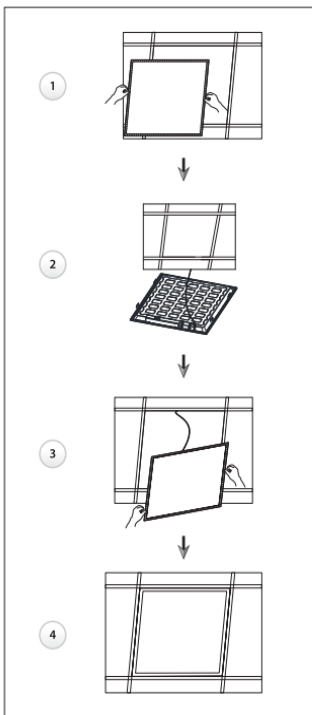
Model:	KIPA605N6031210 (BL)
Wattage:	50W
Lumens:	6100LM
CCT:	6000K
Input Voltage:	100-277VAC 50/60hz
Power Factor:	>0.9
Efficacy:	122LM/W
CRI:	>80
THD:	<20
Dimmable:	Yes
Dimensions:	2*4FT 603*1213mm
Lifespan	>50,000hours
Beam angle	120°
Operating Temperature:	-20°C to 50°C
IP Grade:	IP20
Certification:	UL

Package

Size	Qty/Carton	Gross Weight	Net Weight
124*25*63cm	6	27.2Kg	24.8Kg

Installation instructions

Recessed



Suspended

