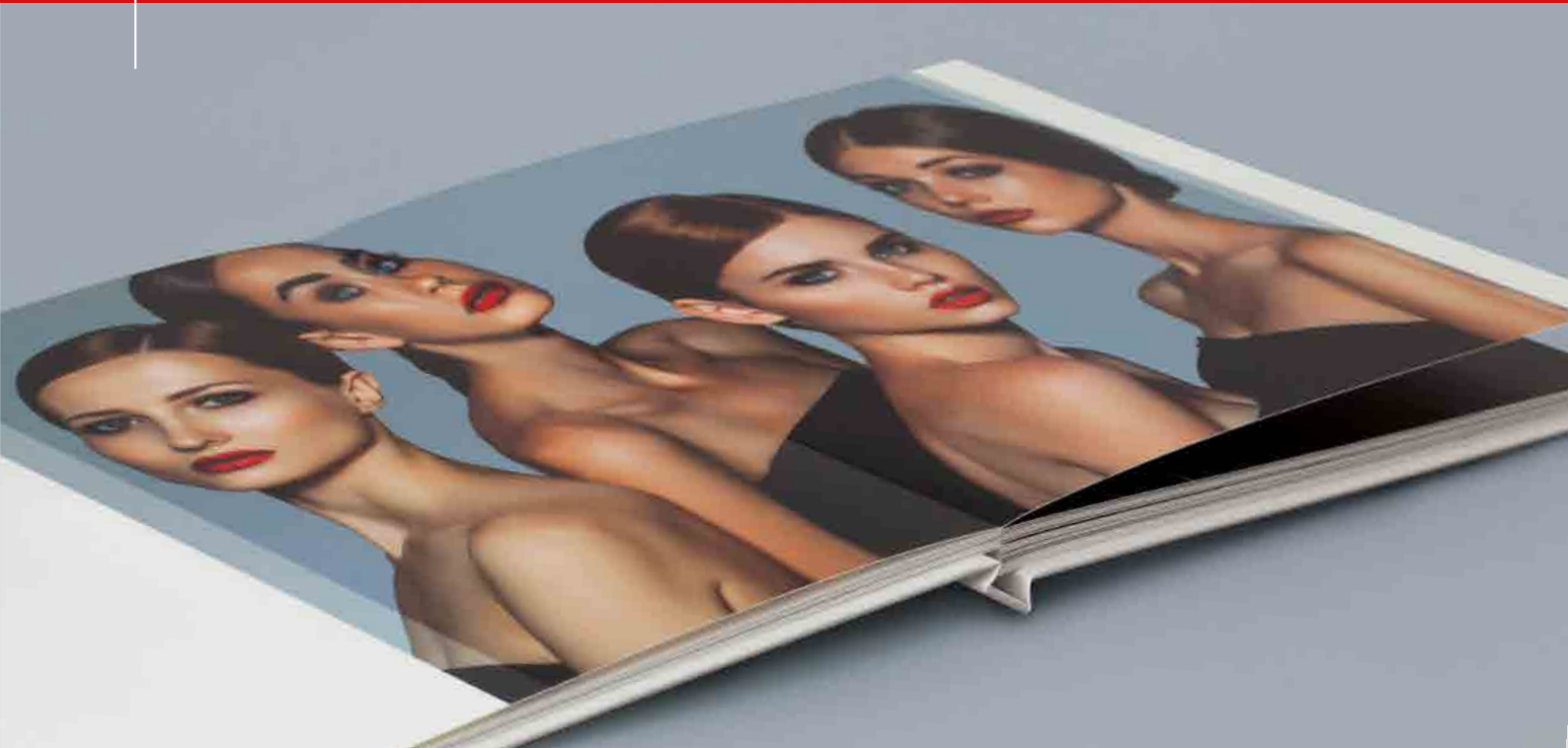


# mita**block** 450

automatic hotmelt section gluing machine



---

We deliver the mita**block** 450  
in the following regions only:  
**Europe, Canada, North America**

---



| digi**book**<sup>+</sup>  
technology

# mitablock 450

## automatic hotmelt section gluing machine

The mitablock 450 is a fully automatic layflat hotmelt section gluing machine designed especially for the production of high-quality layflat book blocks in single- to very short-runs. Thanks to the high degree of automation with simple format setup times, ease of operation and small footprint, it achieves a unique position in the layflat book-on-demand sector in the lower speed range (up to 600 gluings/h).

### Special features

- ▶ The machine is loaded via the pile feeder and the separate board feeder. Thereby an exact alignment as well as a double sheet control takes place. Different infeed sequences are possible via the board feeder.
- ▶ There is no need for makeready for different formats, as the format data is transferred to the press via the manually adjustable side guides of the feeder and automatic measurement of the sheet length.
- ▶ The machine is set-up by entering the number of signatures to be glued and the desired board scheme. Alternatively, the machine can be controlled via a print mark or a barcode that passes on the signal when a block is complete. In this way, blocks with different page packs can be produced continuously without having to change over the machine.
- ▶ Very different paper and board thicknesses and qualities can be processed. The creasing tools can also be converted to different geometries if required.
- ▶ The very thin hotmelt glue application (less than 20 g/m<sup>2</sup>) is carried out via a stationary glue roller.
- ▶ The book block is assembled horizontally on a table. Exact alignment is ensured by sensor-controlled re-adjustment of each individual folded sheet.
- ▶ The machine is operated by one operator who, due to the speed of the machine, can also perform other tasks on the side.

### Options

- ▶ **barcode reader** in the infeed for completeness verification
- ▶ **inline pressing** device at the machine exit
- ▶ **offline pressing** device for additional pressing of finished book blocks



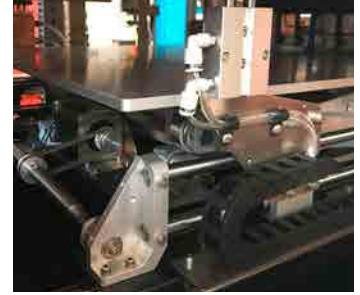
pile feeder for printed sheets



feeder for cardboards



removable glue roller  
with glue tank



vacuum table

## Workflow

The mita**block 450** is set up via data input or “recipe retrieval” on the touch screen. One-side printed sheets are fed into a pile feeder in the correct sequence. The individually removed sheets are separated from the pile by means of suction and fed to the creasing station. The creased sheets are then folded and transported to the gluing station.

Gluing of the signatures is done by means of hotmelt glue. All signatures, except the first one of each book block, are glued over the entire surface. The signatures are precisely conveyed to the worktable by transport rollers, where they are set down in register.

Pressure rollers press each individual signature against the preceding signature. The finished book block is automatically discharged from the worktable onto a delivery surface.

An additional pressing station at the exit is available as an option.



mita**block 450**



# Technical specifications

<b>Speed</b>	up to 600 sections per hour (without carton) up to 420 sections per hour (with carton)	
<b>Height x width (open)</b>	min. 152 mm x 305 mm	max. 460 mm x 920 mm
<b>Paper thickness</b>	min. 0,15 mm	max. 0,30 mm
<b>Paper grammage</b>	Minimum dependency on paper texture (more details after sampling)	
<b>Cardboard thickness</b>	min. 0,35 mm	max. 1,00 mm
<b>Glue consumption</b>	approx. 20 g/m <sup>2</sup> (depending on paper-/ cardboard surface)	
<b>Electrics</b>	2 kW (220 V, 50 Hz)	
<b>Air consumption</b>	100 NI/min. (6 bar)	
<b>Floor space (closed)</b>	2.30 m x 0.9 m	
<b>Weight</b>	approx. 650 kg	

*Technical specifications subject to change without notice*

**Digibook Technology Sagl**

Via Angelo Maspoli 21  
CH- 6850 Mendrisio, Switzerland  
T +41 91 6467930  
F +41 91 9932250  
info@digibook.tech  
www.digibook.tech

**Digibook Service GmbH**

Steinbergstraße 3  
DE-04288 Leipzig, Germany  
T +49 34297 919709  
F +49 34297 919711  
service@digibook.tech  
www.digibook.tech

**Digibook Technology USA, Inc.**

7905 North Route 130  
Pennsauken, NJ 08110, USA  
T +1 510 507-3811  
info@digibook.tech  
www.digibook.tech