

An aerial photograph of a river valley. A winding river flows through the center, flanked by green hills. A town with a grid-like street pattern is visible in the middle ground. A road or path runs parallel to the river. The image is overlaid with a blue semi-transparent banner containing text.

# The Road Of Rebirth—Place making in Bidur from the Perspective of Cultural Landscape

## 重生之路：文化景观视角下必都的场所营造

Zhou Weisi ,Urban planner,Wlsp



## Working Background

2015, Nepal experienced the serious earthquake, the cities were badly destroyed.





# Working Background

## ■ Based on the "Belt & Road" strategy, carry out post-disaster reconstruction planning

**Bidur** is located at the **important node** connecting Gyirong Port of China and the city agglomeration in Kathmandu valley and will usher in brand-new development opportunities. The implementation of **the "Belt & Road" strategy** of China promotes hand-in-hand development of China and Nepal



Figure Bidur location map

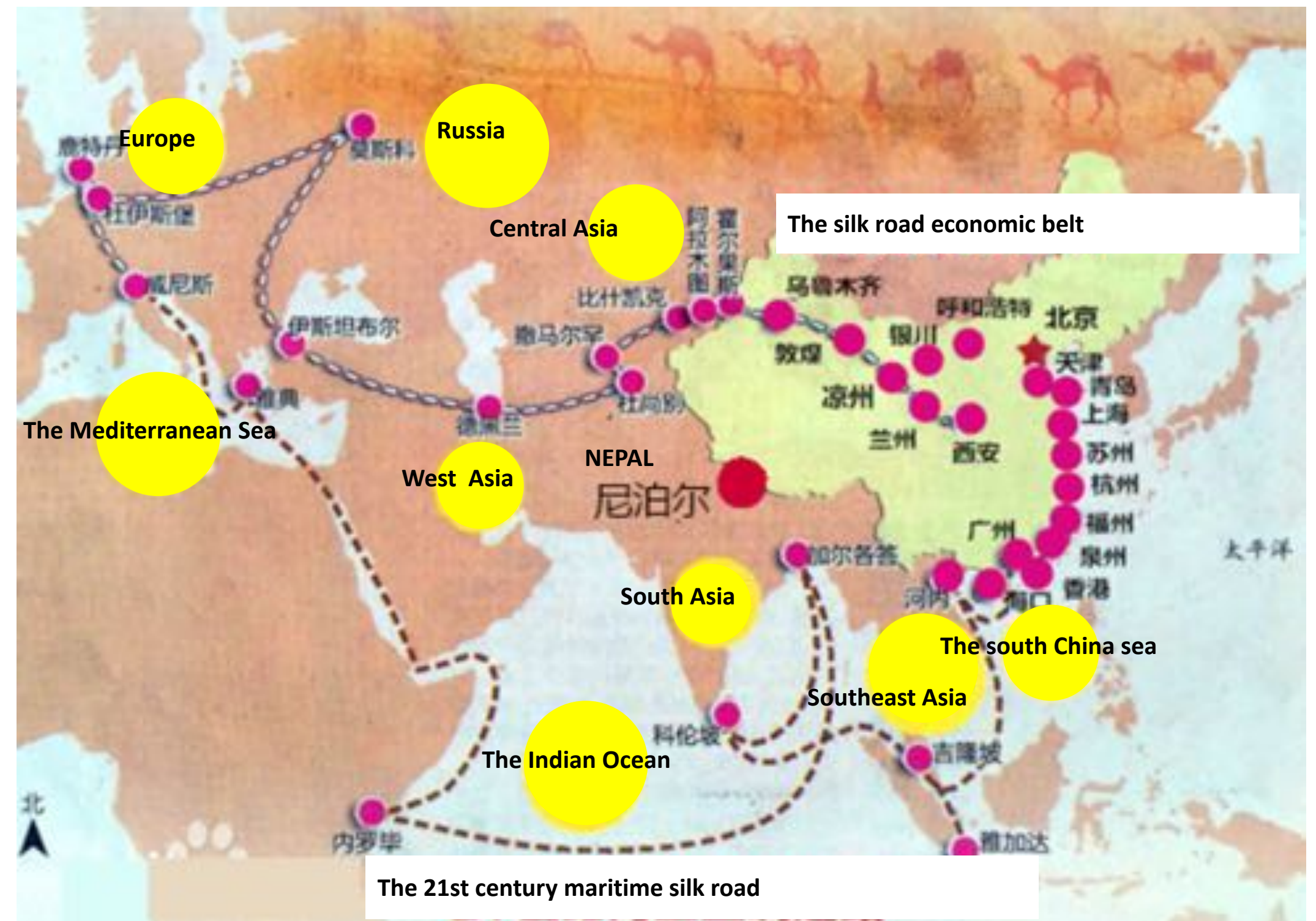
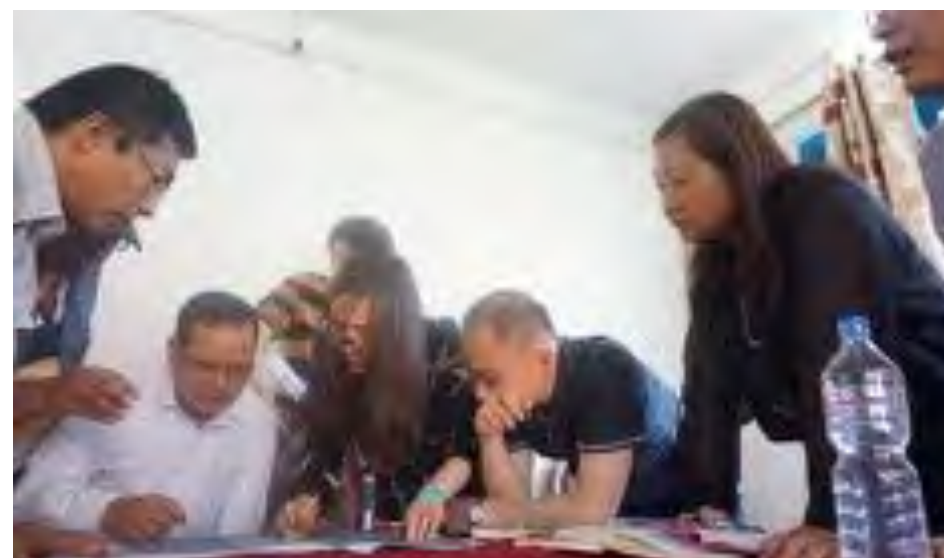
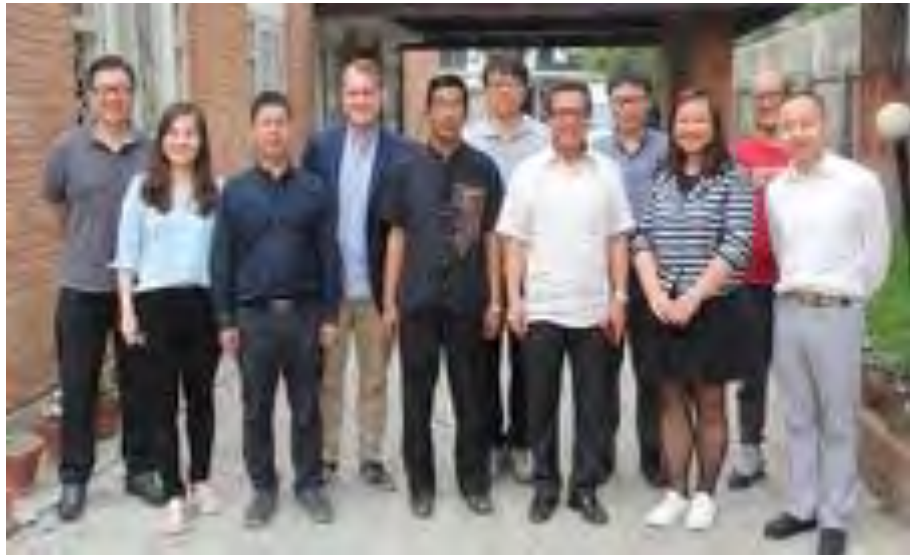


Figure "One Belt And One Road "strategic route



# Working Background

- With the invitation of UN-HABITAT, Our team spent one and a half year to do this job





# Working Background

- With the invitation of UN-HABITAT, we team spent one and a half year to do this job





# Contents



**PART 1**  
**BIDUR IMPRESSION**

**PART 2**  
**CHARACTERISTICS**

**PART 3**  
**VISION AND POSITIONING**

**PART 4**  
**DEVELOPMENT STRATEGY**

**PART 5**  
**IMPLEMENTATION POLICY**





**Administrative Overview**

**Population**

**Economic**

# 1 BIDUR IMPRESSION

A scenic view of a suspension bridge over a river in a mountainous area. The bridge is made of dark wood and is supported by several tall, thin towers. The river is clear and blue, flowing through a valley with green hills and mountains in the background. The sky is blue with some white clouds. The text '1 BIDUR IMPRESSION' is overlaid on the right side of the image.



# 01Administrative Overview

## 行政区划

Bidur is in the **middle of Nepal** and located about **69 km northwest of the Kathmandu Valley**, east longitude  $85^{\circ} 09'36''$ , latitude  $27^{\circ} 53'24''$ . It is the capital city of Nuwakot.



Fig. Nuwackett's location in Nepal

Fig. BIDUR's location in Nuwackett



# 01Administrative Overview

## 行政区划

Bidur' s present administrative area is showing "1+5" pattern. "1" is **Bidur municipality.** " 5" is **Charghare, Tupche, Gerkuh, Kalyanpur VDCs** and some areas of Khadga Bhanjyang.2017, Bidur has **13 districts** with a total area of **130 square kilometers.**



**Fig. BIDUR's administrative area**

( source of the picture : 《Strategic Urban Planning:Bidur municipality & surrounding areas》 )



**Fig. BIDUR's Municipal administrative divisions**

( source of the picture : According to the arrangement of 《Strategic Urban Planning:Bidur municipality & surrounding areas》 )

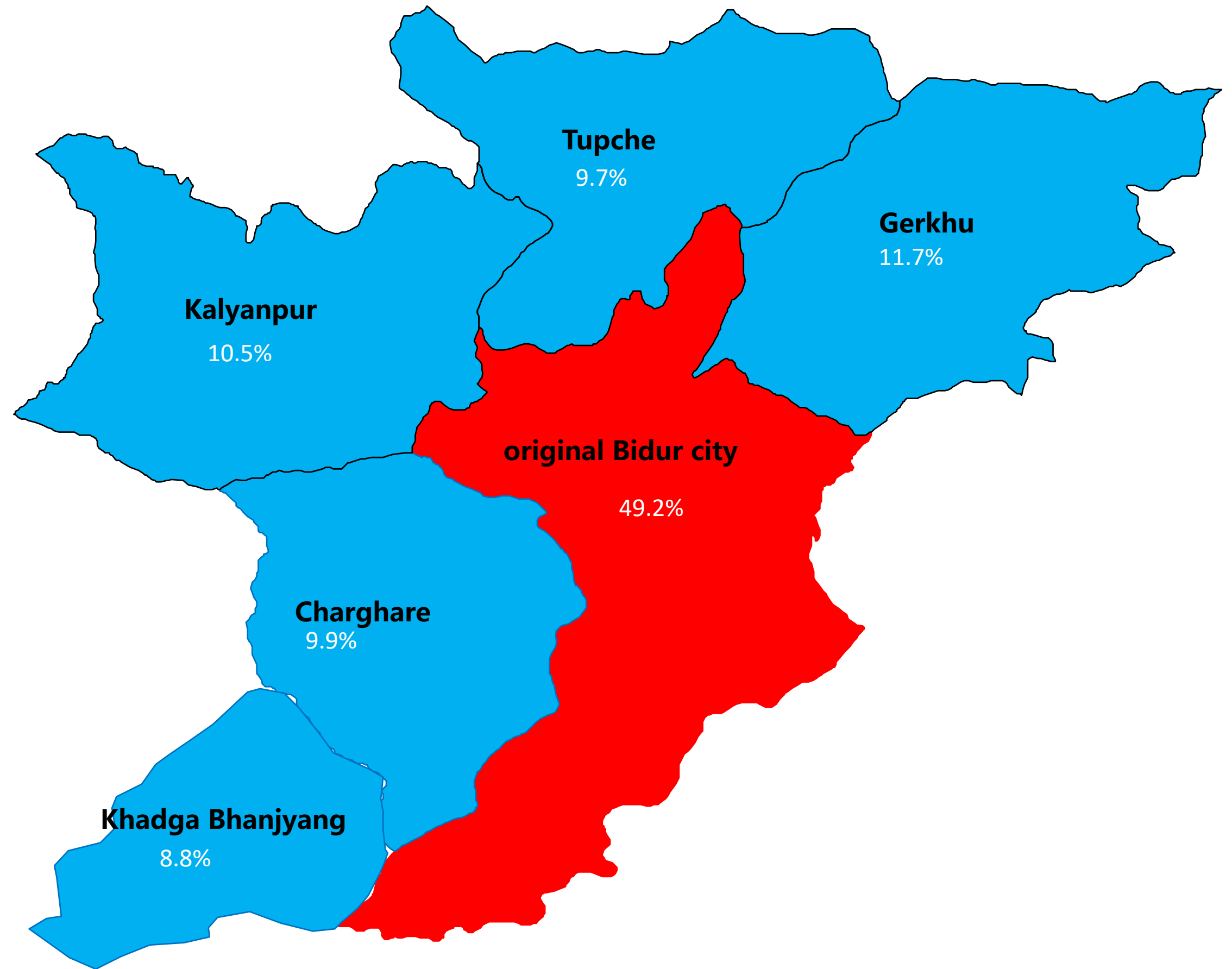


# 02 Population profile

## 人口情况

In 2017, the total population of the Bidur is **54,351** ,  
**The urbanization rate is about 20.14%.**

From **2001 to 2011**, the total population of Bidur Municipality increased from **21,193** to **26,750**, with a growth rate of 5557 (an average annual growth of 555.7).



**Fig. The proportion of population spatial distribution in each district of Bidur**

**Tab. the census and statistics of Bidur Of 2017**

Administrative region name	Population quantity ( Number )
Bidur Municipality	26750
Charghare	5419
Kalyanpur	5722
Tupche	5286
Gerkhu	6382
Khadag Bhanjyang	4792(Region's population 6166)



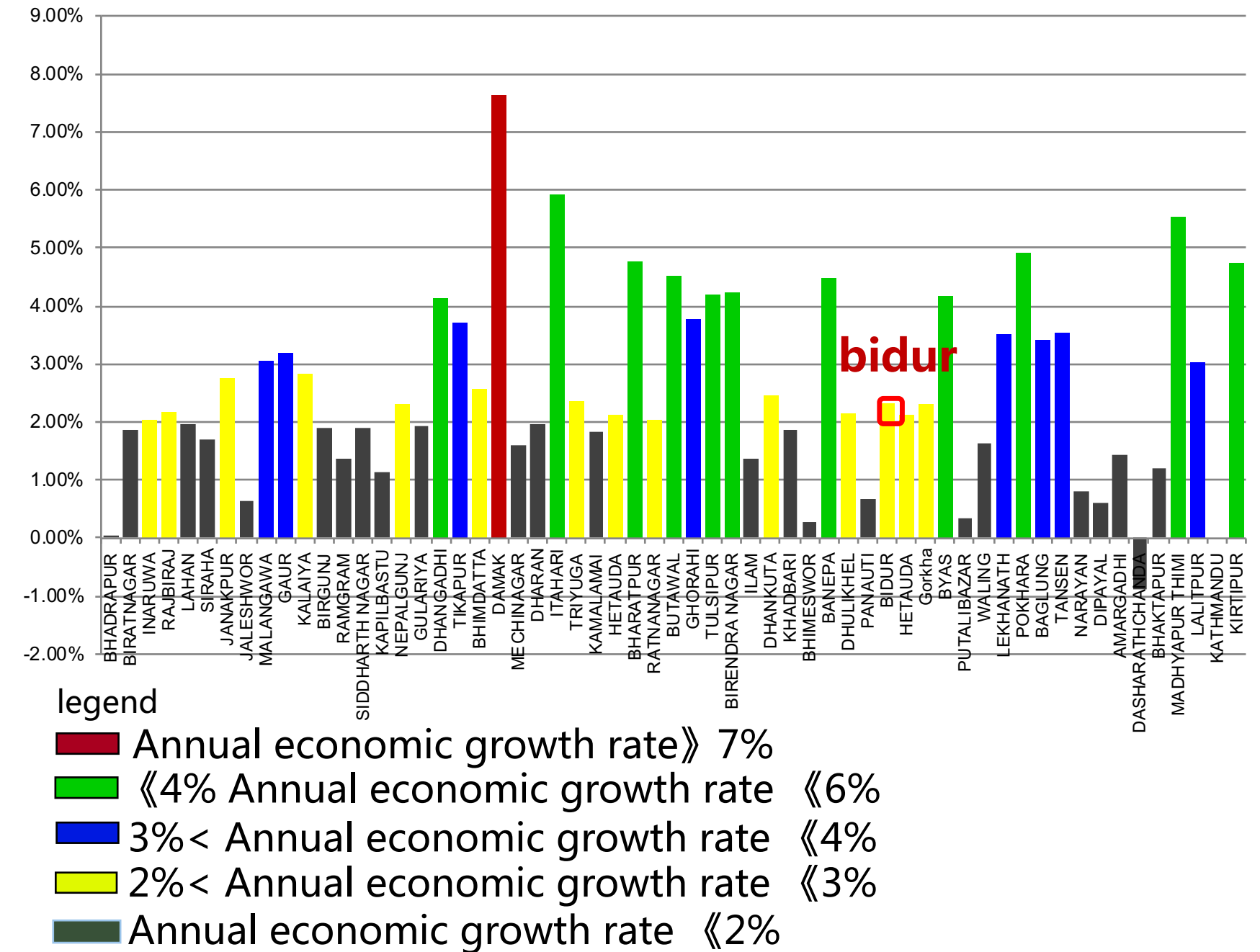
# 03 Economic Profile

## 经济发展

According to the annual economic growth rate of the cities of Nepal, **the average annual economic growth rate of Bidur is about 2%**, the economic development is **below the middle level of the country**.

According to the "2005/2006 Economic Survey Data" shows that, from the income level, **Bidur agricultural and non-agricultural income ratio is 21:79**, non-agricultural income is much higher than agricultural income. The average daily income of both agricultural and non-agricultural households in **Bidur is Rs. 164 and Rs. 390**, which is well below the **national average of Rs. 328 and Rs. 692**.

Tab. Annual economic growth rates in the cities of Nepal





**CULTURE**

**ECOLOGY**

**LANDSCAPE**

# 2 Characteristics





# 01CULTURE

## Historical Development

历史沿革



Fig. Bidur's Historical evolution



## 01CULTURE

- Bidur have a lot of historical buildings, yet the value has not been fully developed.  
拥有丰富的历史建筑，但是未发挥其价值



Fig. Nuwakot palace



Fig. Sattaleduba square



## 02 ECOLOGY

- the mountains and rivers of the city formed "two rivers and three mountains" urban frameworks.

山水格局造就“两河三山”城市骨架



Fig. Landscape features





## 02 ECOLOGY

- People live along the river, forming urban settlements.

人们沿河而居，形成了城市聚落

The main urban area of Bidur are formed along the **Pasang Lhaamu highway**.



Fig. Aerial view of Bidur



## 03LANDSCAPE

- Modern and traditional space interweave, old and new buildings blend

现代和传统空间交织，新旧建筑交融



Fig. Bidur commercial street



Fig. Bidur street



Fig. Bidur village aerial view



Fig. Bidur residential area



Fig. Bidur urban district aerial view



## 03LANDSCAPE

- Public space layout with religious characteristics  
留存宗教特色的公共空间布局

Mainly include **the important temples, marriage monument and featured public site facilities (the tree, the well and the pond)** and so on.



Figure Special landscape—Banyan tree



Figure Marriage monument



Figure Characteristic public area - well



# 01 How to protect historical and cultural resources and understand cultural values in the process of urbanization

如何在城镇化过程中保护历史文化资源，认识文化价值



Fig.The statue of tubhagwati



Fig. Nuwakot palace



Fig. Nuwakot ecclesiastical building





# 02

## How to use the characteristic resources to improve the vitality of the city

### 如何利用城市特色资源，提高城市的活力

The present situation in Bidur is **mainly based on agricultural** primary production, and **industry** manufacture and **service industries** have been **lagged behind**. **Agriculture** also has been **slow down** due to lacking of mountain irrigation facilities and necessary production technology.



Fig. Agricultural space of Bidur



# 03

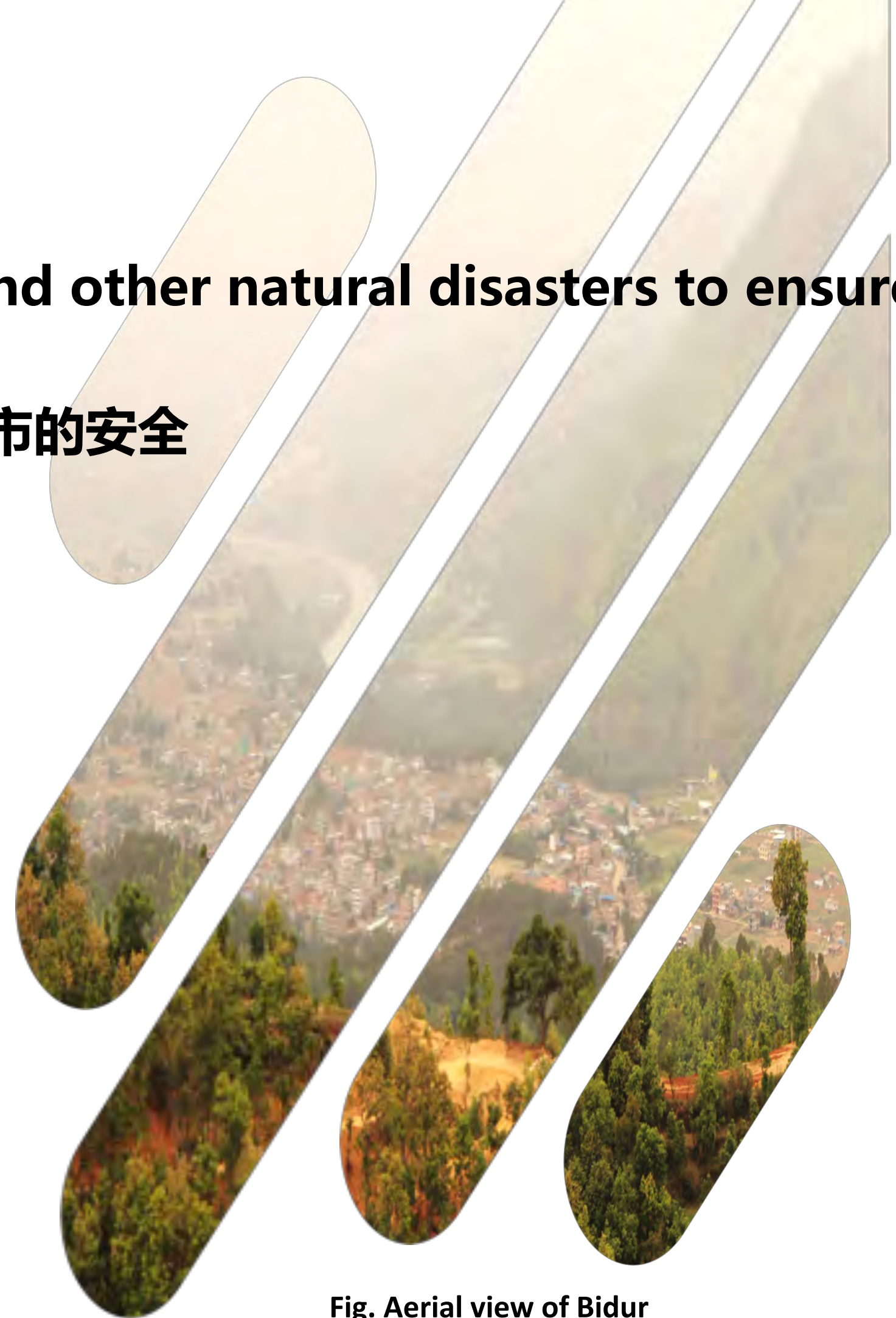
**How to resist the earthquake, flood and other natural disasters to ensure the city safety .**

**如何抵禦地震洪水等自然災害危害，保障城市的安全**

70% of the land in bidu city is over 600 meters in elevation. Most of the area is not suitable for the urban construction in the city.



**Fig.Flood**



**Fig. Aerial view of Bidur**



# 3 Vision and Positioning





**2 living in  
the natural environment**  
生态安全的家园

**1 Prosperous  
And Vibrant City**  
繁华活力的城市

**3 Equal and Shared Services**  
平等共享的服务

**4 Harmonious and  
Inclusive Atmosphere**  
和谐包容的氛围





PART3-Vision and Positioning  
**Value Orientation**  
价值导向

**弹性集群**  
Elastic cluster

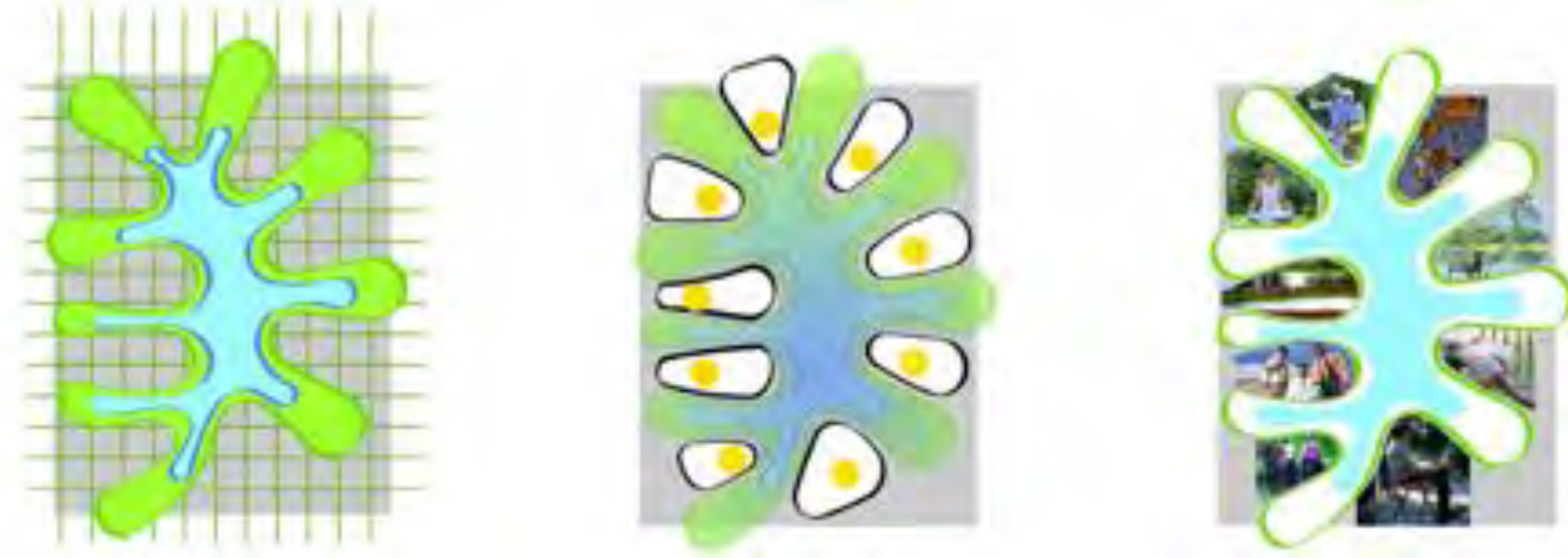


Figure Schematic diagram of the concept of elastic clusters

**有机生长**  
Organic growth



Figure Schematic diagram of organic growth model

**新旧共生**  
Coexistence of old and new city areas

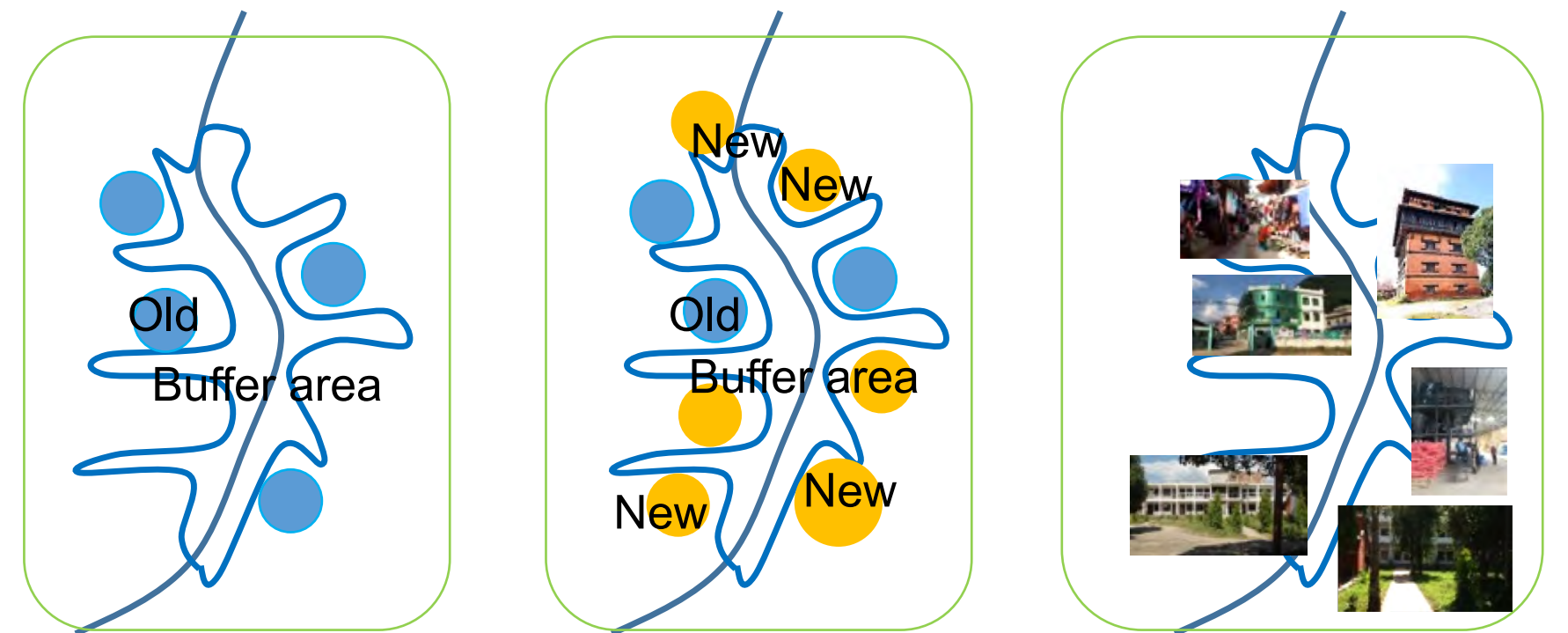


Figure Schematic diagram of the joint thriving of old and new city areas

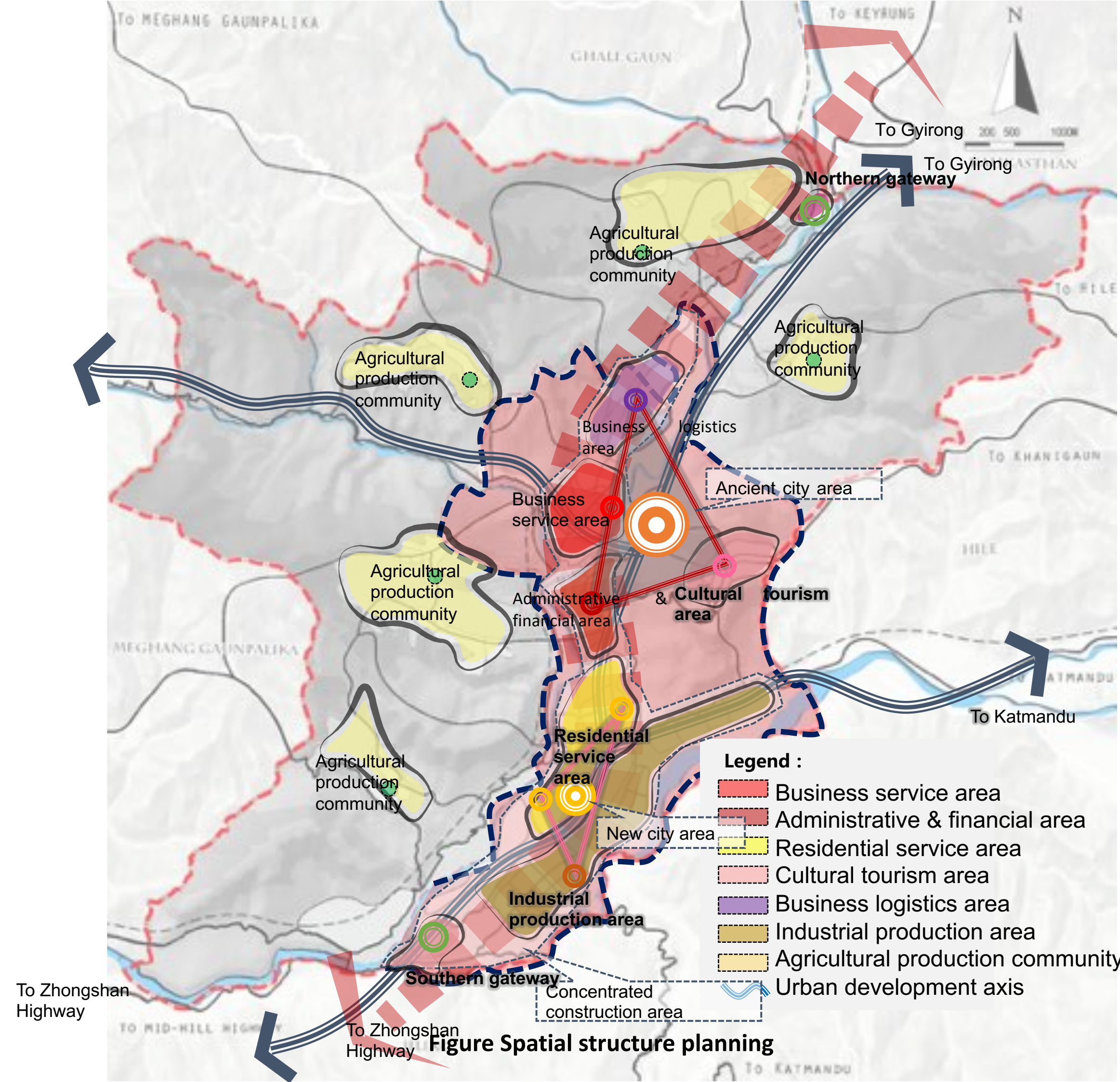


# Spatial Layout Planning

## ■ Spatial Structure 空间结构

"CCLRV" area + "large-scale agricultural community" in the mountains•

"network of one belt, double T expansion, two zones, seven sub-area and five communities"





# Spatial Layout Planning

## Land use Layout 用地布局

Legend

- Administration office area
- Living area
- Village agglomeration area
- Business area
- Logistics functional area
- Industrial area
- Historical and cultural area
- Special management area
- Public infrastructure area
- Public service facility area
- Ecologically maintained and cultivated woodland
- Mountain forest land
- Ecological restoration valley
- Farmland on the flat land
- Mountainous terrace
- Reserved zone for industry development
- Reserved land for development
- Reserved railway corridor
- Water area
- Planning scope
- Bidur Municipal Government

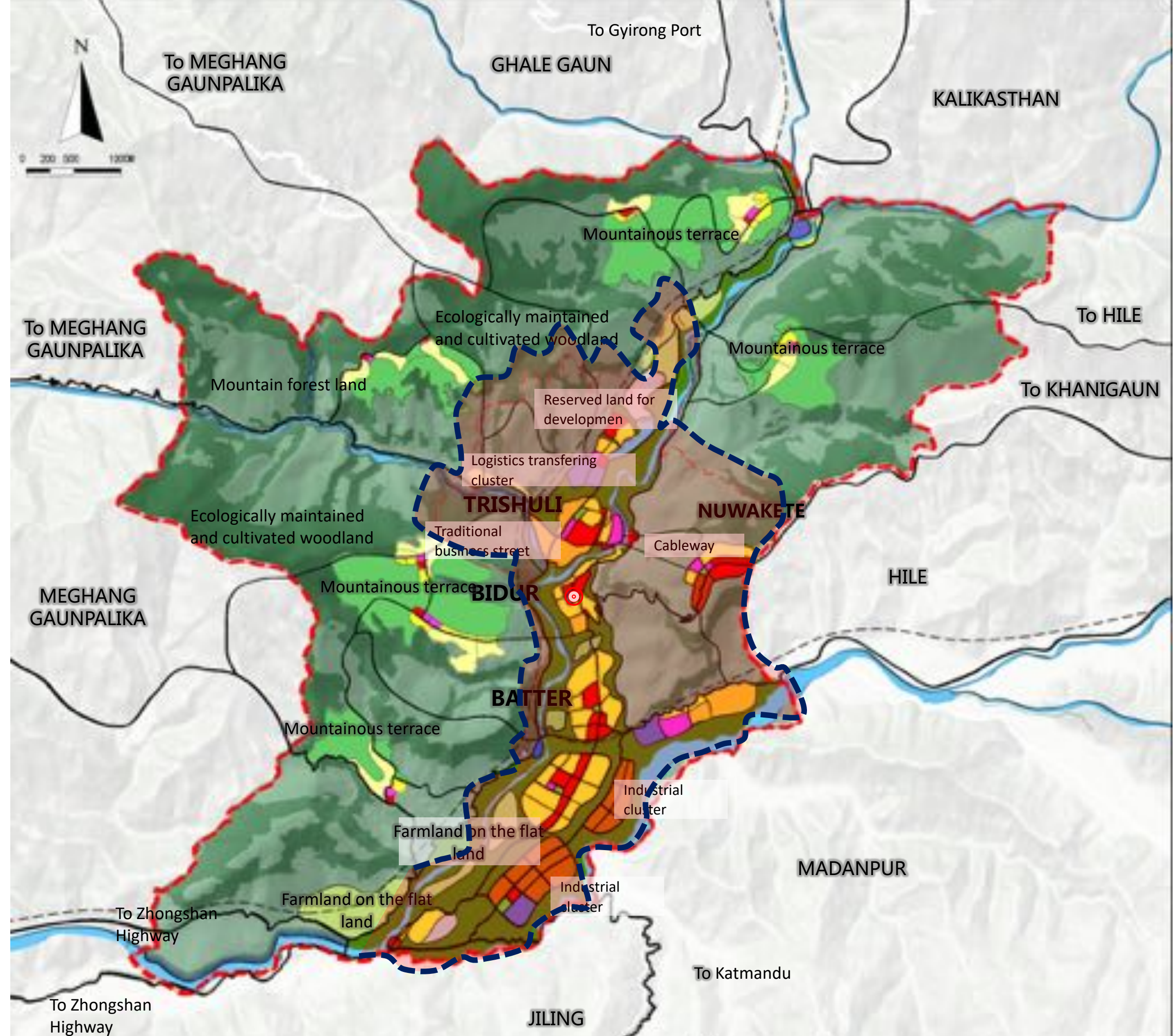


Figure Layout of land use in Bidur





# 4 Development Strategy



Cultural  
Protection  
文化保护

Public  
Service  
公共服务

Culture  
Ecotourism  
生态旅游

Urban  
design  
城市设计

A

B

C

D

保护 —— 营造

Protection —— Construction



# 01 Culture protection

## ■ Building up classified and level-by-level culture protection system

### 历史文化资源分级保护

Table Nepalese historical and cultural resources evaluation and grading

Grading	Contents	Connotation and value
Important historical and cultural architectural complex	The palace historical and cultural architectural complex	The imperial palaces of Nepal in the ancient times, includes the palace, bedroom and other buildings
Traditional business and trade streets	TUISULI traditional business and trade street	The terrace streets having the TUISULI historical and traditional business and trade functions
	Religious culture streets in south of the city	Religious living area at entry to the southern part of Bidur, including the religious temple and religious cultural streets with historical and cultural buildings
Important historical and cultural facilities	Tibetan Empire - Nepal Marriage Monument	A monument in memory of the marriage between the Tibetan Empire and Nepal
	Facilities of BATTER Center	The important historical facilities like the tree, well, temple and the site
	Hindu temple, and other temples	Religious culture of Nepalese characteristics and important scenic spots (Trishuli Ram temple, Battar Ram temple, Pancha Kanya, Barahi temple, Bandevi, Trishuli Krishna temple, Battar Krishna temple, Kalika temple, Malika temple, Raktakali temple, Laxmi Narayan temple, Trishuli masjid.)

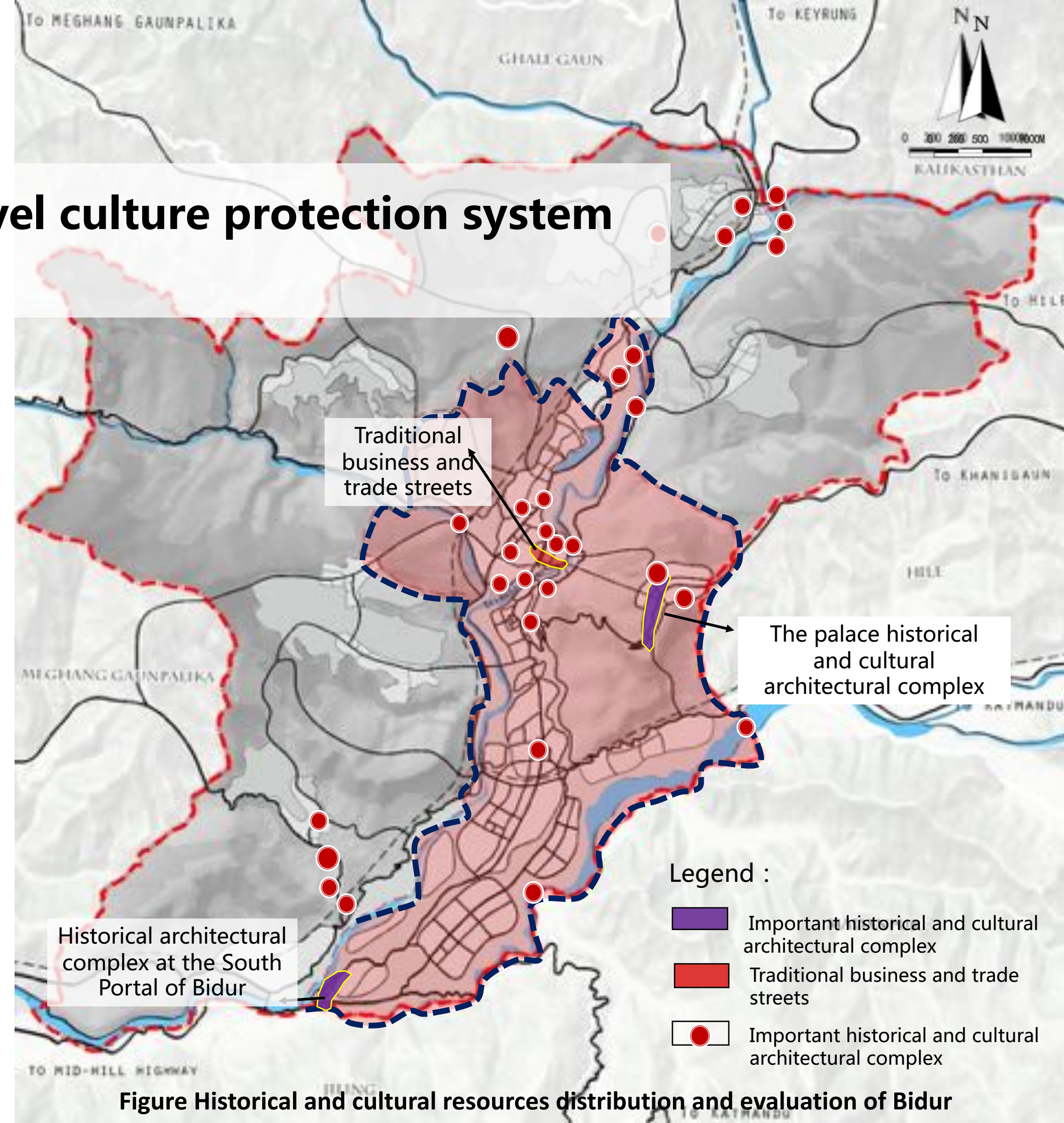


Figure Historical and cultural resources distribution and evaluation of Bidur



# 01 Culture protection

## Delimit “Core zone + controlled zone + Coordination zone” 构建“核心保护区+建设控制地带+风貌协调区”的三级保护区域

### Historical and cultural resources evaluation

Table The palace historical and cultural architectural classification

Grading	Content
<b>Core protection zone</b>	The construction controlled belt reaches to the Mountainous roads in the west and south, the entrance to the school on the mountain top in the north and the mountain valley in the east. In this belt, the construction of residential building and business facilities are strictly controlled, the building height is strictly confined to below four floors and the style of business facilities and residential buildings must be in harmony with that of the palace historical and cultural buildings.
<b>Construction controlled belt</b>	The 100 to 200m scope outside the core protection zone is delimited as the construction controlled belt of historical and cultural architectural complex. The construction controlled belt reaches to the Mountainous roads in the west and south, the entrance to the school on the mountain top in the north and the mountain valley in the east. In this belt, the construction of residential building and business facilities are strictly controlled, the building height is strictly confined to below four floors and the style of business facilities and residential buildings must be in harmony with that of the palace historical and cultural buildings.
<b>Coordination zone:</b>	The coordination zone is the zone within 200m to 500m scope along both sides of the ridge line, including the terrace and slopes in the mountains and the construction area with concentrated hinterland. In this zone, the building height is confined to below four floors and the building style must be in harmony with the palace historical and cultural buildings.

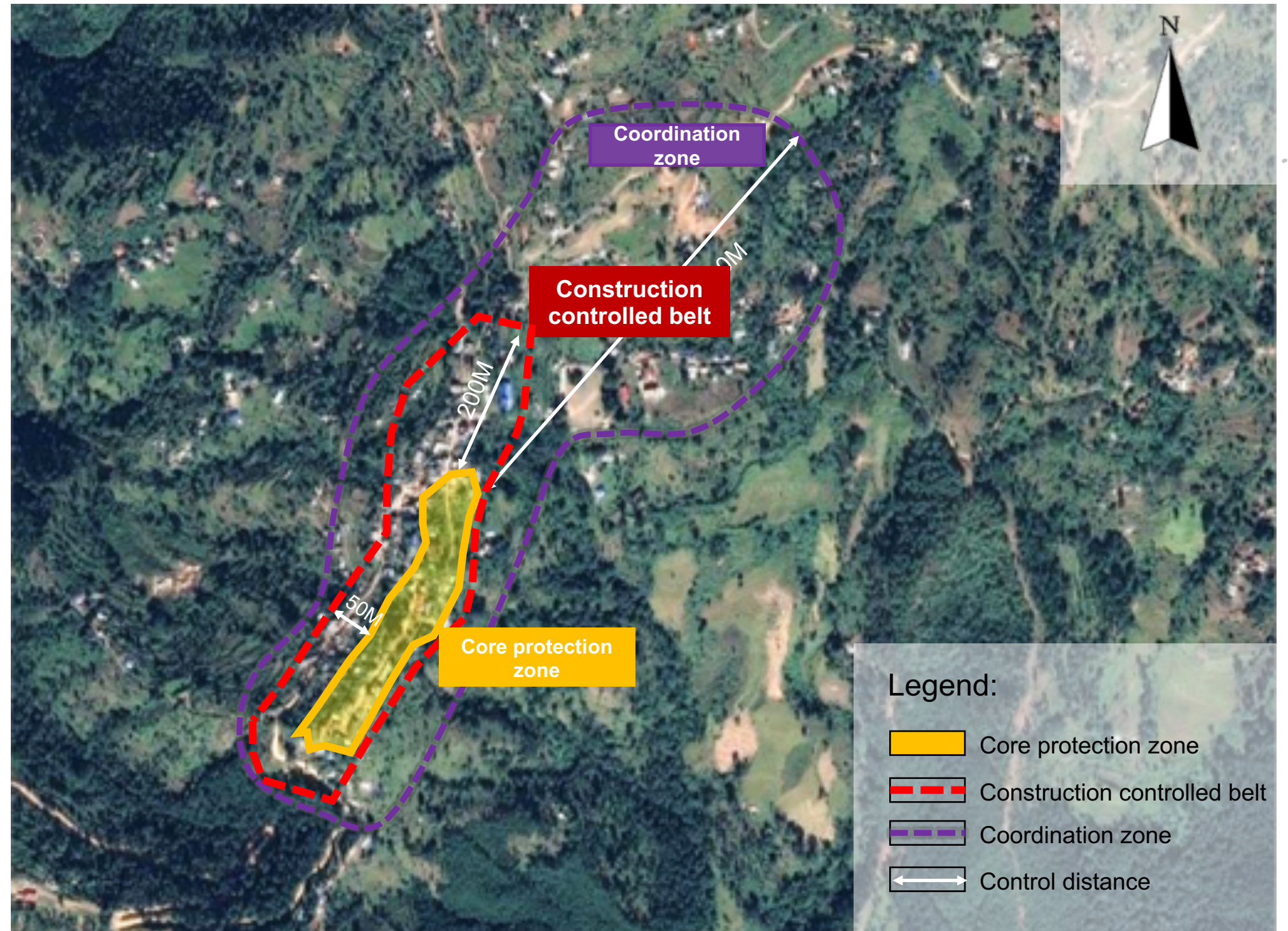


Figure the palace historical and cultural architectural complex protection and control



# 01 Culture protection

## ■ Delimit “Core zone + controlled zone + Coordination zone” 构建“核心保护区+建设控制地带+风貌协调区”的三级保护区域

Table TUISHULI Traditional business and trade streets classification

Grading	Content
<b>Core zone of business and trade streets</b>	The scope of core zone of business and trade streets start from the TUISHULI Bridge in the east and extend to the channel in the west, with business buildings at both sides. In this zone, the comprehensive building governance and improvement will be done and no construction of new buildings is allowed.
<b>The peripheral coordination zone</b>	The 50 to 150m scope outside the core zone of traditional business and trade streets is delimited as the coordination zone. In this zone, it is suggested to confine the building height to be below three floors, the building density should be controlled to a lower value and the style should be in consistent with the original style of the traditional business and trade streets.

### Traditional business and trade street

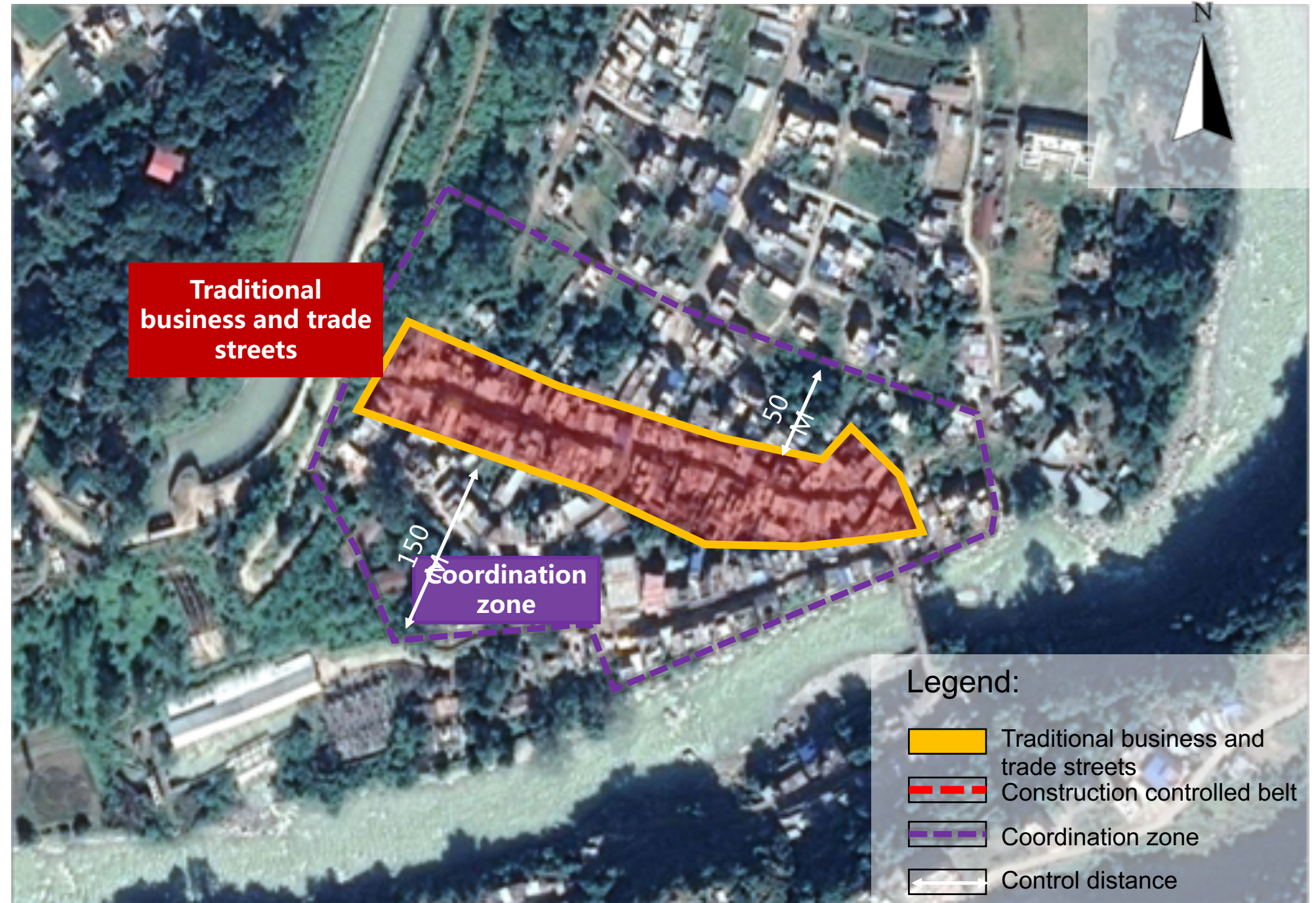


Figure TUISHULI Traditional business and trade streets protection and control



# 01 Culture protection

## ■ Delimit “Core zone + controlled zone + Coordination zone” 构建“核心保护区+建设控制地带+风貌协调区”的三级保护区域

### Religious culture streets in south

Table Religious culture streets in south of the city classification

Grading	Content
<p><b>zone of religious cultural street</b></p>	<p>The core zone of religious cultural streets reaches to the TUISHULI River in the west, the TADI River in the south and 50m away from the main roads in the east and north. The core zone has large Hindu Temples, sites and traditional residential buildings. In this zone, the comprehensive building governance and improvement will be done and no construction of new buildings is allowed to develop it into the southern religious portal of traditional regional features.</p>
<p><b>peripheral coordination zone for protection</b></p>	<p>The 150m scope outside the zone of religious cultural streets is delimited as the coordination zone. In such zone, it is suggested to control the building height to be below three floors, the building density should be controlled to a lower value and the style must be consistent with that of the traditional streets.</p>

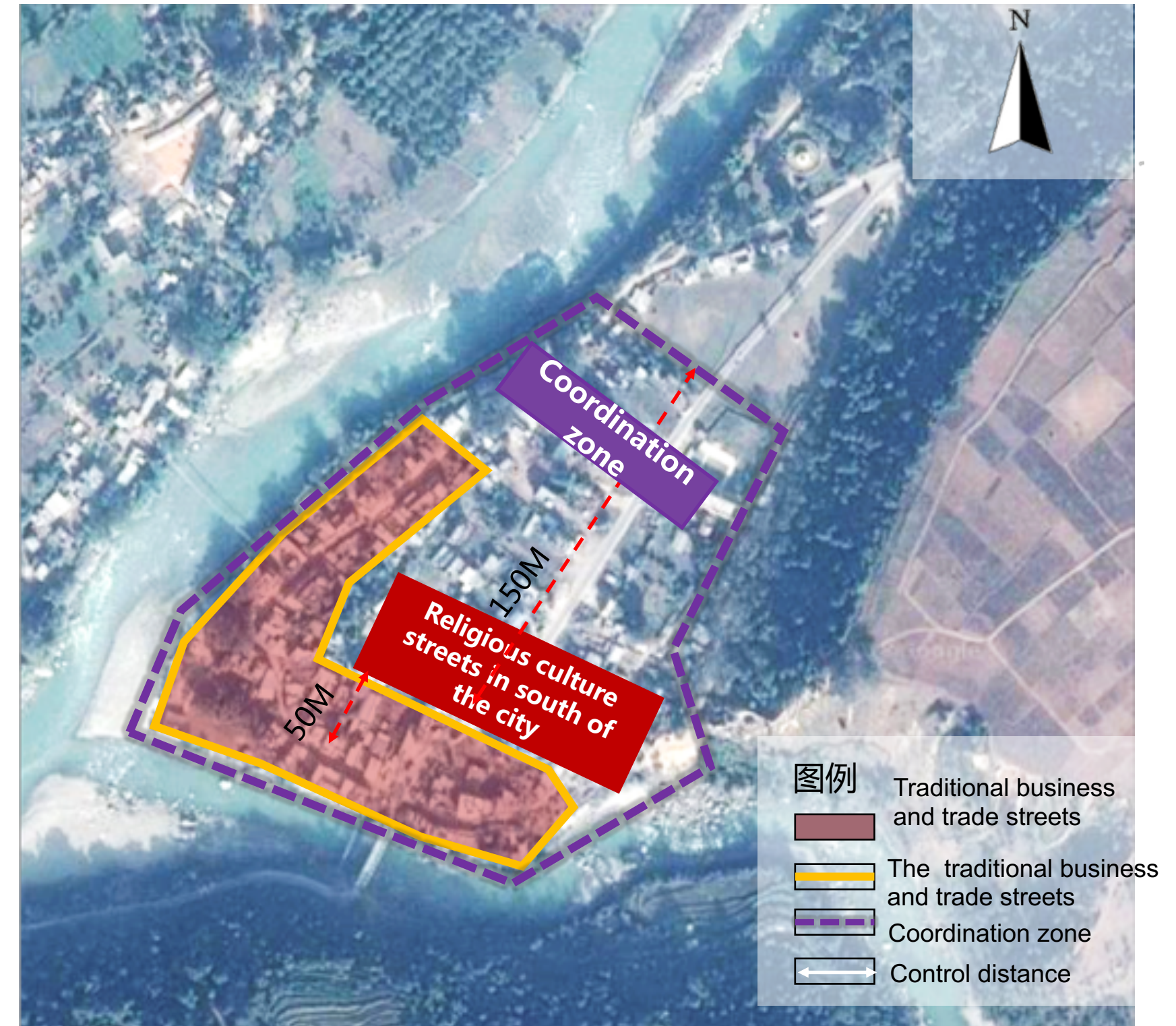


Figure Protection of the religious culture streets in south of the city



# 01 Culture protection

## ■ Intangible Culture Protection 非物质文化遗产资源保护



Tihar



Nepal color painting



Holi



Handicraft of Nepal



Women's Day



Nepal woodcarving

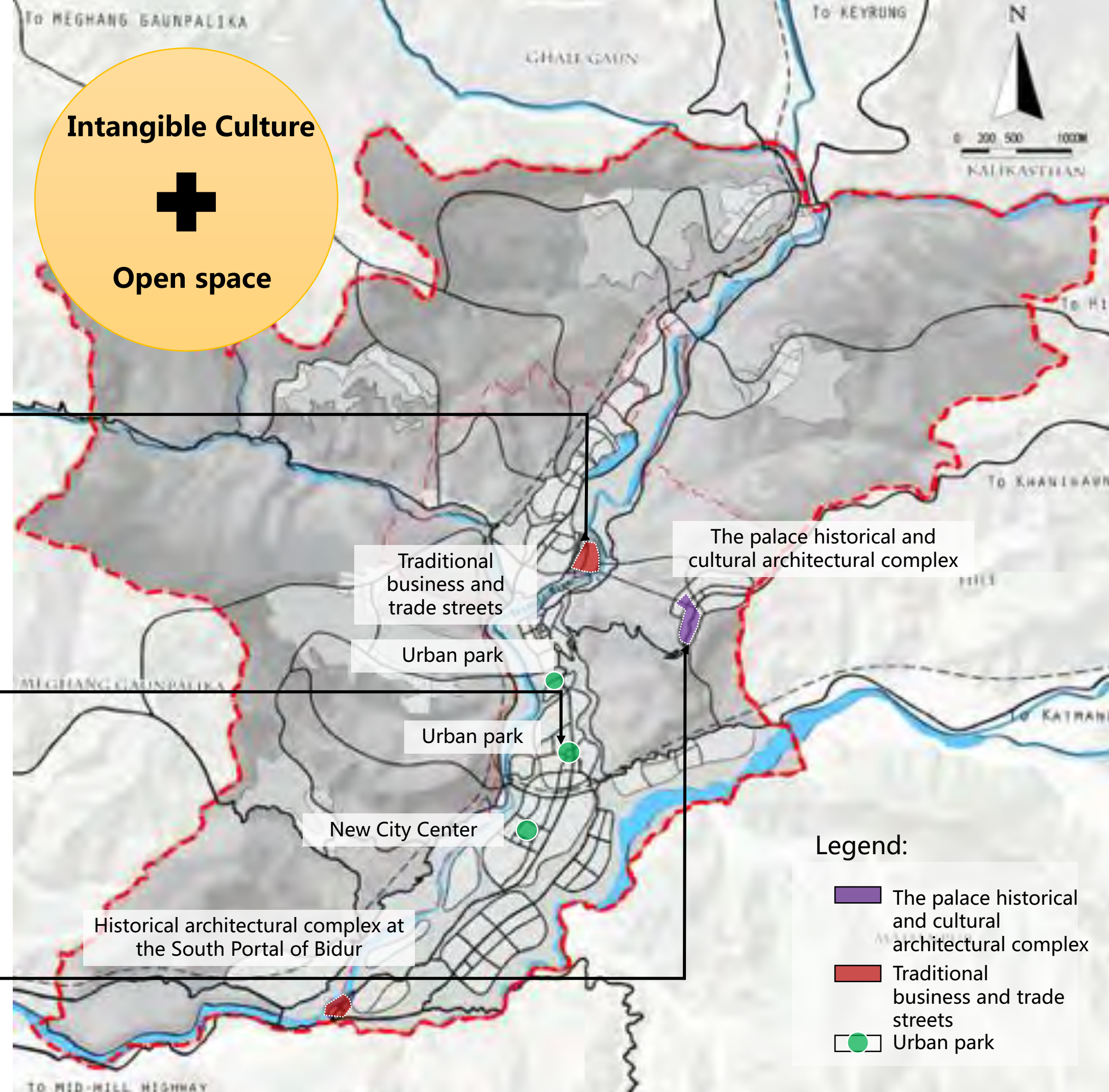


Figure Spatial planning on Nepalese intangible cultural heritage protection and use





**Building an equally shared and easily accessible public service system**  
**建立平等共享，方便易达的公共服务体系**





PART4-Development Strategy  
**02 Public service**

■ **Use of Religion sites**  
**利用宗教场所**

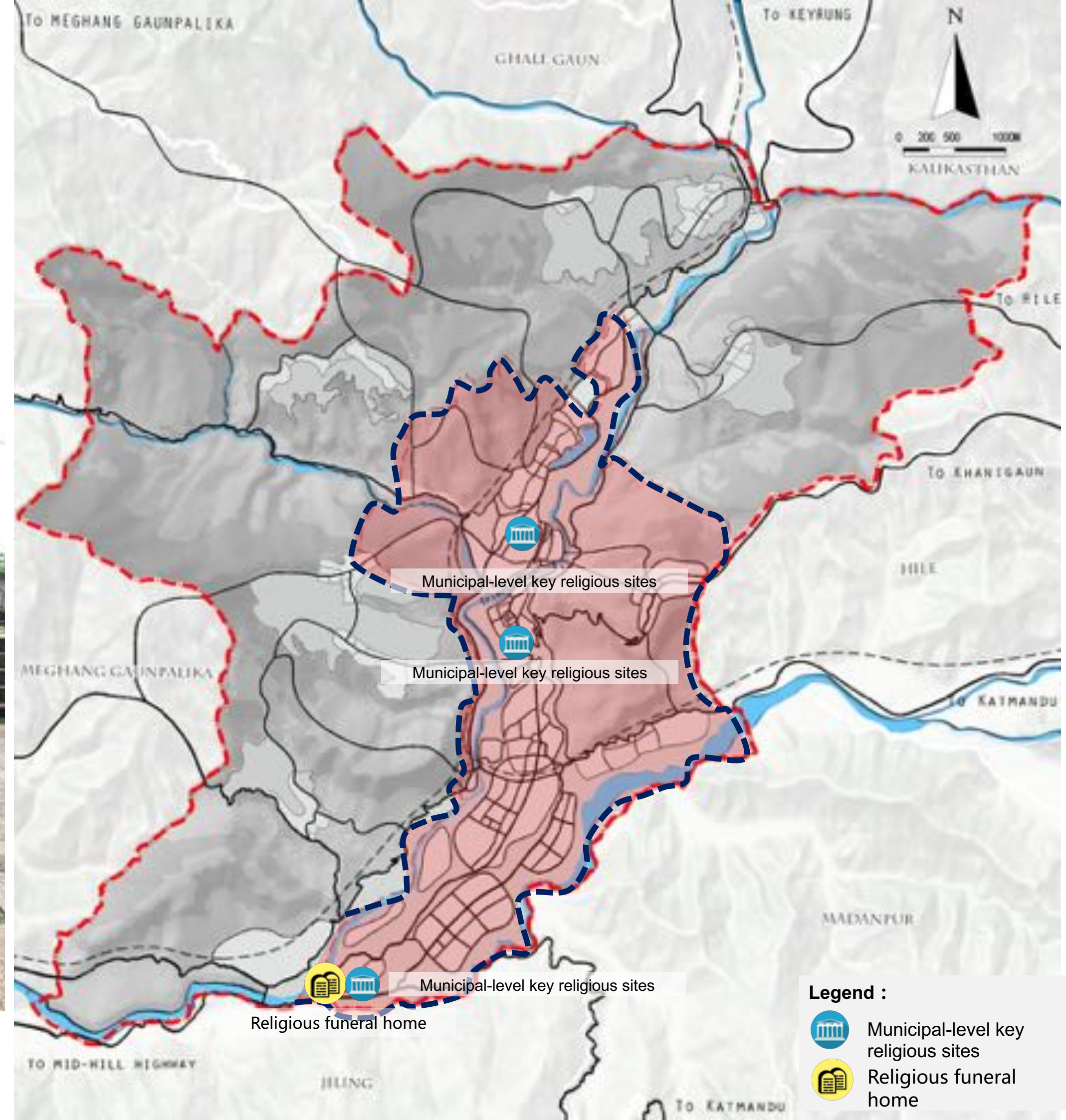


Figure Layout of Municipal-level Religious Facilities of Bidur in 2035



PART4-Development Strategy  
**02Public service**

- Integrate modern cultural functions  
融入现代文化设施功能

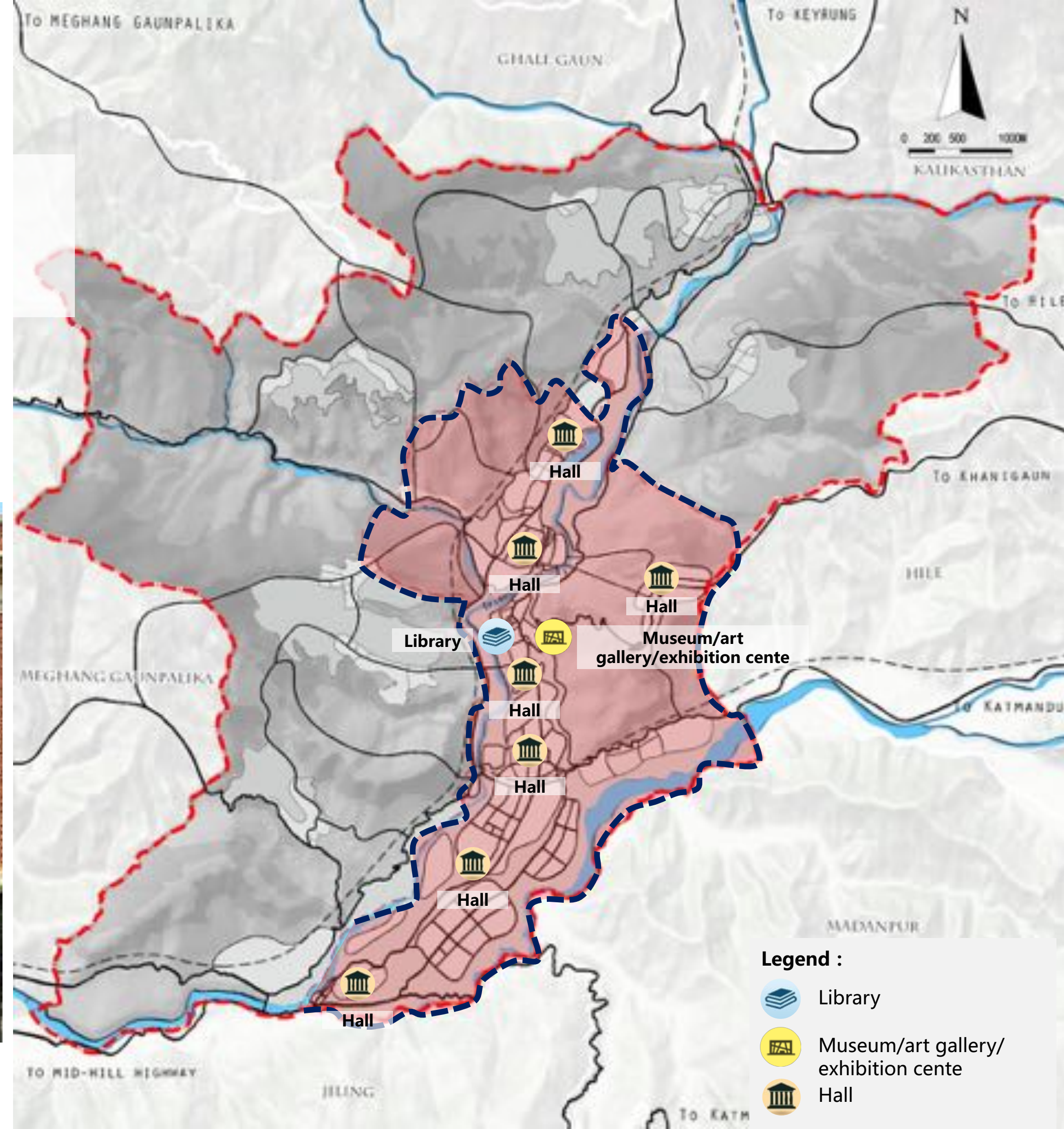


Figure Layout of Municipal-level Cultural Facilities of Bidur in 2035

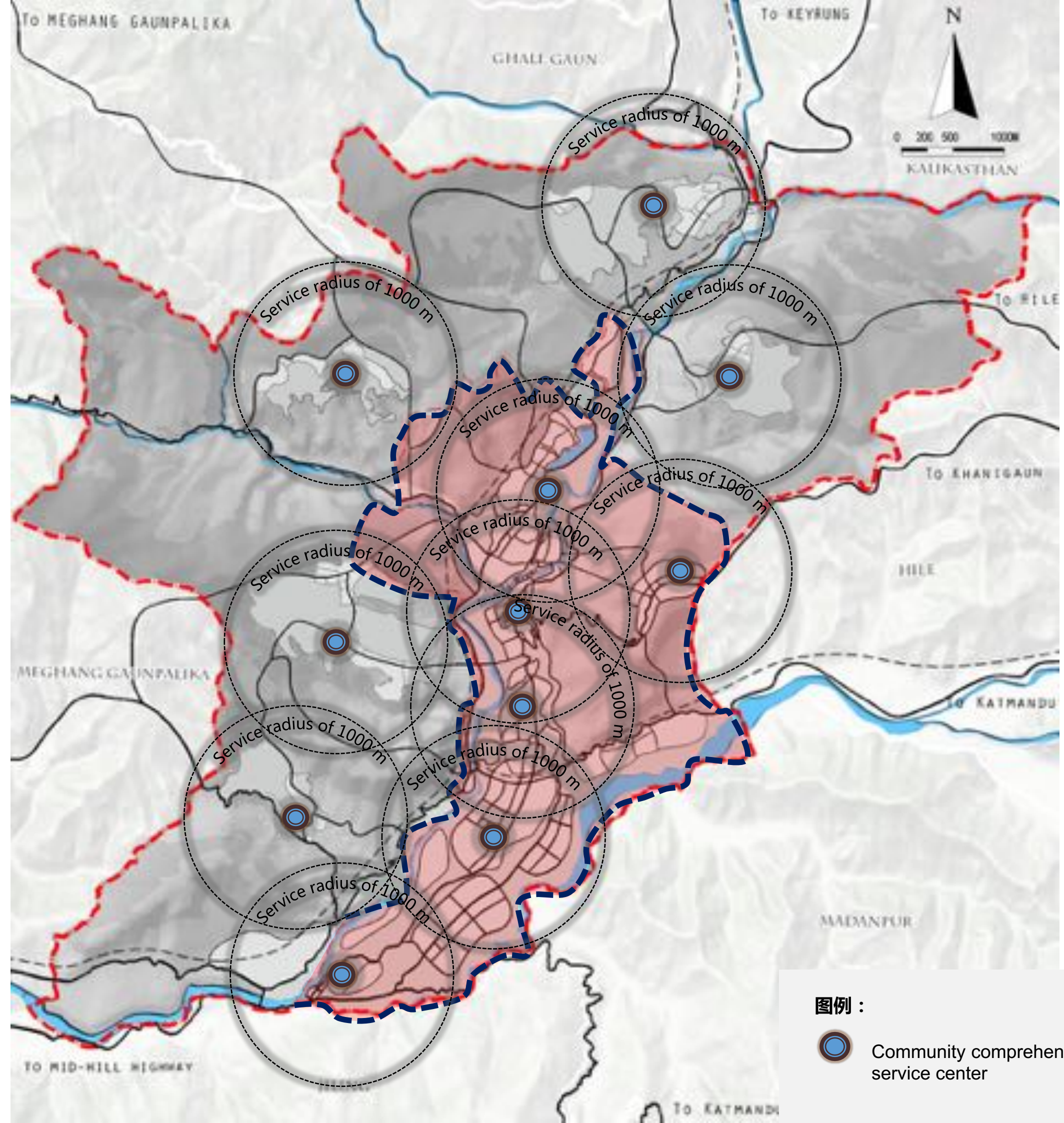


PART4-Development Strategy  
**02 Public service**

■ **Build comprehensive Service Center**  
**打造公共活动中心**



Figure Layout of Community Comprehensive Service Center of Bidur in





## 02 Public service

### ■ Create public Spaces along the river

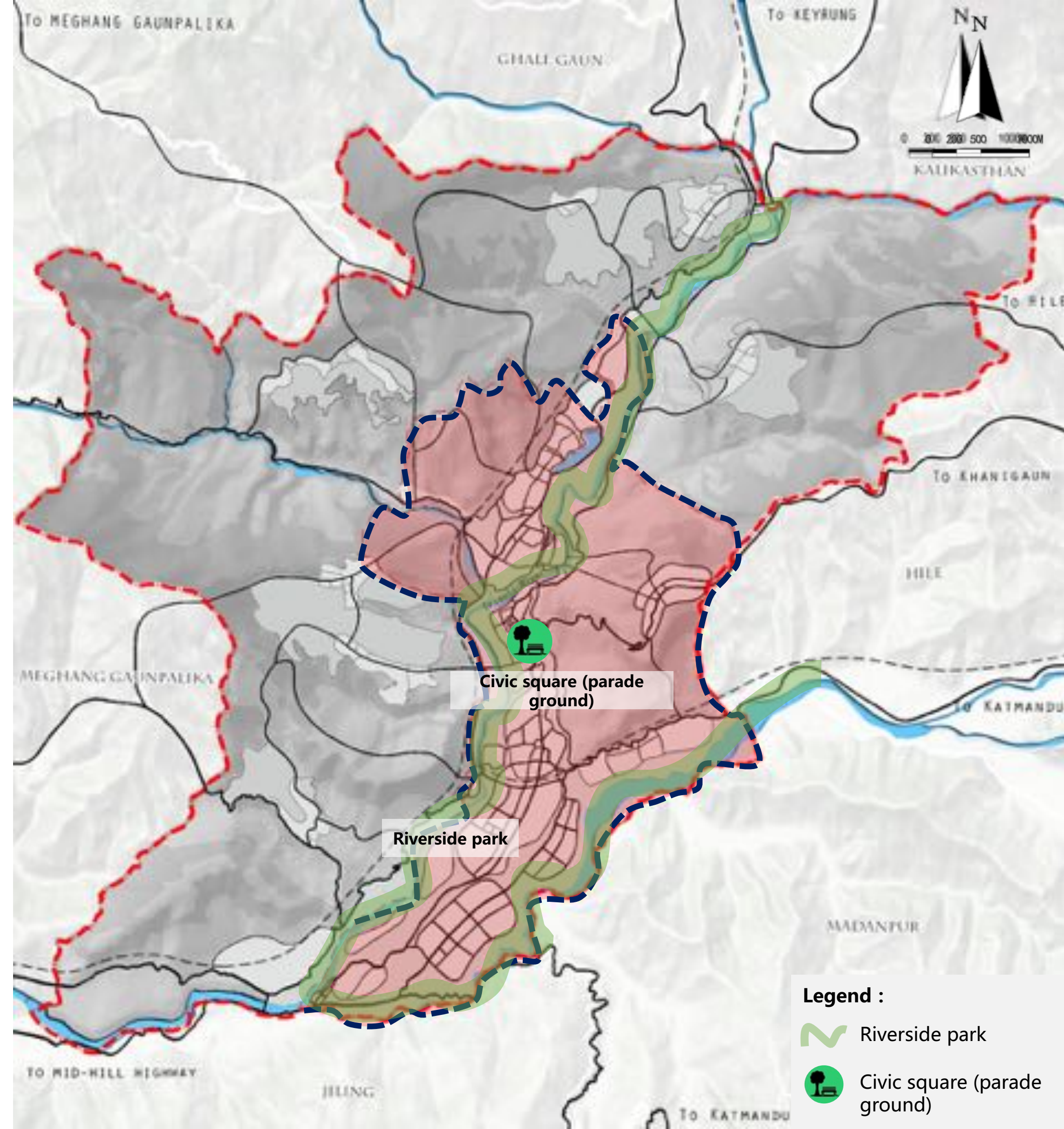
#### 打造滨河公共空间

- 2 riverside parks
- 1 civic square
- 6 community parks
- 100 neighborhood parks

In order to achieve the objective of having plants visible within a walk distance of 15minutes.



Figure Layout of Municipal-level Public Space of Bidur in 2035





A wide-angle landscape photograph showing a person standing in a valley. The foreground is a mix of brown and green vegetation. In the middle ground, there are rolling hills and a small stream. The background features jagged, rocky mountains under a sky with large, white and grey clouds. The overall mood is serene and majestic.

**Developing a Management—Usage Combined and Ordered Tourism System**  
**形成管用结合，游赏有序的旅游体系**



# 03 Culture Ecotourism

## ■ Small Cultural Tour Loop + Classic Ropeway 文化旅游小回环+精品索道”

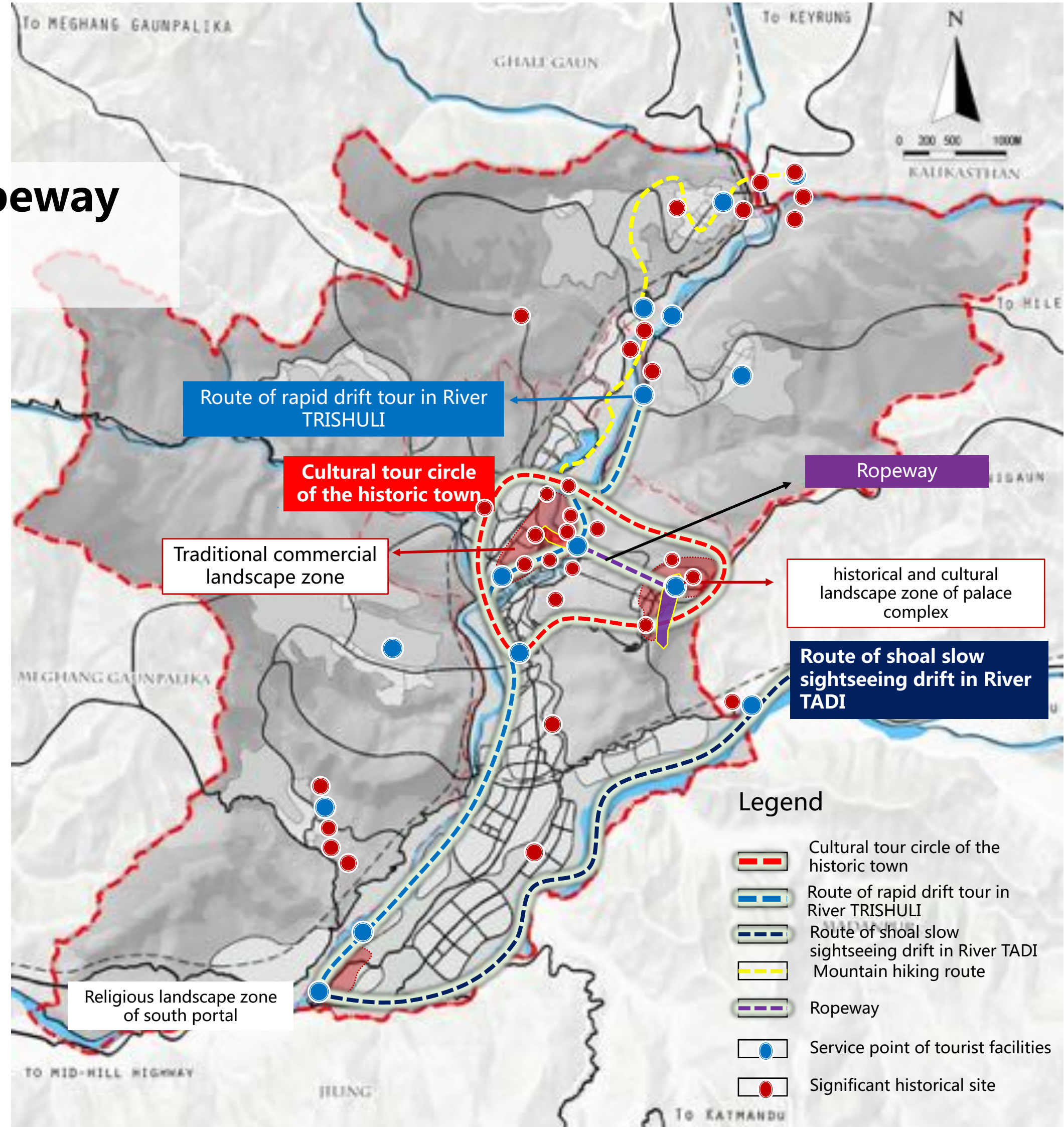


Figure Systematic planning map of ecological and cultural tourism in Bidur



# 03 Culture Ecotourism

## ■ Big Ecotourism Loop + Mountainous roads Adventure

### 生态旅游大回环+探险山林路”

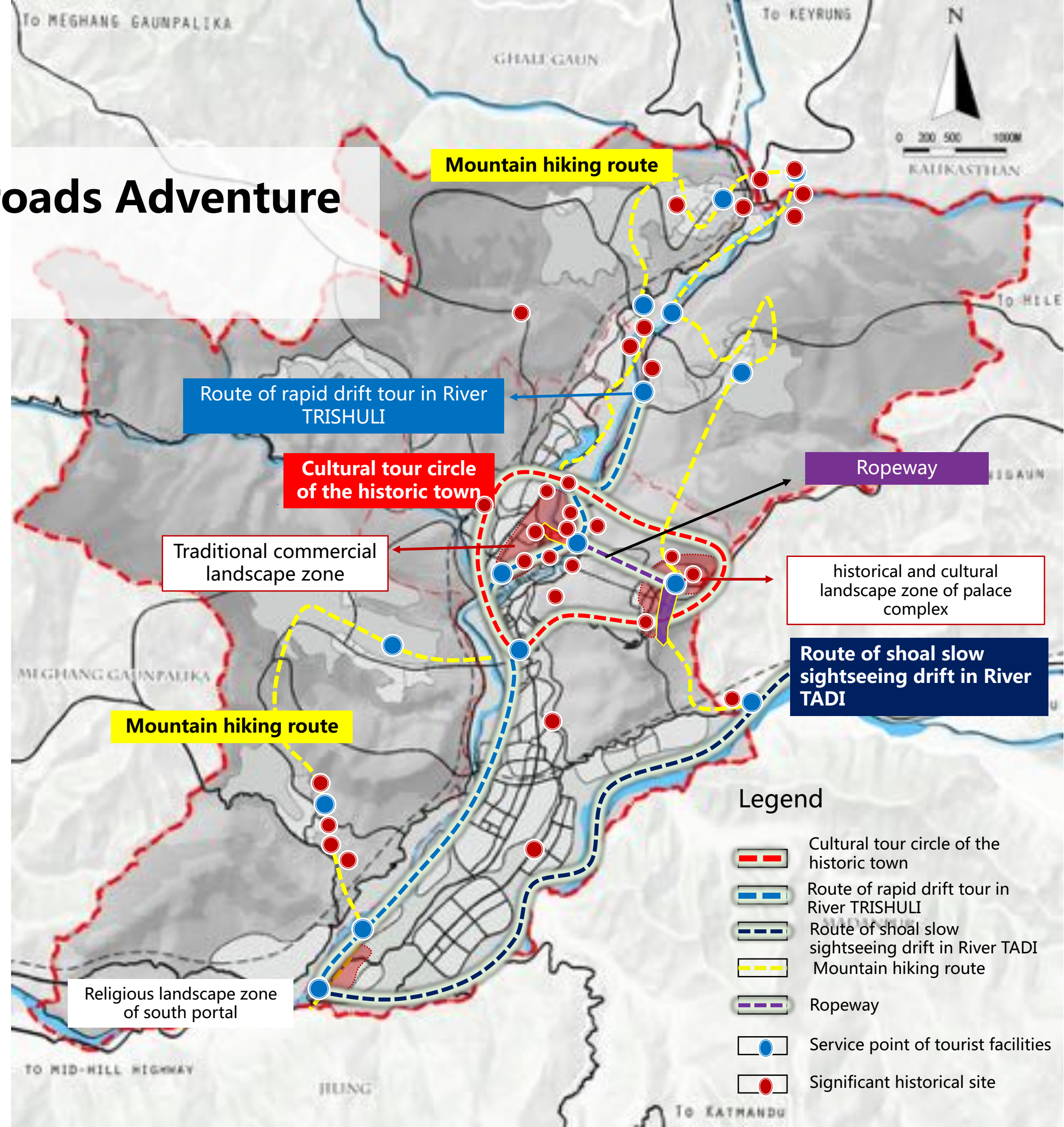


Figure Systematic planning map of ecological and cultural tourism in Bidur



**Forming a distinctive landscape system with both ancient and modern attractions**

**形成古今相映，特色鲜明的景观风貌体系**



■ TRUISHULI traditional trade landscape zone

General Layout



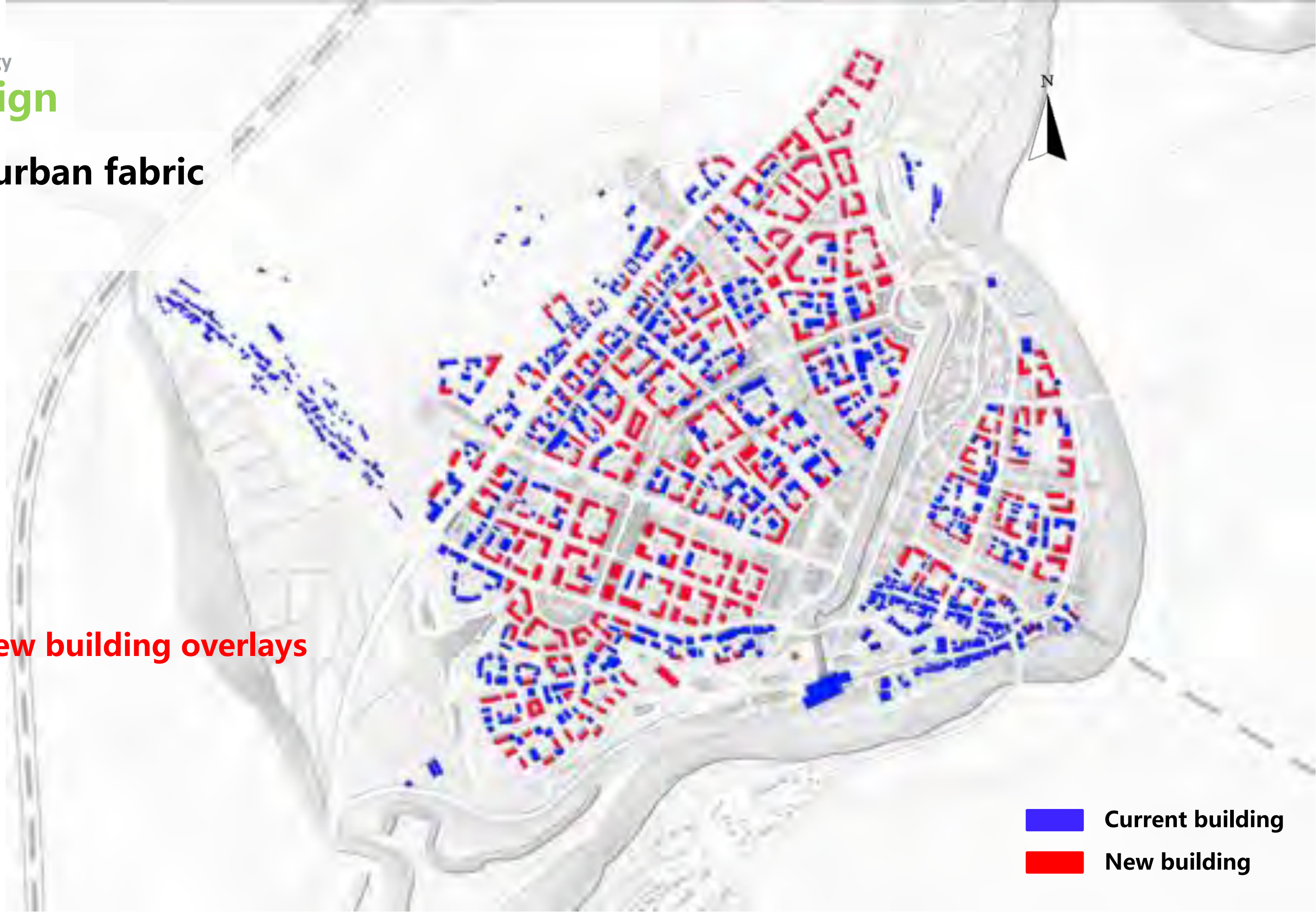
Figure The plan of TRUISHULI traditional commercial landscape zone



## 04 Urban design

- Weave the urban fabric  
织补城市肌理

Current and new building overlays





# 04 Urban design

## ■ Determine the public space access

### 确定公共空间通道

- 7 public landscape nodes ;
- 3 Landscape image node
- 5 Riverside landscape node
- Urban greening rate 35%;
- public space coverage 25%

### Spatial structure plan





## 04 Urban design

- Restore the traditional architectural layout  
恢复传统建筑布局

### Courtyard type traditional architectural layout

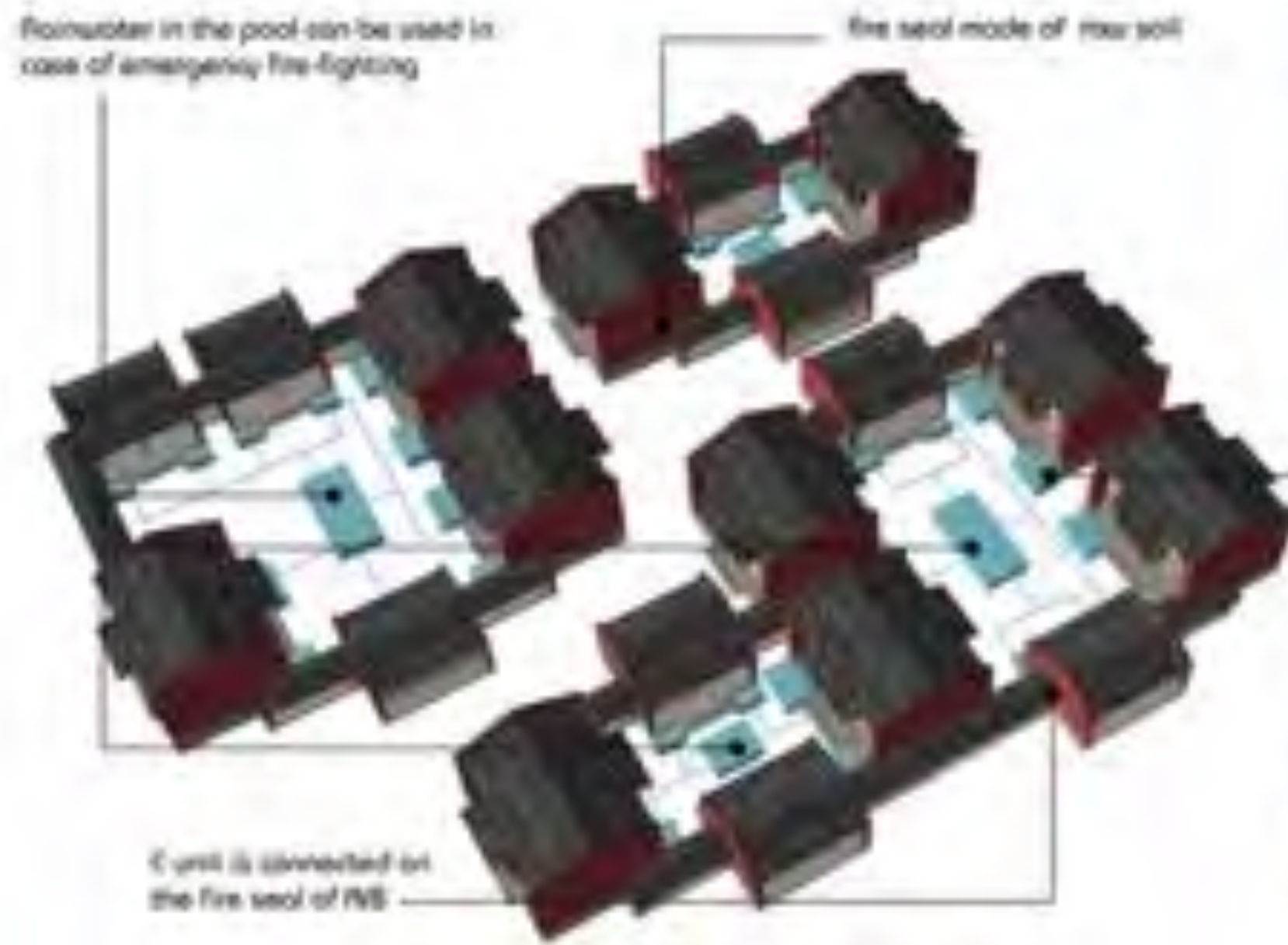


Figure The guidelines of TRISHULI traditional commercial zone



■ **Historic and cultural landscape zone of palace complex**



**General Layout**



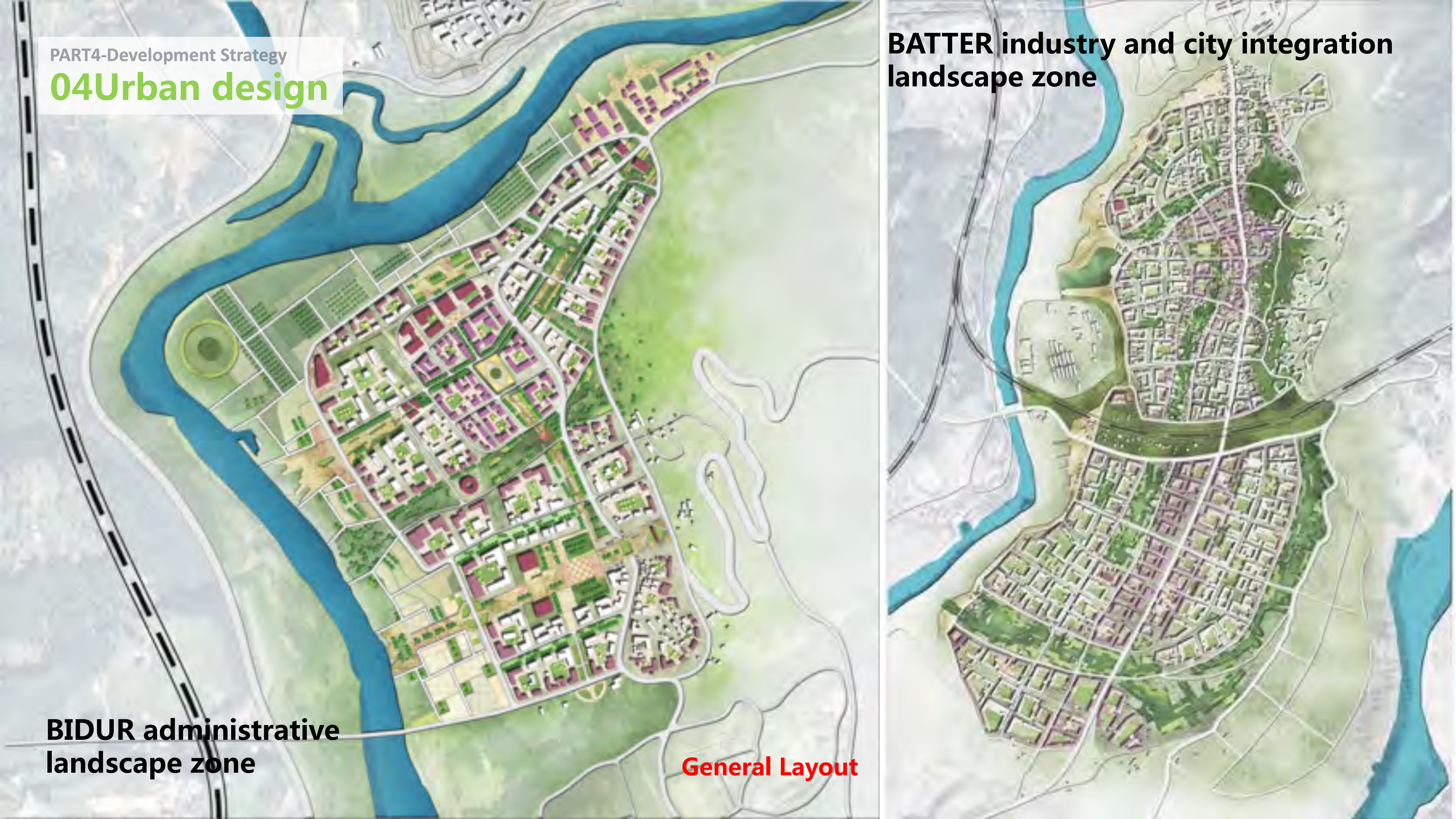
PART4-Development Strategy

# 04 Urban design

**BIDUR administrative  
landscape zone**

**General Layout**

**BATTER industry and city integration  
landscape zone**





A scenic landscape featuring a suspension bridge over a river, with mountains in the background and a large number '5' in the foreground. The bridge has multiple cables and spans across a wide river. The riverbank is rocky and sandy. The background shows lush green mountains under a blue sky with white clouds. The number '5' is large and white with a black outline.

5

# IMPLEMENTATION POLICY



# Highlights of land policy

## ■ Action Plan in Short Term 近期行动计划

Industry cultivation plan——

Service Industry



Figure Tourist route planning map



# Highlights of land policy

■ Mixed development  
混合开发

Commercial facilities + Road broadening



Historical building protection  
+  
Tourist service



Eco-protection + Public open space





# Conclusion

- 1、 Protecting historical resources as principle, explore the city context ,continue the urban pattern**  
以历史保护为基础，挖掘城市文脉，延续城市格局
- 2、 Taking the vitality promotion as point, implant the tourism industry, activate the economy**  
以活力提升为抓手，植入旅游项目，激活城市经济
- 3、 Making improve life style as goal, respect cultural differences, improve the quality**  
以生活改善为目标，尊重文化差异，提高场所品质

**Improve the living environment! Improve life happiness!**

**最终改善人居环境！提升生活幸福感！**



An aerial photograph of a city, likely Bidur, showing a winding river in shades of blue and green. The city is built on a hillside, with a dense cluster of buildings in the center. The surrounding area is lush green with some brown patches, possibly indicating undeveloped land or agricultural fields. The overall scene is bright and clear.

**Bidur will be a vibrant, livable, multicultural and charming city in future.**

**We hope that more and more targets and forces will be put into the underdeveloped and developing countries and make our own contributions to the realization of human equality and common prosperity.**



**WLSP**