



# The Next Normal for Boards' Governance

Webinar: July 15, 2021

10:00 – 10:30 AM CDT

OnBoard | ©2021 Passageways, Inc. Confidential. All rights reserved.



# OnBoard Team Introductions



Jenni Washington | Host

- Enterprise Account Manger
- Joined OnBoard in March 2018
- Advisor to more than 500 Organizations from Implementation throughout Ongoing Partnership



Karen Griffin | Host

- Head of Customer & Product Marketing
- Joined OnBoard in February 2021
- Advocate to 2000+ customers. Leads efforts in product positioning & messaging.



Adam Jividen | Q&A

- Senior Growth Manager
- Joined OnBoard in January 2019
- Works with customers to improve and expand use of OnBoard



Please ask questions at any time using the Q&A Button



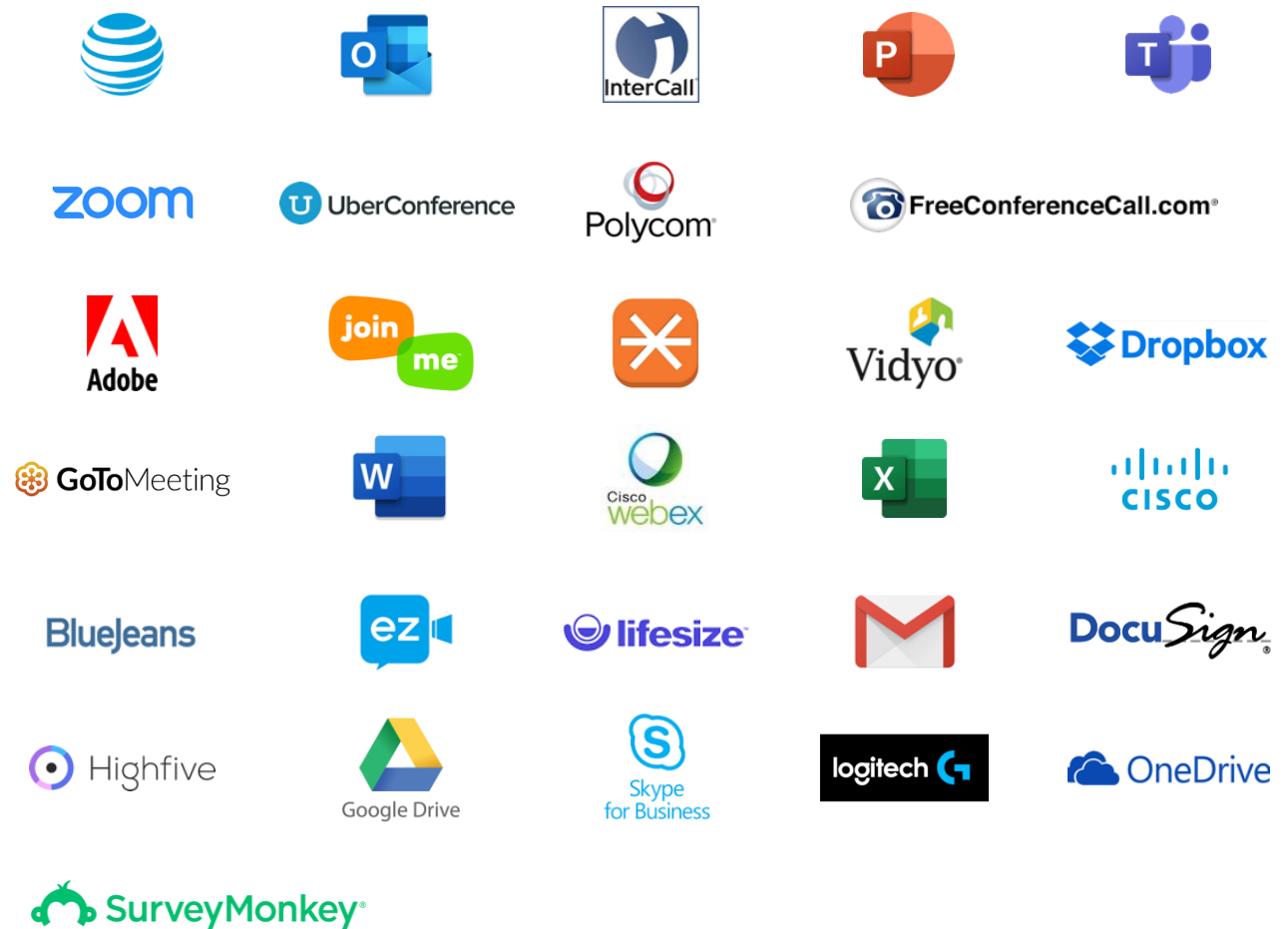
Chat or "raise your hand" if you need anything



# A single easy to use, convenient & secure platform

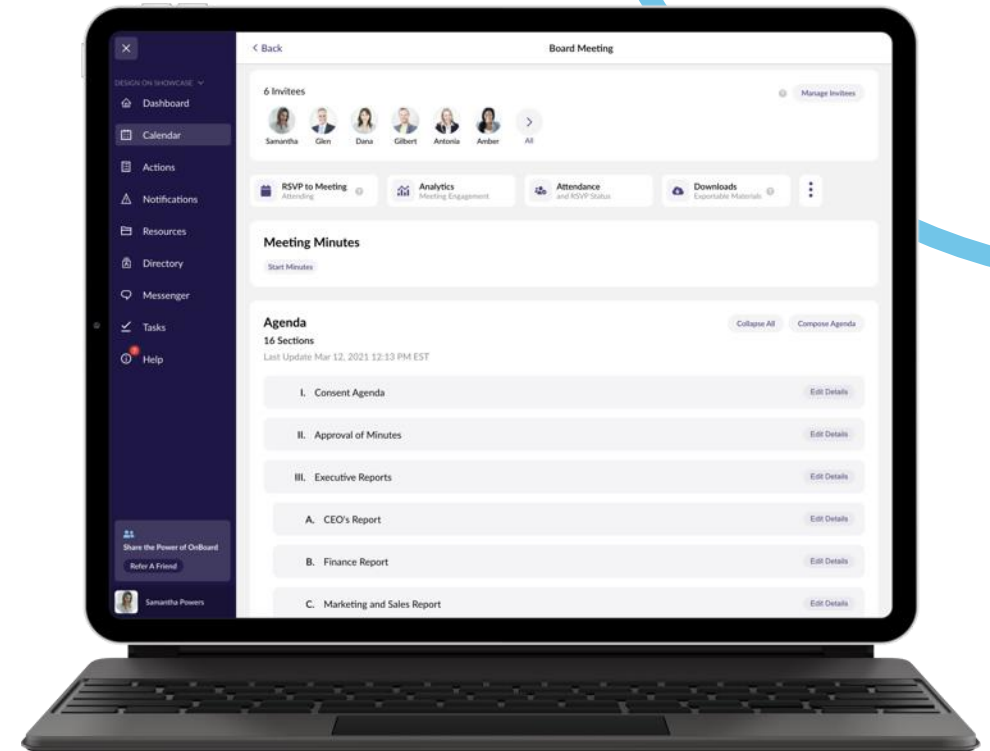


- One Platform for Meetings
- One-time Deployment
- One-time Training
- Best Value
- Completely Secure



# Transforming meetings

1. Single meeting platform
2. Strategic, forward-looking boardroom discussions
3. Engaged and participating board members
4. Directors' skills and knowledge more fully leveraged
5. Better organized and prepared board members
6. Secured and controlled confidential board material
7. Efficient, effective & productive meetings
8. Reduced administrative meeting preparation



# Why OnBoard?

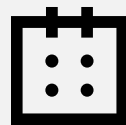
- Intuitive & easy to use
- Trusted & endorsed by market leaders across all industries
- Uncompromising security & compliance
- Innovative and future-focused
- Dedicated to your success



12,000+  
Boards &  
Committees



90,000+  
Users globally



500+  
Meetings Daily



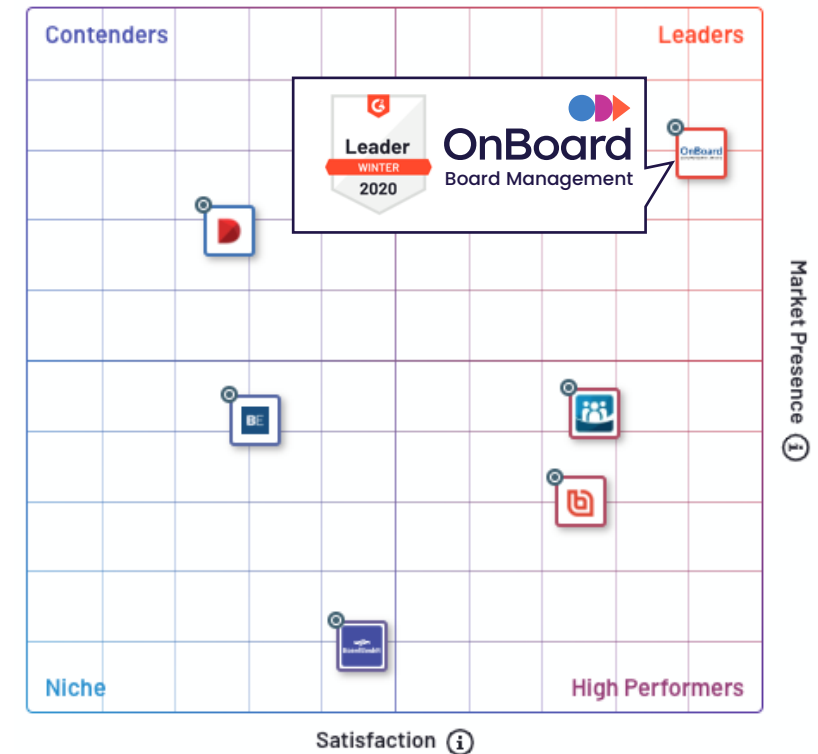
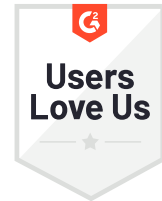
Lauterbach & Amen, LLP  
CERTIFIED PUBLIC ACCOUNTANTS



*The people have spoken & voted OnBoard...*

# The No.1 Board Management Platform

- ✓ Overall Satisfaction
- ✓ Complete Functionality
- ✓ Ease of Use
- ✓ Customer Support
- ✓ Ease of Doing Business
- ✓ Product Direction



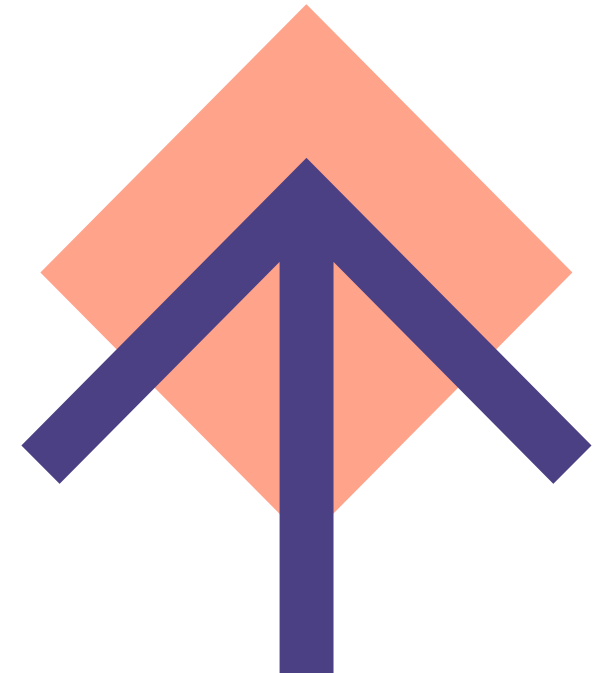
G2 Grid Scoring

# How the Global Pandemic Transformed Board Work

**Boards noted  
improved board effectiveness**

- 79% said their boards have improved effectiveness in the past 14 months.

**79%**



**Reported Improved  
Effectiveness**

# Collaboration in board meetings increased

- 66% said their boards have improved collaboration in the past 14 months.

66%



**Noted Improved  
Collaboration**



# Effectiveness: Board platform vs. No platform

81%



vs

58%



of Boards Using  
Board Management  
Solutions (57%) Reported  
Improved Effectiveness

of Non-BMS Boards  
(43%) Reported  
Improved Effectiveness



# Common Characteristics of High-Performing Digitally Native Boards

- 1 ► A Single System or Record
- 2 ► Secure, Flexible Communication
- 3 ► Agile Decisions

# Key OnBoard features for effective engagement



Collaborative agenda-based meeting builder



Engagement analytics at a meeting level



In-app messenger for boards and internal teams



Native Zoom integration



Task management and smart notifications



Multi device and browser compatible



Multi-org support



Built-in eSignatures, votes, and surveys



Shared notes and annotations for content review

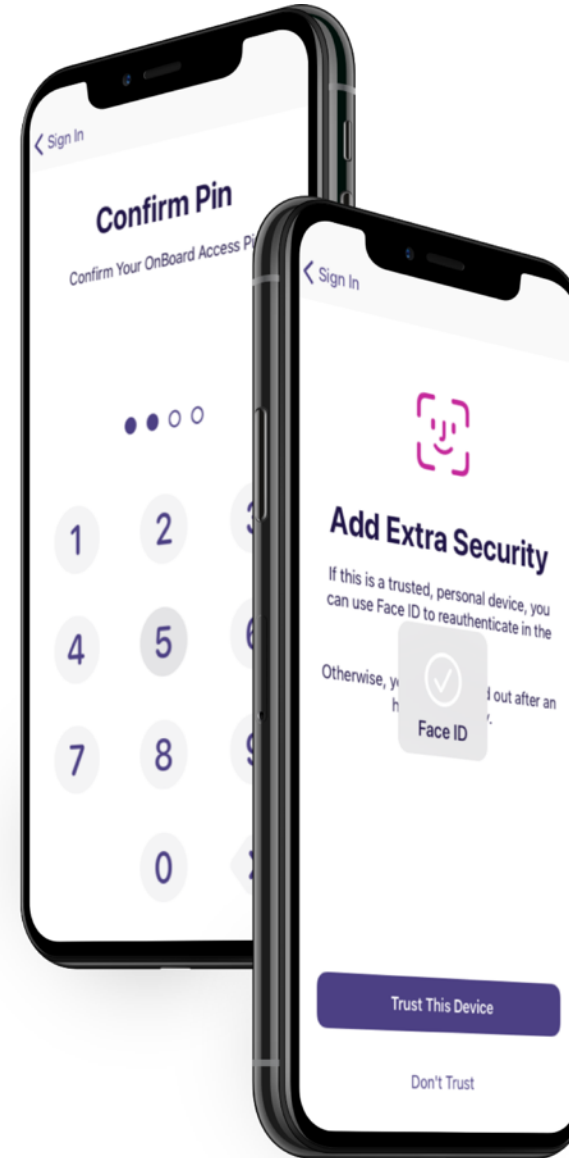


Unlimited repository for minutes and documents



# Best-in-class security

- Microsoft Azure cloud w/ geo-replication
- Soc2 Type 2 certified
- Multiple Stevie Awards winner for support
- Regular Penetration testing
- Remote lock and remote wipe enabled
- Face ID, Touch ID & 2-factor Authentication
- Data Encryption in transit & at rest
- OneLogin Single Sign On (SSO) integration





Best-in-Industry  
98% Customer  
Retention Rate



Customer Success  
Manager Assigned  
To Each Account



Best-In-Class Encryption,  
Intrusion Detection and  
DDoS Protection



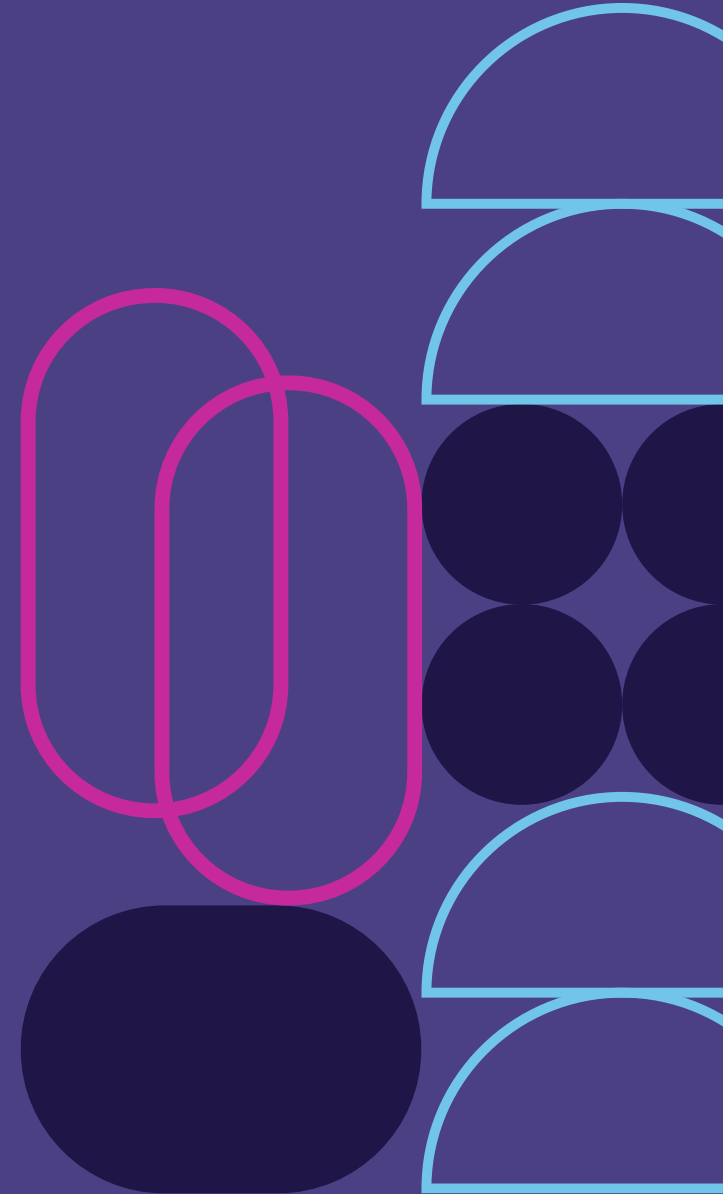
In-House Technical  
Support w/ 100%  
Satisfaction Rating



16-year History  
Developing Secure  
Collaboration Tools



Global Coverage Office  
Locations in US, UK,  
and Canada





Lauterbach & Amen

# Contact us

Reach out to your Client Manager

or

Amy Patz

Lauterbach & Amen, LLP

(630) 393-1483

[apatz@lauterbachamen.com](mailto:apatz@lauterbachamen.com)



**OnBoard**

[www.onboardmeetings.com](http://www.onboardmeetings.com)