

 20th ANNIVERSARY





“True design inspires”

Alan Waxman

FOUNDER & CHIEF EXECUTIVE



OUR STORY

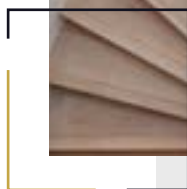
Since 1998, Landmass has created some of the most iconic and inspiring homes in London. We pride ourselves on our understated and timeless designs, focusing on space and light to create unique, breath-taking homes for our clients.

Our founder Alan Waxman is recognised as a pioneer who strives to push boundaries and innovate.

We translate your dreams into reality.

Notting Hill	001
St Katherine Docks	002
Belgravia	003
Kensington	004
Little Venice	005
Holland Park	006
Belgravia	007





INTRO

One of our most ambitious projects to date, Landmass turned a small, dilapidated building into this stunningly modern home. As ever, light and space were at the heart of this double-basement project, with inventive use of glass and floor plate configurations. An Al Fresco dining space was created to blur the boundaries between outside and in and a magnificent architectural staircase ensures that natural light can permeate the entire property.



































002

St Katherine Docks



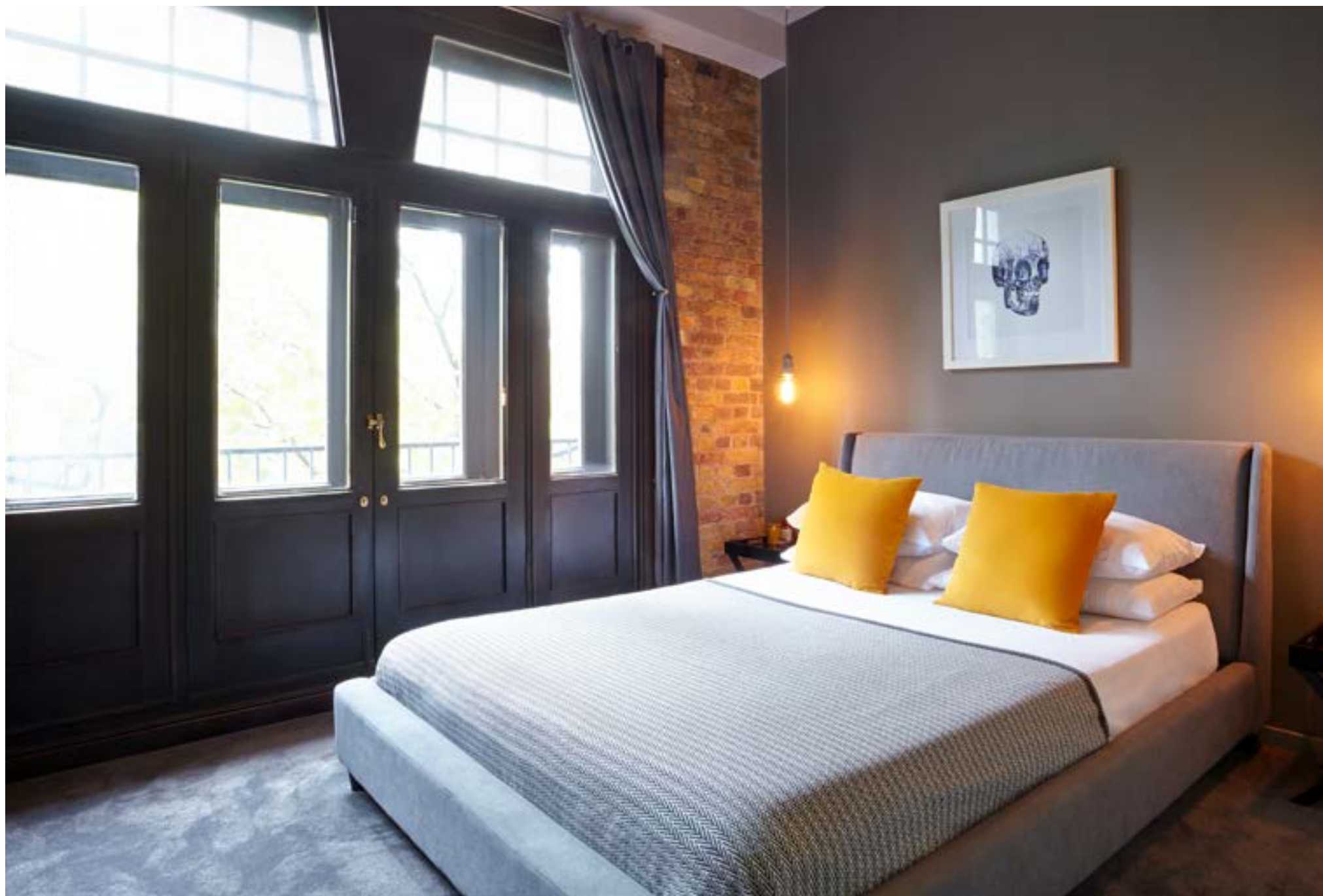
INTRO

An eclectic blend of tactile luxury and cool industrial chic, this playful property a short distance from St Katherine's Dock started life as an empty warehouse. Leaning on this iconic heritage, the new design contrasts exposed brick and brass fittings with deep blue velvet and flashes of brilliant colour for a unique, charmingly sophisticated property.























003

Belgravia

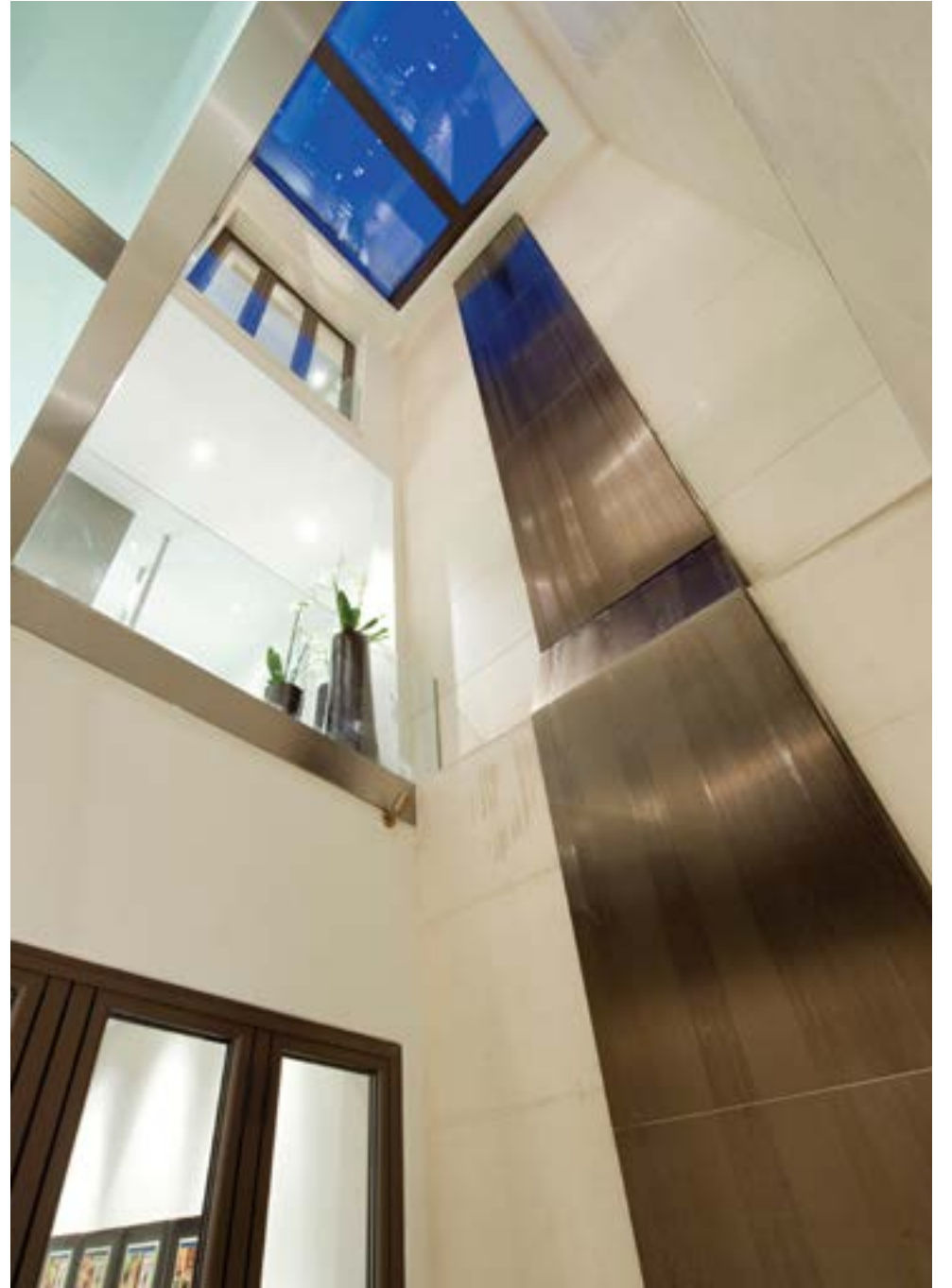


INTRO

Winner of Best Property in London & Best Interior Design in the United Kingdom, this property in Grosvenor Crescent is flooded with light – despite having two floors below ground. With a stunning inner atrium dominated by a 9-metre water fountain, it's the quintessential expression of Landmass' innovative style of design.





















INTRO

This five floor Victorian terraced house is in one of the most sought-after neighbourhoods in London, and so we created a design to match. After reconfiguring the property to make best use of the space, exceptional finishes and key statement pieces were used to create a luxurious yet welcoming feel. Light is a key feature whether streaming in from the period windows and with lit coffered ceilings, bookshelves and mirrors. Sophisticated, timeless and contemporary, the house is more than suited to its prestigious postcode.

























INTRO

Vast ceiling heights, spacious rooms and an innate sense of grandeur characterise this phenomenal Grade II listed house. Designed as a tranquil haven tucked away from the bustle of the city, the property was updated with a calmer, more contemporary palette. Period details have been kept pristine while extending and careful planning make the most of the space available, allowing the family to show off their impressive art collection to the full.



















006

Holland Park



INTRO

An ode to chic Scandinavian design, this property just a short walk from Holland Park was reconfigured from the ground up to create a spacious family home. Landmass extended the property into an unused courtyard to make the most of the space available, while tactile materials create a welcoming, comfortable environment. Awash with natural light, the warm woods and industrial-influenced lighting gives the entire property a cool, open loft feel.







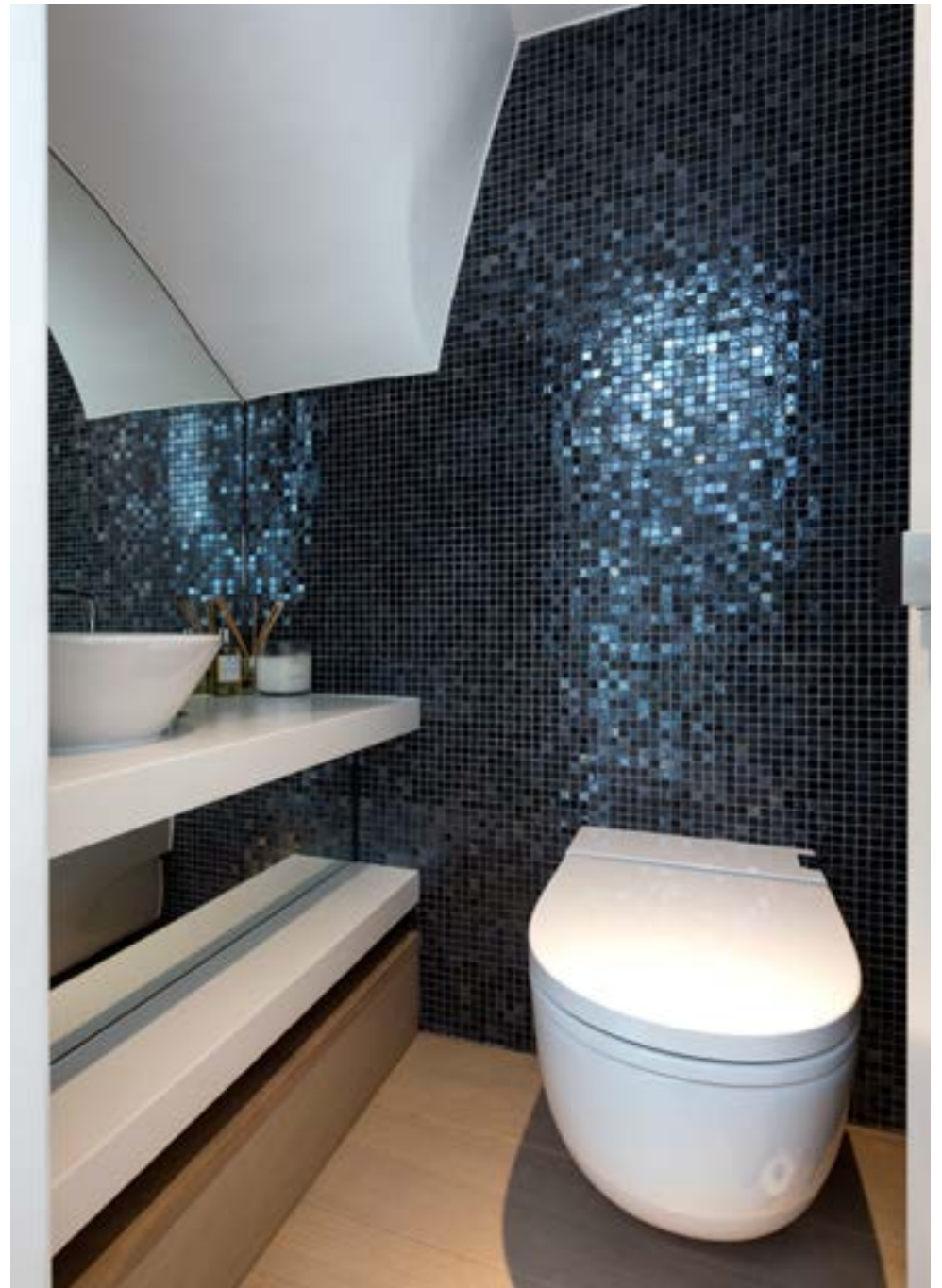


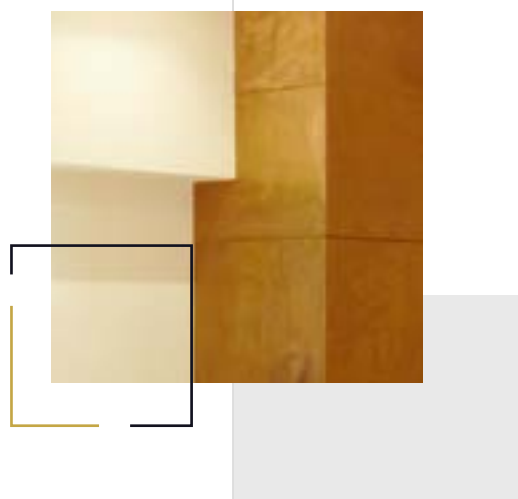












INTRO

Tucked away in one of Belgravia's finest mews – a type of property which Landmass has exceptional experience with – this stunning Grade II listed building was updated and transformed into a contemporary three bedroom home. Beautifully high ceilings, the introduction of natural light from the South facing roof terrace and stunning glass floors allow natural light to filter through the entire property, right down to the basement.





















L A N D M A S S

L O N D O N

48 Beak Street, London - W1F 9RL

www.landmass.co.uk

020 7439 8095

Landmass London Copyright Reserved ©

This document is property of Landmass London and may not be reproduced in any form without prior consent.

Disclaimer: The information contained in this document is based on estimates available at the time of enquiry and does not constitute a formal valuation and may not be relied upon for any purpose whatsoever other than as marketing advice.