



# KeyCall® Fire

Semi-Flush

**Fixfire**  
LIFE & PROPERTY PROTECTION

*your best alliance for compliance™*

## The Key Operated Fire Alarm Call Point



The KeyCall® Fire 'Semi Flush' variant enables existing standard call points to be changed to KeyCall® without the need for any builders attendances.

Compatible with a range of Conventional and Addressable Fire Alarm Systems.

### Applications include:

- Prisons
- Mental Healthcare
- Special Educational Needs (SEN) Schools

### KeyCall® ensures you always have the key!

KeyCall® can be built to use the same key that opens your doors ensuring that you always have the key to operate your Access Control and/or Fire Alarm System.



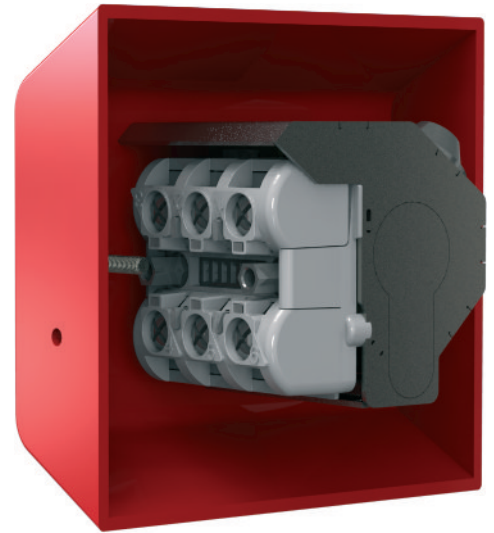


# KeyCall® Fire

Semi-Flush

## Features the following:

- Compatible with “EuroProfile” style cylinder. Typically suited/keyed-alike cylinders are fitted so that authorised persons can operate the Fire Alarm System, using the same key as used for area doors.
- Patent-pending Key ‘Click-latch’ mechanism ensures correct key position to activate Fire Alarm System.
- Robust all metal construction.
- Anti-ligature surface mounting design.
- Neat minimalistic one piece construction.
- Red fire indicator illuminates when KeyCall® is activated.
- Compatible with most common protocols of Fire Alarm System.
- Compatible with range of Conventional and Addressable Fire Alarm Systems
- Mounts on 35mm depth standard Single Gang Knock Out Box

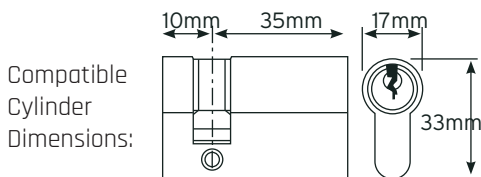


Rear View

ORDERING INFORMATION	
Product Part Nos	Description
KCSF/SMM	KeyCall® Fire Semi Flush surface mounting module
KC/IM/C470	KeyCall® interface module, 470 ohm conventional
KC/IM/SW	KeyCall interface module, sav-wire
KC/IM/XP95	KeyCall® interface module, XP95 protocol
KC/IM/H	KeyCall® interface module, Hochiki protocol
KC/IM/FC	KeyCall interface module, FireClass
KC/IM/ADT	KeyCall interface module, ADT
KC/IM/SS	KeyCall interface module, System Sensor
KC/IM/N	KeyCall interface module, Nittan
KC/ECA	KeyCall® Factory Cylinder assembly (Note. Assumes cylinder free-issued)
KC/SC/35	Torx style security screw, 35mm
KC/SC/45	Torx style security screw, 45mm

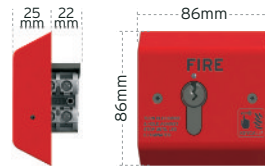
### EuroProfile Cylinder Specification

KeyCall® accepts a 45mm EuroProfile Cylinder.



### KeyCall® Dimensions

Front face - 86mm x 86mm  
 Depth - 47mm



**Note. Mounts on standard 47mm depth one gang KO box for flush installation.**

Visit our website  
www.fixfire.co.uk



Head Office  
 Mayflower House  
 Bodmin Road  
 Wyken  
 Coventry CV2 5DB

East Midlands & North East  
 (Regional Office)  
 Systems House  
 Old Station Close  
 Shephed LE12 9NJ



your best alliance for compliance™

Main Switchboard: 024 7661 6699 • Freephone: 08000 891999 • Fax: 024 7662 1990

E-mail: [compliance@fixfire.co.uk](mailto:compliance@fixfire.co.uk) • Website: [www.fixfire.co.uk](http://www.fixfire.co.uk)

Fixfire® is a trade mark of Avansys LLP registered in UK No OC384483

© Avansys LLP 2019