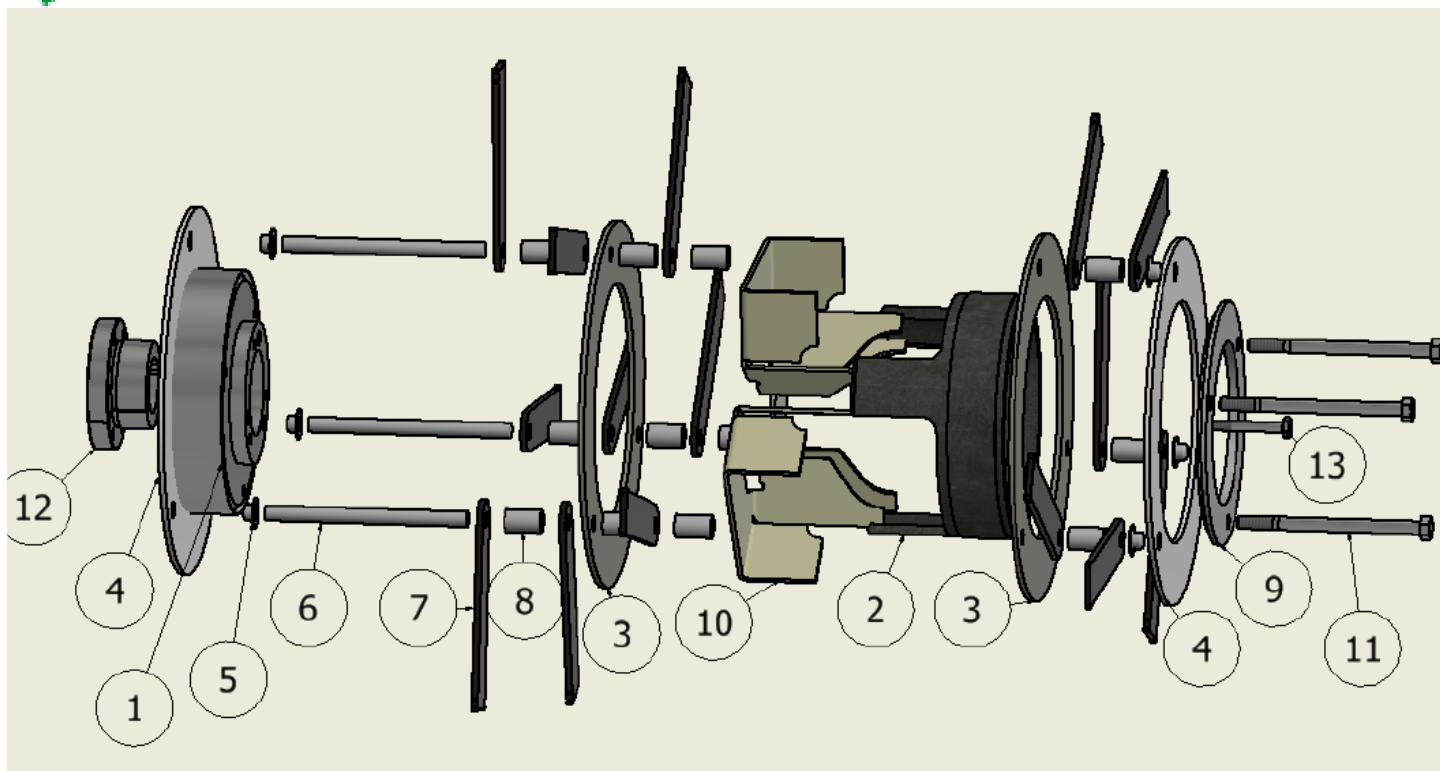




Hammer Mill Hub Assembly



Hub Parts

Rebuild your **AGBUILT** Hammer Mill Hub with genuine parts.

Follow the illustration to reassemble your hub for many more years of service.

Always Ask for



PARTS LIST			
ITEM	QTY	PART NUMBER	DESCRIPTION
1	1	1110-003	HUB BACK PLATE SD
2	1	1110-004	HUB CROWN
3	2	1110-005	HUBRING 9. OD5.943IDx.376
4	2	1110-002	HUBRING 9. 5OD.941ID x .430
5	6	1110-010	MILL HUB CAP
6	3	1110-008	HUB PIN
7	15	1110-007	MILL HAMMER
8	12	1110-009	HUB SPACER
9	1	1110-006	HUB HOLD DOWN PLATE
10	3	1110-001	DIVERTER
11	4	5110-001	Hex Bolt - UNC (Regular Thread - Inch)
12	1	5110-002	SD BUSHING1.375
13	3	AS 2465 - 1/4 x 2 UNC	Unified hexagon bolts, screws and nuts (UNC and UNF threads)