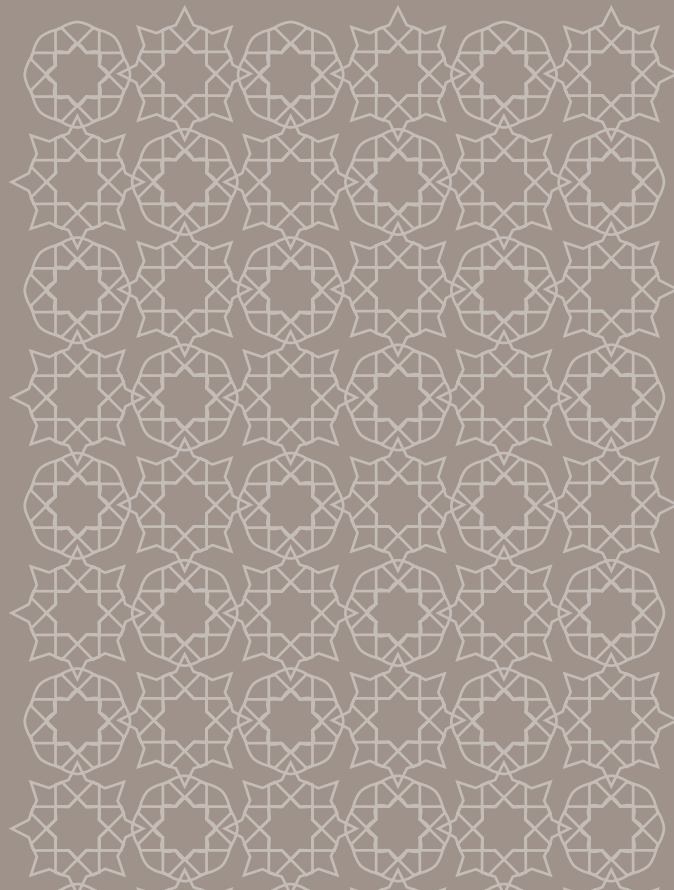
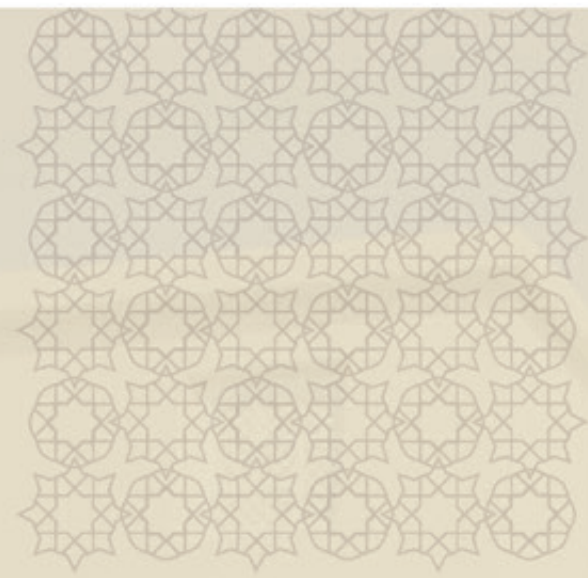


al furjan





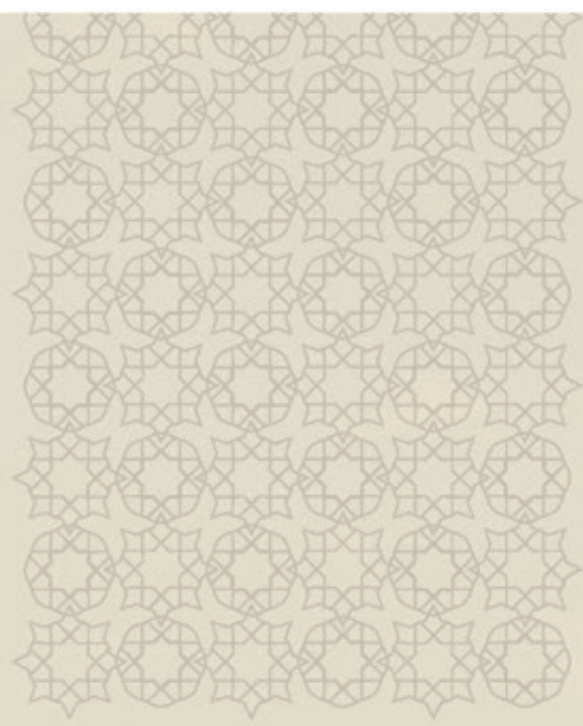
Al Furjan

Celebrate the true spirit of community at Al Furjan, a vibrant neighbourhood with ready-to-move-in four-bedroom villas and three-bedroom townhouses.

Al Furjan has been developed to make even simple, everyday pleasures truly memorable and encourage a more social way of life. Two community centres - Al Furjan Pavilion and Al Furjan West Pavilion - feature a range of shops, cafés and restaurants. Al Furjan Club offers a restaurant with indoor and outdoor seating, swimming pools, a sports court and a fully-equipped gym with four fitness studios.

Located in close proximity to Ibn Battuta Mall and the Expo 2020 site, the 560-hectare community is easily accessible from Sheikh Zayed Road, Sheikh Mohammed Bin Zayed Road and Al Yalays Road. Al Furjan is one of Nakheel's most popular and fastest growing communities.





Villa and Townhouse Types





4 Bedroom Villa Type 'A'

Gross floor area = 506.06 sq.m (5,447.18 sq.ft)

Total terrace = 151.05 sq.m (1,625.89 sq.ft)

Accessible terraces: 3

Individual plot size: 600 sq.m (6,458 sq.ft)

Ground Floor Plan



First Floor Plan



Floor plan: Numbers, square footage and floor plans are approximate. Final dimensions, square footage and floor plans may vary.



4 Bedroom Villa Type ‘B’

Gross floor area = 455.2 sq.m (4,900 sq.ft)
Total terrace = 110.01 sq.m (1,184.14 sq.ft)
Accessible terraces: 3
Individual plot size: 600 sq.m (6,458 sq.ft)

Ground Floor Plan



First Floor Plan



Floor plan: Numbers, square footage and floor plans are approximate. Final dimensions, square footage and floor plans may vary.



3 Bedroom Terrace Home (Middle)

Gross floor area = 301.21 sq.m (3,242.20 sq.ft)

Total terrace = 65.79 sq.m (708.16 sq.ft)

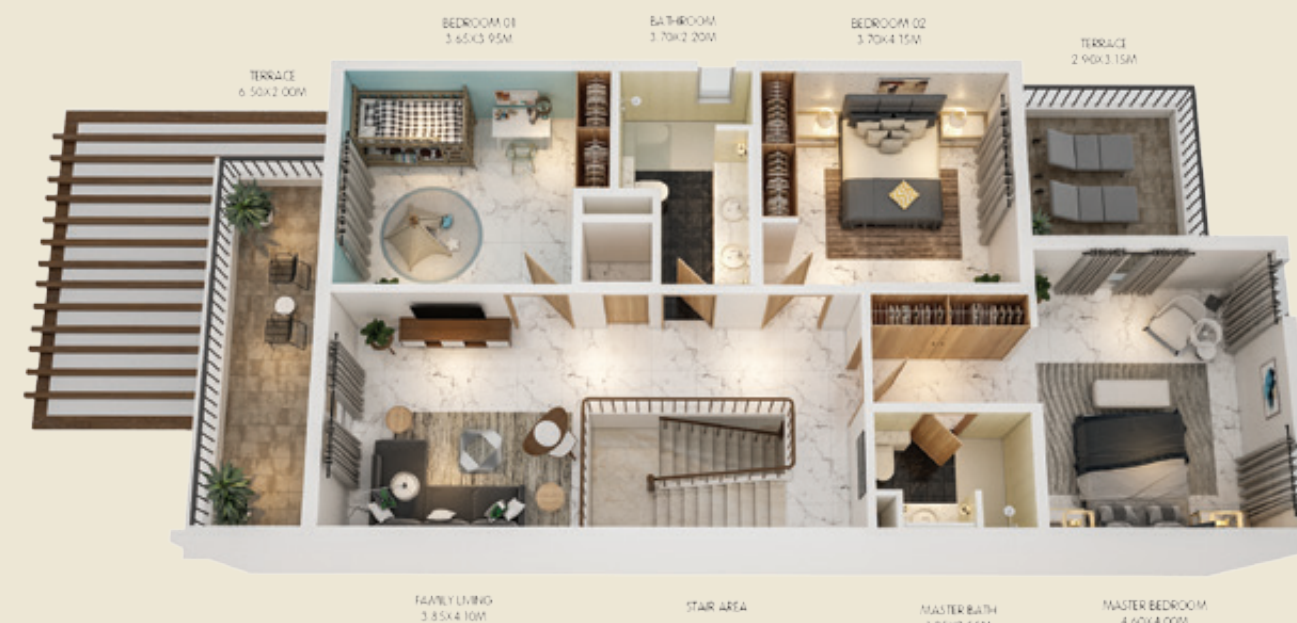
Accessible terraces: 2

Individual plot size: 224 sq.m (2,411 sq.ft)

Ground Floor Plan



First Floor Plan





3 Bedroom Terrace Home (Corner)

Gross floor area = 301.21 sq.m (3,242.20 sq.ft)

Total terrace = 65.79 sq.m (708.16 sq.ft)

Accessible terraces: 2

Individual plot size: 224 sq.m (2,411 sq.ft)

Ground Floor Plan



First Floor Plan



Floor plan: Numbers, square footage and floor plans are approximate. Final dimensions, square footage and floor plans may vary.

Rediscover Community Living

Al Furjan offers a range of dining, shopping, fitness and leisure options, encouraging an active and social lifestyle.



Gym



Communal Play Area



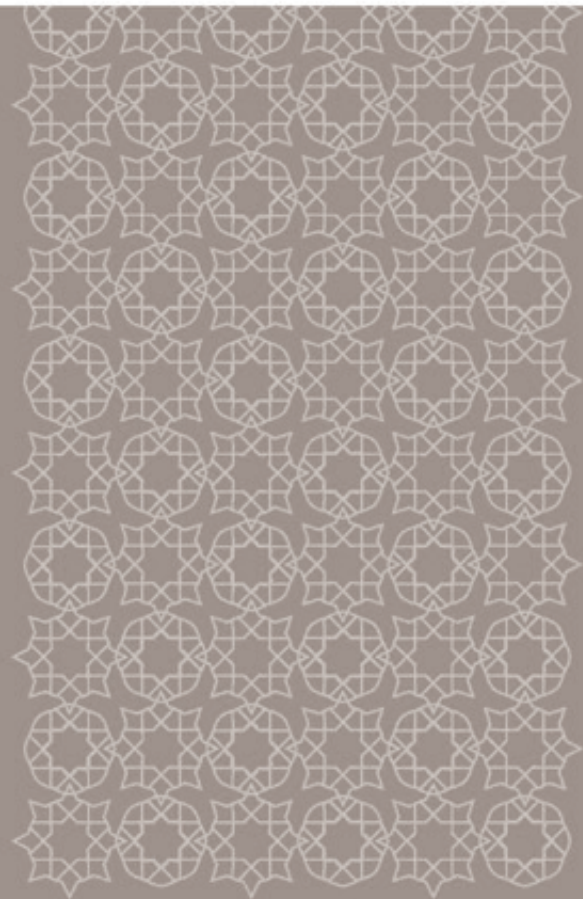
Al Furjan Club



Expansive Private Gardens



Spacious Terraces



Property Features

The Quortaj villas and townhouses combine an eclectic mix of colours and textures that showcase attention to detail and rich architectural elements. Tiered, green tile roofs and embellished white panels are accentuated by unique Quortaj arch designs.

The exceptional homes in Al Furjan have been carefully designed to satisfy every practical need with all modern comforts, offering spaces that are both functional and inspired. Specially selected modern interior styling provides homeowners with finishes that best suit their tastes.

Finishes

Main entrance and living area features

- Main entrance floor design in porcelain tiles
- Wooden doors
- Stair steps finished in stone
- Accessible terraces
- Independent laundry room
- Storage room

Powder room

- Ceramic floor and wall tiles
- Wooden doors with semi-solid veneered finish
- Feature wall lights

Kitchen features

- Ceramic floor tiles
- Wooden cabinets with stone counters
- Fitted with premium home appliances

Bathroom features

- Stone counters and feature mosaics
- Bathtub or built-in shower
- Ceramic floor and wall tiles
- Decorative wall lights in master bathroom

Bedroom features

- Ceramic floor tiles
- Built-in wardrobes

Community Amenities

- Community retail centres - Al Furjan Pavilion and Al Furjan West Pavilion - feature a variety of shops including a supermarket as well as restaurants and cafés.
- Al Furjan Club features swimming pools, a restaurant, gym and four fitness studios
- Landscaped gardens
- Convenient access to public transportation including an upcoming Dubai Metro station nearby
- Easy accessibility to Dubai's business districts and major tourist attractions
- Schools and other facilities nearby

If you are interested in buying a home at Al Furjan, please call +971 4 390 3333 or email info@nakheel.com

Al Furjan Masterplan



The developer reserves the right to make revisions. All the measurements and drawings are approximate. This information is subject to change without notice. Do not scale drawings. Artistic renderings, landscaping and images are for illustrative purposes only and are subject to change without notice. February 2020.



Nakheel

The Master Developer

Dubai-based Nakheel is a world-leading master developer whose innovative, landmark projects form an iconic portfolio of master communities and residential, retail, hospitality and leisure developments that are pivotal to realising Dubai's vision. Nakheel's waterfront projects, including the world-famous, award-winning Palm Jumeirah, have added more than 300 kilometres to Dubai's original, 70km coastline, paving the way for the development of hundreds of seafront homes, resorts, hotels and attractions.

Nakheel's master developments span 15,000 hectares, accommodate nearly 300,000 people and provide a growing range of destinations, attractions and facilities for Dubai's residents and tourists. They include Palm Jumeirah, The World, Jumeirah Islands, Jumeirah Park, Jumeirah Village, Al Furjan, The Gardens, Discovery Gardens, Jebel Ali Village, Dragon City, Nad Al Sheba, Warsan Village, International City and the upcoming Deira Islands – a new destination for tourism, living and leisure at Dubai's oldest, most traditional trading hub.

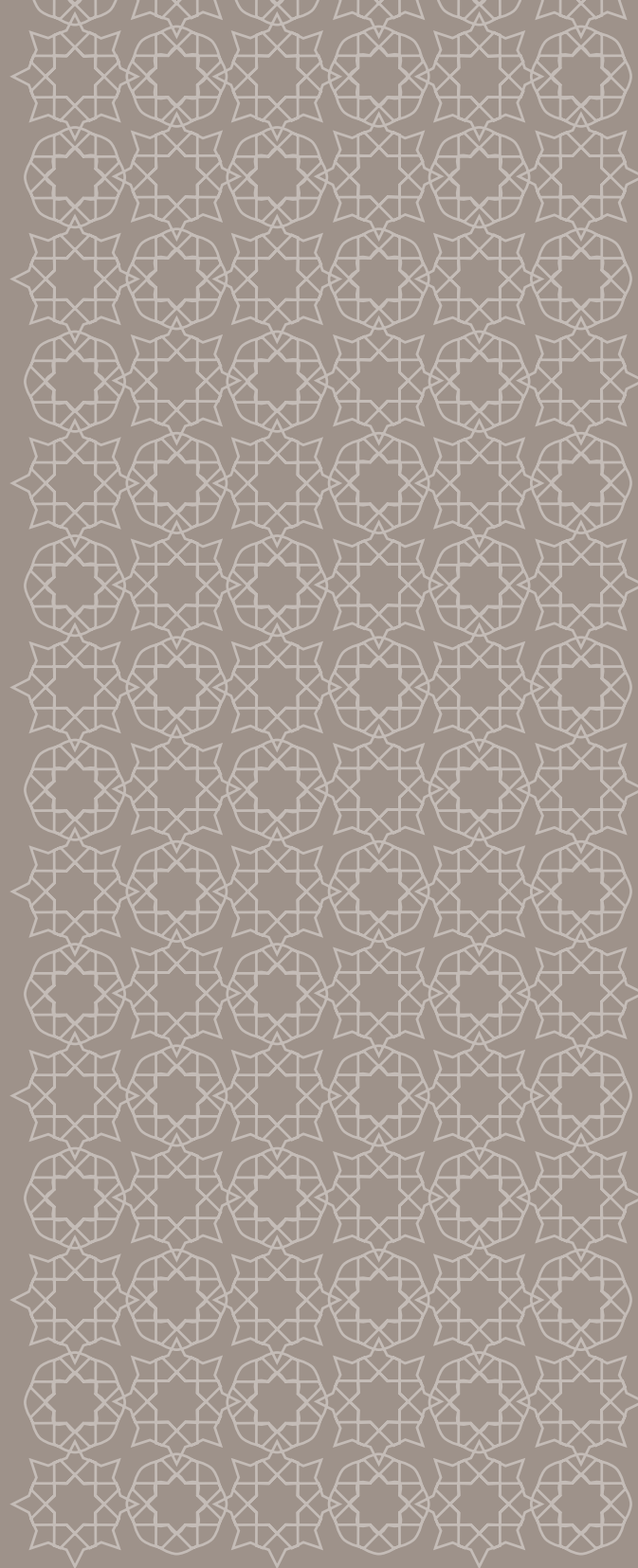
Nakheel Malls, the company's retail arm, owns and operates a range of assets including large-scale malls, dining and entertainment destinations and community shopping centres. Operational assets, with six million square feet of retail space, include Ibn Battuta Mall, Dragon Mart, Nakheel Mall, Golden Mile Galleria, The Pointe and Club Vista Mare, with West Beach at Palm Jumeirah, The Night Market, Warsan Souk, Al Khail Avenue, The Circle Mall, Nad Al Sheba Mall and others at various stages of construction and development.

Nakheel Hospitality's project portfolio comprises a range of hotels and resorts, from five star, luxury establishments to modest accommodation. The first four – Premier Inn Ibn Battuta Mall, Avani Ibn Battuta, ibis Styles Dragon Mart and Premier Inn Dragon Mart – are operational, with others under construction. Working with international, reputable hospitality brands, Nakheel is bringing new concepts to Dubai in line with the government's tourism vision. Joint venture partners currently include Spain's RIU Hotels & Resorts and Thailand's Centara Hotels & Resorts, under which two resorts at Deira Islands will be delivered in 2020. The St. Regis Dubai – The Palm, part of Nakheel's Palm Tower hotel and residential complex at the heart of Palm Jumeirah, is also due to open this year. Nakheel's hospitality project collection also includes a range of community clubs and restaurants.

Nakheel's residential leasing portfolio currently comprises 17,000 villas and apartments at The Gardens, Discovery Gardens, Jebel Ali Village, Nad Al Sheba, Palm Jumeirah, Badrah, Veneto and International City.

Palm Jumeirah





NAKHEEL

P.O.Box 17777 / Dubai / United Arab Emirates
Tel: +971 4 390 3333
alfurjan.ae