

SOUTHWESTERN UNION CONFERENCE

SWUC EDUCATION DATA PROFILE

DEMOGRAPHICS

The SWUC PK-12 school system is located in the Southwestern United States, including schools in Arkansas, Louisiana, New Mexico, Oklahoma, and Texas. The schools are grouped in five Conferences—Arkansas/Louisiana, Oklahoma, Southwest Region, Texas, and Texico. The SWUC Office of Education serves in an advisory role to the Conferences and schools.

THE SCHOOLS

The SWUC currently has 54 PK-12 schools: 35 PK-8 schools, eleven PK-10 schools, five PK-12 schools, and three 9-12 schools. The number of schools for 2023-2024 is shown below in Figure 1.

Figure 1: Number of Schools

Southwestern Union Conference					
Number of Schools 2023-24					
<u>Conference</u>	<u>PK-8</u>	<u>Jr. Academy</u>	<u>PK-12</u>	<u>Academy</u>	<u>Total</u>
ARK-LA	6	3	0	1	10
OKLAHOMA	4	3	0	0	7
SW REGION	8	0	0	0	8
TEXAS	12	4	4	1	21
TEXICO	5	1	1	1	8
TOTAL	35	11	5	3	54

THE STUDENTS

The SWUC currently serves 3,283 students in 54 schools. Opening enrollment for 2023-2024 is shown below in Figure 2.

SWUC EDUCATION DATA PROFILE

Figure 2: Opening Enrollment

SOUTHWESTERN UNION CONFERENCE						
2023-2024 Opening Enrollment						
GRADE	ARK-LA	OKLAHOMA	SW REGION	TEXAS	TEXICO	TOTAL
Pre-K	42	8	24	134	0	208
TK	0	0	0	0	6	6
K	33	17	32	140	34	256
1	27	27	24	149	22	249
2	18	15	24	147	19	223
3	21	23	13	148	30	235
4	26	13	16	150	31	236
5	29	18	20	168	18	253
6	18	14	14	153	26	225
7	23	20	16	184	17	260
8	25	19	16	198	18	276
PK-8 Subtotal	262	174	199	1571	221	2427
9	33	15	0	175	14	237
10	28	8	0	160	12	208
11	37	10	0	141	19	207
12	37	6	0	150	11	204
9-12 Subtotal	135	39	0	626	56	856
Total	397	213	199	2197	277	3283

A year ago, the SWUC served 3,275 students. This 0.24 percent increase in overall SWUC enrollment during the past year is shown below in Figure 3.

Figure 3: Enrollment Comparison

Southwestern Union Conference			
Enrollment Comparison			
Grade	2022-23	2023-24	Change
PK	159	208	49
TK	0	6	6
K	258	256	-2
1	230	249	19
2	262	223	-39
3	244	235	-9
4	263	236	-27
5	215	253	38
6	264	225	-39
7	290	260	-30
8	261	276	15
PK-8 Subtotal	2,446	2,427	-19
9	220	237	17
10	221	208	-13
11	197	207	10
12	191	204	13
9-12 Subtotal	829	856	27
TOTAL	3,275	3,283	8

SWUC EDUCATION DATA PROFILE

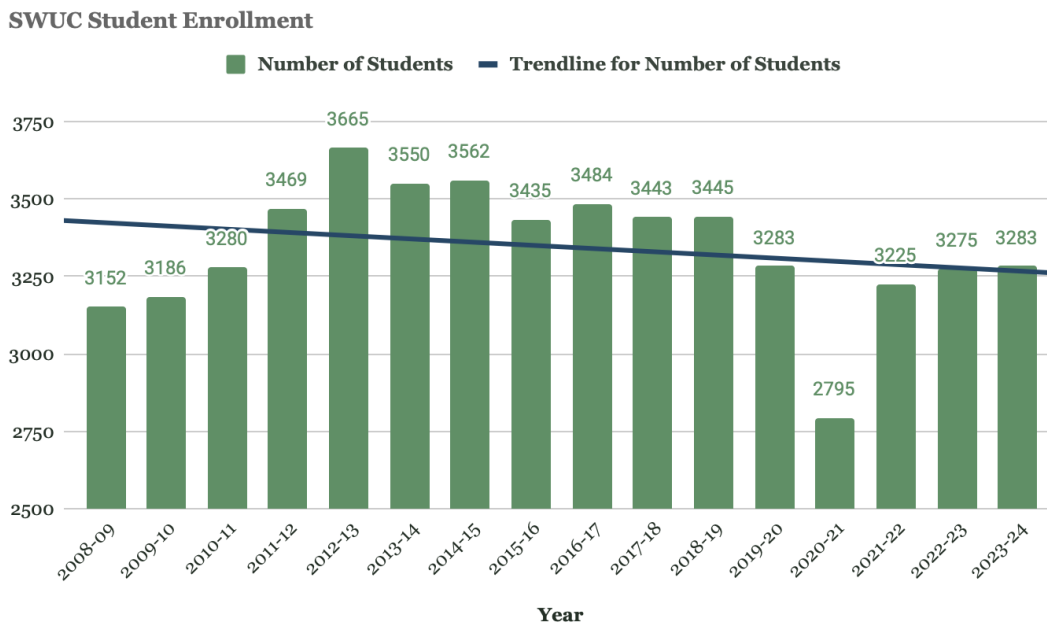
Ten years ago, the SWUC served 3,550 students. This 7.52 percent student decrease in overall SWUC enrollment during the past ten years is shown below in Figures 4 and 5.

Figure 4: 10 Year Enrollment Summary

Southwestern Union Conference 10 Year Enrollment Summary																
	08-09	09-10	10-11	11-12	12-13	13-14	14-15	15-16	16-17	17-18	18-19	19-20	20-21	21-22	22-23	23-24
Pre-K	0*	0*	0*	0*	0*	0*	0*	0*	163	181	205	158	86	147	159	208
TK	0	0	0	0	0	0	0	0	0	0	0	0	0	0	0	6
K	221	245	223	252	273	261	256	296	235	249	231	219	204	221	258	256
1	280	253	284	265	281	283	289	252	293	228	247	235	214	278	230	249
2	284	262	258	295	284	272	288	265	272	292	250	225	195	237	262	223
3	247	277	271	286	310	281	273	285	259	260	296	259	201	236	244	235
4	261	250	284	286	311	313	276	278	292	253	260	268	222	214	263	236
5	301	270	248	344	315	300	323	268	270	284	264	269	235	273	215	253
6	261	293	285	293	349	314	303	313	259	274	301	250	234	287	264	225
7	274	258	282	287	318	330	321	281	307	262	296	289	213	263	290	260
8	249	255	260	303	305	326	335	310	281	308	261	278	243	244	261	276
K-8 Subtotal	2,378	2,363	2,395	2,611	2,746	2,680	2,664	2,548	2,631	2,591	2,611	2,450	2,047	2,400	2,446	2,427
9	215	223	218	223	253	228	255	251	236	218	243	210	205	214	220	237
10	208	221	246	216	237	228	230	246	223	232	185	237	188	220	221	208
11	179	182	210	185	204	216	197	194	205	198	220	178	190	190	197	207
12	146	189	210	231	209	198	216	196	189	204	186	206	165	201	191	204
Special	6	8	1	3	6	0	0	0	0	0	0	2	5	8	0	0
9-12 Subtotal	754	823	885	858	909	870	898	887	853	852	834	833	753	833	829	856
Total	3,132	3,186	3,280	3,469	3,655	3,550	3,562	3,435	3,484	3,443	3,445	3,283	2,795	3,225	3,275	3,283

**Pre-K not included* *Does not include: Oklahoma 11/12 (Sycamore Academy)*

Figure 5: Trend in Student Enrollment



SWUC EDUCATION DATA PROFILE

This year, SWUC academies currently serve 809 students, while 781 students were served 10 years ago. This 3.6 percent increase in overall SWUC academy enrollment during the past ten years is shown in Figure 6.

Figure 6: Academy Enrollment

Southwestern Union Conference																
Secondary Enrollment																
School Years 2009-2024																
Academy	09-10	10-11	11-12	12-13	13-14	14-15	15-16	16-17	17-18	18-19	19-20	20-21	21-22	22-23	23-24	Difference 22/23-23/24
Burton Adventist Academy	127	133	133	134	116	112	127	139	153	125	122	107	113	103	118	15
Chisholm Trail Academy	204	189	170	186	171	165	164	152	149	149	144	151	162	157	174	17
Conroe Adventist Academy*				28	27	28	29	19	21	11	19	5	7	8	0	-8
Dallas Christian Academy*				30	36	36	33	33	20	24	30	24	20	20	10	-10
Houston Adventist Academy**				49	44	44	41	45	49	58	65	58	64	83	80	-3
North Dallas Adv Academy	48	59	78	76	88	107	108	112	118	115	112	99	141	135	128	-7
Ozark Adventist Academy	117	173	156	156	146	156	157	152	147	147	131	111	125	129	126	-3
Sandia View Academy	46	45	32	33	32	29	33	41	51	33	33	31	42	38	46	8
Scenic Hills Christian Academy*								13	17	19	22	33	30	22	25	3
South Texas Christian Academy	71	86	95	91	100	97	126	102	87	88	84	68	57	72	76	4
Tulsa Adventist Academy			9	16	21	22	24	21	27	23	26	20	21	28	26	-2
Totals	613	685	673	799	781	796	842	829	839	792	788	707	782	795	809	14

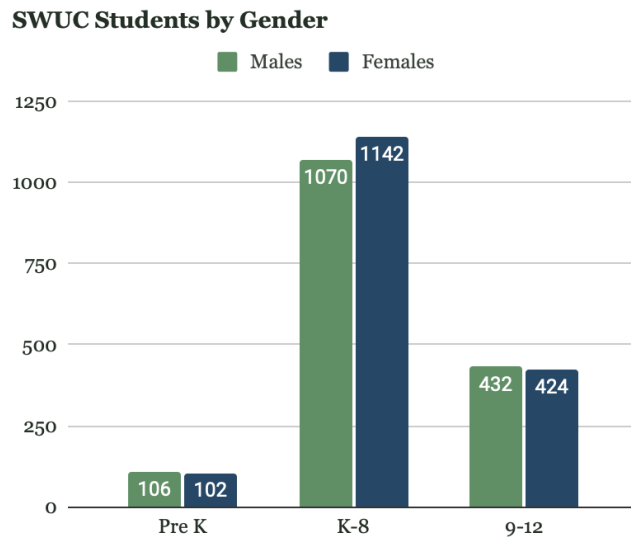
*Satellite schools of North Dallas Adventist Academy

**Formerly The Oaks Christian Academy (years 12-13 to 18-19)

The SWUC enrollment by gender for 2023-2024 is shown in Figure 7.

SWUC EDUCATION DATA PROFILE

Figure 7: Students by Gender



The number of SWUC student baptisms historically is shown in Figure 8.

Figure 8: Student Baptisms

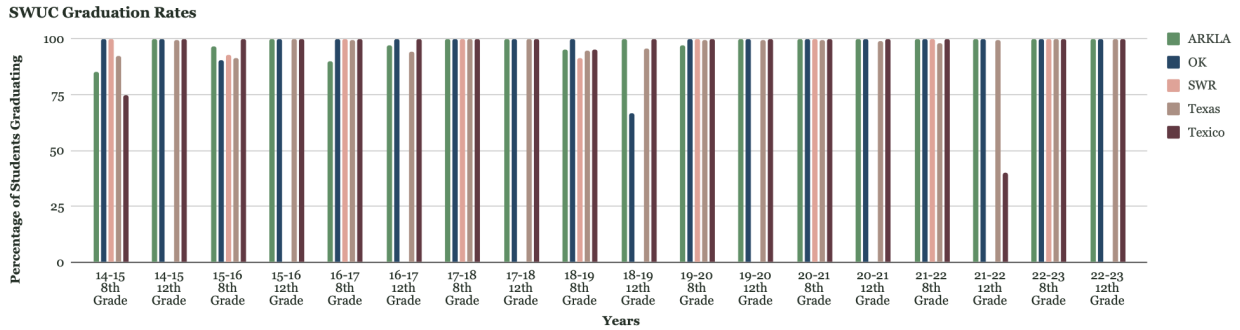
Baptism Statistics 2006-2023			
Year	Enrollment	Baptisms	# of Schools
2006-2007	3,144	173	67
2007-2008	3,241	144	62
2008-2009	3,132	189	62
2009-2010	3,186	170	64
2010-2011	3,280	117	65
2011-2012	3,469	189	68
2012-2013	3,655	138	70
2013-2014	3,550	0*	70
2014-2015	3,562	102	68
2015-2016	3,435	90	65
2016-2017	3,484	65	64
2017-2018	3,443	77	59
2018-2019	3,445	87	58
2019-20	3,283	83	59
2020-21	2,795	83	60
2021-22	3,275	109	58
2022-23	3,283	112	54

*Note: 2013-14 and newer use DataRollup information.

The SWUC graduation rate during the past several years is shown in Figure 9.

SWUC EDUCATION DATA PROFILE

Figure 9: Graduation Rates



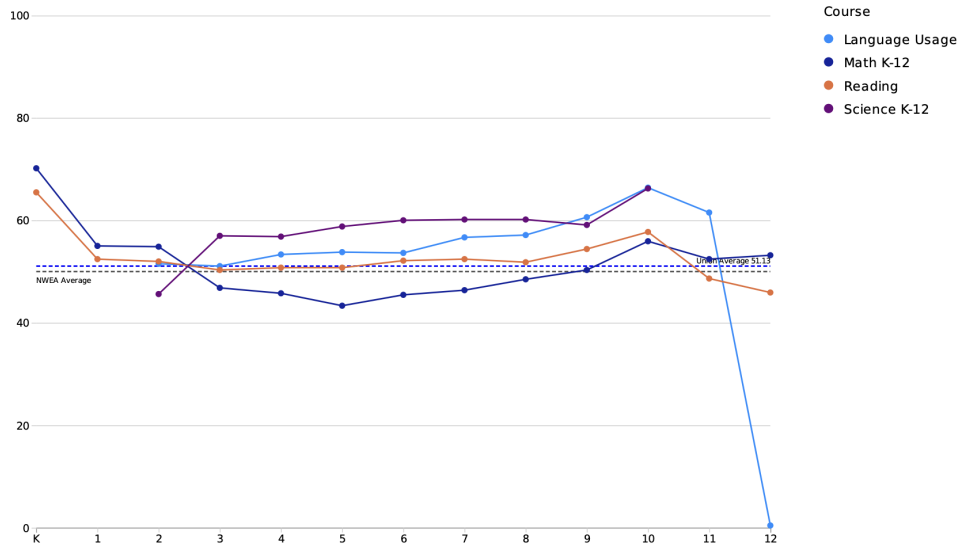
NWEA MAP Report

The Southwestern Union Conference current year MAP results are shown below in Figures 10, 11, and 12. These results only reflect the schools that completed these tests this year. NAD reporting on these test scores will increase in accuracy in the years to come.

Figure 10: Results Graph

2023-2024 Southwestern Union Conference

Performance summary by percentile



SWUC EDUCATION DATA PROFILE

Figure 11: Conference Performance Summary

2023-2024 Conference performance summary

Name	K	1	2	3	4	5	6	7	8	9	10	11	12
Arkansas-Louisiana Conference	67	58	51	49	52	50	46	50	45	48	68	45	24
Oklahoma Conference	76	46	49	46	49	36	55	65	56	67	62	56	28
Southwest Region Conference							64		90				
Texas Conference	67	54	54	52	52	54	53	53	55	57	60	38	24
Texico Conference							40						

Figure 12: Conference Performance Details

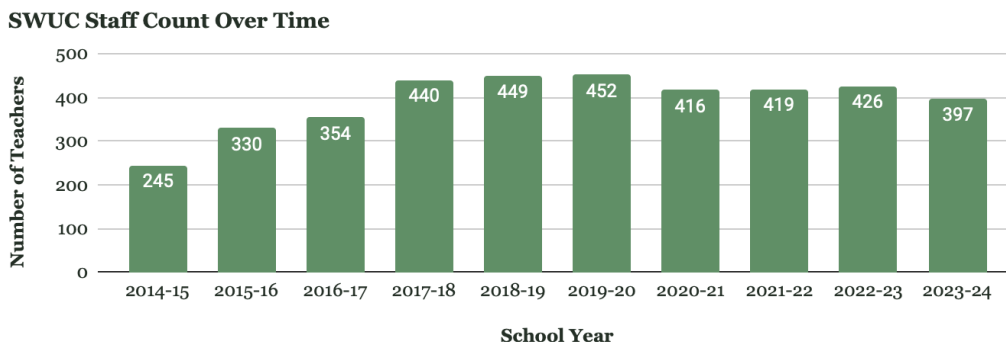
2023-2024 Conference performance details

Name	K	1	2	3	4	5	6	7	8	9	10	11	12
Arkansas-Louisiana Conference	67	58	51	49	52	50	46	50	45	48	68	45	24
Language Usage			51	50	51	54	49	53	48	53	80	68	2
Math K-12	68	60	48	41	43	41	46	40	37	46	56	53	43
Reading	66	57	52	48	55	48	43	41	43	44	68	55	49
Science K-12			58	58	60	58	47	64	51	50	70		
Oklahoma Conference	76	46	49	46	49	36	55	65	56	67	62	56	28
Language Usage			50	44	52	36	55	70	59	68	67	79	
Math K-12	80	48	51	43	46	23	46	63	56	63	57	75	61
Reading	71	44	46	45	45	35	55	62	49	67	59	69	55
Science K-12			53	54	48	63	65	62	70	64			
Southwest Region Conference							64		90				
Language Usage							66		92				
Math K-12							57		84				
Reading							63		88				
Science K-12							71		94				
Texas Conference	67	54	54	52	52	54	53	53	55	57	60	38	24
Language Usage			52	52	54	56	54	56	58	61	64	58	
Math K-12	69	55	56	48	46	46	45	45	49	50	56	50	55
Reading	65	53	53	52	51	53	53	53	54	55	55	44	44
Science K-12			27	58	56	60	62	59	61	60	66		
Texico Conference							40						
Language Usage							34						
Math K-12							44						
Reading							42						

THE TEACHERS

The number of SWUC teachers and staff over the past few years is shown in Figure 13.

Figure 13: Staff Count Over Time



SWUC EDUCATION DATA PROFILE

The teacher FTEs over time for the SWUC are shown in Figures 14 and 15.

Figure 14: Teacher FTE Count by Conference

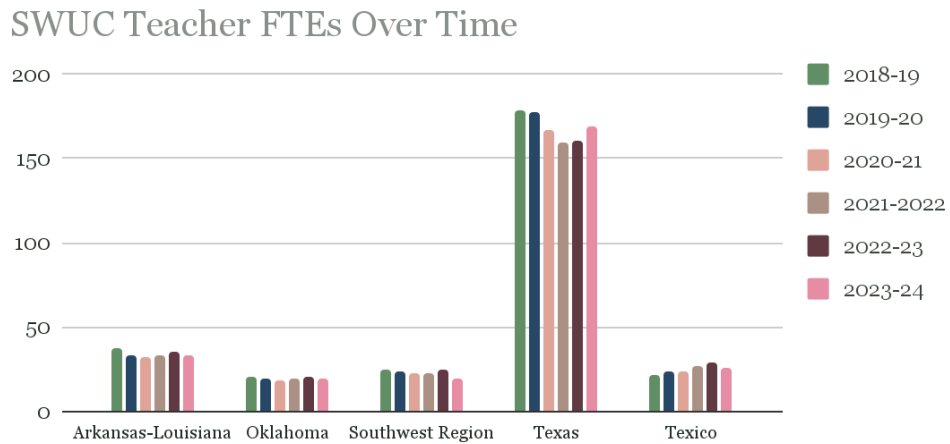


Figure 15: Total Teacher FTE Count

