

FLEXCELL[®] FX-5000[™] Compression System



Apply compression to tissue samples or 3D cell-seeded constructs.

- Computer-regulated bioreactor that applies **cyclic** or **static** compression to 3D cell-seeded constructs or tissue samples *in vitro*.
- Positive air pressure used to yield up to 14 lbs of applied force (minimum force resolution of 0.1 lbf).
- *In vivo* tissue strains and frequencies simulated in 3D constructs or tissue samples from muscle, lung, heart, blood vessels, skin, tendon, ligament, cartilage, and bone.
- State-of-the-art digital valve automatically regulates and maintains pressure for a specified compression regimen.
- Samples compressed in a BioPress[™] culture plate or StagePresser[™] microscope device between a piston and stationary platen.
- Multiple frequency, amplitude, and waveform changes programmed in one regimen (*Fig. 9*).
- Four FlexLink[®] controllers can be driven with one FX-5000[™] System.
- Frequency range: 0.01 - 5.0 Hz.

Waveforms available:

- *Static*
- *Sinusoidal*
- *Heart Stimulation*
- *Triangular*
- *Square*
- *Custom*

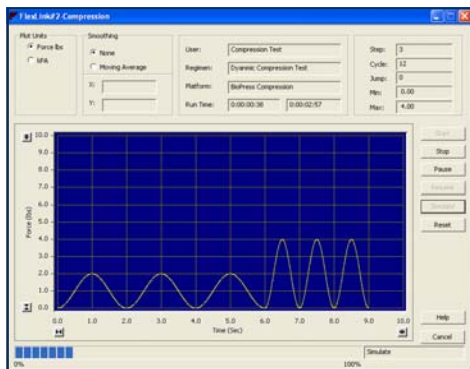


Figure 9. FlexSoft[®] waveform plot showing a sine wave with various frequency and amplitude changes.

FX-5000[™] Compression System includes

- Host computer with 17" flat panel monitor
- FlexSoft[®] FX-5000[™] software
- FX-5000[™] Compression FlexLink[®]
- Compression accessory package:
 - BioPress[™] baseplate and four gaskets
 - Compression clamping system
 - Four BioPress[™] culture plates
 - Stationary platens
 - Tubing and quick disconnects

ORDERING INFORMATION (Please contact distributor for pricing)

Catalog Number	Product/Item	Price
FX-5000C	Flexcell [®] FX-5000 [™] Compression System	

COMPRESSION EQUIPMENT