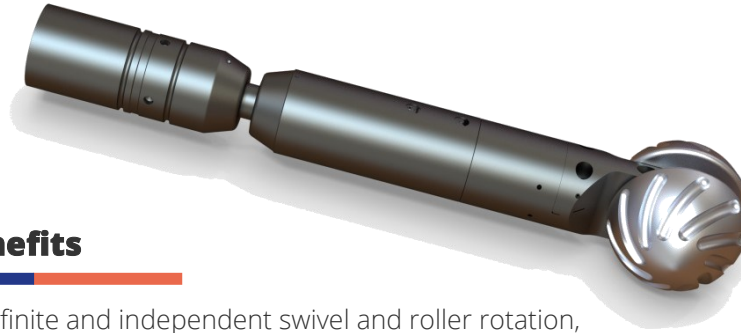


# Articulating Holefinder™

**Impact Selector's Articulating Holefinder™** is an engineered wireline conveyance solution, designed to navigate in irregular open hole wells, with restrictions, deviations, ledges, and washouts.

The Articulating Holefinder ensures that target depth is reached, and gives the wireline service company the flexibility to attach modular devices that convey, centralize, and lift the tool string.



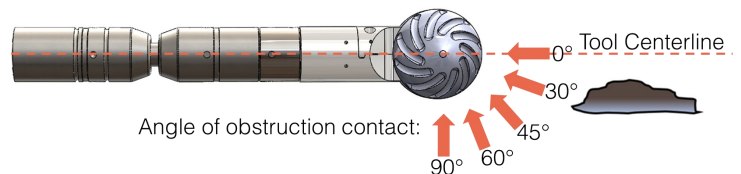
## Features and Benefits

- ▶ Full articulation - Indefinite and independent swivel and roller rotation, and 8° of angular deflection.
- ▶ Flexible - Force-determined, non-fixed joint and ball aids conveyance over and around restrictions.
- ▶ Modular - Allows for the attachment of various roller conveyance options.
- ▶ Simple, low-maintenance, and rugged construction.
- ▶ Choice of connections to suit wireline service provider's tool strings.

## Tool Specifications

<b>Outside Diameter</b> (in / mm)	3.375 / 85.73
<b>**Minimum Length</b> (in / m)	31.6 / .80
<b>**Maximum Length</b> (in / m)	39.6 / 1.01
<b>**Minimum Weight</b> (lbs / kg)	35.8 / 16.24
<b>**Maximum Weight</b> (lbs / kg)	56.5 / 25.63
<b>Ball Size</b> (in / mm)	4.350 - 7.125 / 110 - 181
<b>Tension Rating</b> (lbs)	100,000
<b>Compression Rating</b> (lbs)	100,000
<b>Temperature Rating</b> (°F / °C)	400 / 204
<b>Pressure Rating</b> (psi / MPa)	25,000 / 172.4

## Deflection Specifications

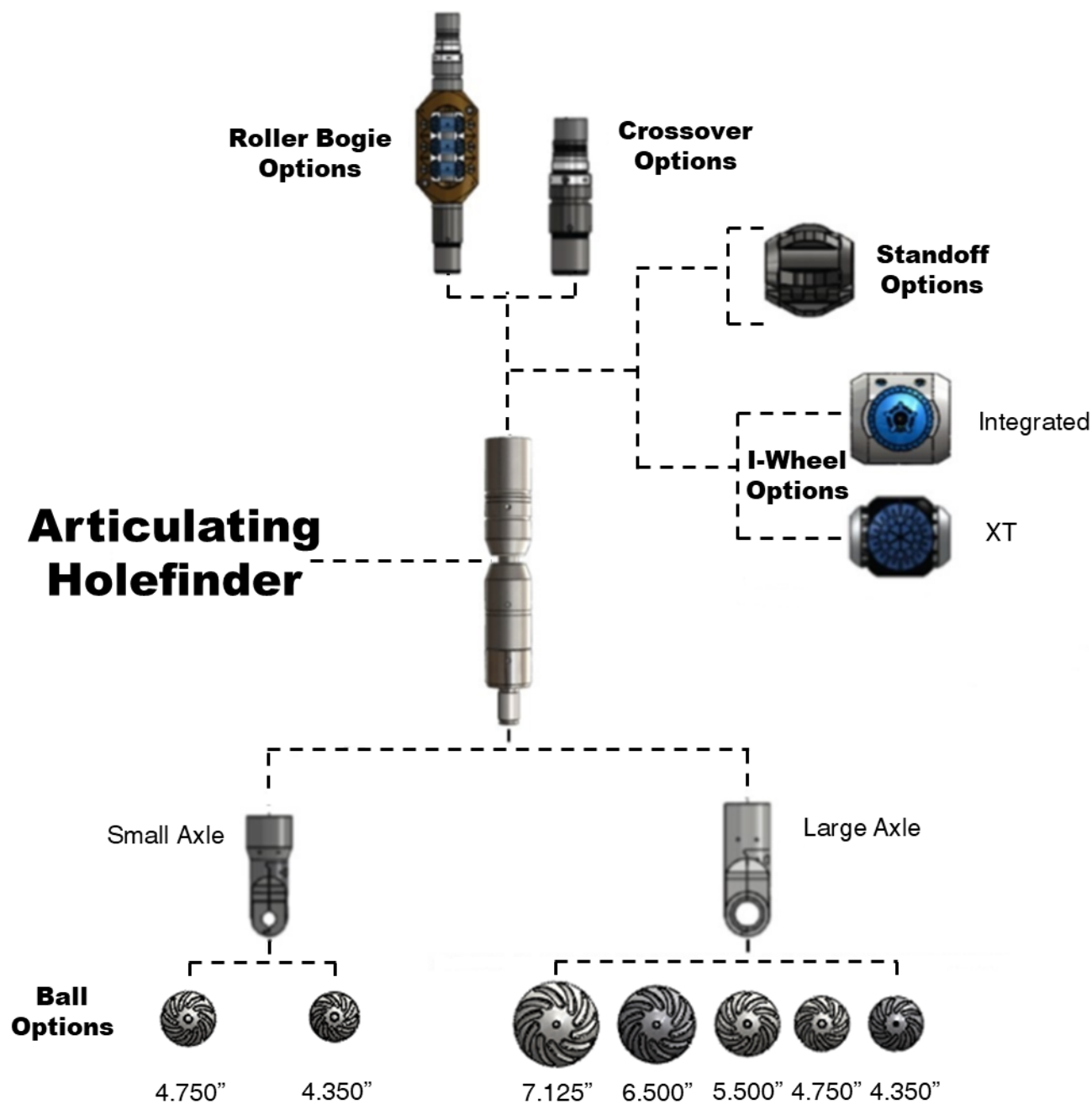


Angle (°)	Deflection Begins (lbs)	Full Deflection (8°) (lbs)
0	550	-
30	210	430
45	180	380
60	170	330
90	120	260

\* All values ±10%

\*\*Maximum and minimum weights and lengths are based on assemblies using different modular options.

## Flexible Tool Configuration



**IMPACT SELECTOR®**  
Intelligent Conveyance® Technologies



1-800-238-9239 (USA)



impact@impactselector.com



www.impactselector.com

ISO 9001-2015 / ISO 45001-2018  
Heath, TX-USA and Aberdeen, Scotland-UK

©Impact Selector – All rights reserved. November 2022