



Solid Edge

Synchronous Technology

100 times faster than with traditional CAD

"Probably 50% of us are 100% synchronous. It's very much a time saver."

-Designfusion Customer

Creates new designs in half the time it took using history based modeling

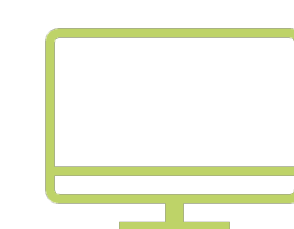
A Complete Product Development Portfolio

Solid Edge is the most complete hybrid 2D/3D CAD system that uses synchronous technology for accelerated design, faster change, and improved imported reuse. With superior part and assembly modeling, drafting, transparent data management, and built-in finite element analysis, Solid Edge eases the growing complexity of product design.

Let's See Who We Are?

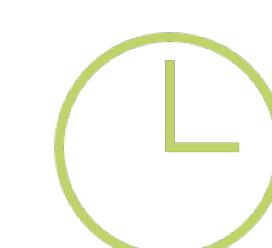
Designfusion is the largest dedicated solution provider of Siemens PLM software in North America. With an expert support team and a decade of history in the industry designfusion is the #1 choice for companies looking to best enhance their software acquisition.

Features



Digital Prototyping

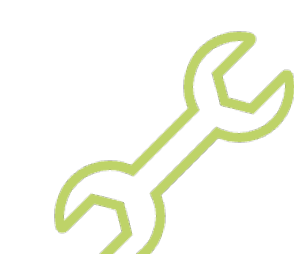
With Solid Edge you can build entire 3D digital prototypes and optimize your designs before production.



Faster Design

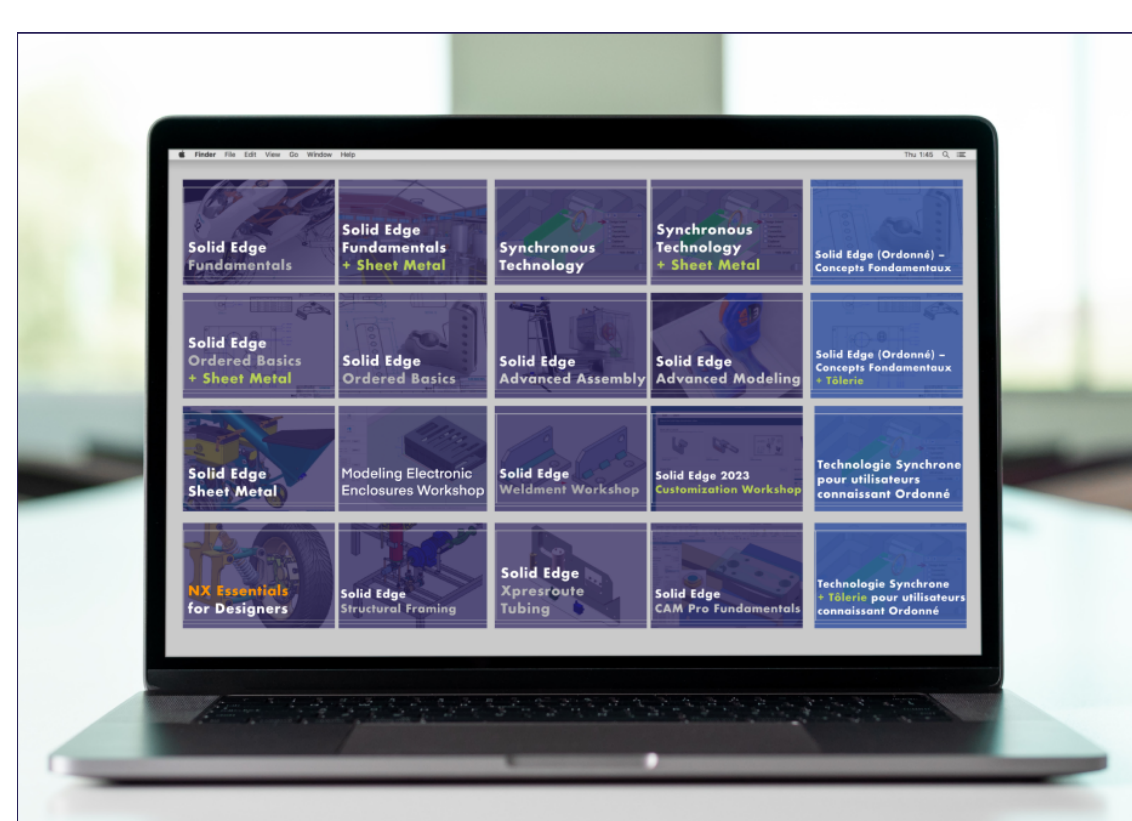
Getting products to the market faster, executing revisions quicker, and reusing more imported 2D & 3D designs.

Design up to 100 times faster than with traditional CAD.



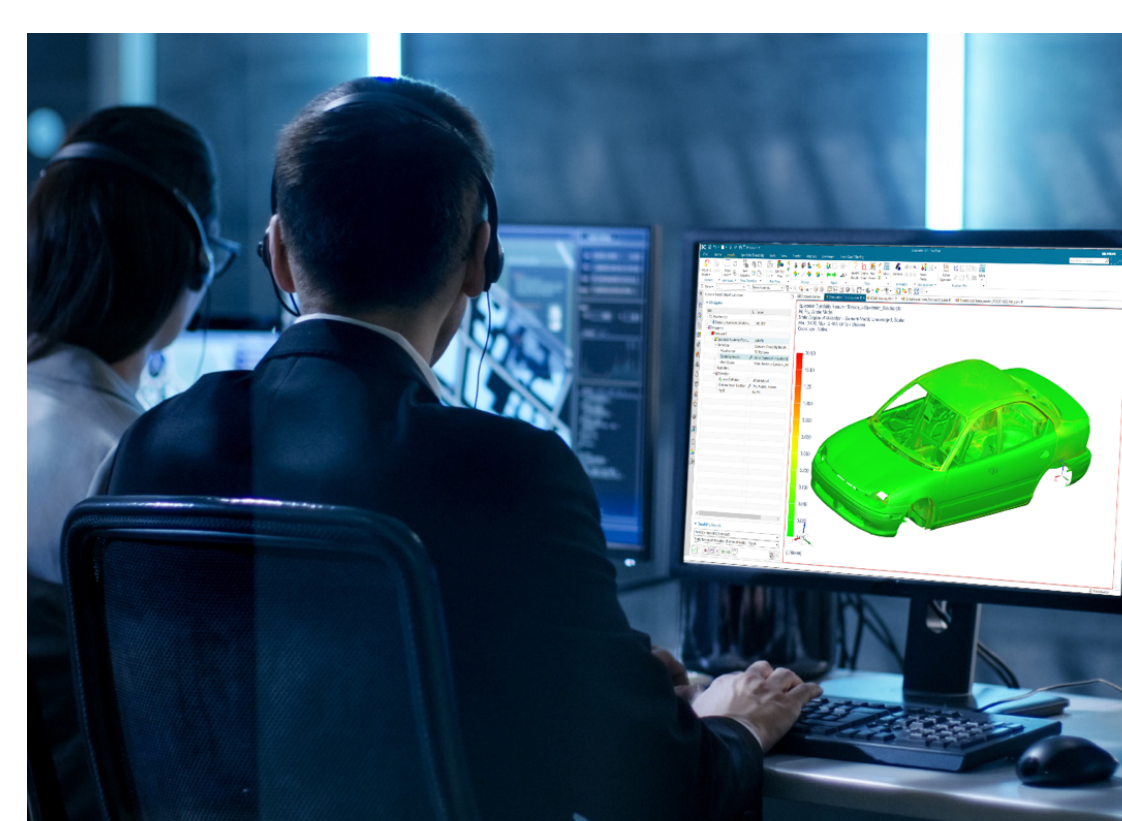
2D to 3D Ease

Solid Edge has proven successful in helping companies reduce engineering costs through better re-use of 2D and 3D data.



Self Paced Training

Whether getting a new hire up to speed, or advanced learning, Designfusion has an extensive course library.



Simcenter

Simcenter is a full-featured 3D computational fluid dynamics analysis solution built into major MCAD systems