

Cross sections

Longitudinal sections

Ground floor plan



**Menos é Mais Arquitectos / João Mendes Ribeiro Arquitecto**

Francisco Vieira de Campos, Cristina Guedes, João Mendes Ribeiro

**The *Arquipélago* - Contemporary Arts Centre** seeks to unite the different scales and times of its parts. It is a multidisciplinary project whose mission is to disseminate, create and produce emerging culture: a space of exchange and interface for people, knowledge and events.

The design maintains the industrial character and highlights the dialogue between an existing building (former factory of alcohol and tobacco) and the new construction (arts and culture center, storage facilities, multipurpose hall / performing arts, laboratories, artist studios).

The project of the *Arquipélago* does not exaggerate the differences between the old and the new buildings. On the contrary, it seeks to unite the different parts through a pictorial manipulation of the form and materiality of the buildings – the existing constructions are marked by the volcanic stone masonry and the new buildings are characterized by an abstract form, without reference or allu-

sion to any language, built in concrete with local basalt continuously working with the variation of surfaces' textures, complementing the mass of the buildings with the emptiness of the patios.

The design is committed to the quality of what exists showing the typological variations – new buildings are placed next to the existing ones in a serene manner – underlining the architectural memory of a given period and the new addition, without damaging or subverting the spatial and constructive structures of the whole. Context and continuity contribute to the autonomy of the object. The new program reinvents the existent building.

**The *Arquipélago* - Contemporary Arts Centre** adds meaning to the social and cultural context where it is built.

A new Public Space is materialized in a central square where art feels comfortable and blurs the frontiers between private and public spheres, leisure and work, art and life.

Ribeira Grande, Azores, Portugal

Commission date: 2007

Construction dates: 2011-2014

Client: DRAC of the Regional Government of the Azores

Gross floor area: 12,914 m<sup>2</sup>Cost/m<sup>2</sup>: 790 €/m<sup>2</sup>

"Its expression is committed to its civic destiny and serene quality, showing typological variations, allowing the spatial, functional and constructive structures as a whole, and manipulating form and materiality between former volcanic stone masonry and new concrete forms with inert local basalt."

João Belo Rodela



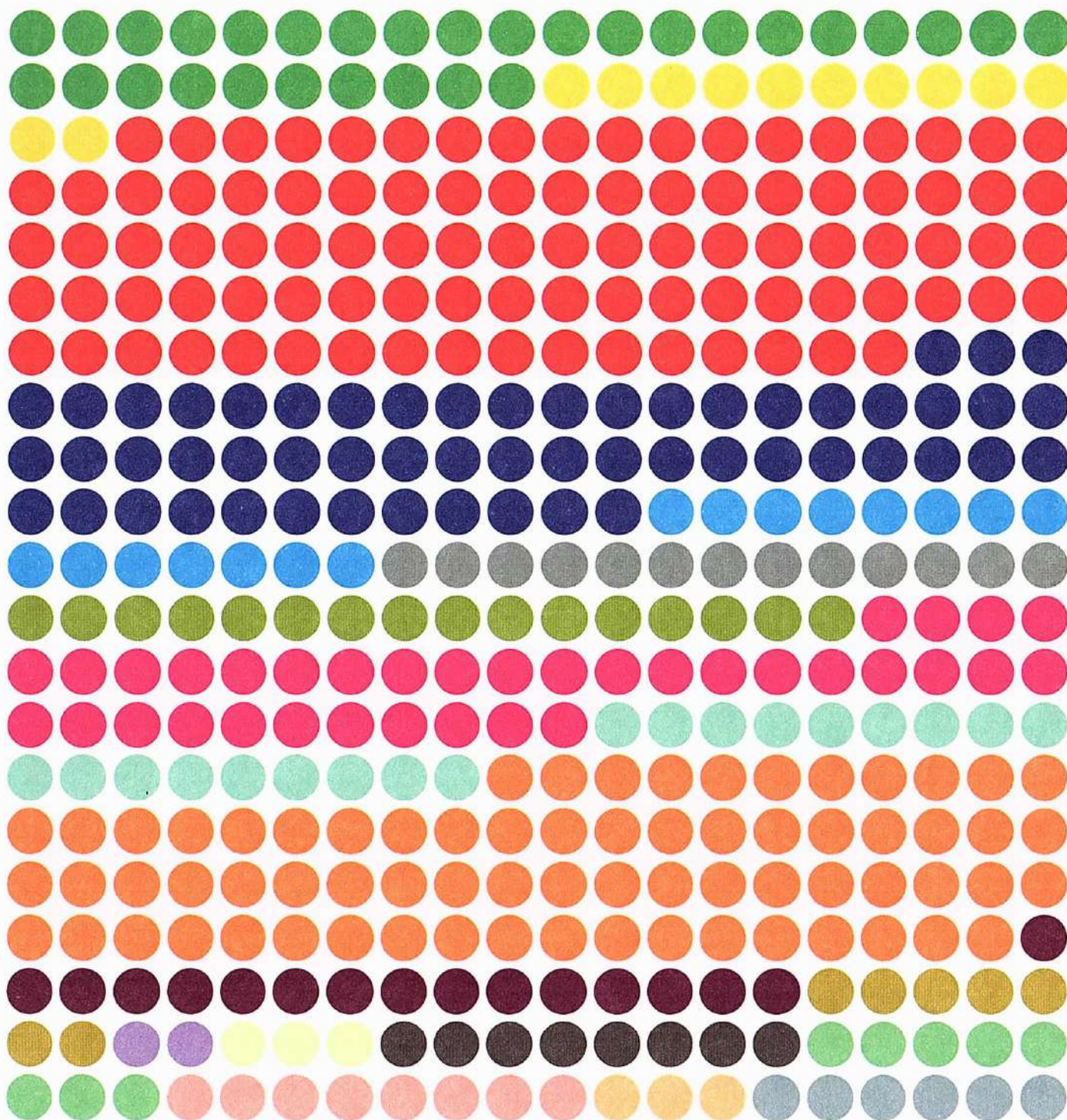


# 420

EUROPEAN UNION PRIZE  
FOR CONTEMPORARY  
ARCHITECTURE



MIES VAN DER ROHE  
AWARD 2015



SHORTLISTED & NOMINEES



# EUROPEAN UNION PRIZE FOR CONTEMPORARY ARCHITECTURE



## MIES VAN DER ROHE AWARD 2015



**fundació  
mies van der rohe  
barcelona**



**Creative  
Europe**