

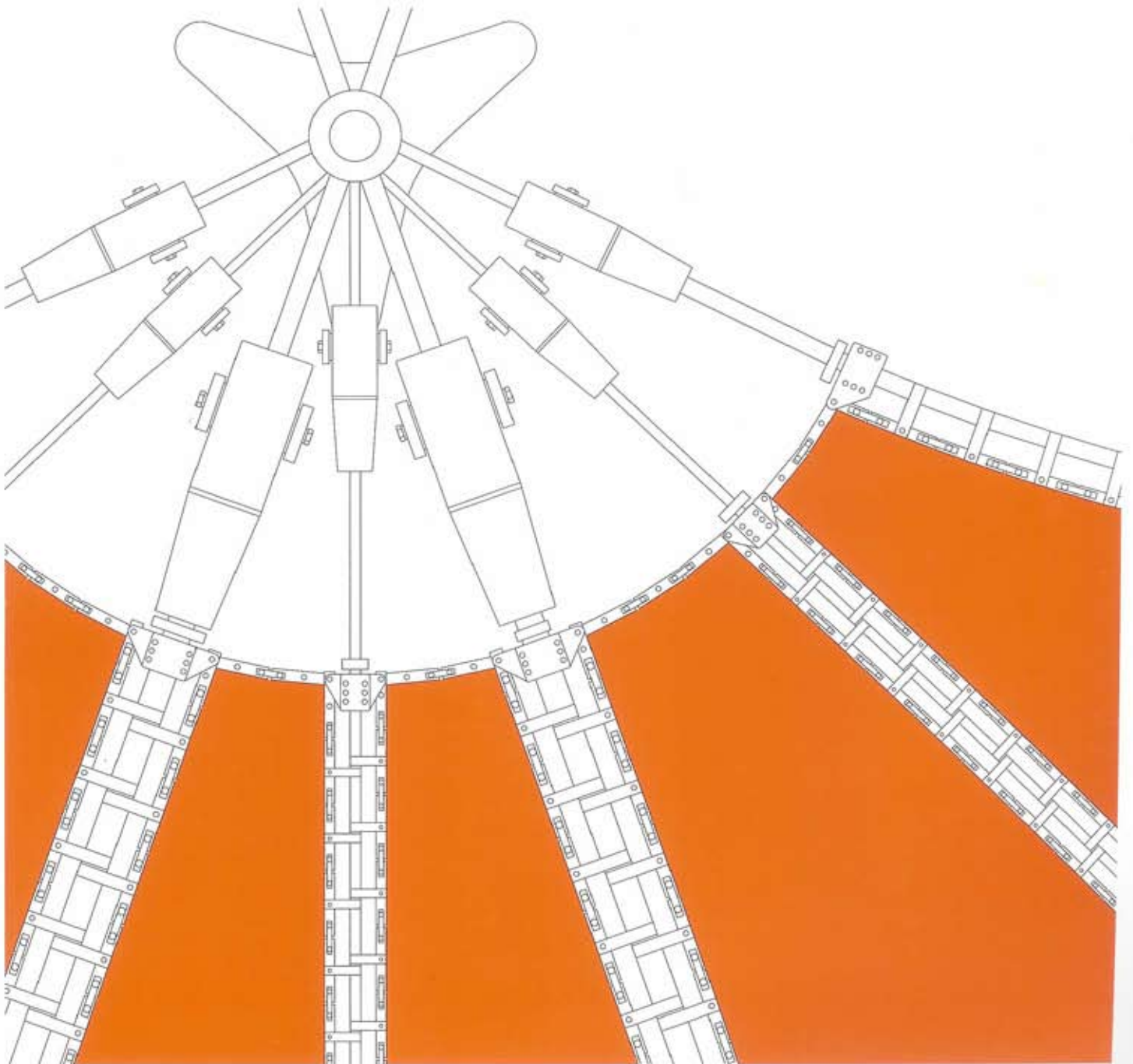
ISSN 1614-4600 · JAN · FEB
£12.50 · US\$24.50 · €18

50
years

English Edition

DETAIL

Review of Architecture and Construction · Lightweight Construction · Vol. 2011 · 1



Bar in Vila Nova de Gaia

Architects:

Menos é Mais, Porto
Cristina Guedes, Francisco Vieira
de Campos

Team:

Antonio Ferreira, Luís Campos

Structural engineers:

Alipio Guedes, Mota Freitas,
Miguel Guimarães, Alexandra Feliz, Porto

Others involved in the project: see page 109

 video: www.detail.de/plus
www.detail.de/plus_english

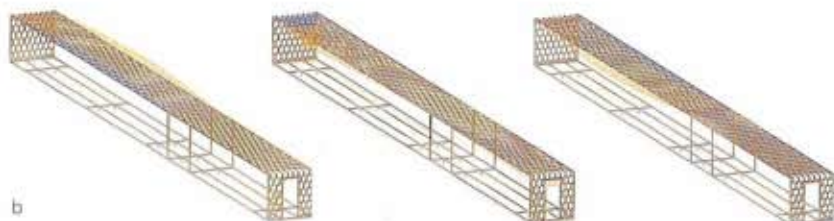
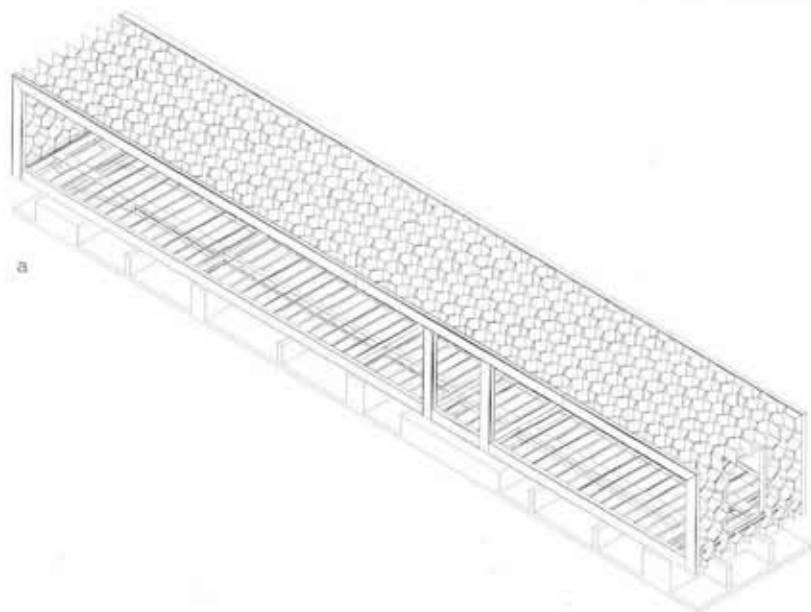
"Ar de Rio" is the newest of a number of bar pavilions situated along the banks of the Douro with a view towards the historic city centre of Porto. Every couple of years, the architects design a new addition to the ensemble. Named "Bares de Gaia", the set of bar pavilions comprise compact steel structures with emphasis on standardization, mobility, simplicity, and efficiency. All pavilions follow the basic principle of minimal use of design elements and simple means of construction. This led to an overall standardization similar to a building block system comprised of modules that can be combined freely. Transporting the individual elements to the site was a central aspect of the de-

sign process. After the first modules began service, the architects developed the system further in relation to user wishes. They designed an extension module that was intended to increase the kitchen area and could simply be added on. Eventually, a new addition for "Ar de Rio" was requested – a terrace that could be closed and used throughout the year. This resulted in the development of a new kind of pavilion module. Its structural system, a longitudinal frame made of honeycomb-like welded steel panels, spans the length of the module and captures the sensational view towards the river and the city. Only 40 cm strong, it spans the entire room length of 24 m. The

honeycomb structure creates a continuous play of light and shadow in the interior space, where the precise, regular structure unfolds its manifold power of expression, depending on vantage point. Its vivid contrast of mass and lightness maintains a visual coherence among all pavilions. The building envelope is comprised of a continuously glazed surface. Via sliding rails, the room height glazing can be opened to the exterior. Depending on climatic conditions, the space protects its users from the weather or opens itself on warm days towards the river and enriches the overall expression of the other modules with its interplay of openness and enclosure.



a structural system
b deformation studies

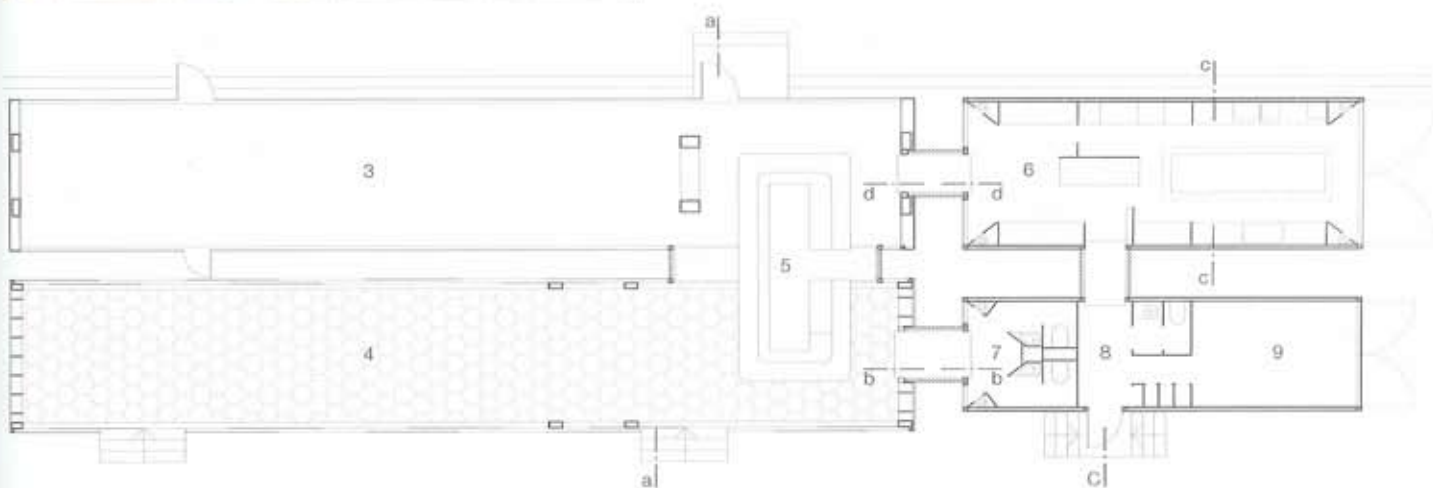


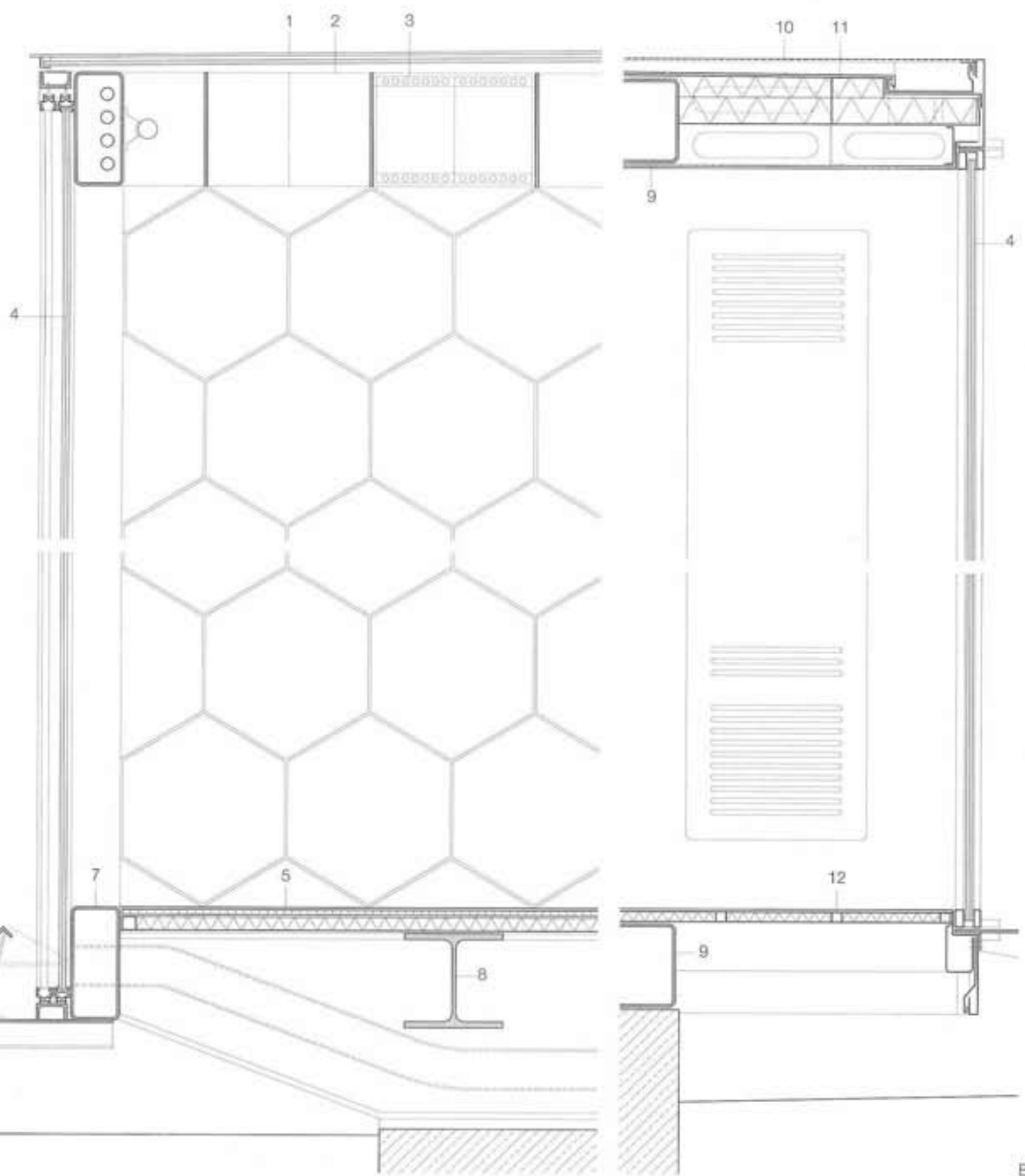
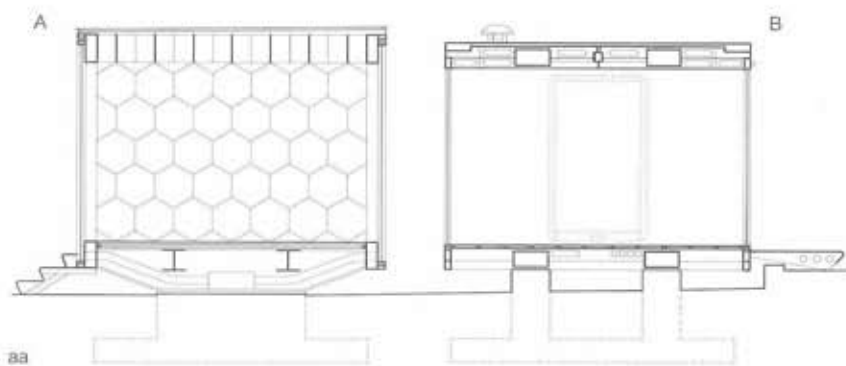


Site plan
scale 1:4000
Floor plan
scale 1:200
Isometric illustrations

- 1 Bar "Ar de Rio"
- 2 Bar "Cálem"
- 3 Guest room
- 4 Terrace area
- 5 Bar

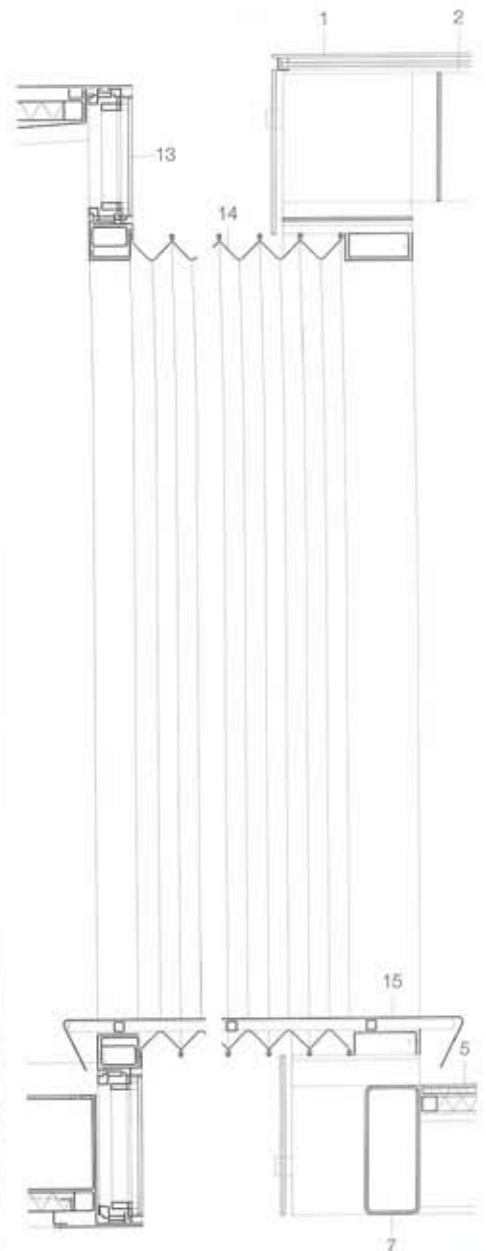
- 6 Kitchen
- 7 Guest restrooms
- 8 Employee wardrobe and bathrooms
- 9 Utility/storage





- | | |
|--|---|
| <ul style="list-style-type: none"> 1 sun protection glazing:
8 mm toughened glass + 12 mm cavity +
12 mm laminated safety glass 2 5 mm structural steel sheet metal, galvanized 3 photovoltaic element for LED light fixture 4 20 mm laminated safety glass 5 aluminium sheet metal 30 mm particle board 40/40/2 mm steel SHS framing 40 mm thermal insulation 1 mm steel sheet metal, galvanized 6 staircase, 6 mm aluminium sheet metal, canted
retractable for facade operation 7 350/150/6 mm steel RHS, galvanized | <ul style="list-style-type: none"> 8 300 mm steel I-beam 9 450/250/6 mm steel RHS, galvanized 10 4 mm steel sheet metal, perforated, galvanized 11 1 mm roof panel, steel sheet metal, galvanized
80–130 mm thermal insulation
10 mm hung MDF panel, black finish 12 rubber flooring on
4 mm stainless steel sheet metal
30/30/2 mm steel SHS framing
30 mm thermal insulation
1 mm steel sheet metal, galvanized 13 10 mm toughened glass, mirror finish 14 door reveal, nappa leather 15 3 mm stainless steel sheet metal, slip resistant |
|--|---|

Vertical sections
scale 1:100
Detail sections
scale 1:20



bb

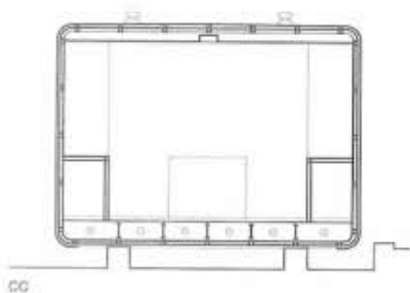


Sections scale 1:100

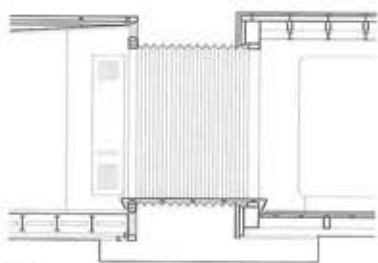
Detail scale 1:10

- 1 4 mm aluminium sandwich panel
40/36/3 mm framing,
aluminium profile
- 1 mm steel sheet metal, galvanized
- 50 mm thermal insulation
- 1 mm steel sheet metal, galvanized
- 2 50/50/1.5 mm steel SHS, galvanized
- 3 door leaf
- 4 mm aluminium sandwich panel
- 2 mm steel sheet metal, galvanized
- 80 mm thermal insulation
- 2 mm steel sheet metal

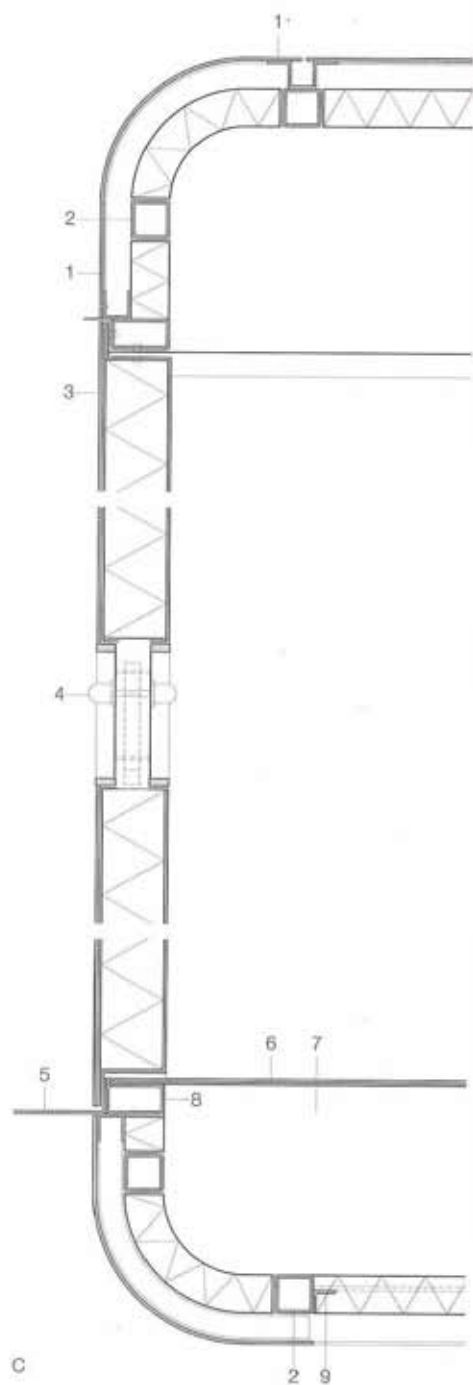
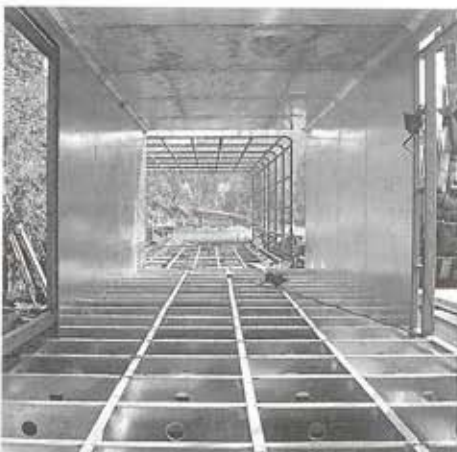
- 2 mm stainless steel
sheet metal
- 4 door hardware, stainless steel
- 5 3 mm stainless steel sheet metal,
slip resistant
- 6 4.5 mm natural rubber flooring
- 3 mm stainless steel sheet metal
- 7 bulkhead panel:
3 mm steel sheet metal,
galvanized
- 8 80/40/1.5 mm steel RHS
- 9 30/30/1.5 mm steel angle, galvanized



cc



dd



C