



INAPAL Metal Industrial Unit, Palmela, Portugal, 2006. This facility, dedicated to the production of metal components for the automobile industry, is composed of two volumes. One volume consists of two wings and a cantilever that combine material storage and production units; the other consists of two floors for the technical and social programs. One unique surface material—trapezoidal metal cladding—is used in two ways: revetment sheet for the closed spaces, and honey-comb-shaped cut metal-sheet for the spaces that require regulated light and ventilation.

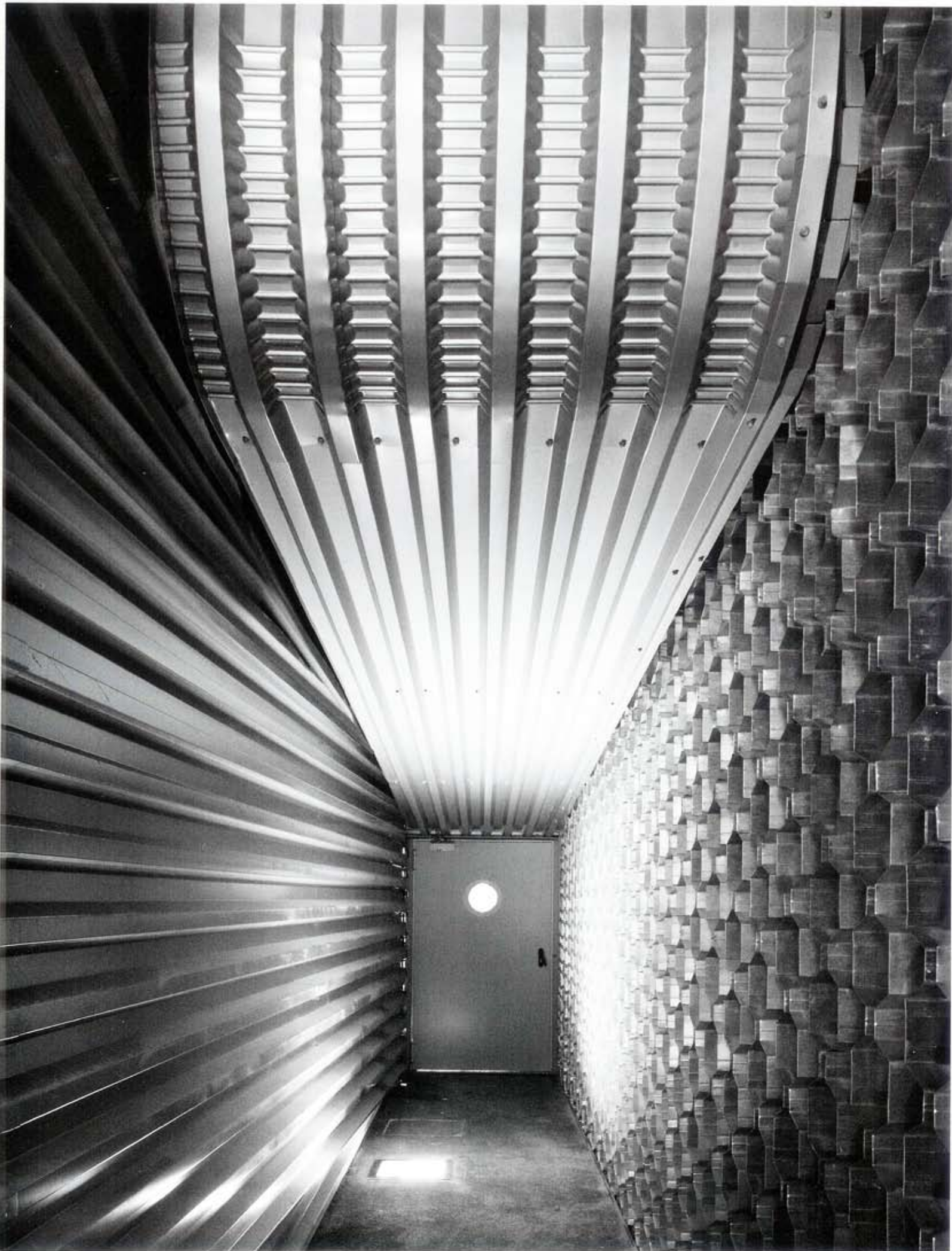


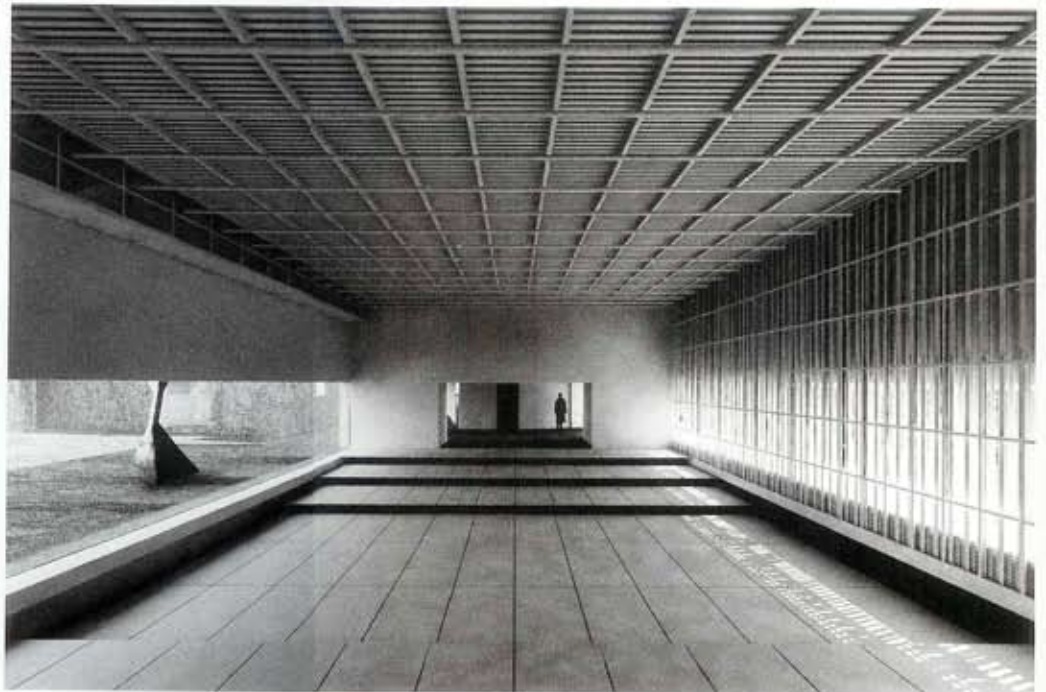
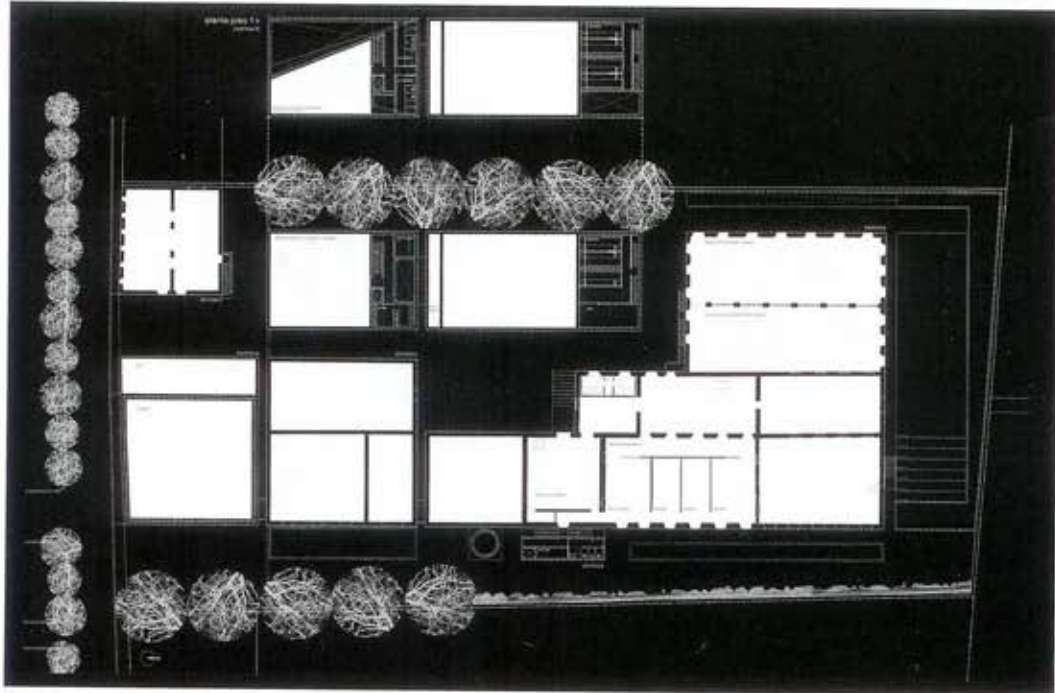
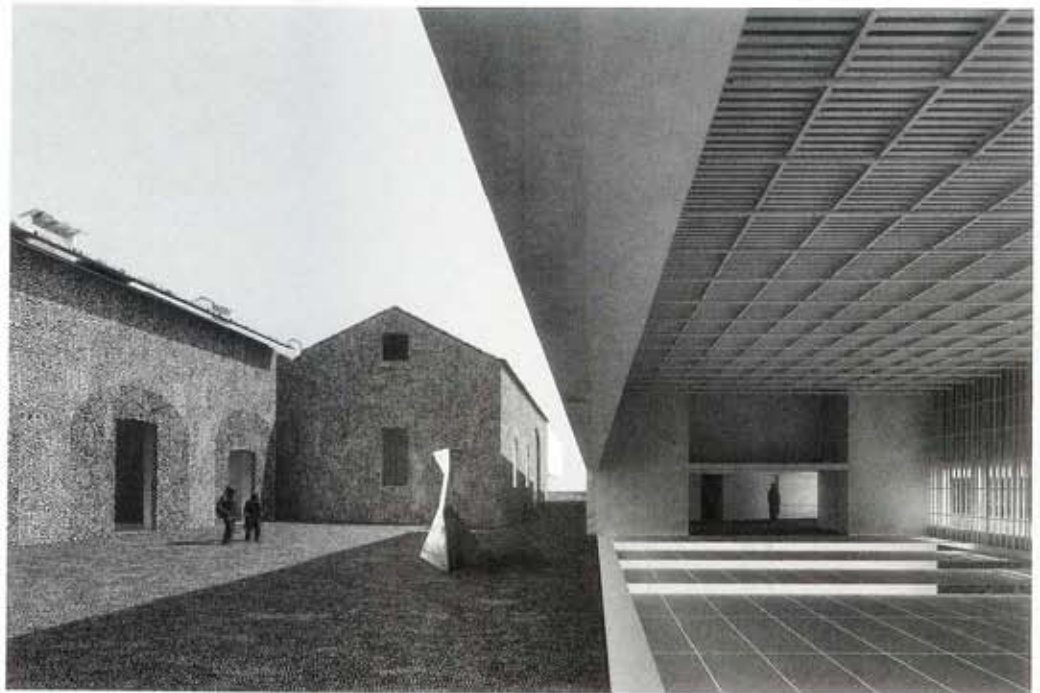
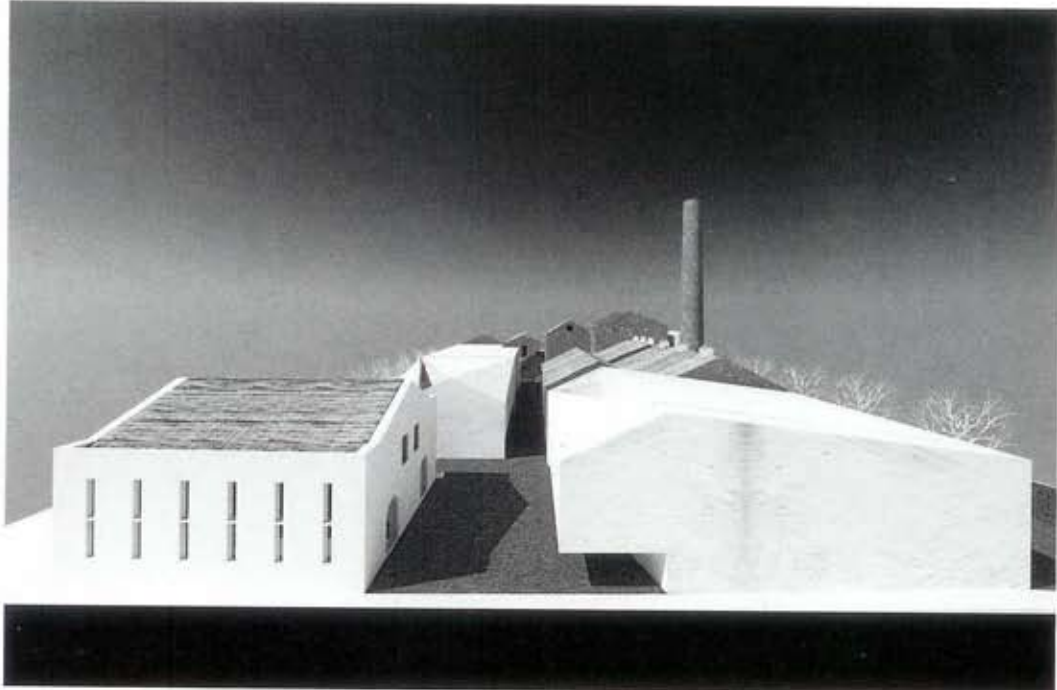
If it is possible to define a unified "School of Porto" style among Portuguese architects, then Cristina Guedes and Francisco Vieira de Campos would seem to have developed from it, alongside iconic figures of contemporary Portuguese architecture. Guedes worked with Álvaro Siza in the early 1990s, while during the same period Vieira de Campos worked in the office of Eduardo Souto de Moura. In 1994 they founded their firm, also known as Menos é Mais (Less is More). While the work of the two architects reflects the minimalism that is conventionally identified with Porto architects, they have been especially interested in creating a rapport with existing buildings and specific places, but starting from an approach attuned to developments in the European avant-garde rather than local traditions.

A distinctive feature of Guedes + de Campos's work is their attempt to define an expressive vocabulary, which is reflected in an economy of means, standardized dimensions, clean lines, and lightness. A marked interest in experimental building through the use of new materials and prefabrication systems is accompanied by precision of design, abstraction in the composition, and meticulous control of detail. These working methods first appeared in the pavilion-like bars erected on the banks of the river at Vila Nova de Gaia (1999–2002).

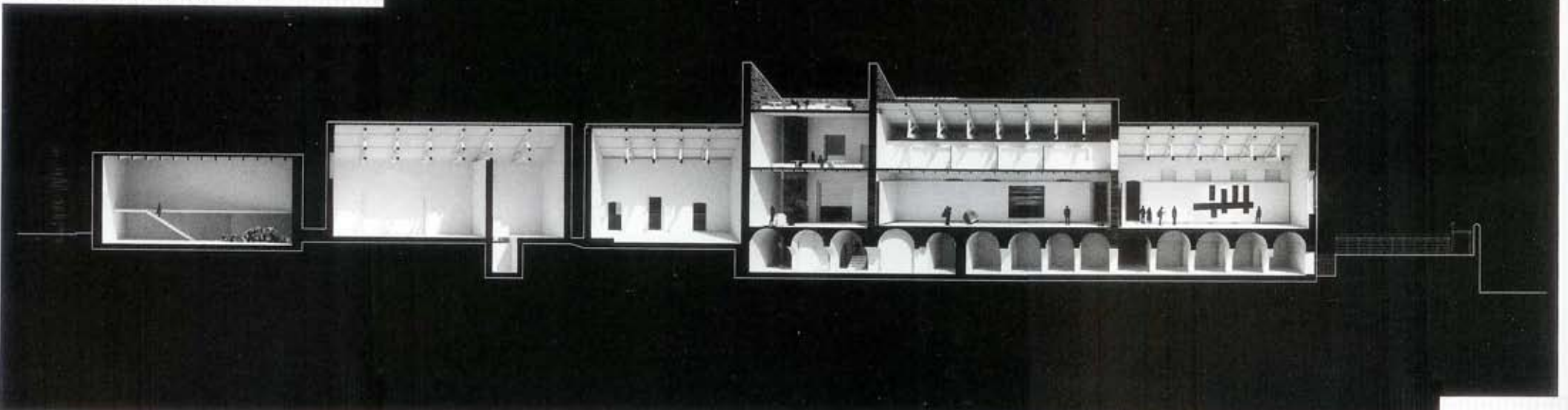
They were taken further in the INAPAL facility for the manufacture of metal automobile components. Here the architects' conceptual approach focused on the definition of the envelope through the adoption of a unifying facade material (trapezoidal metallic sheets) applied in different ways depending on need and orientation. Inspired by the aerodynamic imagery of automobile design, the architects created a refined aesthetic based in a rigorous study of building procedures. In their design strategy, the first idea often contains the final concept. But as soon as they have fixed the ground rules for a project, they attempt to disrupt them by means of subtle gestures that contain the possibility of transformation.

In the Quinta do Vallado Winery (under construction) they create a respectful dialogue with the topography without subordinating the new architecture to it. The compositional matrix of the project establishes a close relationship with the landscape, reconciling technical and productive requirements with the ancient vaulted structure. In the Azores Contemporary Art Center, also under construction, the impact of the addition lies in the measured contrast between irregularity and volumetric clarity, the solids of the walls and the voids of the courtyards, the textures and colors of the surfaces, the opposing perceptual qualities evoked by the subtle interplay of light and shade. // Mercedes Daguerre

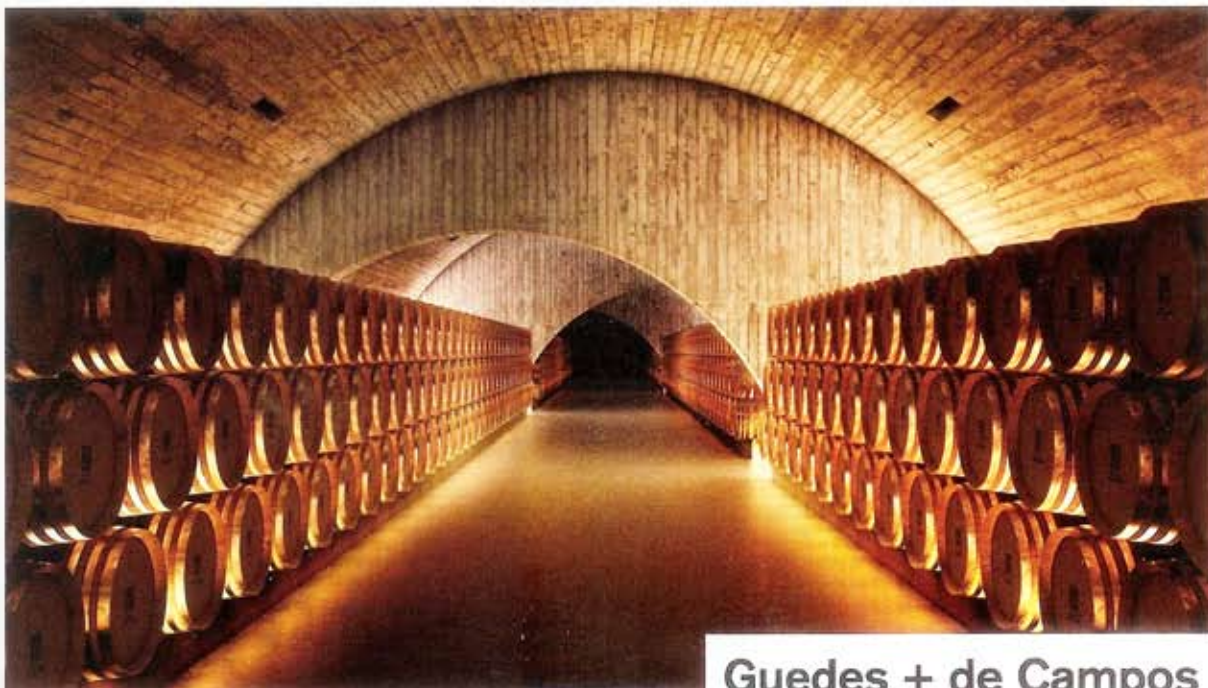
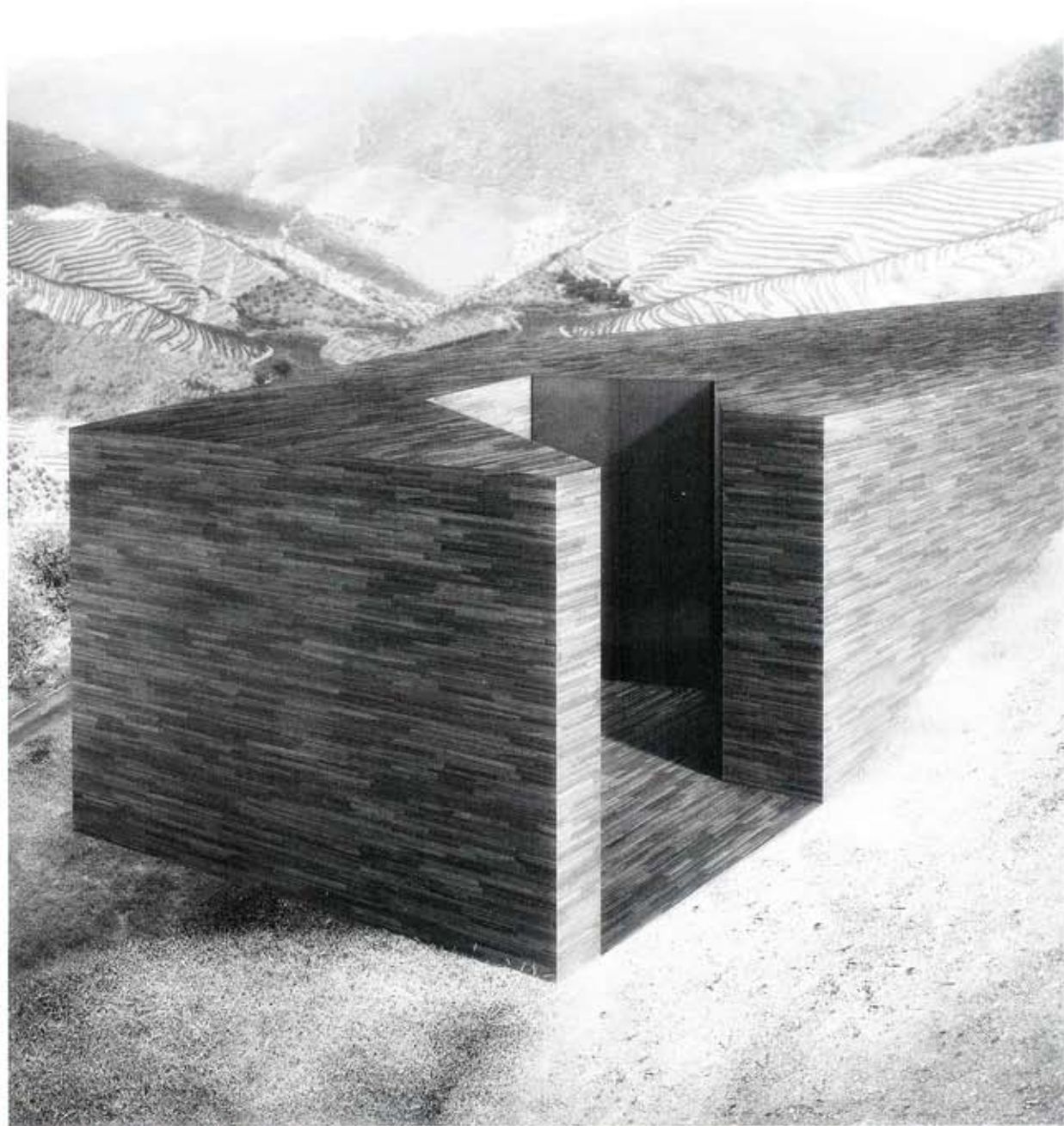
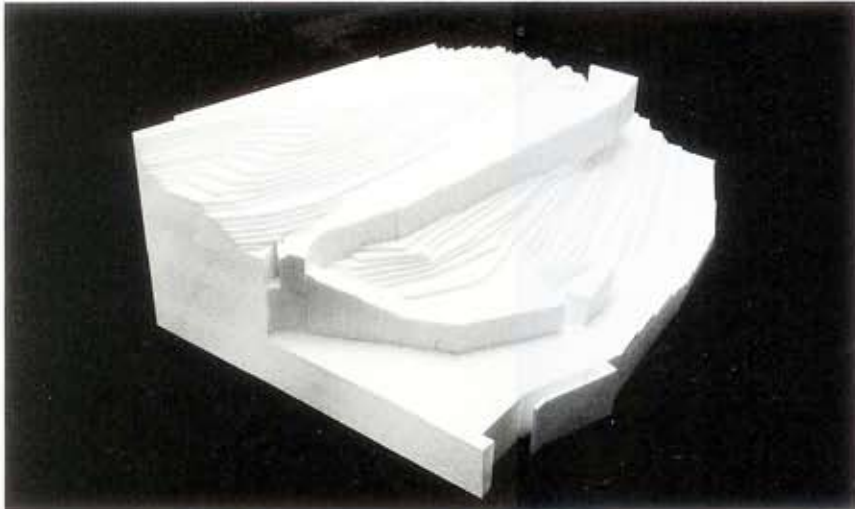
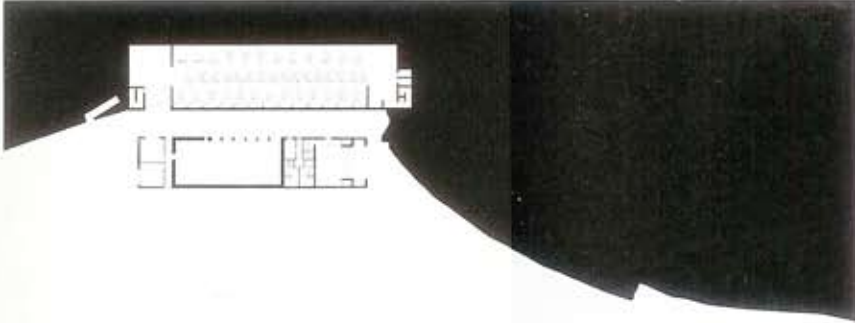




Azores Contemporary Art Center, Ribeira Grande, Portugal, 2007-
 The new art center prompts a dialogue with the site's former alcohol and tobacco factory. The different scales and shapes of the buildings are reflected in the contrast between the volcanic stone of the old building and white mortar of the new buildings.



Quinta do Vallado Winery, Peso da Régua, Portugal, 2006-. This project includes the renovation of the existing winery buildings and construction of new buildings: a fermentation warehouse, and a barrel and reception warehouse. The enlargement of the winery calls for building on a pronounced slope. The project at once blends into the landscape and affirms its artificial nature.



Guedes + de Campos