

PRO NATURE

SOLID.
DURABLE.
NATURAL.

**PRO
NATURE**

Root your projects in nature.

Create spaces that help to refocus the mind and re-energise the spirit, turning them into rewarding and positive places.

In PRO NATURE you will discover elegant flat-woven wall-to-wall carpet inspired by the natural and fibrous texture of real bark. Welcoming and with a structure that creates more quiet spaces, these floors support our well-being, with a balance that makes them the perfect match for all interior settings.

Choose to bring nature into commercial spaces.

 **balta**



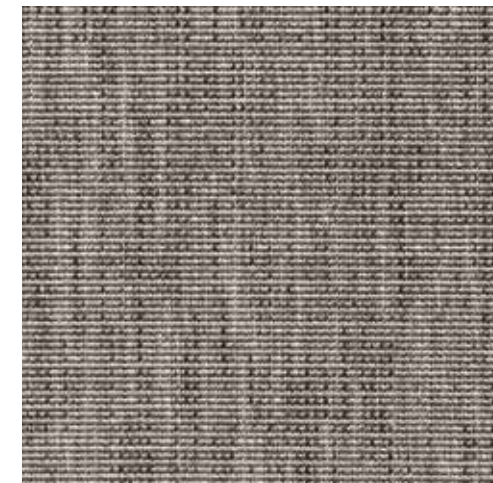
SALIX 6302 80



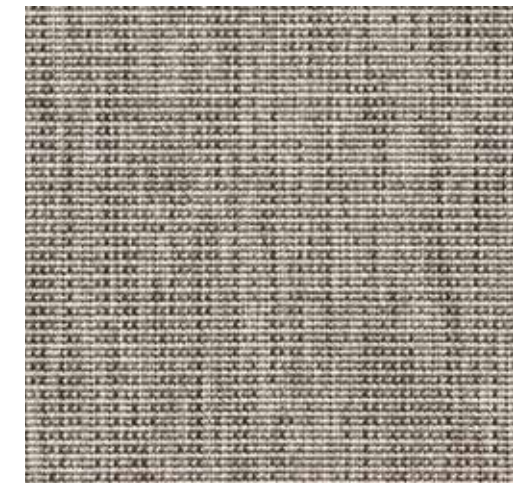
SALIX



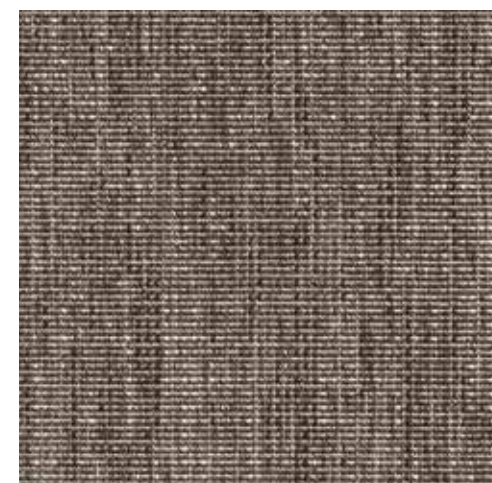
SALIX 6302 98



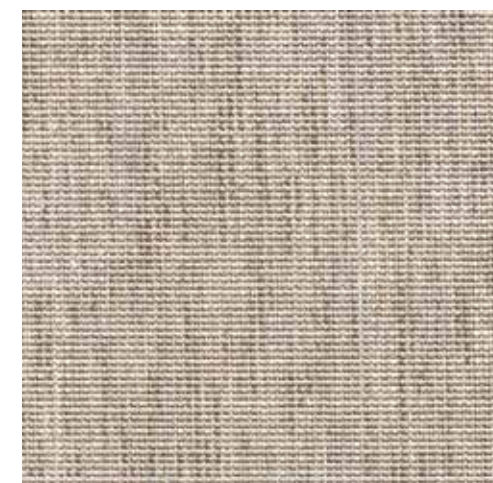
SALIX 6302 95



SALIX 6302 92



SALIX 6302 80

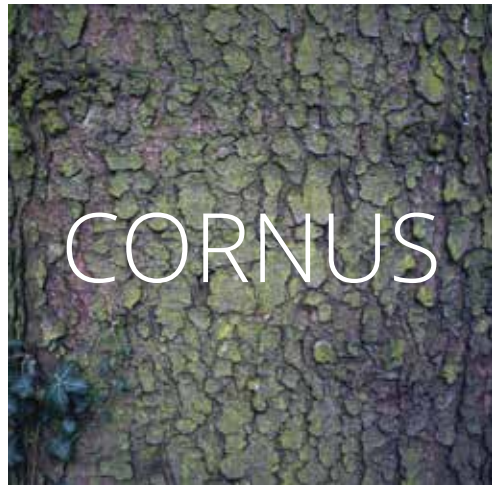


SALIX 6302 78



SALIX 6302 68

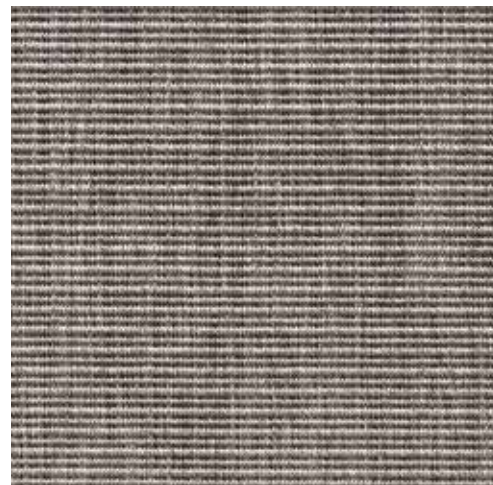
PRO NATURE



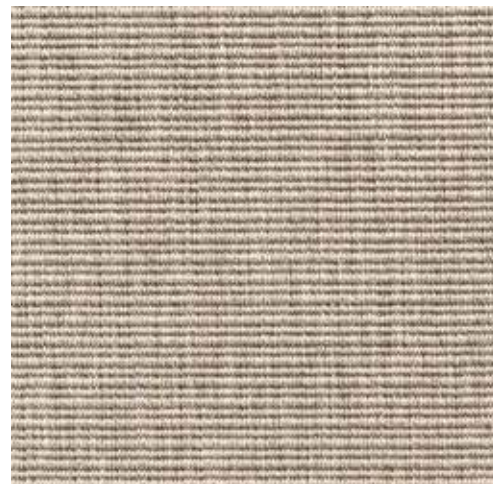
CORNUS 6339 98



CORNUS 6339 80

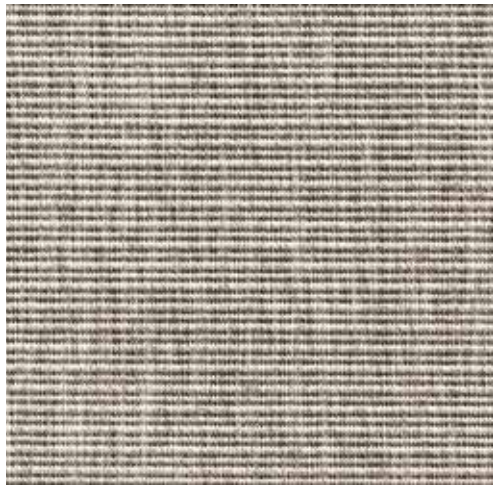


CORNUS 6339 95



CORNUS 6339 78

PRO NATURE



CORNUS 6339 92



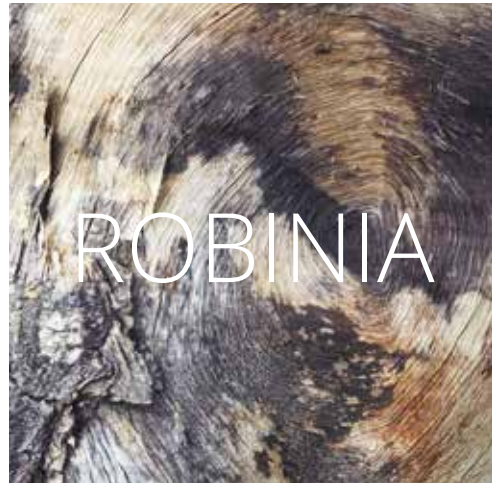
CORNUS 6339 68



CORNUS 6339 95



ROBINIA 6300 98

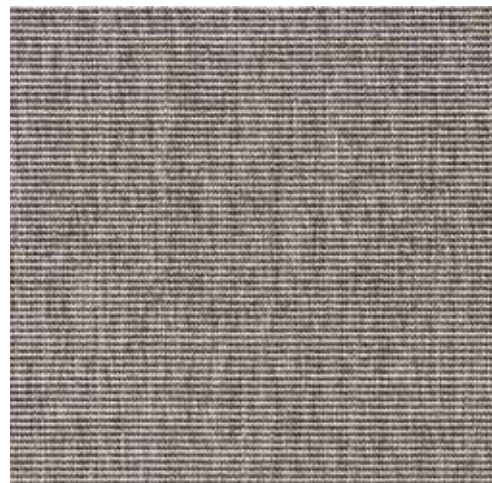


ROBINIA

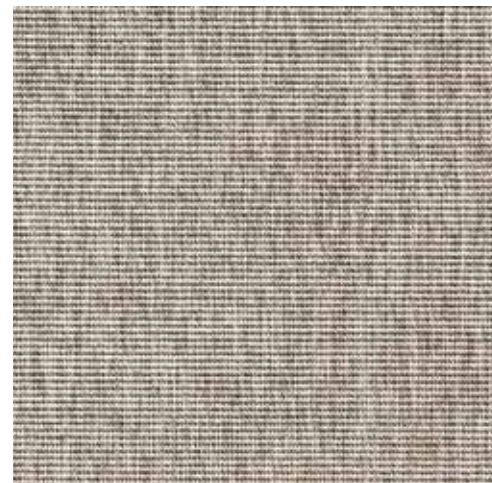
PRO NATURE



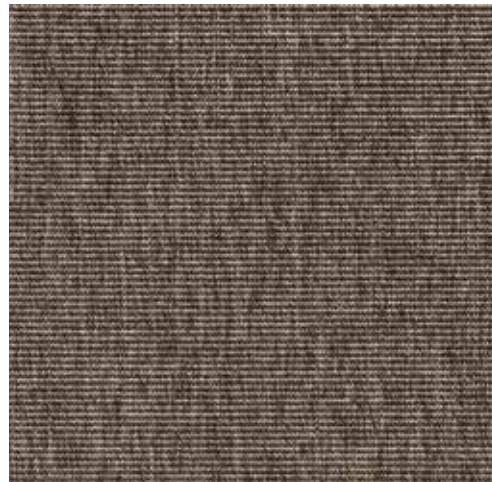
ROBINIA 6300 98



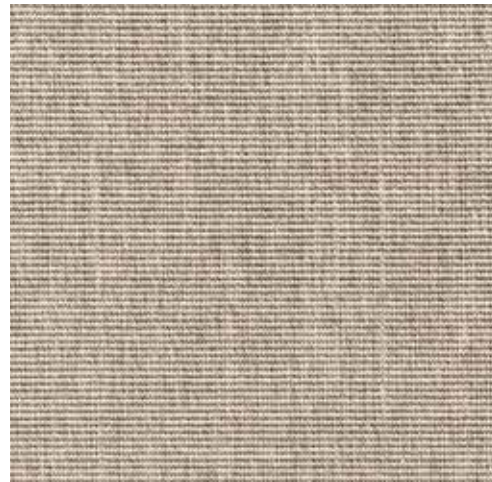
ROBINIA 6300 95



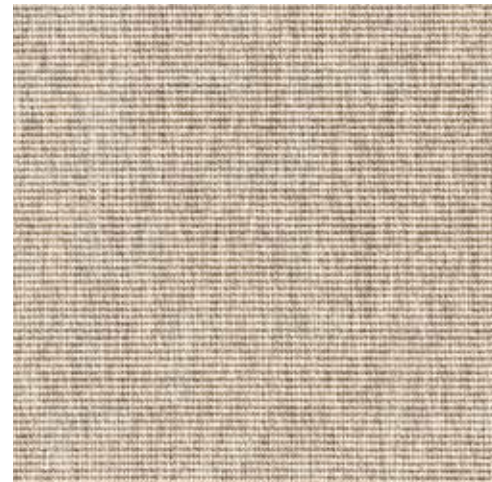
ROBINIA 6300 92



ROBINIA 6300 80



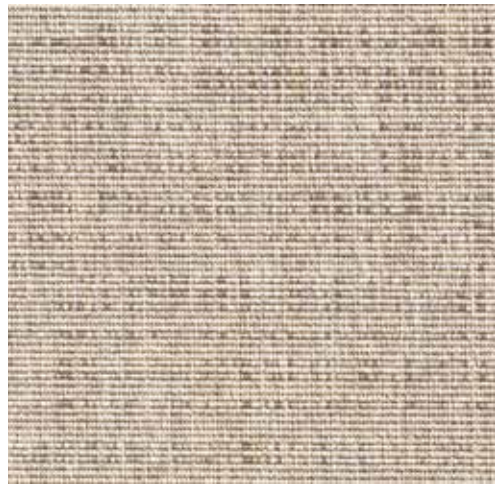
ROBINIA 6300 78



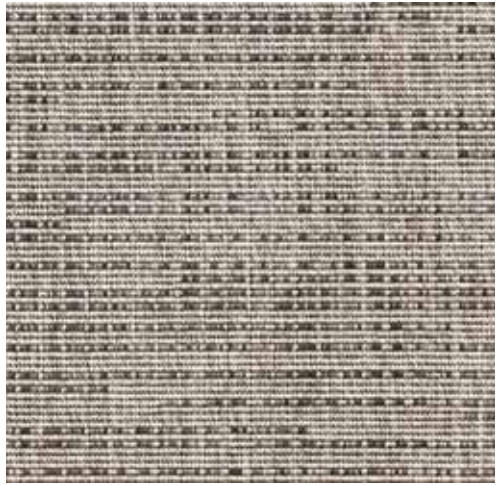
ROBINIA 6300 68



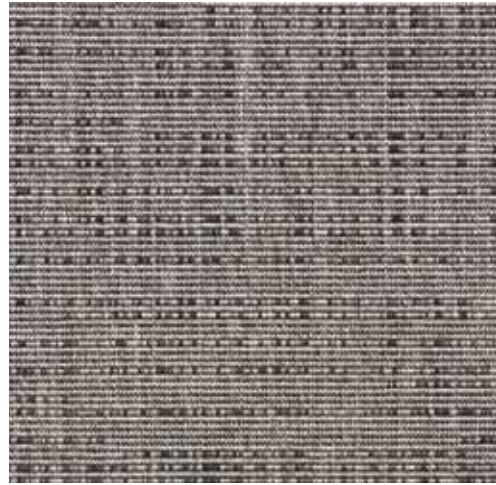
PRO NATURE



BETULA 6335 68



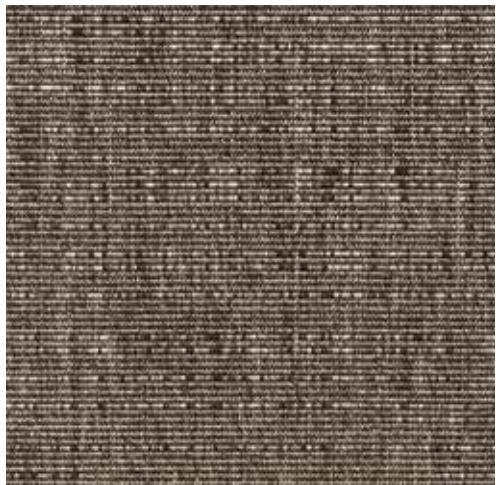
BETULA 6335 92



BETULA 6335 95



BETULA 6335 78



BETULA 6335 80



BETULA 6335 98



BETULA 6335 68



SALIX



CORNUS

HOW WILL YOU
INVIGORATE
YOUR SPACE?



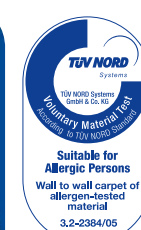
ROBINIA



BETULA

PRO NATURE

Manufacturing process	Flat woven
Pile content	100% PP Stainsafe®
Pile weight	ca. 1.100 gr/m ²
Total weight	ca. 1.635 gr/m ²
Total height	ca. 5,4 mm
Number of knots	ca. 70.400/m ²
Width	400 cm +/-2%
Light fastness	ISO 105-B02 ≥ 7
Water resistance	EN ISO 105-E01 ≥ 4-5
Saltwater resistance	ISO 105-E02 ≥ 4
Thermal resistance	ISO 8302: 0,052 m ² K/W
Sound insulation	ISO 140-8: 18 dB
Fire resistance	EN 13501-1 : C _{FL} -s1 (fully adhered) 0493 - CPR - 0170 ASTM E648-08 : Class 1 (fully adhered)
Fitting & Maintenance	www.naturecarpet.com



05/19 All rights reserved to alter technical specifications

Ready to create re-energising spaces?
Let's talk!

info@baltagroup.com



**PRO
NATURE**

www.naturecarpet.com

 **balta**
carpets

version 05/19