



## **THE MEMO: 8**

Commercial and Industrial LED Lighting  
Product Catalogue April 2023









# The UK's leading LED lighting solutions specialist

Novah have been working with LED technology for 25 years, initially in signage and since 2005 with LED lighting.

We have electrical engineering expertise throughout the business so we understand the requirements of the lighting industry, from safety, installation and performance perspectives.

Our dedicated technical sales team will be able to help you with any queries and are waiting for you to get in contact with them.

# CONTENTS

LOW/HIGH BAYS	4
	
LINEAR HIGH BAYS	6
	
FLOODS	8
	
LINEAR BATTENS	10
	
NON-CORROSIVE LINEAR FITTINGS	11
	
EXTREME ENVIRONMENT PRODUCTS	12
	
PANELS	13
	
UTILITY AND EMERGENCY	14
	
PROJECT LIGHTING	16
ONYX FLOOD COST COMPARISON ANALYSIS & TESTIMONIALS	18

# EOS LOW/HIGH BAY



LUMEN EFFICIENCY  
140lm/W



LUMEN OUTPUT  
Up to 21000lm



4000k



65



08



WARRANTY  
3YRS

Ideal for installations at height of 6-10 metres, the **Eos** Low/High Bay is easy to install with 1m cable flex and a simple eye loop hook.

It comes with a 3 year warranty and operates at an efficient 140lm/W. Perfect for installations in small warehouses and factories.

## Additional benefits and what's included

- Can be used as either Low Bay or High Bay replacement
- 1m mains cable
- Built in fixing eye loop
- Lightweight
- Highly efficient: 140lm/W
- High quality polycarbonate lens
- Flicker free



Code	Name	Wattage	Lumens	Colour temp.	CRI	IP	Rated	Replacement for
EL100ELB	Eos Low/High Bay 100W	100W	>14000lm	4000K	>70	65	50,000hrs	250W MH/SON
EL150ELB	Eos Low/High Bay 150W	150W	>21000lm	4000K	>70	65	50,000hrs	400W MH/SON

 LUMEN EFFICIENCY  
200lm/W

 LUMEN OUTPUT  
Up to 30000lm

 5000k

 IP 65

 IK 08

 WARRANTY  
5YRS


## SIRIUS IV LOW/HIGH BAY

AIG A



### Available options

 Emergency/  
Self test emergency

 Microwave and PIR on/off  
or single/two stage dimming

 Bracket kit

The Sirius IV has a coveted A-rating for Energy which is THE most efficient high/low bay available in the market. At an astonishing 200lm/W the Sirius IV will be around 25% cheaper to run than equivalent luminaires.

The all new Graphene heatsink ensures that the LEDs stay cool and don't lose their brightness over the lifetime of the product.

**sirius<sup>IV</sup>**  
LED LOW/HIGH BAY

### Additional benefits and what's included

- Low bay beam angle 90°
- High bay beam angle 60°
- Flicker free
- LM90≥51,000hrs
- 1.5m mains cable
- Eye loop mounting hook

Code	Name	Wattage	Lumens	Colour temp.	CRI	IP	Rated	Replacement for
EL80SFLB4	Sirius IV 80W 90° Low/Highbay 200lm/W	80W	>16000lm	5000K	>70	IP65	50,000hrs	150W LED (@100lm/W) 100W LED (@150lm/W) 250W MH/Sodium
EL80SHB460	Sirius IV 80W 60° Low/Highbay 200lm/W							
EL110SFLB4	Sirius IV 110W 90° Low/Highbay 200lm/W	110W	>22000lm	5000K	>70	IP65	50,000hrs	200W LED (@100lm/W) 150W LED (@150lm/W) 400W MH/Sodium
EL110SHB460	Sirius IV 110W 60° Low/Highbay 200lm/W							
EL150SFLB4	Sirius IV 150W 90° Low/Highbay 200lm/W	150W	>30000lm	5000K	>70	IP65	50,000hrs	300W LED (@100lm/W) 200W LED (@150lm/W) 400W MH/Sodium
EL150SHB460	Sirius IV 150W 60° Low/Highbay 200lm/W							

# ATLAS LOW/HIGH BAY



- LUMEN EFFICIENCY  
150lm/W
- LUMEN OUTPUT  
Up to 22500lm
- 5000k
- IP 54
- IK 10
- WARRANTY  
5YRS

The **Atlas** Low/High Bay is a powerful and efficient luminaire which is ideal for cost-conscious projects. Robust and quick to install, the Atlas provides excellent value in a competitive market.

## Available options

- Microwave on/off
- Surface mounting kit

## What's included

- Beam angle 110° x 120°
- Flicker free
- LM70>80,000hrs
- Y cable mounting kit
- 1m white mains cable



Code	Name	Wattage	Lumens	Colour temp.	CRI	IP	Rated	Replacement for
EL75ALB	75W Atlas Low/High Bay	75W	>11250lm	5000K	>80	IP54	35,000hrs	250W MH/Sodium lamp or 100W LED (110lm/W)
EL100ALB	100W Atlas Low/High Bay	100W	>15000lm	5000K	>80	IP54	35,000hrs	400W MH/Sodium lamp or 150W LED (100lm/W)
EL150ALB	150W Atlas Low/High Bay	150W	>22500lm	5000K	>80	IP54	35,000hrs	>400W MH/Sodium lamp or 200W LED (110lm/W)



LUMEN EFFICIENCY  
**160lm/W**



LUMEN OUTPUT  
Up to **48000lm**



**5000k**



**66**



**10**



WARRANTY  
**7YRS**

## ARTEMIS LINEAR HIGH BAY



### Available options



Emergency



Microwave Dimmable



PIR & Daylight  
harvesting

**artemis**  
LED HIGH BAY

The **Artemis** range is a powerful and stylish solution for racking and industrial areas. Using the latest optical lens technology, Artemis can deliver light exactly to where it is needed, significantly reducing the number of fittings and the amount of energy required to light the space.

The **Artemis** is the most efficient product of its kind and can be used with a range of intelligent solutions to further reduce energy consumption.

### Additional benefits and what's included

- Cable suspended (Standard) or adjustable surface mounting bracket available. (Product Code: AHBSMB)
- 1m mains cable

# ONYX FLOOD



- LUMEN EFFICIENCY **130lm/W**
- LUMEN OUTPUT **Up to 60000lm**
- 5000k**
- IP 65**
- AC INPUT **110V-240V**
- WARRANTY **2YRS**

The 3rd generation **Onyx** flood is our most efficient flood lamp to date, with a high lumen output, sleek and lightweight design, including our unique HydraGasket seal technology. It is easy to install, very cost effective and reliable.

All **Onyx** floods come with a mounting bracket which allows for up to 270° rotation and is pre-flexed with 1m of watertight cable.

The **Onyx** 3rd generation now has a voltage input range of between 110-240V which makes it suitable for both industrial and site lighting.

## Available options

- Marine/Coastal upgrade kit



## Additional benefits and what's included

- 1m mains cable
- Bracketry 270°
- 110-240V AC input
- Lightweight housing
- Low glare toughened glass diffuser
- HydraGasket technology – for complete water ingress protection

Code	Name	AC input	Wattage	Lumens	Colour temp.	CRI	IP	Rated	Replacement for
EL50X3F	Onyx 50W Flood	110V-240V	50W	6500lm	5000K	>70	65	25000hrs	75W HID
EL100X3F	Onyx 100W flood	110V-240V	100W	13000lm	5000K	>70	65	25000hrs	250W MH/SON
EL150X3F	Onyx 150W flood	110V-240V	150W	19500lm	5000K	>70	65	25000hrs	400W MH/SON
EL200X3F	Onyx 200W flood	110V-240V	200W	26000lm	5000K	>70	65	25000hrs	500W MH/SON
EL300X3F	Onyx 300W flood	110V-240V	300W	36000lm	5000K	>70	65	25000hrs	600W MH/SON
EL500X3F	Onyx 500W flood	240V	500W	60000lm	5000K	>70	65	25000hrs	1KW MH/SON



 LUMEN EFFICIENCY  
**150lm/W**

 LUMEN OUTPUT  
Up to **45000lm**

 **5000k**

 **IP 66**

 AC INPUT  
**220V-240V**

 WARRANTY  
**5YRS**

## AVA FLOOD



### Asymmetric light projection

Light projection  
focused where  
required

### Available options

 Marine/Coastal  
upgrade kit

**ava**<sup>TM</sup> **FLOOD**  
LED ASYMMETRIC FLOOD

Our **Ava** range of asymmetric flood lights are both robust and efficient (150lm/W) and feature a 120° x 60° asymmetric beam angle to ensure the light spread is focused where needed, whilst minimising light pollution in the surrounding areas.

All **Ava** floods come with a 5 year warranty, IP66 ingress protection featuring our heavy duty powder coated finish and are supplied with a mounting bracket enabling 270° rotation.

The **Ava** floods are supplied with 1.5m of mains cable for easy installation and include our breathable gasket technology to further extend the life of the chips and driver.

The 300W floods have a wide input voltage range of 110-240V making them suitable for a range of site applications.

**Ava** floods can also be upgraded to coastal marine grade using our upgrade kit.

### Additional benefits and what's included

- 1.5m mains cable
- Low glare diffuser
- Breathable Gasket technology
- Robust housing

Code	Name	Wattage	Lumens	Colour temp.	CRI	IP	Rated	Replacement for
EL50AF	AVA Asymmetric LED 50W Flood Light	50W	7500lm	5000K	>80	66	50000hrs	100W MH/SON
EL150AF	AVA Asymmetric LED 150W Flood Light	150W	22500lm	5000K	>80	66	50000hrs	400W MH/SON
EL300AF	AVA Asymmetric LED 150W Flood Light	300W	45000lm	5000K	>80	66	50000hrs	750W MH/SON

# SOLRAY SELECT LINEAR BATTEN



- LUMEN EFFICIENCY  
Up to **170lm/W**
- SELECTABLE OUTPUT  
**4 LEVELS**
- 4000k**
- IP 20**
- WARRANTY  
**5YRS**

Designed to replace traditional fluorescent tubes and their fittings, these versatile, efficient and easy to install **Solray Select** Linear LED fittings are ideal for use in warehouses, offices, schools and medical centres. The ability to select the light level you require using one of 4 individual settings in one unit makes this a truly unique product, which then makes it easier to set the ideal light levels when on site.

## Available options

- Self test emergency
- Microwave or PIR on/off
- DALI/Mains dimmable

## Additional benefits and what's included

- Flicker free
- Push terminal through wiring
- 4 switchable light level outputs
- CRI >80
- Key slot mounts
- BESA mounts
- Long life aluminium and PC body
- Cable gland



Code	Name	Wattage	Lumens	Colour temp.	CRI	IP	Rated	Replacement for
EL2SR2B	Solray LED Batten 2ft 18W	18W	2160lm	4000K	>85	20	50,000hrs	Twin 2ft T5/T8 Tube
EL4SR2B	Solray Select LED Batten 4ft 20-34W	20-34W	3200lm - 5200lm	4000K	>85	20	50,000hrs	Single/Twin 4ft T5/T8 Tube
EL5SR2B	Solray Select LED Batten 5ft 28-48W	28-48W	4500lm - 7200lm	4000K	>85	20	50,000hrs	Single/Twin 5ft T5/T8 Tube
EL5HSR2B	Solray Select LED Batten 5ft High Output 34-58W	34-58W	5800lm - 9300lm	4000K	>85	20	50,000hrs	Twin 5/6ft T5/T8/T10/T12 Tube
EL6SR2B	Solray LED Batten 6ft 64W	64W	9700lm	4000K	>85	20	50,000hrs	Twin 6ft T8/T10/T12 Tube

When ordering, please specify the product variation you are interested in by adding the following suffixes to the product's code.

**D:** DALI Dimmable      **F:** Self Test Emergency      **M:** Microwave On/Off

Example: A Solray Select LED Batten 4ft 22-40W Self Test Emergency + Microwave would be: **EL4SR2BFM** which is **EL4SR2B + F + M**

Note: any additional codes to be added in alphabetical order.



LUMEN EFFICIENCY  
Up to **170lm/W**



SELECTABLE OUTPUT  
**4 LEVELS**



CLR TEMP. LEVELS  
**4000/5000/6500k**



**66**



**08**



WARRANTY  
**5YRS**



### Available options



Self test emergency



Microwave on/off



DALI/Mains dimmable

**barracuda** **SELECT**  
LED NON-CORROSSIVE LINEAR FITTINGS

The **Barracuda Select** now offers selectable light output *and* colour temperature. This is the most versatile linear non-corrosive on the market offering a solution for every application.

The **Barracuda Select** has a prismatic diffuser which makes it low-glare and particularly suitable for low ceilings such as car parks.

The **Barracuda Select** is very easy to install, with piano-key terminal blocks and easy knock-outs in the housing.

### Additional benefits and what's included

- 4 selectable light level outputs
- 3 selectable colour temperature options 4000K, 5000K or 6500K
- CRI >80
- Push terminal through wiring
- Stainless steel mounting brackets and clips
- Cable gland and bung

Code	Name	Wattage	Lumens	Col temp.	CRI	IP	Rated	Replacement for
EL2BNC3	Barracuda Tri Colour 2ft 18W	18W	2400lm	4000/5000/6500K	>85	66	>50,000hrs	Twin 2ft T5/T8 Tube
EL4BNC3	Barracuda Select Tri Colour 4ft 20-35W	20-35W	3200-5100lm	4000/5000/6500K	>85	66	>50,000hrs	Single/Twin 4ft T5/T8 Tube
EL5HBNC3	Barracuda Select Tri Colour 5ft 29-52W	29-52W	4900-8000lm	4000/5000/6500K	>85	66	>50,000hrs	Single/Twin 5ft T5/T8 Tube
EL6BNC	Barracuda 6ft 65W	65W	8450lm	4000K	>85	66	>50,000hrs	Twin 6ft T8/T10/T12 Tube



When ordering, please specify the product variation you are interested in by adding the following suffixes to the product's code.

**D:** DALI Dimmable

**F:** Self Test Emergency

**M:** Microwave On/Off

Example: A Barracuda Select Tri Colour 4ft 20-35W DALI with Self Test Emergency would be:

**EL4BNC3DF** which is **EL4BNC3 + D + F**

Note: any additional codes to be added in alphabetical order.



LUMEN EFFICIENCY  
**170lm/W**



SELECTABLE OUTPUT  
**4 LEVELS**



CLR TEMP. LEVELS  
**4000/5000/6500k**



**65**



**08**



WARRANTY  
**3YRS**

## BARRACUDA XTREME NON-CORROSSIVE LINEAR FITTING



**barracuda XTREME**  
LED NON-CORROSSIVE LINEAR FITTINGS FOR EXTREME CONDITIONS

Our brand new **Barracuda Xtreme** range provides robust solutions for both extreme low temperature freezers (down to -35°C) and high temperatures (up to +55°C) – ensuring safe and reliable operation even in the harshest of environments.

Code	Name	Wattage	Lumens	Colour temp.	CRI	IP	Rated	Replacement for
EL1565HTBNC	Barracuda Xtreme High Temp. 5ft 65W Non Corrosive	65W	8450	5000K	>85	IP66	>50,000hrs	Single/Twin 5ft T8 Tube
EL4CTBNC3	Barracuda Xtreme Freezer Select 4ft Non Corrosive	20-36W	3200-5100	4000/5000/6500K	>85	IP66	>50,000hrs	Single/Twin 4ft T8 Tube
EL5CTHBNC3	Barracuda Xtreme Freezer Select 5ft Non Corrosive	29-52W	4500-7500	4000/5000/6500K	>85	IP66	>50,000hrs	Single/Twin 4ft T8 Tube

## SIRIUS XTREME HIGH BAY



**sirius XTREME**  
LED HIGH BAY FOR EXTREME CONDITIONS



LUMEN EFFICIENCY  
**150lm/W**



LUMEN OUTPUT  
**Up to 22500lm**



**5000k**



**65**



**10**



WARRANTY  
**3YRS**

The new **Sirius Xtreme** High Bay is designed to operate in high temperature environments (upto 65°C) with confidence – perfect for manufacturing (food, foundry work etc.) and plant rooms.

Code	Name	Wattage	Lumens	Colour temp.	CRI	IP	Rated	Replacement for
EL150HTSFLB	Sirius High Temp. 150W Low Bay (90° Beam) 22,500 lumens	150W	22500	5000K	>80	IP65	>50,000hrs	250W MH/SON
EL150HTSHB60	Sirius High Temp. 150W High Bay (60° Beam) 22,500 lumens	150W	22500	5000K	>80	IP65	>50,000hrs	400W MH/SON

# HORIZON SELECT LED SELECTABLE CEILING PAN- ELS



The **Horizon Select** range of 600mm x 600mm LED Panels offers superb value for a high output, long life, zero flicker **Tp(a)** LED panel - designed specifically for projects where the highest quality is expected in order to meet demanding technical specification with the flexibility of our selectable light level output. Also available in 1200 x 600mm, as well as a variety of surface mount kits and emergency modules.



LUMEN EFFICIENCY  
Up to **125lm/W**



LUMEN OUTPUT  
Up to **6600lm**



**4000/5000k**



WARRANTY  
**5YRS**

**horizon<sup>TM</sup>SELECT**  
SELECTABLE OUTPUT LED CEILING PANEL

Code	Name	Wattage	Lumens	Colour temp.	CRI	IP	Rated	Replacement for
ELHSPNA	Horizon Select Panel 25-40W 4000K Tp(a) 600mm x 600mm	25W 28W 32W 35W 38W 40W	>2900lm >3300lm >3700lm >3900lm >4100lm >4400lm	4000K	>80	IP20	50,000hrs	Cat2 3 x 18W Fluorescent Tubes or Cat2 4 x 18W Fluorescent Tubes
ELHSPCA	Horizon Select Panel 25-40W 5000K Tp(a) 600mm x 600mm	As above	As above	5000K	>80	IP20	50,000hrs	Cat2 3 x 18W Fluorescent Tubes or Cat2 4 x 18W Fluorescent Tubes
ELHS612PCA	Horizon Select Panel 48-60W 5000K Tp(a) 1200mm x 600mm	48W 50W 52W 54W 56W 60W	>6000lm >6200lm >6400lm >6700lm >6900lm >7300lm	5000K	>80	IP20	50,000hrs	4 x 36W Fluorescent Tubes
EL28HPPN19A	Horizon Ultimate UGR<19 Tp(a) 600mm x 600mm	28W	>3150lm	4000K	>80	IP20	50,000hrs	Cat2 3 x 18W Fluorescent Tubes or Cat2 4 x 18W Fluorescent Tubes



LUMEN EFFICIENCY  
**77lm/W**



LUMEN OUTPUT  
Up to **1800lm**



**3000/4000k**



WARRANTY  
**2YRS**

**ellipse**  
LED ROUND PANELS

## ELLIPSE ROUND PANELS

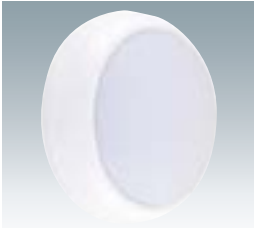


The **Ellipse** range of downlights are slimline, efficient and very simple to install - simply wire directly into the mains and clip into place. This versatile offering looks very attractive with a matt white bezel and an even diffused light

Code	Name	Wattage	Lumens	Colour temp.	CRI	IP	Rated	Replacement for
EL612ED2W	6" 12W Downlight Warm	12W	800lm	3000K	>80	IP20	25,000hrs	26W PL
EL612ED2N	6" 12W Downlight Natural	12W	900lm	4000K	>80	IP20	25,000hrs	26W PL
EL818ED2N	8" 18W Downlight Natural	18W	1400lm	4000K	>80	IP20	25,000hrs	2 x 26W PL
EL1224ED2N	12" 24W Downlight Natural	24W	1800lm	4000K	>80	IP20	25,000hrs	2 x 26W PL or 28W 2D CFL

# HERA UTILITY SOLUTIONS

Novah is happy to offer a range of wallpacks and bulkhead fittings with IP54 and IP65 ratings, as well as a microwave and emergency customised options



**Hera IP54 Utilty Bulkhead Ceiling Light**

LUMENS 1000lm COL. TEMP. 4000k IP RATING IP 54



**Hera IP65 Utilty Bulkhead Ceiling Light**

LUMENS 1300lm COL. TEMP. 4000k IP RATING IP 65



**Hera IP65 Utilty Bulkhead Optional Bezel**

TOOL FREE



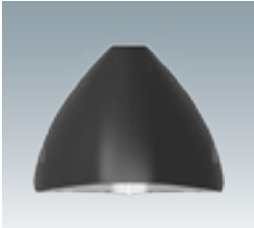
**Hera 1/2 Moon Wallpack Utility Light**

LUMENS >275/330lm COL. TEMP. 4000k IP RATING IP 65



**Hera 22W Wallpack Utility Light**

LUMENS >800lm COL. TEMP. 3/4000k IP RATING IP 65



**Hera Selectable Wall Pack Utility Light**

LUMENS >1840-3920lm COL. TEMP. 3/4000k IP RATING IP 65



**Hera Bollard Dome Head 2 Colour Selectable**

LUMENS >2000lm COL. TEMP. 3/4000k IP RATING IP 65



**Hera Bollard Flat Head 2 Colour Selectable**

LUMENS >2000lm COL. TEMP. 3/4000k IP RATING IP 65



**Hera Bollard Louvre Head 2 Colour Selectable**

LUMENS >875lm COL. TEMP. 3/4000k IP RATING IP 65

# HERA EMERGENCY SOLUTIONS

Novah offer a range Non-Maintained Emergency fittings to help complete any project and adhere to emergency lighting guidelines.



SELF  
TEST

**Hera Bulkhead**

SELF-TEST AVAILABLE IP RATING 65 LUMENS >130/220lm



SELF  
TEST

**Hera High Output Bulkhead**

SELF-TEST AVAILABLE IP RATING 65 LUMENS >1500lm



SELF  
TEST

**Hera Frog Lights**

SELF-TEST AVAILABLE IP RATING 65 LUMENS >300/1000lm



SELF  
TEST

**Hera Recessed Spot Downlight (Open/Corridor Lens)**

SELF-TEST AVAILABLE IP RATING 20 LUMENS 155lm



SELF  
TEST

**Hera Surface Mount Downlight (Open/Corridor Lens)**

SELF-TEST AVAILABLE IP RATING 65 LUMENS >155 lm



SELF  
TEST

**3W Emergency Exit Box - Maintained**

SELF-TEST AVAILABLE LUMENS >140lm WATTAGE 3W



SELF  
TEST

**3W Wall/Ceiling Mounted Emergency Exit Signs - Maintained**

MAINTAINED YES WATTAGE 3W



SELF  
TEST

**3W Suspended Emergency Exit Signs - Maintained**

MAINTAINED YES WATTAGE 3W

# Now offering solutions for project lighting







# Novah saves 35% more energy than market leading competitor

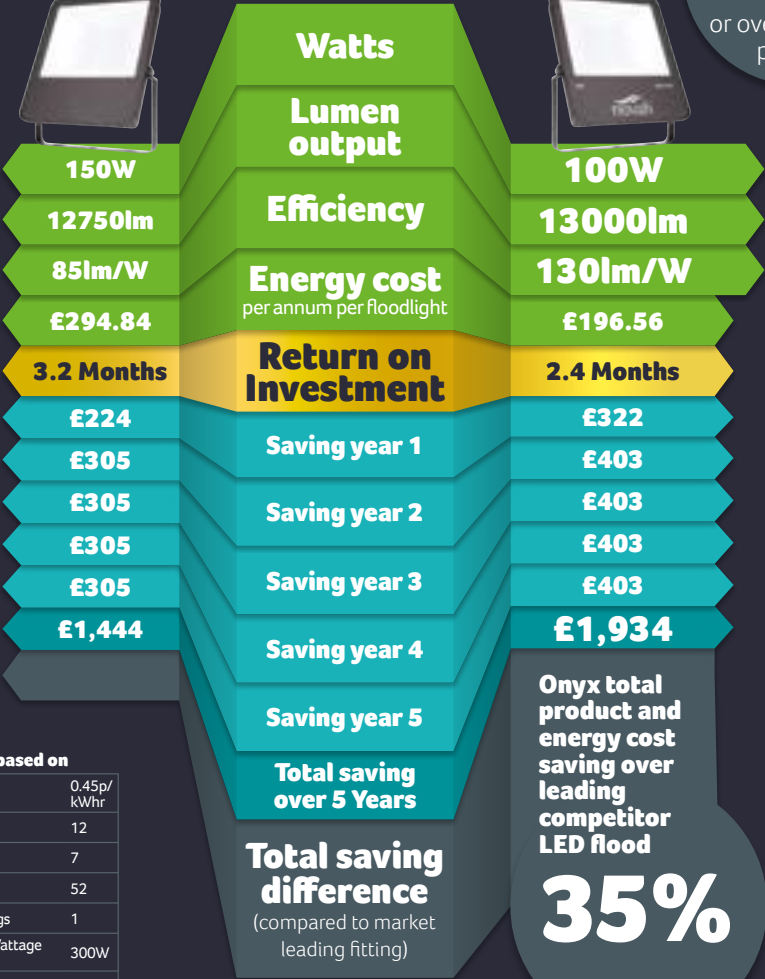
Onyx saving over leading competitor LED flood over 5 years

**£490**  
or over **£98**  
per year

LED flood market leader



**onyx**  
LED FLOOD



Onyx total product and energy cost saving over leading competitor LED flood

**35%**

Calculations based on

Cost per kWh	0.45p/kWhr
Hours per day	12
Days per week	7
Weeks per year	52
Number of Fittings	1
Current Fitting Wattage including losses	300W
Current Maintanance	£10
Installation Cost	£50

All calculations include Capital Allowance Benefit of 19%.

# Testimonials

*We have been using Novah's LED lighting products for many years and they have provided us with fantastic energy savings. Their products have been reliable and high quality and required virtually no maintenance.*

*Their offering has been versatile so we have been able to use their fittings in all areas of production and warehousing.*

**Colin Tarry** Engineering Maintenance Manager **Glen Dimplex**

*Novah has delivered a turnkey solution which is exactly what we wanted. The energy savings are fantastic and get us closer to our Net Zero Carbon targets as well as significantly reducing our energy costs at a time when energy prices are going up. The Atlas and the Solray are high performance products which don't cause glare in our working spaces and improve our working environments.*

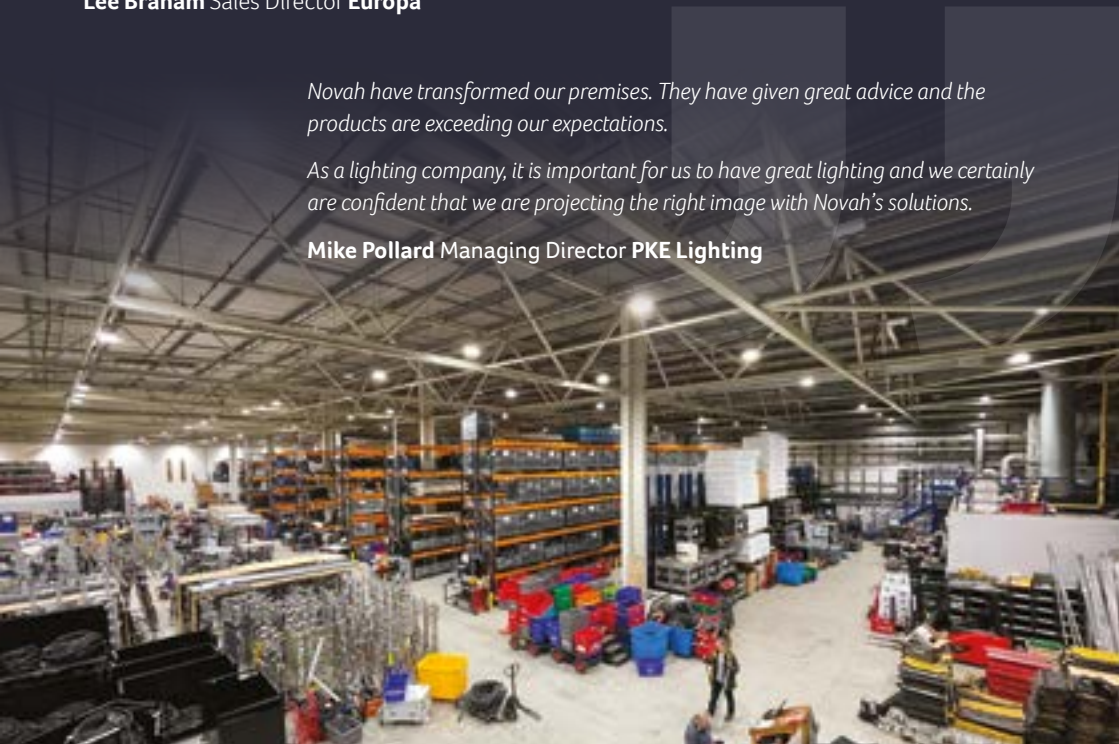
*Craig Lewis and the sales team have been professional and knowledgeable and I would not hesitate to use them again or recommend them for anyone with a similar project.*


**Lee Braham** Sales Director **Europa**

*Novah have transformed our premises. They have given great advice and the products are exceeding our expectations.*

*As a lighting company, it is important for us to have great lighting and we certainly are confident that we are projecting the right image with Novah's solutions.*

**Mike Pollard** Managing Director **PKE Lighting**





Your local Novah stockist is

+44 (0)1928 242 918 | [sales@novah.co.uk](mailto:sales@novah.co.uk) | [www.novah.co.uk](http://www.novah.co.uk)

