



Welcome to ViveLab and thank you for signing up.

We're happy to have you on board!
We have collected our most essential tips to make your first steps easier! Our short tutorial will guide you through the basics.

Need more help getting started? [Sign up](#) for a detailed training with one of our experts now.





Dashboard

ViveLab Name	Users / Active	Documents	
Empty scene	1 / 0	0	ENTER
workplace scene	1 / 0	0	ENTER

You can invite unlimited number of users with different authorities to join your group.
Note: All members of the group will use the licensed ViveLab time.

Here are some informations regarding the first steps in ViveLab:
- ViveLab is a cloud-based lab where you create a scene...
Dear Test User! 11/07/2019
We have already created a Group for you

Storage 0% Used (0,00 Gb) Free (15,00 Gb)

License expires in 10/08/2019 Actual period elapsed time (0 days) Actual period remaining (30 days)

Users 0/3 Current (0 user) Max (3 user)

Do you need more? Do not wait until it's too late! [UPGRADE YOUR PLAN](#)

Do you want to be a professional ViveLab user? Get in touch with your personal mentor! [ARRANGE A GUIDED TOUR](#)



Dashboard

ViveLab Name	Users / Active	Documents	
Empty scene	1 / 0	0	ENTER
workplace scene	1 / 0	0	ENTER

ViveLab messages

11/07/2019

Dear Test User!

Here are some informations regarding the first steps in ViveLab:

- ViveLab is a cloud-based lab where you create a scene...

Your trial license includes 8-hours long full access to ViveLab, which is valid until one month from the sign up.

Your 8-hours full access starts as soon as you enter the lab.

Storage 0% Used (0,00 Gb) Free (15,00 Gb)

License expires in 10/08/2019 Actual period elapsed time (0 days) Actual period remaining (30 days)

Users 0/3 Current (0 user) Max (3 user)

Do you need more? Do not wait until it's too late! [UPGRADE YOUR PLAN](#)

Do you want to be a professional ViveLab user? Get in touch with your personal mentor! [ARRANGE A GUIDED TOUR](#)



Dashboard

ViveLab Name	Users / Active	Documents	
Empty scene	1 / 0	0	ENTER
workplace scene	1 / 0	0	ENTER

ViveLab messages

Dear Test User! 11/07/2019

Here are some informations regarding the first steps in ViveLab:

- ViveLab is a cloud-based lab where you create a scene...

Dear Test User! 11/07/2019

We have already created a Group for you

Storage 0%

License expires in **10/08/2019**

Users 0/3

Do you need a free training? Just click here, and one of our experts will contact you soon.



UPGRADE YOUR PLAN

Do you want to be a professional ViveLab user? Get in touch with your personal mentor!

ARRANGE A GUIDED TOUR

5/16 STEP 1 - CHOOSE A LAB AND CLICK ON THE ENTER BUTTON

The screenshot shows the ViveLab ERGO dashboard. At the top, there is a navigation bar with the logo, a search bar containing 'TRIALGROUP - Username', and links for HOME, USERNAME, LOG OUT, and EN. Below this is a main navigation menu with options: DASHBOARD, VIVELABS, GROUP DETAILS, RESOURCES, UPLOADED FILES, USERS, INVITATIONS, and SHOP. The main content area is titled 'Dashboard' and features a table of labs. The table has columns for 'ViveLab Name', 'Users / Active', and 'Documents'. Two labs are listed: 'Empty scene' and 'workplace scene', both with 1/0 users and 0 documents. Each lab has a blue 'ENTER' button with the ViveLab logo. To the right of the table is a 'ViveLab messages' section with two messages dated 11/07/2019. The first message says 'Dear Test User! Here are some informations regarding the first steps in ViveLab: - ViveLab is a cloud-based lab where you create a scene...'. The second message says 'Dear Test User! We have already created a Group for you'. Below the messages, there is a section for 'Actual period remaining (30 days)' with a calendar icon and the date '10/08/2019'. A 'Users 0/3' section shows a progress indicator for 'Current (0 user)' and 'Max (3 user)'. At the bottom, there are two promotional banners: 'Do you need more? Do not wait until it's too late!' with an 'UPGRADE YOUR PLAN' button, and 'Do you want to be a professional ViveLab user? Get in touch with your personal mentor!' with an 'ARRANGE A GUIDED TOUR' button.

ViveLab Name	Users / Active	Documents	
Empty scene	1 / 0	0	 ENTER
workplace scene	1 / 0	0	 ENTER

In this section, you can find your "labs"(=ViveLab). We have already created two test environment for you. The "workplace scene" lab has an imported CAD and Xsens motion file, so you can easily play an animation and run analysis as well.

Choose one of them and click on the "enter" button!


Actual period remaining (30 days)

10/08/2019


Users 0/3

● Current (0 user) ● Max (3 user)

Do you need more?
Do not wait until it's too late!

 **UPGRADE YOUR PLAN**

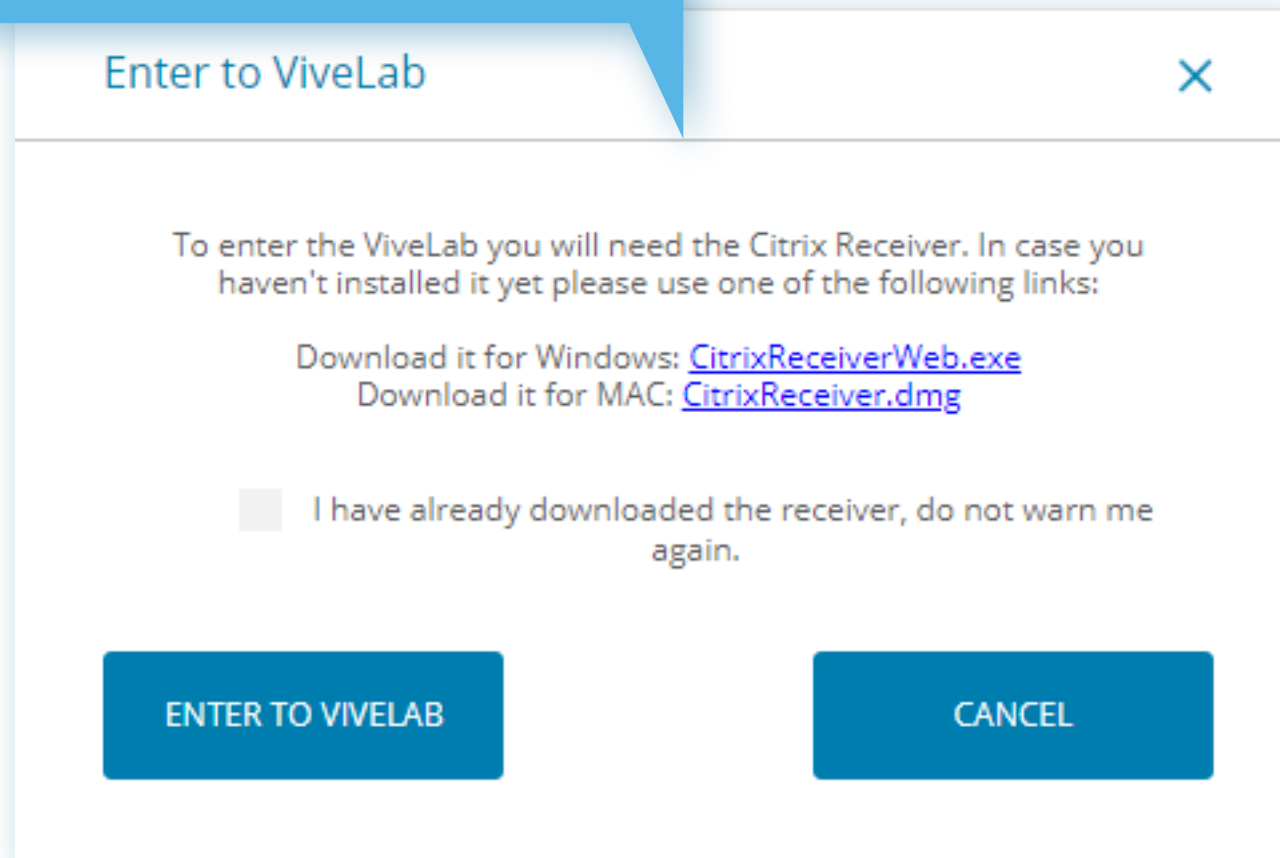
Do you want to be a professional ViveLab user?
Get in touch with your personal mentor!

 **ARRANGE A GUIDED TOUR**



After clicking the "enter" button, you need to install the Citrix Receiver.

Let's see how you can do this!



Enter to ViveLab

To enter the ViveLab you will need the Citrix Receiver. In case you haven't installed it yet please use one of the following links:

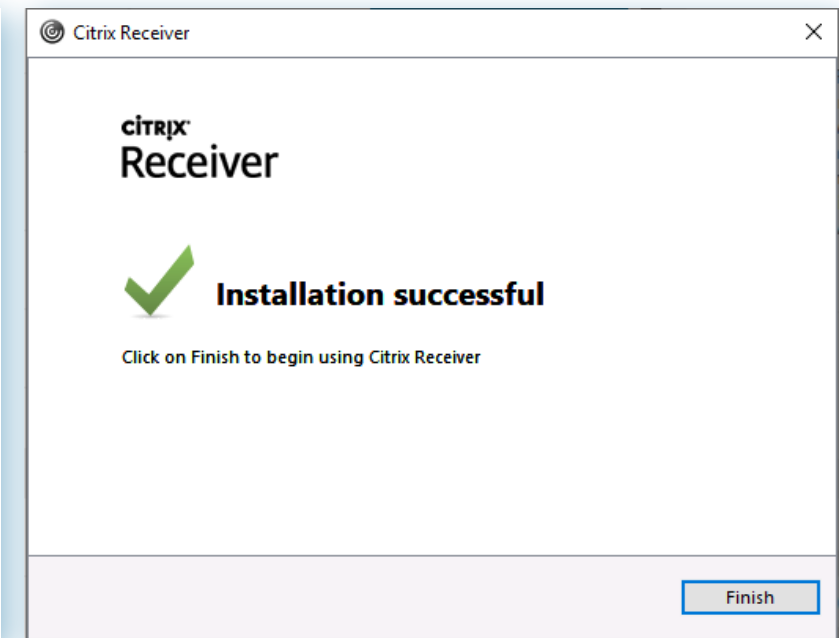
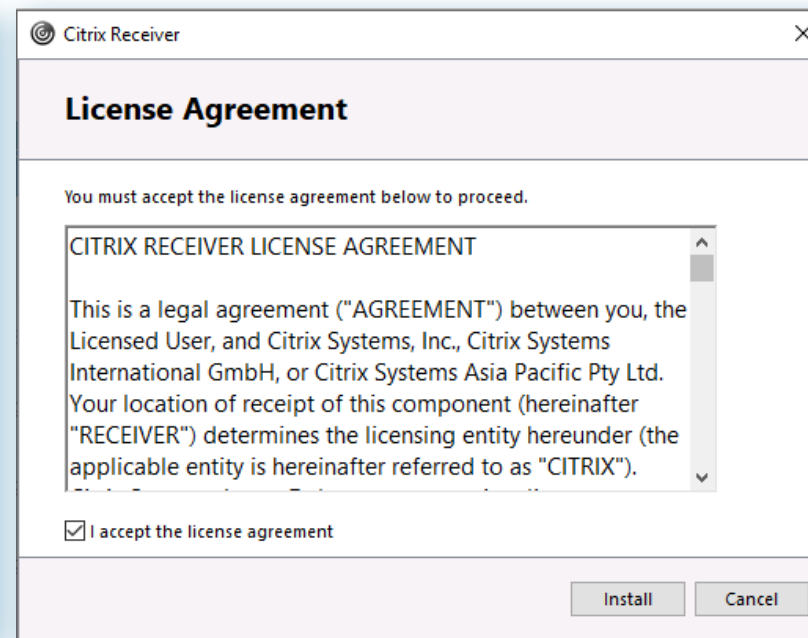
Download it for Windows: [CitrixReceiverWeb.exe](#)
Download it for MAC: [CitrixReceiver.dmg](#)

I have already downloaded the receiver, do not warn me again.

ENTER TO VIVELAB CANCEL

1. Choose your operation system and download the software by clicking on the relevant link below.

Are you having trouble installing Citrix or signing in?
Just send an email to support@vivelabergo.com, and we will help.



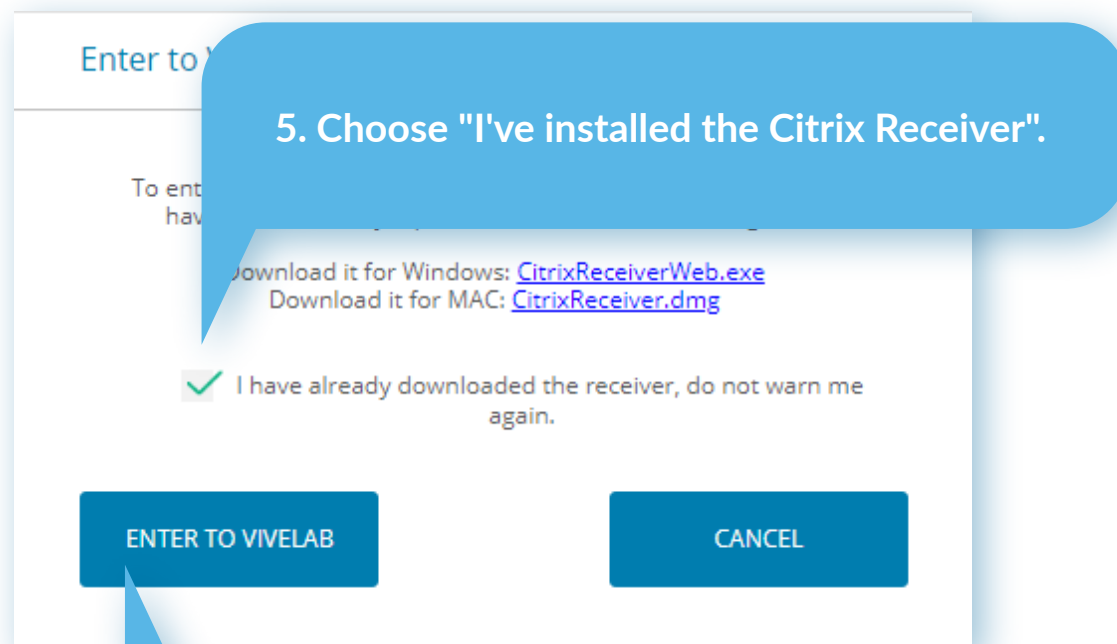
2. Click the 'Start' button.

3. Mark the checkbox called "I accept the license agreement" and click on the install button.

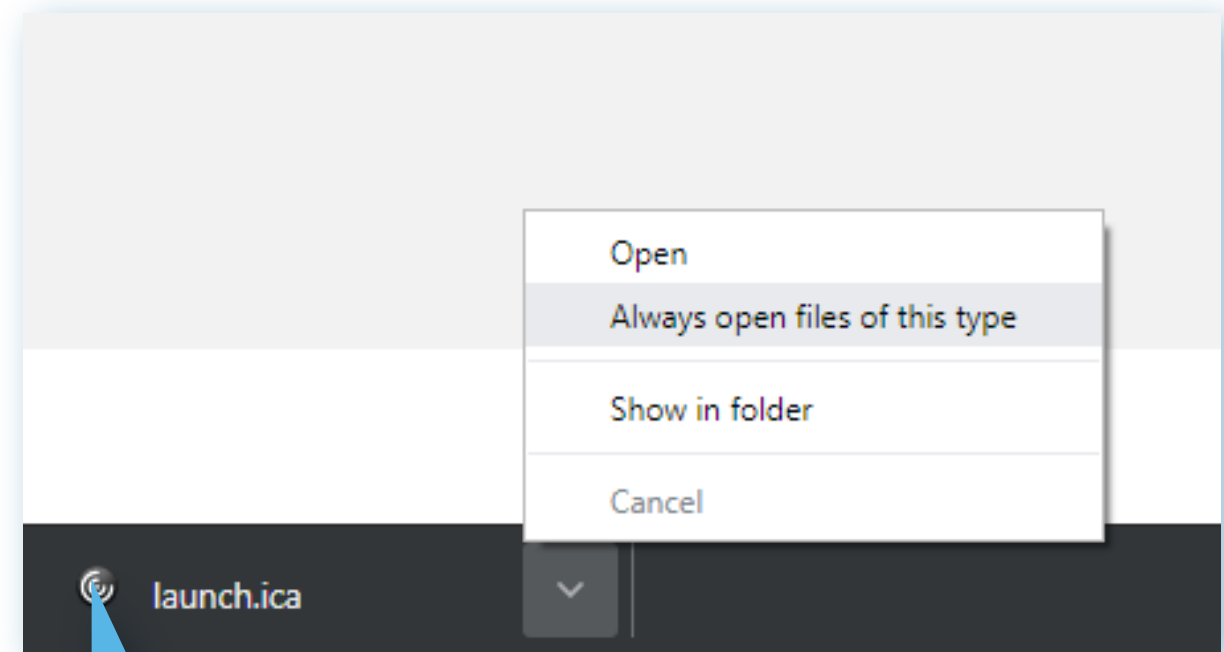
4. Click the "finish" button.
(Do NOT CLICK the "add account" button).



Are you having trouble installing Citrix or signing in?
Just send an email to support@vivelabergo.com, and we will help.



6. Click on the "Enter ViveLab" button.

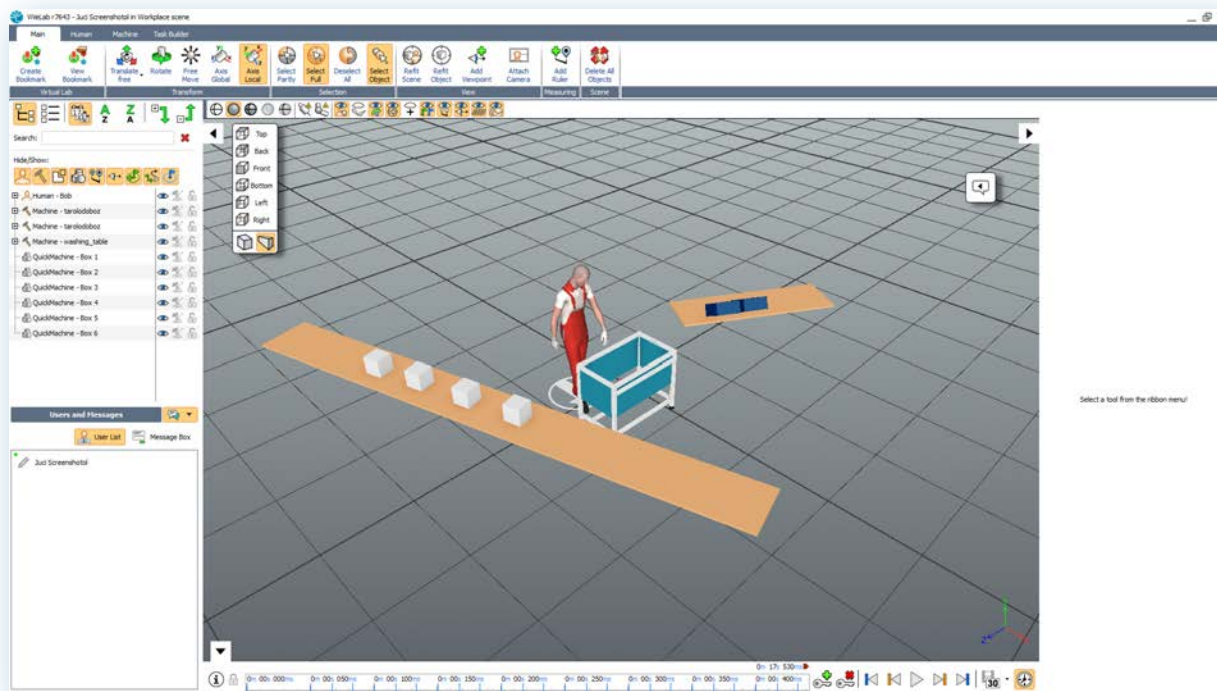


7. An ICA file will download. Please, run this file after download.
Tip: To run the ICA file automatically next time with Chrome, you can click with the right mouse to the downloaded ICA file, and choose the "always open files of this type" and choose the Citrix application.

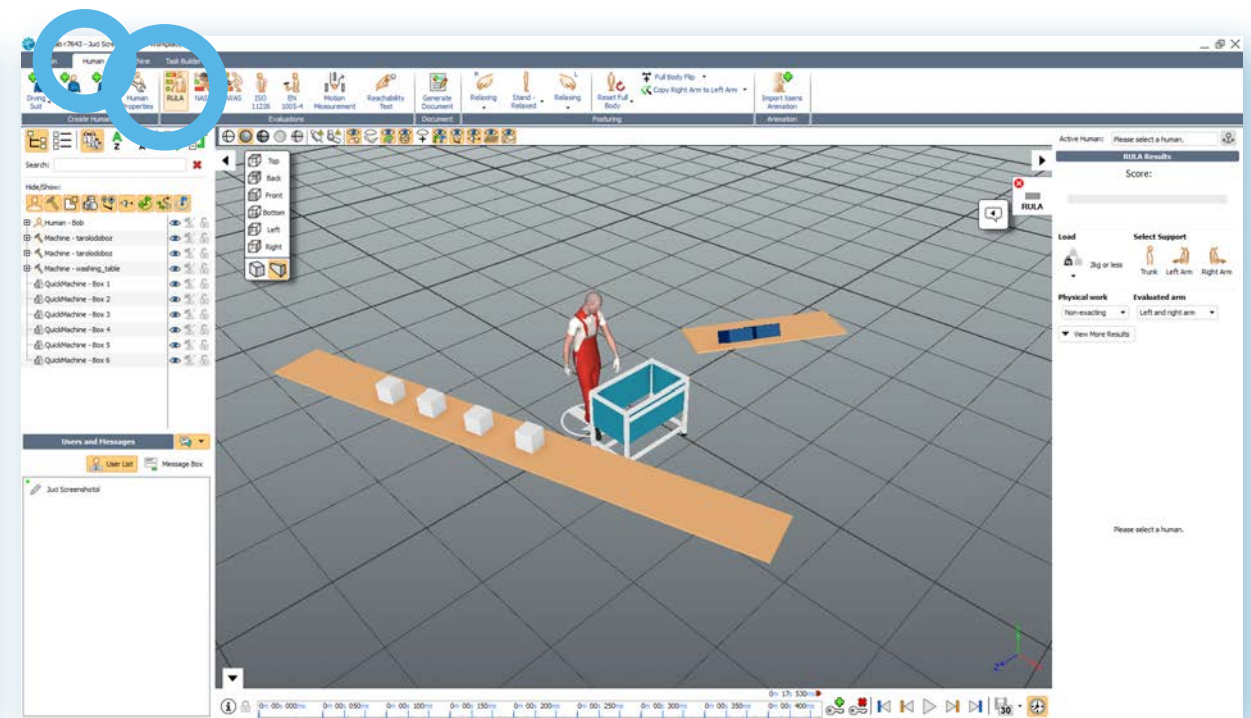
10/16 STEP 4 - START ANIMATION AND RUN ANALYSIS

After you have successfully installed the Citrix Receiver, the Lab you have chosen is going to open.

The software has several use cases. Now we will show you how to run analysis and export a PDF report most easily.



1. Wait for the Lab to load



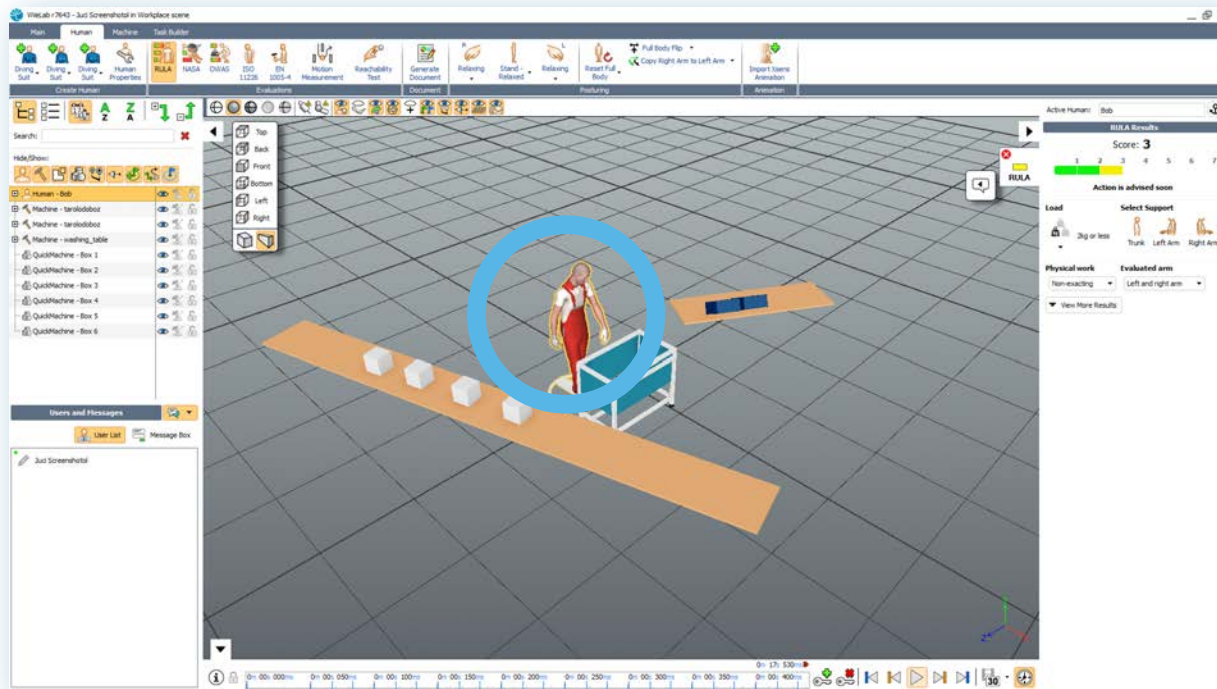
2. Choose the "human" menu and choose RULA analysis



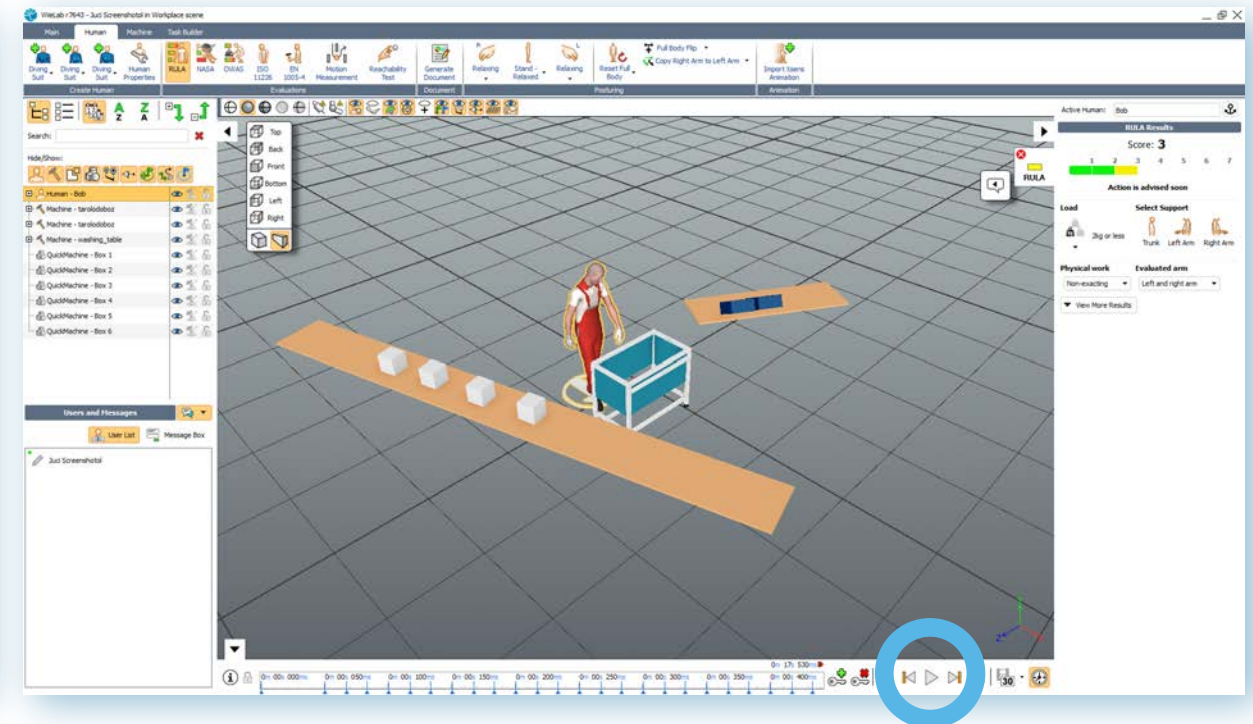
11/16 STEP 4 - START ANIMATION AND RUN ANALYSIS

After successfully installing Citrix receiver, your chosen Lab will open.

The software has several use cases. Now we will show you how to run analysis and export a PDF report most easily.



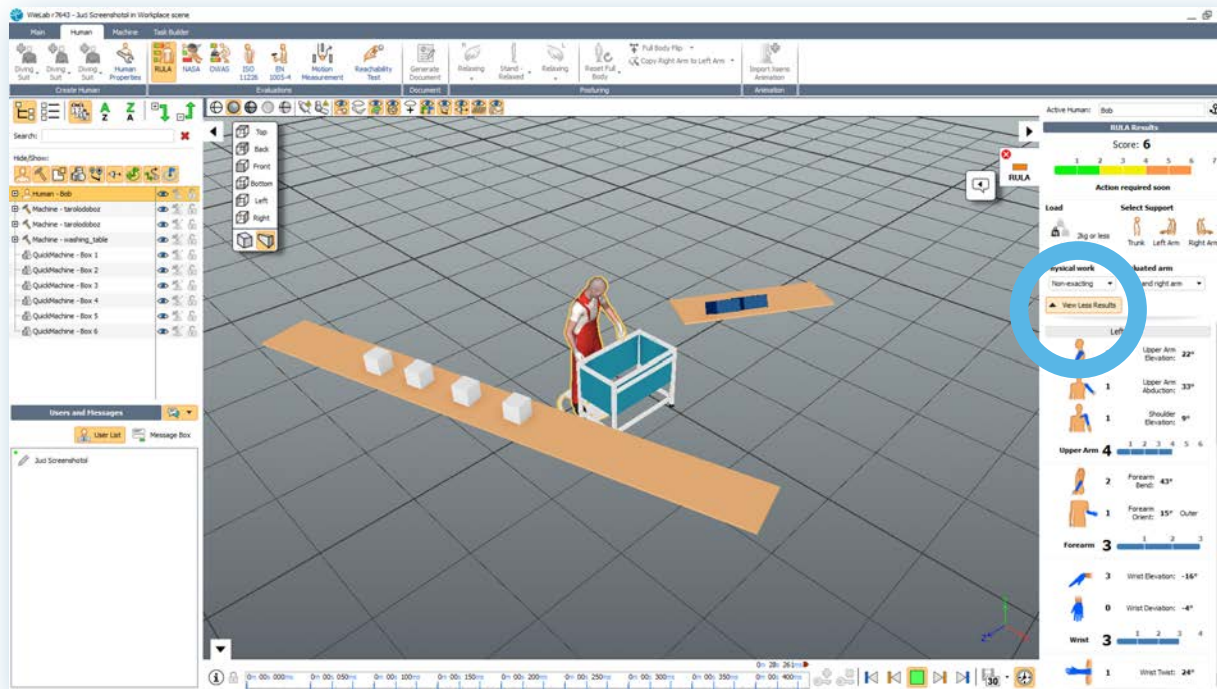
3. Click to the human



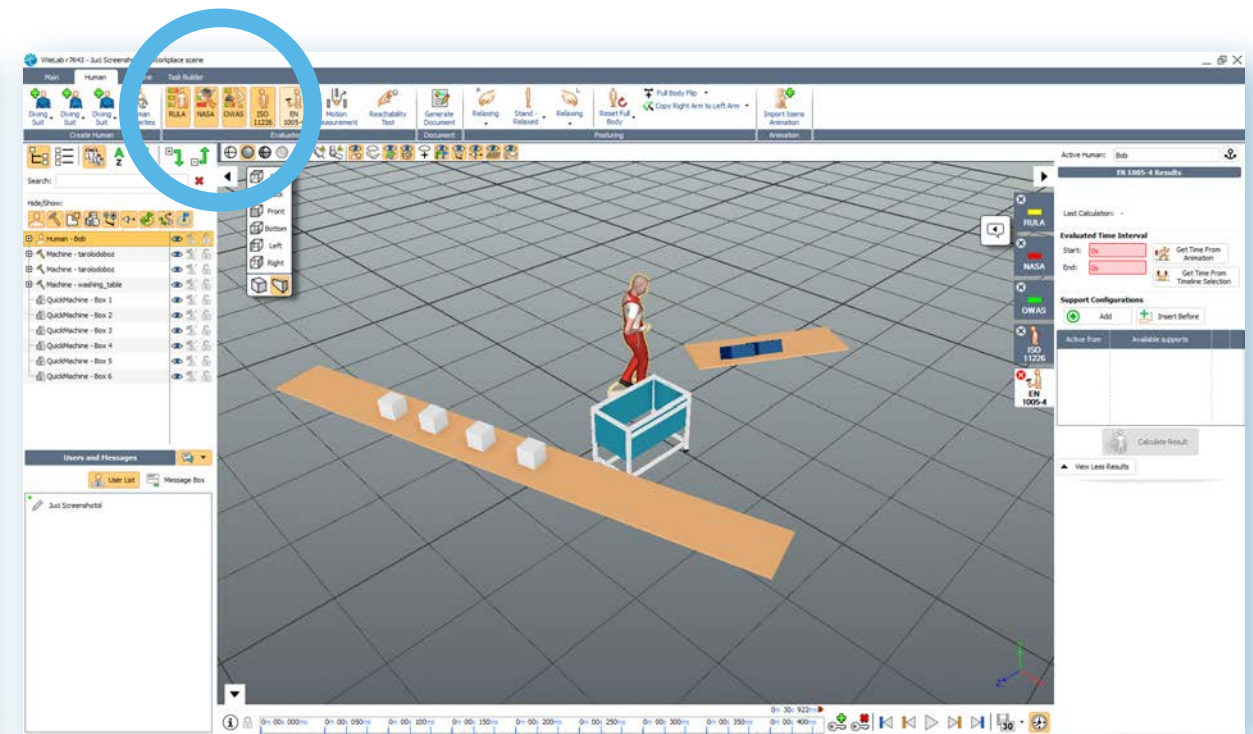
4. Press the "play" button



12/16 STEP 4 - START ANIMATION AND RUN ANALYSIS



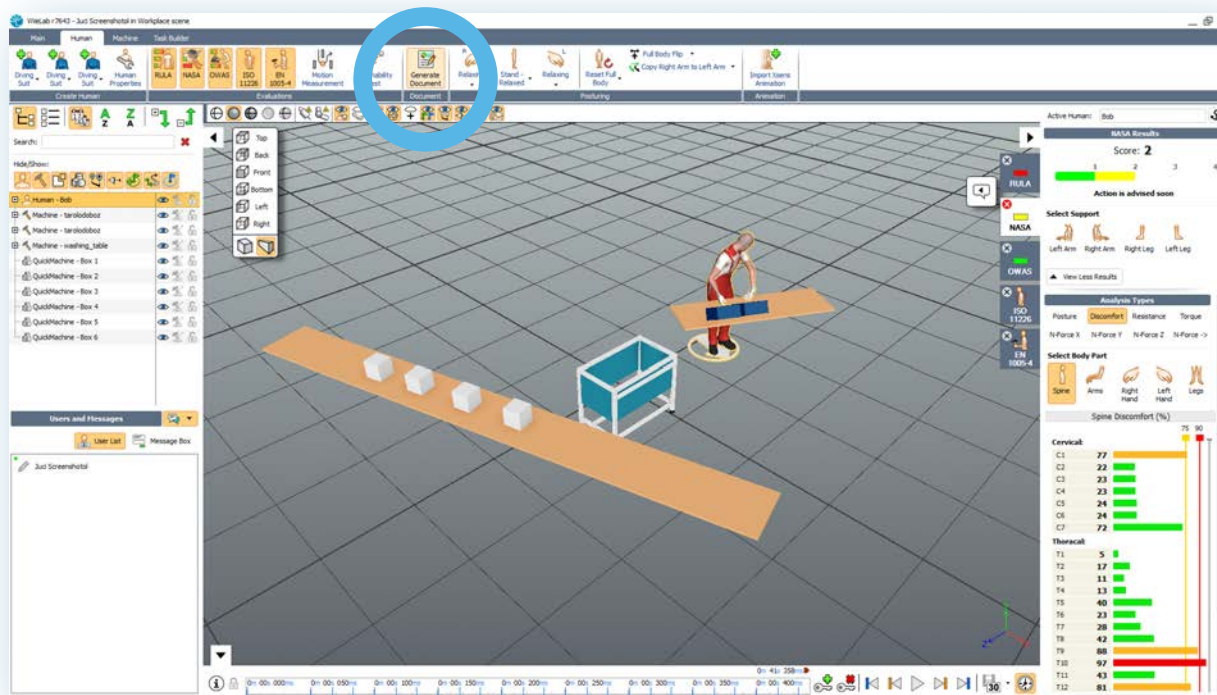
5. Click to the "view more results" button



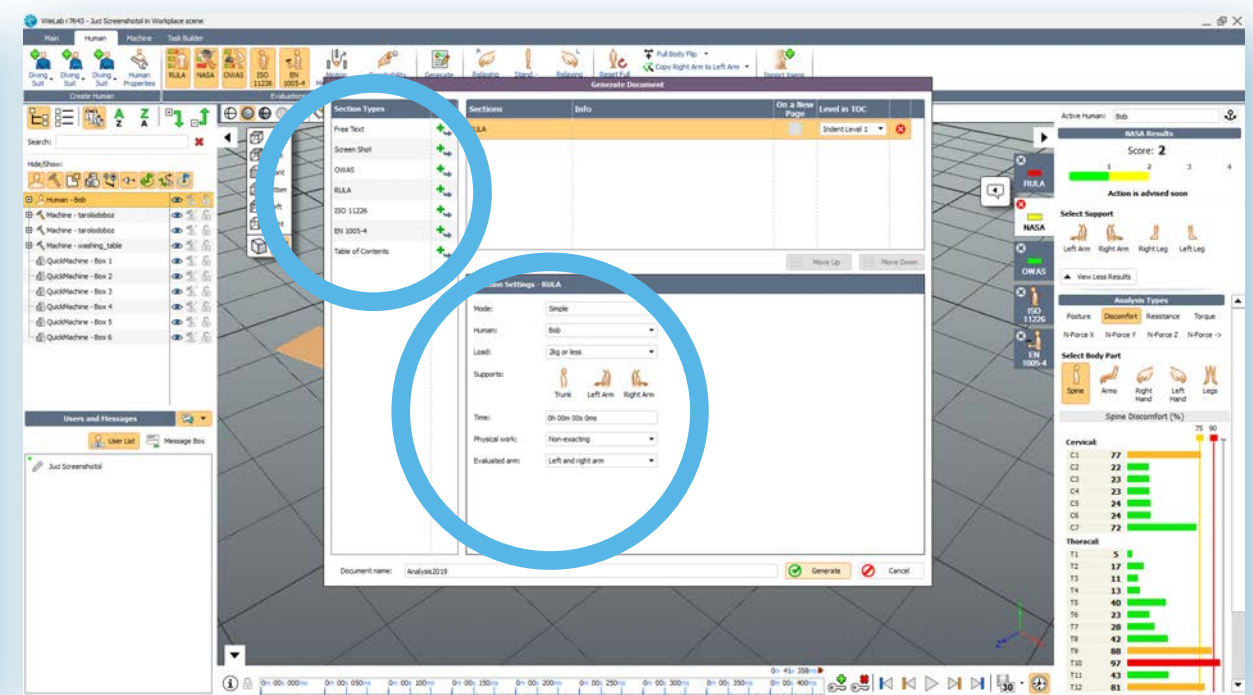
6. Choose another method and go through the same process



13/16 STEP 5 - CREATE A PDF REPORT



1. Click on the "generate document" button



2. Select the methods that you would like to report and fill out the empty fields.

3. Exit the Lab and go back to the portal



14/16 STEP 6 - DOWNLOAD THE PDF REPORT

The screenshot shows the VIVE LABS portal interface. At the top, there is a navigation bar with 'HOME', 'USERNAME', 'LOG OUT', and 'EN'. Below this is a search bar containing 'TRIALGROUP' and '- username'. The main navigation menu includes 'DASHBOARD', 'VIVE LABS', 'GROUP DETAILS', 'RESOURCES', 'UPLOADED FILES', 'USERS', 'INVITATIONS', and 'SHOP'. The 'VIVE LABS' menu item is circled in blue with the number '1.' next to it.

The main content area is titled 'Your Vive Labs'. It contains a table with the following data:

ViveLab name	Users / Active
Empty scene	1 / 0
Workplace scene	1 / 0 2. >

The 'Workplace scene' row is highlighted in green and circled in blue with the number '2.' next to it. Below the table is a 'CREATE NEW VIVELAB' button.

The 'Workplace scene' details panel shows the following information:

- Size: 110,79 Mb
- Storage: 0%
- Documents: 1
- Saved versions: 3
- Users / Active: 1 / 0
- Created: 24/05/2019 4:13:37 PM

Below the details panel, there are sections for 'ViveLab description', 'Users', 'Add Group Members / Guests to ViveLab', and 'Change Lab owner'. The 'Documents created by this ViveLab' section is circled in blue with the number '3.' next to it. It contains a table with the following data:

Name	Created	Size (Mbyte)	Actions
Analysis2019	04/06/2019 11:14 AM	0,04	Download, Edit, Delete

When you return to the portal, you can download the pdf report which you generated in the Lab.

To find the created analysis report, please follow these steps:



We highly recommend downloading these slides to take the first steps.

DOWNLOAD

Visit our [YouTube channel](#) for more ViveLab tutorials or read our [resource library](#). Here you can find further information about the simulation, analysis, and reporting.





Now you can do the basic steps in ViveLab

Need more guidance? Don't hesitate to send an email to support@vivelabergo.com.

We would really appreciate if you could give feedback after your trial!