

ZAMBIA

THE AFRICA HUB
BY SMALL WORLD MARKETING



Trusted insider knowledge from
handpicked experts



SAMPLE ITINERARY #3

IN PARTNERSHIP WITH
THE LATITUDE HOTELS &
SAUSAGE TREE CAMP

Lusaka and
Lower Zambezi
7 nights



"It's quite rare in our industry that we find a safari camp we want to return to over and over again. Sausage Tree Camp is just that. I have been visiting many years for my own personal safaris and it always delivers extraordinary wildlife sightings, a warm friendly atmosphere, and the magic of being on the Zambezi River."

- Rose Hipwood, The Luxury Safari Company

ITINERARY OVERVIEW

1 night | Latitude 15° Hotel
7 nights | Sausage Tree Camp

This is the ultimate relaxation and rejuvenation itinerary. Guests will spend their first night "decompressing" after their international flight at Latitude 15 Hotel in Lusaka before taking the short flight down to the Lower Zambezi Valley. Sausage Tree Camp is the ideal place to spend an extended safari with the wide variety of safari activities on offer and also the calming Zambezi River in front offering a captivating panorama. Time should be made for the rewarding and intimate safari experience that can be had without venturing further than one's veranda or the pool, making a longer stay at Sausage Tree an extremely stimulating, enriching and restorative safari experience.

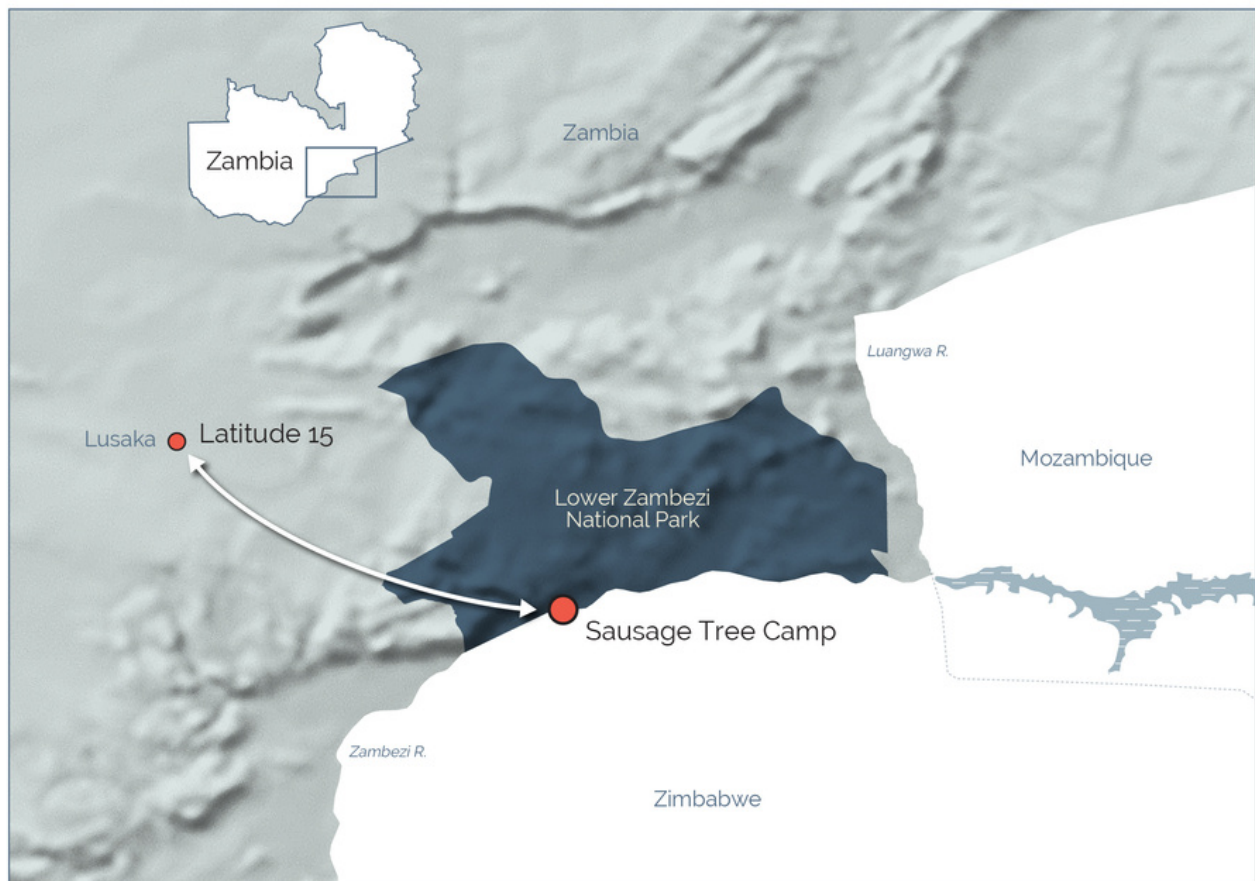
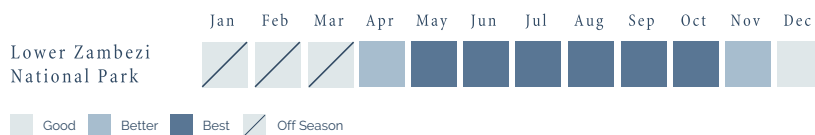
WHO?

Anyone in need of rest and relaxation in a simply serene setting

HIGHLIGHTS

- Incredible wildlife viewing opportunities in some of the most game rich regions of Africa
- Real off the beaten track experience
- Water based safari experience in the Lower Zambezi
- The chance to relax in a completely natural environment

WHEN TO GO?



DAY 1

Arrive: Lusaka Airport

Transfer: 30 minute transfer to Latitude 15° Hotel

1 night at Latitude 15 Hotel

Inclusions: B&B



Welcome to Lusaka... Latitude 15° is set amidst the beautiful tree-lined avenues on the south-east corner of Lusaka, 20 minutes to the city centre and 30 minutes from Kenneth Kaunda International Airport. With only 32 spacious guest rooms, and three 2-bedroom suites, a restaurant, bar, lounge and poolside terrace blending modern Africa, with a cosmopolitan twist. Enjoy a meal at Latitude's private members' club – The Other Side – which offers all hotel guests a separate dining, drinking, networking and socialising den, a heated pool, gym, spa, a contemporary set of workspaces and a series of music, art, fashion, business and party events.

Sumptuous beds, walk-in showers, full-sized baths, inviting sofas, 32" flat-screen TV's, Nespresso coffee machines, complementary still and sparkling Latitude mineral water and free broadband Wi-Fi. make Latitude the perfect first stop on any itinerary to acclimatise.. Cool in the summer, cosy in the winter, naturally sun-lit and lovingly adorned with luxurious linens, sumptuous fabrics and bespoke artworks.

Latitude Hotels Group have a genuinely ethical attitude to their existence. Providing uber chic city hotels that focus on local African authenticity through design and décor. Their statement interiors, created by local communities using recycled and sustainable materials, offer a unique vibe unlike any formulaic hotel. Latitude are true ambassadors for emerging African talent. Their relationship with each local community is a symbiotic one with corporate responsibility and sustainability at the heart of their brand. Each property exudes an individual spirit that embraces and celebrates local influence. Curated original artworks form huge centrepieces in lobbies, ornate hand beaded textiles adorn the stylish bedrooms and funky recycled furniture really push the boundaries of local materials.

Latitude 15 is the perfect spot to decompress after your international flight and appreciate the Zambian culture before embarking on your safari.

Lusaka and Latitude 15 Fast Facts:

- Latitude 15 is the perfect spot to recover from international travel
- Luxuriously and originally designed rooms set in large green, lush gardens
- Perfectly positioned to use as a spring board to explore Lusaka with art galleries and shops nearby

DAY 2

Private Transfer: Latitude 15 to Lusaka airport followed by 25 minute flight to Lower Zambezi National Park (LZNP)

Depart: Lusaka Airport | **Arrive:** Jeki airstrip, Lower Zambezi

7 nights at Sausage Tree Camp

Inclusions: All Inclusive

The flight from Lusaka takes 25 minutes and is stunning, dropping down into the Zambezi valley. You will be met at Jeki airstrip by your guide who will drive you 5 minutes to the boat waiting to whisk you along the Zambezi to arrive at Sausage Tree Camp. Whizzing along the river with a cool drink in hand and watching elephants, hippos and game all around you is a truly exhilarating way of arriving. On arrival, you will realise that Sausage Tree Camp's location is one its strongest features. The camp is on the Zambezi river but set back behind some grassy islands. These islands ensure a constant flow of game activity right in front of the camp ensuring that you don't even need to leave your room to enjoy a full safari experience.

Welcome to the Lower Zambezi... This National Park lies on the northern bank of the Zambezi River, the Park stretches back through the hills to the north but most of the game is found on the fairly narrow strip of land between the river and the hills. There are a few camps up-stream of the National Park but very few inside the Park itself so visitors never feel overcrowded. One of the features that make it so popular is the variety of activities on offer. Waterborne activities such as boating and canoeing to contrast with the usual driving and walking safaris that are also available. This stretch of the mighty Zambezi is also one of the best areas in which to fish for the notorious Tiger Fish, Africa's most exciting fresh-water sport fish



Sausage Tree Camps Fast Facts:

- The only owner-run property in Lower Zambezi
- Huge variety of land and water based activities on offer
- Guests can head out on foot on a walking safari to see the bush from a different perspective
- A must do is to spend an afternoon in camp watching the wildlife in front of the camp
- Night drives offer the chance to spot elusive nocturnal species, including leopards which the park is famous for

DAY 2

The rhythm of a safari day

Background

Founded in 1996 as Zambia's most luxurious bush camp, located within the exclusive Lower Zambezi National Park (LZNP), Sausage Tree Camp, has redefined the safari experience and become the benchmark for Zambian bush chic. The camp, named after the sausage shaped fruit in the giant Sausage Trees was rated No. 1 by the BBC's holiday program's 10 best luxury resorts of the world. These accolades are a credit to the vision and reputation that owner operated Sausage Tree Camp (Chifungulu Ltd.) and director Jason Mott have established.



Location

The camp has a privileged location within the natural beauty of the protected Lower Zambezi National Park with its abundance of wildlife. Sausage Tree Camp has no boundaries and is ideally placed so the animals are free to wander straight through and around the camp making the comfort of your tent the ideal wildlife viewing sanctuary. The Camp hosts a maximum of 18 guests, accommodated in seven Luxury Suites dotted discreetly along the riverbank. Each Luxury Suite is a spacious island of cool minimalist style, serviced by a Muchinda (private butler). Highlights being the unique open-air shower, a large deck with private plunge pool & lounge area, mini bar and a view to marry for...

The camp also offers a large 25 metre long swimming pool which is idyllically situated, overlooking the mighty Zambezi River.

Dining

Day one is about getting your safari legs & getting into the rhythm of a safari camp. You'll certainly not go hungry whilst on safari. The day starts with an early morning wake up call of fresh coffee and tea brought to your tent by your Muchinda. After a couple of hours of the early morning game drive, you will stop for a freshly brewed coffee and freshly baked muffin. Once back in camp you will have breakfast where you can choose between a full cooked option or a lighter break of fruits and yoghurt. Between 11 & 3pm is rest time when the heat of the day is at its peak. Settle yourself into your plunge pool and enjoy observing the animals in the river right in front of you.

Lunch is served on the main deck overlooking the river and tends to be a lighter option. Before the evening game drive tea & cake is served with freshly made lemonade or iced tea. The highlight of your day is the sundowners enjoyed whilst out on safari watching the sun set over the Zambezi escarpment, overlooking the river or open plains.

The experience of dining at Sausage Tree Camp goes far beyond the food itself. With its African inspired fusion cuisine, made from the freshest ingredients, the tastes and presentation will astound you. Dinners to the sounds of the African evening by candle light in the open air dining tent, by star light on the deck, by campfire light deep in the bush, or by lantern light in the privacy of your own deck;



DAY 3 - 7

All about the activities

Walking Safari

Walking is the perfect way to search for the smaller creatures, learn about the trees, the plants and examine the different tracks and signs. Walking safaris were **pioneered in Zambia** and remains one of the few areas where this can be truly enjoyed.

Led by a professional walking guide and National Parks Wildlife Officer, walking is carried out in small groups. Taking advantage of the cooler morning temperatures, you will take a game drive from camp to an open area where the walk begins. Beware - not only do you see the smaller things on foot, it is also not uncommon for us to see lion on the bush walks.



Game Drives

Game drives are the most successful way to see a good **variety of wildlife**, both large and small. Visiting more areas and witnessing the diversity of the Lower Zambezi National Park you can appreciate the unspoiled wilderness of Zambia. A larger area can be covered in a shorter time frame, increasing the chance to find good game. The vehicles also allow those 'up close and personal' experiences - the team of professional guides will ensure that it is not too close!

Night drives are the perfect way to experience the nocturnal animals, including the elusive leopard, genet, civet, porcupine and giant eagle owl. The big cats tend to be more active at night and you may find yourself following lions on the hunt. Your guide will also point out the constellations of the Southern night sky.



Canoeing

The Lower Zambezi is renowned for its spectacular canoeing. As one of the few privileged operators based inside the National Park, STC is able to canoe guests down the most stunning section of the Zambezi, "The Chifungulu Channel". Led by a highly qualified canoe guides, explore the banks of the river, where game can be seen from a totally different perspective - looking UP rather than down!

Canoe trips vary in length (from one to seven hours) however a one-hour canoe trip is a great prelude to an evening game drive. No experience or particular strength is required - it is an effortless drift, as the flow of the Zambezi pushes the canoes along. Rather than a work out, this is a time to relax, listen to the sounds of the huge variety of bird-life and admire their sheer beauty. A full day canoe trip, stopping for a picnic lunch en-route is an unbeatable safari experience.



DAY 3 - 7

All about the activities

Fishing

The Zambezi River is host to some of the most spectacular fresh water sport fishing in the world with plentiful Tigerfish and Tilapia amongst others. Sausage Tree Camp offers both spinning and fly fishing, both strictly catch and release in accordance with the principles of the National Park.

The most sporting and certainly the most fun fish to catch is the famous Tigerfish. A relative of the infamous piranha, Tigerfish have large carnivorous teeth, can grow to 15kg / 33lb (the camp record 11.3kg) and are renowned for their strength and spectacular "leaping out of the water" fighting performance. Fishing is successful all year round, however the warmer months (September - December) are definitely the best time to catch Tigerfish. This is the breeding season when the fish are more active, feeding more regularly and are far more aggressive. The water level is typically lower and the visibility at its very best.

Boat cruises:

Scenic boat cruises are a very relaxing way to view the game that comes down to the river to drink and bathe, whilst also taking in the unique water wildlife. Until the Zambezi River is explored by boat, it is impossible to truly appreciate the huge hippopotami pods and crocodile populations. Lucky guests have experienced the truly memorable sight of elephant crossing the Zambezi, from Mana Pools National Park to LZNP. To view the most amazing sunsets in Africa, floating sundowners (Gin and Tonic are de rigueur!) in the middle of the Zambezi is a must! This can also provide a photographic opportunity for that perfect African sunset.

Sausage Tree Camp operates scenic boat trips using 7metre aluminium river cruisers. Designed for the Okavango Delta, they are the perfect boat for the Zambezi River as sandbanks make navigation on the water very difficult.



Visiting Conservation Lower Zambezi:

Conservation Lower Zambezi (CLZ) is a non-profit organisation committed to the protection of wildlife and to the sustainable use of natural resources in the Lower Zambezi.

Thinking beyond any single species, CLZ's calling has been to protect and conserve the Lower Zambezi as an ecosystem. The dedicated team have established environmental education and community engagement programmes, reaching thousands of students in some of the most rural communities of the area. Sausage Tree Camp work closely with CLZ and supports them via conservation fees and other fundraising activities. Spending a few hours learning more about this amazing organisation gives any guest a real insight into the direct relationship with the camp and the protection within the LZNP.



DAY 3 - 7

and relax

Massage

For guests staying at Sausage Tree Camp, a complementary massage is included in their stay. The highly skilled masseuse uses local products and provides the perfect level of pressure.

Having a massage on the deck of your room with the hippos grunting in the background (& maybe an occasional lion roar floating on the air) is the most incredibly relaxing experience.

DNA - Do Nothing At All!

Having the wide Zambezi river right in front of the camp means that every room is perfectly positioned for guests to sit on their deck, or in their plunge pool and enjoy their very own wildlife spectacle. There is always some kind of game grazing on the grassy islands in front of the camp. Whether it is buffalo, hippo, herds of elephants or some of the incredible bird life, it is like having a life David Attenborough documentary from the comfort of your deck. the river is so wide and vast that it creates a very relaxing and rejuvenating vibe. Every guest staying at STC must stay long enough to be able to spend a morning or afternoon on their deck and enjoying the fact that they are completely surrounded by the most phenomenal game viewing without having to step on a vehicle.



Price from: \$5,561 (per person sharing)

Guide Price only

Itinerary Inclusions:

- Full board accommodation, all meals, local drinks and house wines, walking Safaris, game drives,
- Complementary massage
- Jeki Airstrip transfers
- Return flights from Lusaka

Itinerary Exclusions:

- Visa fees for entry to Zambia.
- Gratuities and items of personal nature.
- Park & conservation fees