

80,000 RPM ON YOUR SWISS STYLE LATHE THE NEW 800LT

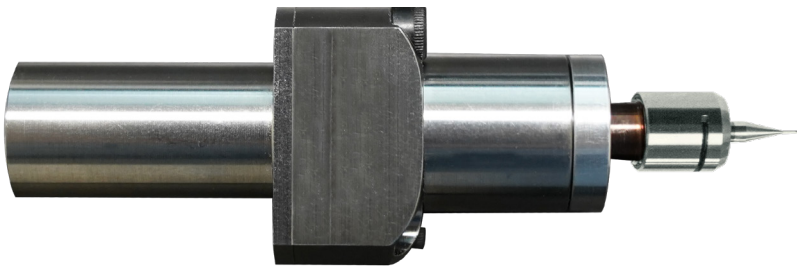
Medical, aviation and metalworking industries rely on Swiss-type Automatic Lathes to get the job done. These machines are in action 7 days a week and operate under enormous cost and time pressure. Economic production success depends on the speed and reliability of motor drive but the outdated technology available has restricted productivity and resulted high costs.



NOT ANYMORE

Our compact new 800LT has a patented governor control so that you speed stays at 80,000 rpm in cut.

Get 5 x faster production with this patented mini motor from Air Turbine Motors®



Our new 800LT operates 24/7 at 80,000 rpm accelerating your production rate.

This powerful patented motor is a low friction direct drive - a mechanism with only 2 moving parts resulting in low heat and great reliability at constant high speed.

Just connect 90PSI, 6.2 Bar dry clean air supply and mill on any Swiss Automatic or sliding head stock lathe.

No control system, no lubricator, no gears or high frequency brushes to burn up. What a difference!

1/8" / 3mm ER Ultra Precision Collet is standard. Optional Collets available

For a Demonstration of Air Turbine Motors® range with no obligation call or email

+1 561 994 0500 - info@airturbinetools.com

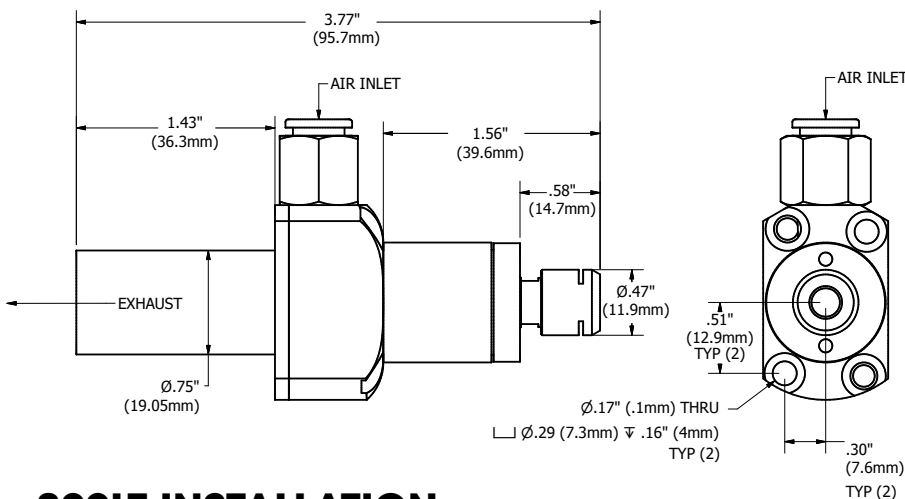
View more Air Turbine Motors® at www.airturbinetools.com

THE 80,000 RPM 800LT - THE GAME CHANGER FOR SWISS AUTOMATIC PRODUCTION

**Drop in 80,000 RPM on your Swiss Style Lathe
Star, Citizen, Tsugami, Traub**

**Governed constant high speed dramatically accelerates your production and cuts your time.
Direct drive reliability reduces your costs. At just 3.5" , 9 mm long the 800LT packs a punch.**

800LT SPECIFICATIONS



General Specifications	800LT
Speed RPM	80,000
Power Rating hp (kW)	0.2 (0.15)
Inlet Air Pressure	90 PSI (6.2 Bar)
Air Consumption Idle cfm (l/s)	3.5
Air Consumption Working Flow cfm (l/s)	5
Sound Level	Less Than 78 dBA
Max Shank Capacity	ER 8 - 1/8" (3mm)
Motor Weight	5.6 oz (0.158 kg)

800LT INSTALLATION

Secure the body of the motor in your gang tool or boring bar holder. Connect a dry clean 90PSI – 6.2 Bar air supply using couplings, connectors and hoses at least 1/4" – 6 mm internal diameter. Install a 3µ filter extractor on the air supply line to assure clean air. Accessory filters available.

Rotation will start as soon as the air supply is connected. Use manual on/off switch or solenoid control. Always follow ANSI standards, safety instructions and wear eye protection.



**For a Demonstration of Air Turbine Motors® range with no obligation call or email
+1 561 994 0500 - info@airturbine tools.com
View more Air Turbine Motors® at www.airturbine tools.com**