



Falcon

SOTP type

Contactless Optical Tool Presetter **Aegis-i**® Series

Simple and Compact!
High-performance presetter - affordable price!

Tightening of a collet holder is possible on the presetter!

Camera Handle — Simple one hand operation.

Fine Adjustment Dial for Z-axis / X-axis — Quick camera positioning by rotating the dial.

Mechanical Clamping — A pneumatic cylinder clamps the holder securely in place, guaranteeing excellent accuracy through repeated mounting of holders.

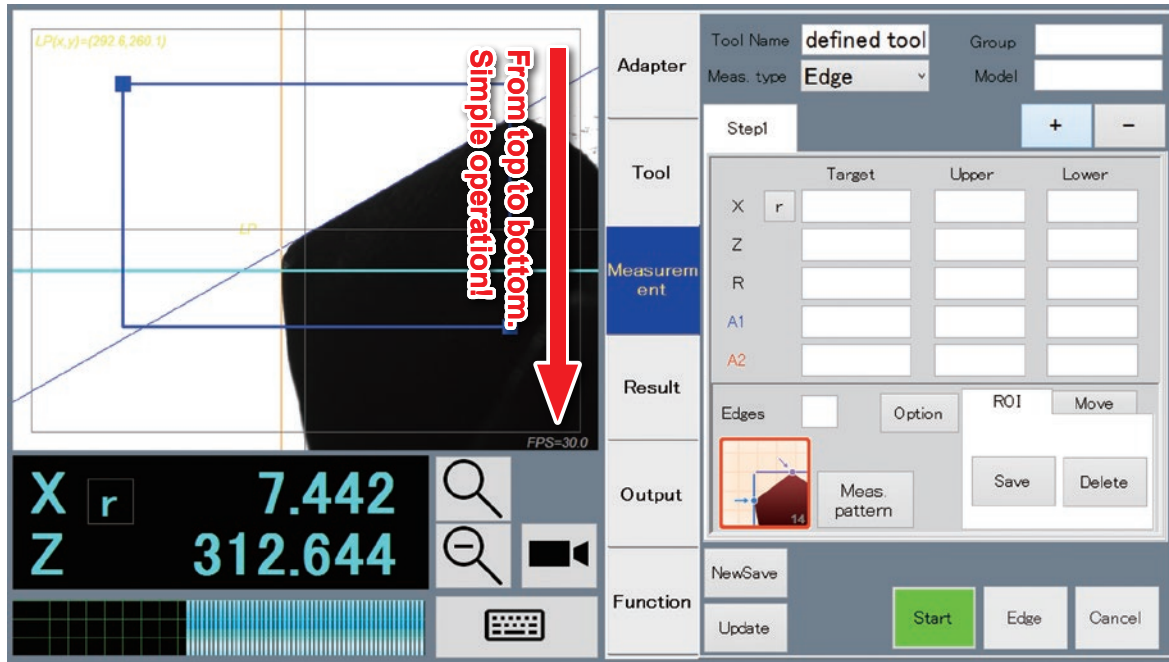
- **Contactless measurement does not damage cutting edges.**
Suitable for expensive cutting tools such as diamond and CBN.
- **Easy operation reduces human error.**

Max Measurement
X-axis : $\varnothing 300\text{mm}$
Z-axis : 400mm

Tightening of a collet holder is possible on the presetter. ※MAX60Nm

Product Movie

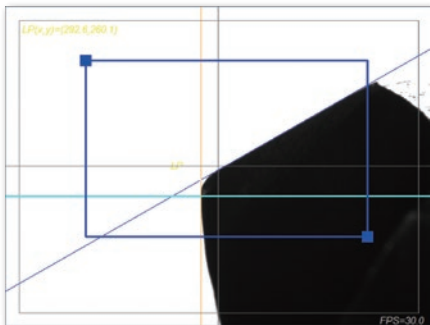
Easy-to-use Software with Tutorial Function



Operation screen lined up in working sequences! Quick operation by switching tabs.
Well-thought-out layout of the operation screen minimizes operation time.

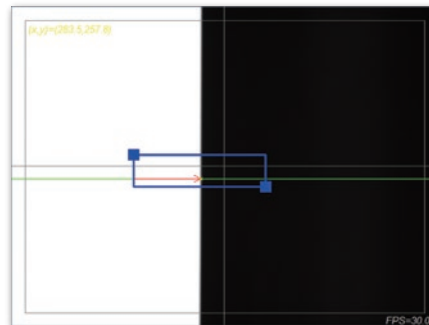
Measurement Functions

① Drill Shoulder Measurement



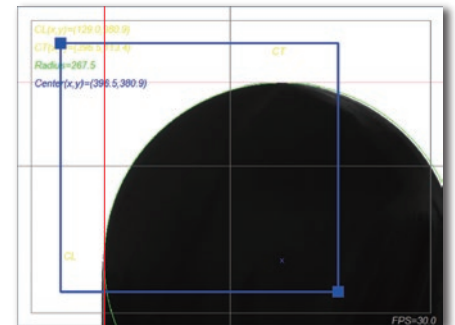
Results that passed or failed to meet the target values can be displayed in a list, or notified with a sound. Results may also be displayed as a graph.

② Runout Measurement of the Cutting Edge



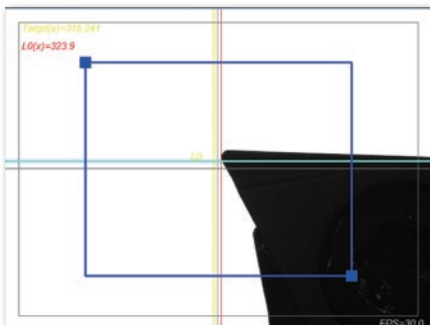
Capture the area you want to measure. Then, turn the spindle 360degrees.

③ Measuring Afterimage



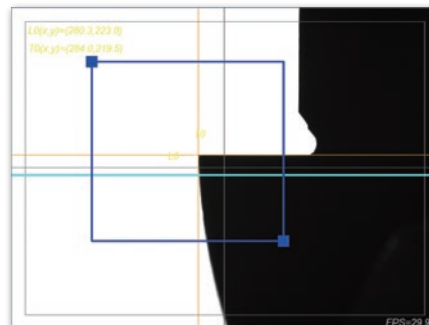
The cutting tool's profile is plotted by rotating the spindle 360 degrees.

④ Special Tolerance



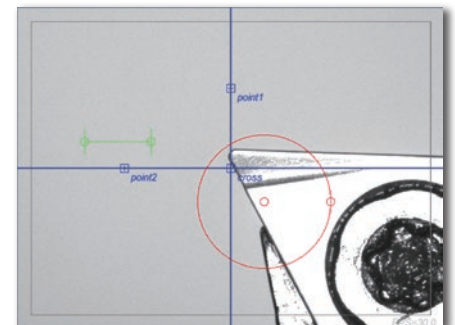
Easy diameter adjustment for boring bars with presetting target shown on the screen.

⑤ Measuring Step Drill



Each step can be measured separately.

⑥ Real Image of Cutting Edge



Wear and chipping on cutting edge can be inspected.

Options

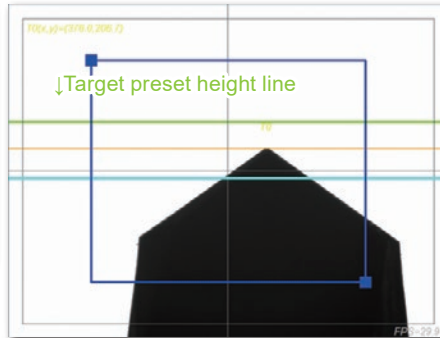
① Stop Measurement When Runout Exceeds Tolerances

Step1					
Detail		Graph			
	X	Z	R	A1	A2
Upper					
Target					
Lower					
1	5.053	246.718			
2	5.042	246.718			
Runout	0.011	0.000			

↑ Value that exceed runout tolerances will be displayed in red.

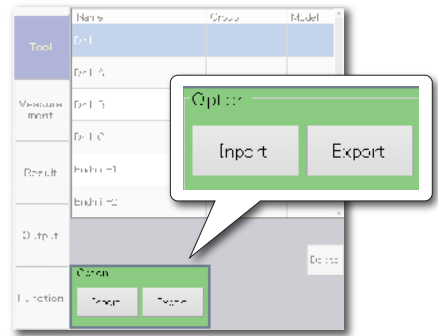
For multi-step measurements, the measurement will stop if runout exceeds the specified tolerances during the runout measurement step. This prevents measurements from running to completion with unacceptable runout.

② Target Value Input



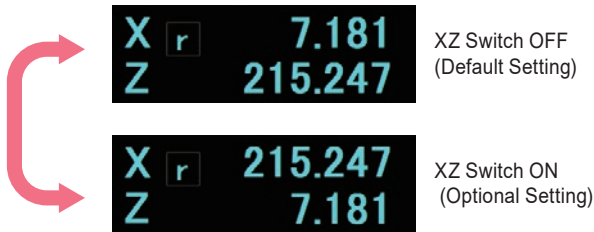
In "Adjustable Mode," the target preset height is displayed on the screen with a green line. Use to offset for cap compression when using collet holders, etc.

③ Import, Export



Tool data is imported and exported in the CSV file format. Use to move data to other equipment, or to synchronize tool data between multiple presetters.

④ Switch the X-axis and Z-axis



Switch the Z-axis so it displays radial measurements instead of vertical, and the X-axis so it shows vertical measurements instead of radial. Use when machining with lathes, etc., in a non-standard direction.

⑤ Base Stand



Code	4940 00041025
Model	SOTP-BASESTAND
Size (mm)	W : 900
	D : 600
	H : 760

There are mounting holes for SOTP unit and regulator.

Adapter (Sold Separately)

To measure tool holders other than BT50 shank size, adapters are necessary. Please contact NT TOOL for details.

For BT, CAT and SK



BT30, BT40, CAT40, SK40

※Please designate the type of retention stud in use.

For HSK



HSK32, HSK40, HSK50,
HSK63, HSK100

For UTS



UTS6350, UTS10080

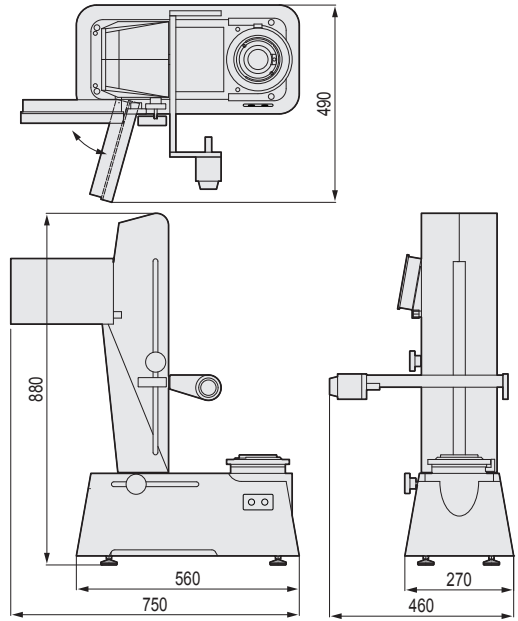
For C



C3, C4, C5, C6

Specifications of SOTP

External dimensions	750x490x880(WxDxH)
Weight	75kg
Power supply	100~240V AC, 50/60Hz
Power consumption	15W
Air pressure	0.4~0.6MPa
Measurement	X-axis ϕ 300mm, Z-axis 400mm *1
Minimum reading	0.001mm
Spindle size	BT50 (Adapters for different spindle sizes available.)
Clamp method	Mechanical clamp (2000N)
Specifications of camera	0.33 million pixel CCD monochrome
Screen magnification ratio	11.5 \times Magnification
Display size	10.1"
Cutting edge measurement range	9.6 x 7.2 mm
Menu manipulation method	Touch panel
Language selection	English, Japanese
Accessories	Filter regulator, Stylus pen
Spindle Rotation Method	Manual



*1 The measurement range of the Z-axis is narrowed by adapter's thickness.
 · Switchable between Inch and Metric display.
 · Specifications and design of the product are subject to change without notice.

Code	Model	Retention Stud	Accessories			
4940 00040011	SOTP-400-1A	PSB-7, PSB-8, PSB-14, PSB-19	Code	Model		Note
4940 00040013	SOTP-400-1C	PSB-17	4944 10000014	AOTP-PRINT-BRO	Label printer	※ Sold Separately.
4940 00040024	SOTP-400-2D	PSB-24	4944 10000015	AOTP-PRINT-BRO-LA	Labels for printer	※ Sold Separately.
4940 00040025	SOTP-400-2E	PSB-50P	4944 10000013	AOTP-DUST-C	Cleaning putty	※ Included with SOTP.

Presetter Series

Contactless Optical Tool Presetter

Contact / Projection Tool Presetters



Aegis-i[®] Eagle (AOTP type)

- Spindle Rotation : Automatic (Option)
- Measurement Range (X-Axis) : 0~ ϕ 400mm
- Measurement Range (Z-Axis) : 0~500mm



NTP-400

- Column Movement Method : Lever (Auto)
- Measurement Range (X-Axis) : 0~ ϕ 400mm
- Measurement Range (Z-Axis) : 50~500mm



NTP-300A

- Column Movement Method : Handle (Manual)
- Measurement Range (X-Axis) : 0~ ϕ 300mm
- Measurement Range (Z-Axis) : 50~500mm

NT TOOL CORPORATION

HEAD OFFICE & FACTORY 1-7-10, Yoshikawa-cho, Takahama-City, Aichi, 444-1386 Japan
IIDA FACTORY 311-1, Osegi, Iida City, Nagano, 395-0157 Japan
 SALES OFFICES in JAPAN (TOKYO / NAGOYA / OSAKA / HIROSHIMA)

CHINA OFFICE Room503A, Xincheng building 167 Jiangning Rd., Jing'an District Shanghai 200041 P.R.China
NT USA CORPORATION 318 Seaboard Lane Suite 301 Franklin TN, 37067 U.S.A.
NT TOOL DE MEXICO S.A. DE C.V. Blvd. Aeropuerto No.648, Local 5, Col. San Jose el Alto, Leon, Guanajuato, Mexico C.P. 37545
NT TOOL EUROPE GmbH Siemensstrasse 17A, 61449 Steinbach / Ts., Germany
NT TOOL (THAILAND) CO.,LTD. 222 Moo 1, Hi-tech Industrial Estate, Banpho, Bang pa-in, Ayutthaya 13160, Thailand
PT. NT INDONESIA Kawasan Industri Jababeka Tahap 6, Blok B 2A, Desa Jatireja, Kecamatan Cikarang Timur, Kabupaten Bekasi, 17530, Indonesia

HEAD OFFICE : www.nttool.com (Web in English available)
NT USA CORPORATION : www.nttoolusa.com **EUROPE OFFICE :** www.nttooleurope.com

Tel. 81-(0)566-54-0101 Fax. 81-(0)566-54-0111 E-mail : osb@nttool.co.jp
 Tel. 81-(0)265-25-5200 Fax. 81-(0)265-25-5225 E-mail : iidaplant@nttool.co.jp

Tel. 86-(0)21-6361-9540 Fax. 86-(0)21-6360-7845 E-mail : nt-shanghai@nttool.co.jp
 Tel. 1-615-771-1899 Fax. 1-615-771-0121 E-mail : sales@nttoolusa.com
 Tel. 52-477-194-4585 E-mail : sales@nttool.com.mx
 Tel. 49-(0)6171-91639-0 Fax. 49-(0)6171-91639-90 E-mail : info@nttooleurope.com
 Tel. 66-(0)3531-4180 Fax. 66-(0)3531-4182 E-mail : nt_thai@ksc.th.com
 Tel. 62-(0)212-851-8066 Fax. 62-(0)212-851-8067 E-mail : nt-indonesia@nttool.co.jp



TECHNO MAIL

technomail@nttool.co.jp

For technical question,
 please contact us by technomail.

WORLDWIDE NETWORK

