

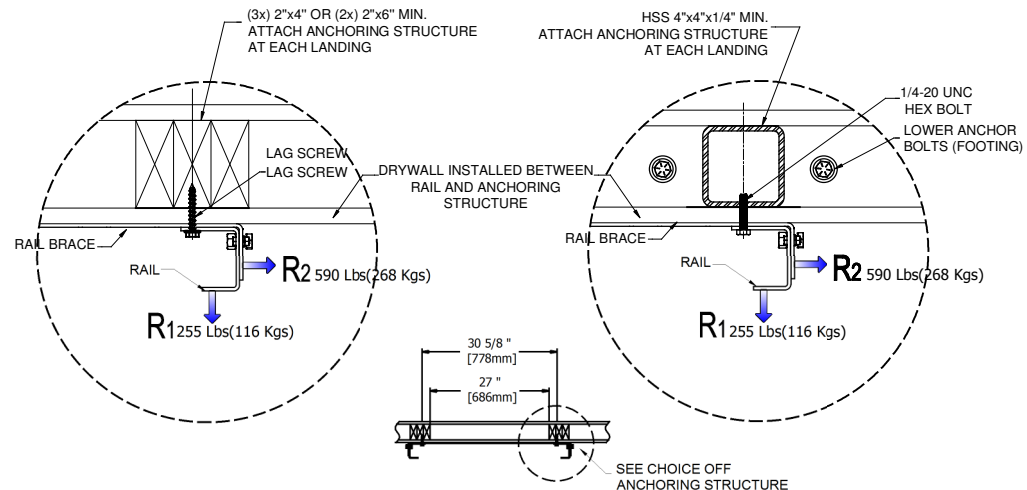
1 ISOMETRIC VIEW
AR-130-T (1000Lbs)

NOTE:

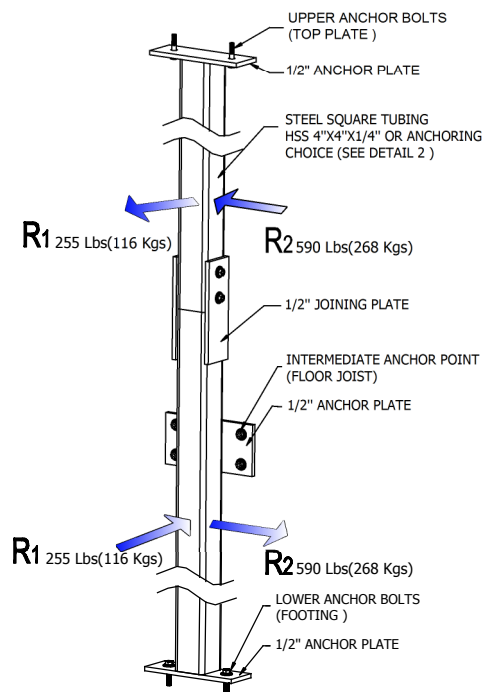
1: THIS DRAWING ILLUSTRATES A TYPICAL SUPPORTING WALL STRUCTURE INSTALLATION AND ILLUSTRATED DETAIL SHOULD BE CHANGED WITH MATERIAL CHOICE.

2: THE CUSTOMER IS RESPONSIBLE TO HAVE THE LINK BETWEEN THE SUPPORTING WALL STRUCTURE AND THE BUILDING CALCULATED BY A STRUCTURAL ENGINEER.

3: THE MAXIMUM DISTANCE BETWEEN ANCHOR POINTS IS 12' [5658mm].



2 TOP VIEW DETAIL
INSTALLATION



3 ELEVATION DETAIL
HSS ANCHORING

GENERAL DOCUMENT,
INFORMATIONAL PURPOSES ONLY



Les Escalateurs Atlas Inc.

3175 Boul. Choquette
St-Hyacinthe (Québec)
J2S 7Z8, Canada
Tel: (450) 796-5708
Fax: (450) 250-5110

Code: B-355 / 613

Safety: ± 1/16"

Drafter: M. Debusschere

Date: 04-10-2018

Title: AR-130-T (1000Lbs) ANCHORING
STRUCTURE DETAILS

Révision: 3

No drawing: F-07

Status: INFORMATION

No Sheet: 1/1