

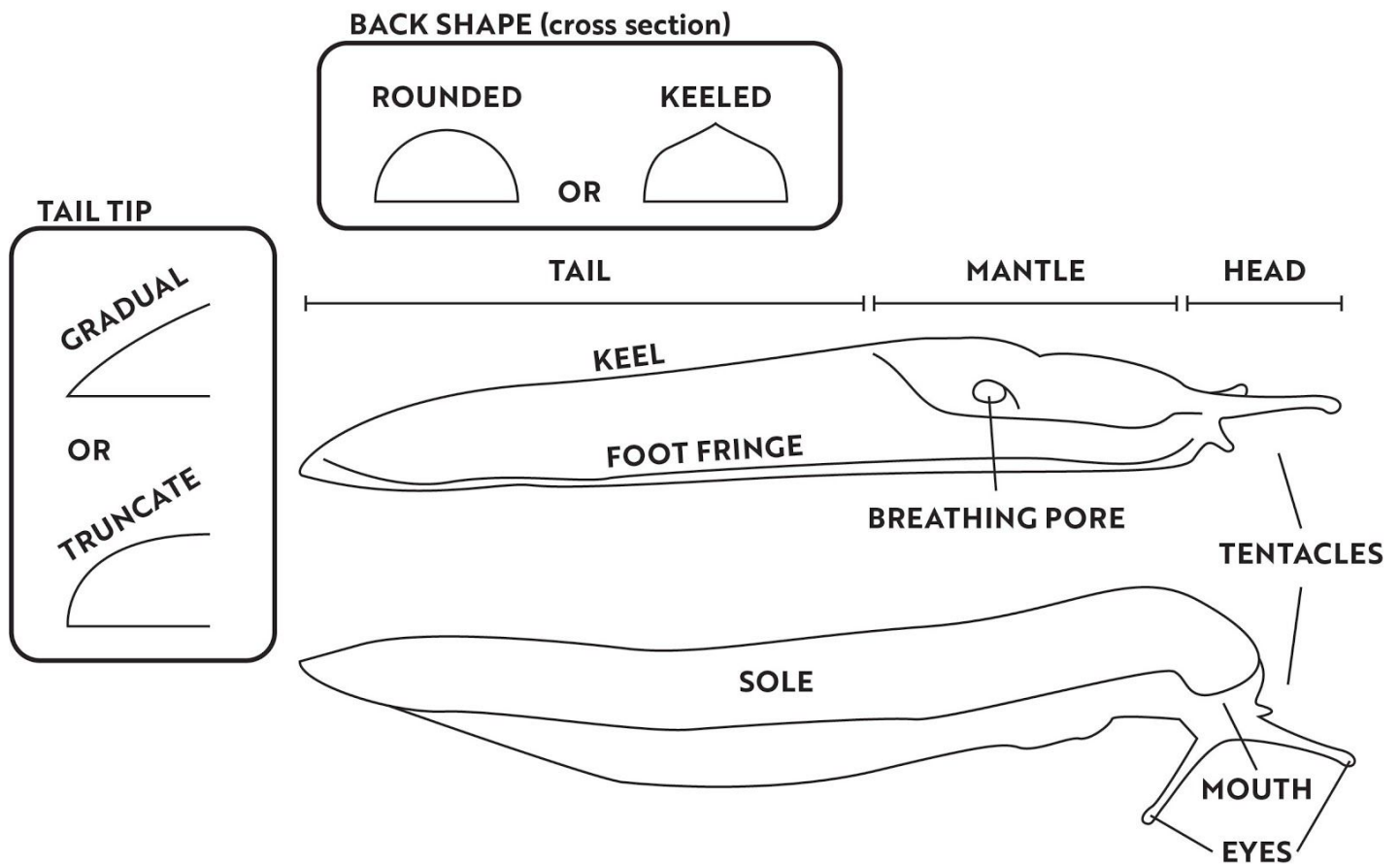
A Slug Story

Pre-Activity Questions

- How do slugs and snails move?
- If you were a slug or snail, how would your life be different?
- What are some things slugs or snails need in their habitat?

Activity

- Let's take a closer look at a slug.



- Is a slug a snail without its shell? Kind of. Snails and slugs are related, but slugs evolved to internalize their shell. Watch this video on [snails, slugs, and - BONUS - semi-slug](#).
- Learn more about our [slimy friend, the Banana Slug](#).

A Slimy Adventure

Materials

- Paper
- Pen or Pencil
- Colored pencils or Markers (optional)
- Ruler
- Camera (optional)

Steps

1. Go outside and find a slug or snail.
 - Having trouble finding one? Look in cool moist places like shaded leaf litter or at the base of plants with large flat leaves.
2. Place the slug on your **paper** and let it move around OR draw the mucous trail your slug leaves behind on the ground.
3. Note everything you notice about your slug and its trail.
 - Hint: Use the diagram on the first page and note the shape, size, and color of each body part.
4. Write a poem or short story about your new slimy friend.

Post-Activity Questions and Activities

- If you let the slug crawl on your paper, make art out of the trail left behind.
- Do slugs and snails remind you of any other animals that are soft and squishy?
 - Hint: Some of their closest relatives live in the ocean!
- Create the ideal outdoor slug or snail habitat and put your new friend in it. Observe and take notes every day for three days.
 - Don't forget to feed your wild friend and keep their temporary home moist.
 - If you feed it a piece of watermelon, you can hold the opposite end and feel the radula (science word for a snail's tongue) moving!
 - Release your snail back where you found it.
- What sound do snails make? Check out [this video](#) of a snail in the quietest room in the world with the best sound recording equipment.

Adapted from Royal Horticultural Society (2020). Spotter Guide. Retrieved from <https://schoolgardening.rhs.org.uk/Resources/Spotter-Guide/Identify-a-slug-body-parts>