

Electric Powered

CALIX FORCED CIRCULATION HEATER



CEPFCH-300124



Calix Forced Circulation Heater (FCH) is a hose mounted engine block heater with an integrated circulation pump that spreads the heat faster and more evenly in the engine, making it more efficient. Additionally, the FCH is easier to install compared to a heater with a separate circulation pump as FCH is more flexible in the positioning of the heater.

Function

Hose installed heater, designed to pre-heat applications such as coolant circuits. Pump forced circulation (230 V). PTC heating element.

Applications

Machinery engines

Features

Integrated circulation pump

Flexible positioning

Self-resetting overheat protection at +120°C

Benefits

Spreads heat faster and more evenly in the engine

Easier to install due to integrated pump

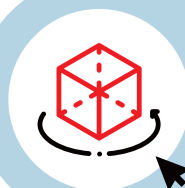


ARCTIC-FOX®

Arctic Fox®

De Stok 24
4703 SZ Roosendaal
The Netherlands
T. +31 (0)165 55 92 45
info@arctic-fox.eu
www.arctic-fox.eu

Productivity won't wait for a warm day.

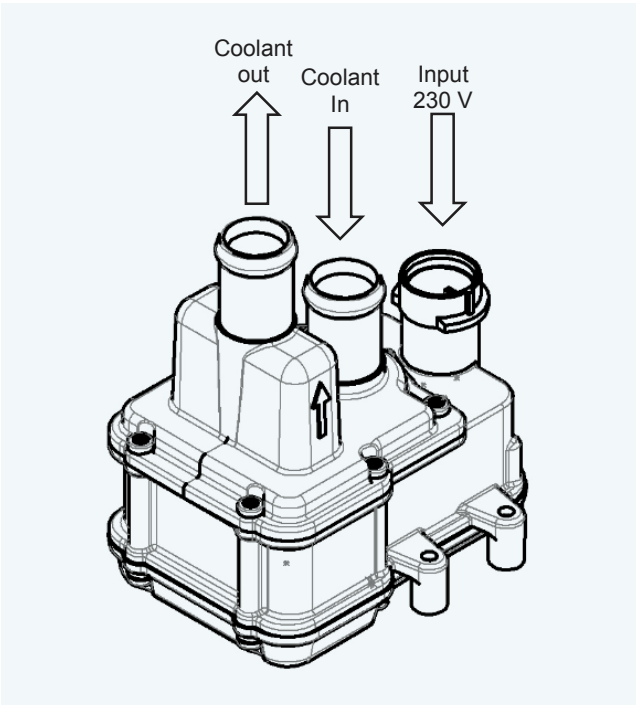
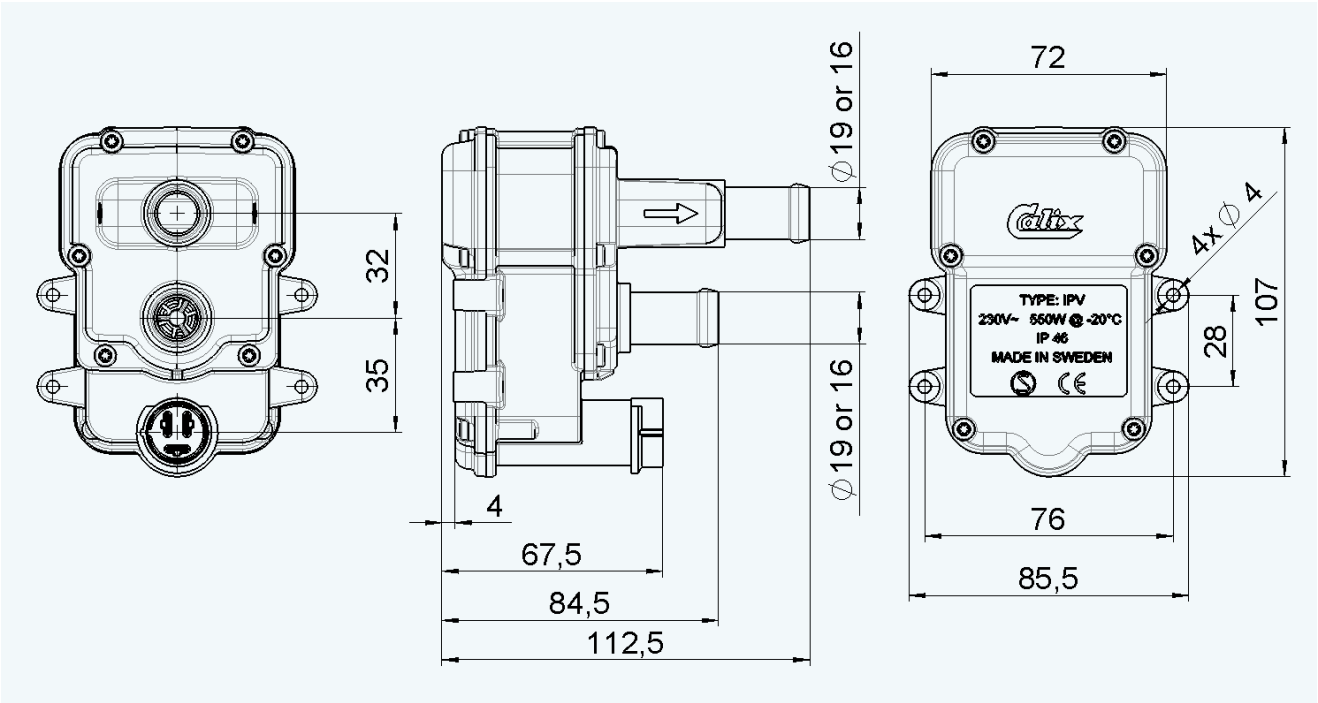


**Using 3D software?
Try out our models!**

Contact us at info@arctic-fox.eu
and start engineering.

Specifications (dimensions in millimeters)

Productnumber	Watts	Volts	Pump Capacity	Connection Ø	Dimensions L x H x S
1710000 FCH Ø16 KIT	550 W	230 VAC	~8 L / min	16 mm	65 x 90 x 115 mm
1710010 FCH Ø19 KIT	550 W	230 VAC	~8 L / min	19 mm	65 x 90 x 115 mm



Need more measurements? Technical drawings are available on request. Please contact us at info@arcticfox.eu or call +31 (0)165 55 92 45