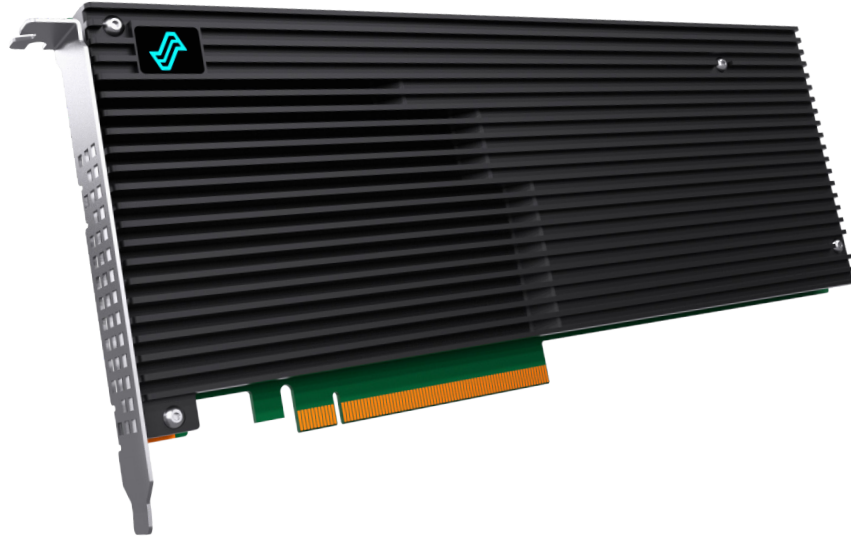




# Liquid LQD4500 IO Accelerator

## Elevate Data Performance



In data-driven environments, unlocking the full potential of data performance is paramount. Introducing the Liquid Element LQD4500 IO Accelerator — an advanced storage solution engineered to shatter performance barriers and redefine what's possible. Designed to deliver uncompromised data IO performance and responsiveness, the LQD4500 empowers you to accelerate results.

With the capability to deliver an astounding 4 million IOPS of random read performance, coupled with over 26 GB/s of read throughput, it surpasses conventional SSDs, providing the robust foundation your data-intensive applications demand. The ultralow transactional latency of just 10 microseconds ensures that every data interaction occurs at the speed of now.

Storage demands are experiencing exponential growth, and with capacities reaching up to a remarkable 32 terabytes, the LQD4500 equips you to handle vast datasets without compromise. Whether you're navigating complex simulations, conducting expansive analytics, or managing rich multimedia content, the LQD4500 offers substantial headroom.

- > Ultra Fast PCIe Gen 4.0 x16 Interface
- > Performance of 4 M IOPS and 26 GB/s
- > High-capacity NVMe SSD, up to 32 TB
- > Enterprise-class Power Failure Protection

---

### Key Features

- |                                |                                    |
|--------------------------------|------------------------------------|
| - Ultra-High Performance       | - Active Power Management          |
| - PCIe 4.0 x16 Interface       | - Advanced ECC and Data Protection |
| - NVMe 1.3 Protocol            | - Advanced Error Recovery          |
| - High Capacity, up to 32 TB   | - Active Telemetry Monitoring      |
| - Single Width FHFL            | - Low Overhead Architecture        |
| - Plug-n-Play Compatibility    | - No Host CPU or DRAM Off Load     |
| - UEFI Boot Support            | - Software or OS RAID Supported    |
| - Enterprise Grade Reliability | - Data Protection                  |
| - Power Loss Data Protection   |                                    |
| - Active Thermal Throttling    |                                    |



## Technical Specifications

Model	Liquid LQD4500 IO Accelerator
Raw Capacity	Up to 32TB
NAND Type	TLC 3D NAND
Read Bandwidth	Up to 26GB/s Throughput
Write Bandwidth	Up to 13GB/s Throughput
Random 4K Read IOPS	Up to 4M IOPS
Random 4K Write IOPS	Up to 900K IOPS
Min Read Latency	70µs
Min Write Latency	10µs
Protocol	NVMe 1.3
Bus Interface	PCI Express 4.0 x16
Endurance	Up to 61.53 PBW / 2 DWPD*
Security	256-bit AES Data Encryption
Weight	20 oz
Warranty	3 years or maximum endurance used
Form Factor	FHFL Single Width
Operating Temperature	Op: 0 to 55 deg C / Non-Op: -40 to 75 deg C
Power	Active: ~65 W Typical
Airflow	Min 400 LFM
Humidity	5% to 95% (non-condensing)
Altitude	0 ft to 10,000 ft
Operating Systems	Windows, RHEL, SLES, CentOS, Solaris, SUSE, VMware
Agency & Safety	UL, CB, CE, CCS, KCC, HF, BSMI, VCCI, FCC Class B and CISPR Class B, JEDEC

### Data Center Series

7.68TB: L4500-007T68-040

15.36TB: L4500-015T36-040

30.72TB: L4500-030T72-040

### Enterprise Series

6.4TB: L4500-006T40-040

12.8TB: L4500-012T80-040

25.6TB: L4500-025T60-040

Please contact your sales rep for more information and to determine which configuration is best to accomplish your company's specific goals. Specification subject to change without notice.

### Contact Information

Liquid Inc.  
11400 Westmoor Circle, Suite 225  
Westminster, CO 80021  
office: +1 303.500.1551  
email: sales@liquid.com

\*PBW/DWPD table per capacity/configuration available upon request