

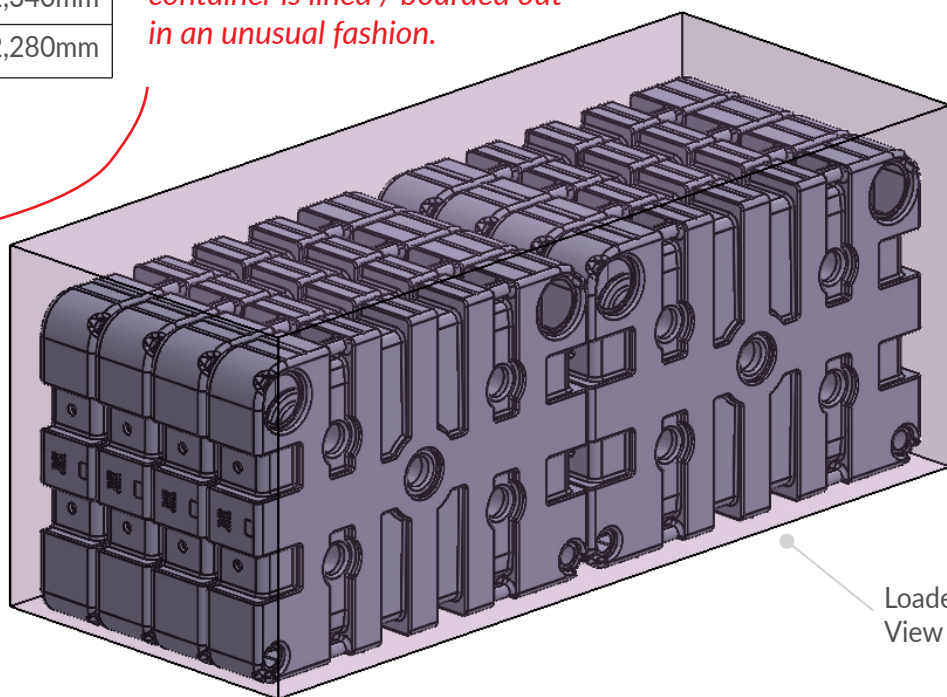
# Tuff Tank - Plastic Effluent Tank - Containerised

## 20 foot standard container - 8 x 500 gallon tanks

Container Dimensions			
Internal Dimensions		Door Opening	
20'ST - 20' x 8' x 8'6"		20'ST - 20' x 8' x 8'6"	
Length	5,900mm	Width	2,340mm
Width	2,352mm	Height	2,280mm
Height	2,393mm		

### VERY IMPORTANT NOTE:

*Tank dimensions may vary by +/-3% owing to ambient temperature fluctuations. This may affect the quantity shipped especially if the resultant clearance is tight and/or if the container is lined / boarded out in an unusual fashion.*

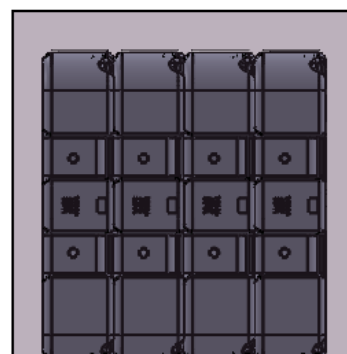
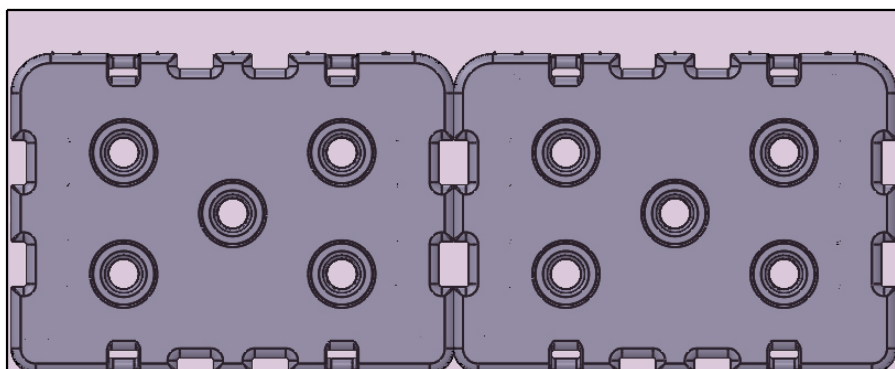


Loaded View (3D)

Load Dimensions*		Clearance
Length	5,840mm	60mm
Width	1,940mm	412mm
Height	2,100mm	293mm
*8 x Tuff Tank 500 - Mk. 5		

Side View (length)

End View (width)



**\*Please note:** tank sizes quoted are subject to a +/-3% variation owing to temperature expansion and contraction. The 292cms base length (TT500) may therefore range from 283-301cms, which may affect the number of tanks we can ship.

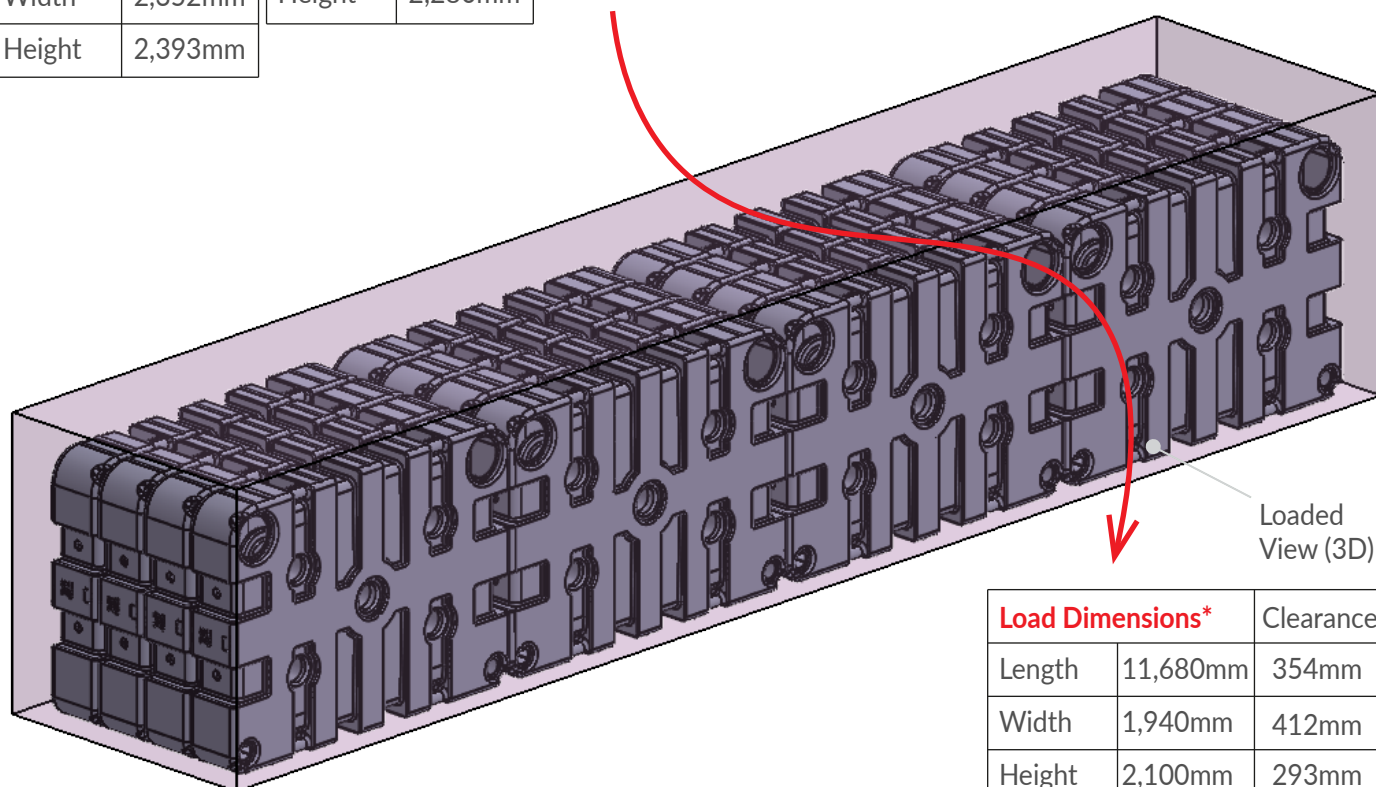
# Tuff Tank - Plastic Effluent Tank - Containerised

## 40 foot standard container - 16 x 500 gallon tanks

Container Dimensions			
Internal Dimensions		Door Opening	
40'ST - 40' x 8' x 8'6"		40'ST - 40' x 8' x 8'6"	
Length	12,034mm	Width	2,340mm
Width	2,352mm	Height	2,280mm
Height	2,393mm		

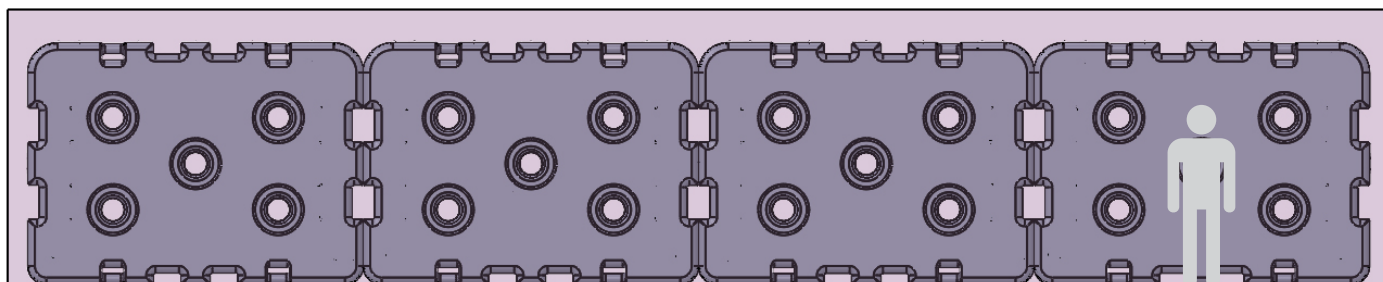
### VERY IMPORTANT NOTE:

*Tank dimensions may vary by +/-3% owing to ambient temperature fluctuations. This may affect the quantity shipped especially if the resultant clearance is tight and/or if the container is lined / boarded out in an unusual fashion.*



Side View (length)

Load Dimensions*		Clearance
Length	11,680mm	354mm
Width	1,940mm	412mm
Height	2,100mm	293mm
*16 x Tuff Tank 500 - Mk. 5		



**\*Please note:** tank sizes quoted are subject to a +/-3% variation owing to temperature expansion and contraction. The TT500 292cms base length may therefore range from 283-301cms, which may affect the number of tanks we can ship.