

# BE PARTNERS IN THE GOSPEL IN EUROPE



EUROPEAN  
MISSION  
FELLOWSHIP



IN STARK CONTRAST  
TO ITS 'CHRISTIANISED'  
EXTERIOR, EUROPE NOW  
HAS THE **SMALLEST**  
**PROPORTION OF BIBLE-**  
**BELIEVING CHRISTIANS**  
ACROSS ALL THE  
CONTINENTS.

**Secular atheism is the prevailing and fastest growing ideology in Europe.**

Operation World estimates the percentage of professing evangelical believers in Europe to be 2.5% making it the least evangelical continent on earth. Many European countries have fewer than 1% evangelical Christians. In all there are more than 700 million European men and women without the Saviour.

The outward marks of imposing and ornate religious buildings in every town and village, and the pervasive influence of Roman Catholicism and Eastern Orthodoxy, which in some countries is so deep-rooted as to be considered part of the national identity, belie the fact that so few have heard and believed the gospel of grace.

The challenges facing the gospel abound: the stampede towards secularism and consumerism, the rapid growth of Islam, the negative influence of Roman Catholicism and Eastern Orthodoxy and the plague of the prosperity gospel.

The gospel need in Europe is as great now as it has been since the Macedonian call to the apostle Paul, "come over and help us." Acts 16:9



2.5%

OPERATION WORLD ESTIMATES THE PERCENTAGE  
OF PROFESSING EVANGELICAL BELIEVERS IN  
EUROPE TO BE 2.5%



The *gospel need* in  
Europe is as great  
now as it has been  
since the Macedonian  
call to the apostle  
Paul, "*come over  
and help us*".

# GOSPEL OPPORTUNITY IN EUROPE

*At such a time as this,  
the gospel opportunities  
are there for us to grasp.*



## The opportunities for the Gospel have never been greater in Europe.

Although the challenges are daunting, yet the opportunities for the gospel are great. Religious freedom has been championed across Europe and, while under threat, remains of great benefit to Christian outreach. The unhindered movement of people at the heart of the European Union ethic gives country access to missionaries which is unrivalled in other continents.

With many people becoming disillusioned with establishment religious institutions, often searching elsewhere for a meaning in life, it is vital that the message of the gospel of grace is offered freely and widely.

And with so many people from Muslim and Hindu regions coming to Europe to study or as migrants, the opportunity to reach out with the gospel is so much greater than in their countries of origin.

The widespread knowledge of the English language in Europe also means that it has never been easier to communicate the gospel and train people up in Bible-centred ministries, helped by our rich store of evangelical learning.

At such a time as this, the Gospel opportunities are there for us to grasp.



**THE UNHINDERED  
MOVEMENT OF PEOPLE  
AT THE HEART OF THE  
EUROPEAN UNION ETHIC  
GIVES COUNTRY ACCESS  
TO MISSIONARIES WHICH  
IS UNRIVALLED IN OTHER  
CONTINENTS.**

# EMF'S APPROACH

EMF has worked in Europe for over 60 years, now supporting over 45 missionaries or missionary couples (including retired missionaries who continue to serve their churches) working in 15 Countries in Europe, and has an outstanding history in evangelism, church planting, training and supporting church leaders. But its approach is distinctive, in a number of ways:



1

## COMMITTED TO HISTORIC BIBLICAL CHRISTIANITY

EMF is committed to reformed evangelical Christianity, and at the heart of all we do is the gospel of God's grace.

2

## WORKING THROUGH LOCAL CHURCHES

We love the local church – we believe there's never been a greater need for churches which are Christ-centred, gospel-driven, theologically solid and culturally connected. EMF's approach is to channel our support through local churches in Europe.

3

## SUPPORTING INDIGENOUS WORKERS

We predominantly support workers who belong to the community they are reaching (over 80% of EMF missionaries are indigenous to the culture). They know the language, culture and traditions.

4

## PLANTING AND GROWING CHURCHES

Our primary focus, under the Lord's hand, is to see the planting of new evangelical churches in Europe and building up existing churches, often through training and supporting leaders. But our activities extend beyond this to publishing, children's work and short-term mission.

5

## ENABLING PARTNERSHIP BETWEEN CHURCHES

Our aim is to enable churches in the UK and beyond with a heart for European mission to partner the missionaries and their churches, with an ever-growing richness in fellowship.

6

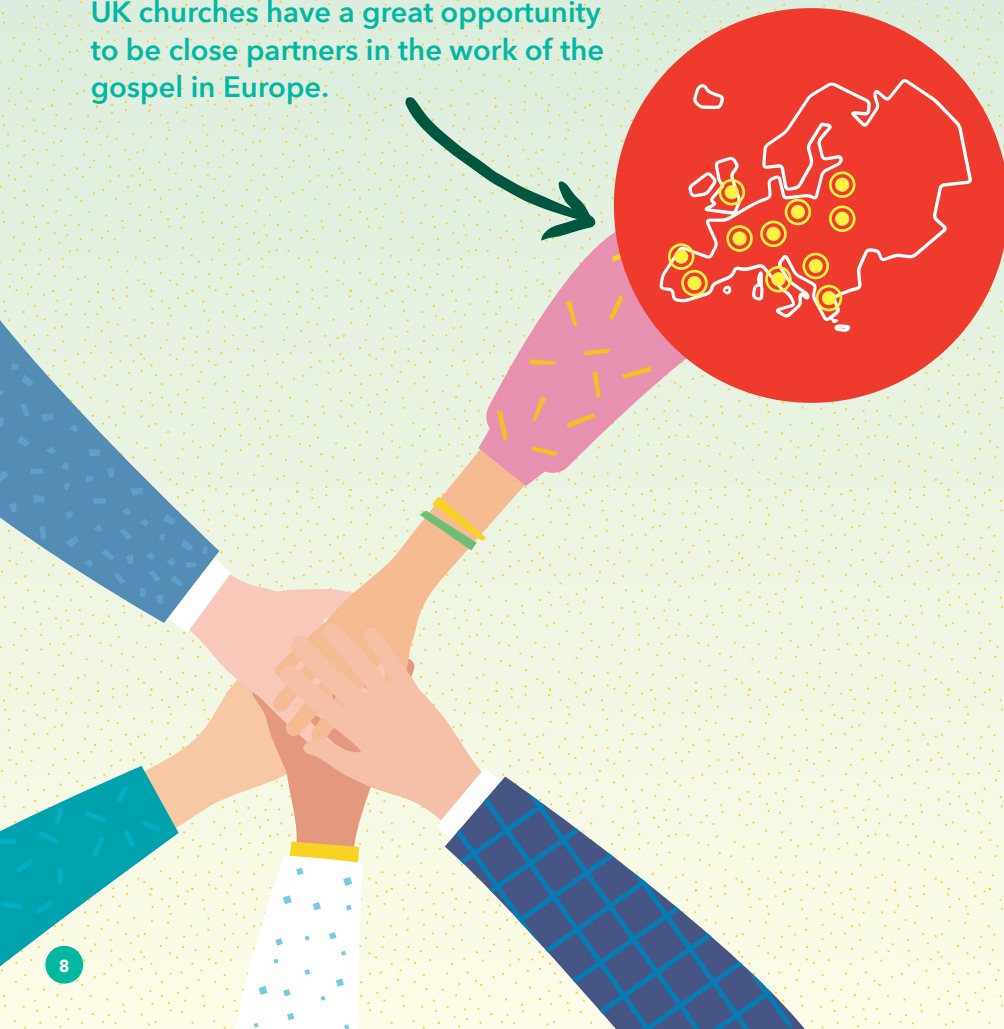
## COMMITTED FOR THE LONG TERM

We are committed to working with local churches for the long-term growth of the evangelical church in the community. We have supported many of our missionaries for over 30 years of service, and now are seeing the next generation of missionaries coming from these Christian fellowships.



# BE PARTNERS IN THE GOSPEL

UK churches have a great opportunity to be close partners in the work of the gospel in Europe.



In 2 Corinthians 8 & 9 Paul encourages the church in Corinth to support the churches in Jerusalem, leading to mutual thanksgiving: "Because of the service by which you have proved yourselves, others will praise God for the obedience that accompanies your confession of the gospel of Christ" (2 Cor. 9:13 NIV).

Our goal in EMF is to enable churches in the UK and beyond to partner with workers in Europe and thus be partners in the work of the gospel, leading to the same mutual thanksgiving.

Since most of the EMF missionaries are indigenous, few of the missionaries have a UK sending church and yet the support of UK churches in prayer, with finance and enjoying fellowship, would be an immense blessing to both.

The ideal model for partnership is for UK supporting churches to partner with specific missionaries, enabling a long-term relationship to be built. Such relationships can involve exchange of prayer requests, internet video calls, deputation visits, targeted giving, and even visiting or engaging in short-term mission trips.

We also support students being trained for the work of the gospel in the UK, so there is a great opportunity for UK churches to partner with those students and continue with them into their missionary work.

The ideal model for partnership is for UK Supporting Churches to partner specific missionaries, enabling a long-term relationship to be built.





# TWO-WAY PARTNERSHIP

While we may feel weak and with little to offer, yet there are ways in which we can humbly help the work of mission in Europe; but we can also learn a great deal from churches in Europe:

## PARTNERSHIP IN GIVING

The costs of supporting missionaries in Europe can often be high – significantly more than in less developed parts of the world. But the UK is a wealthy country and we are in a unique position; if we don't support the work of the gospel in Europe then who else can and will?

## PARTNERSHIP IN PRAYING

We worship an all-powerful God and have the privilege of coming boldly before his throne of grace. The needs of the gospel in Europe are great, and we can play a vital role in presenting these needs before his throne.

## LEARNING FROM CHURCHES IN EUROPE

In many areas, the evangelical churches in Europe have much to teach us about presenting the gospel in different cultures. Whether that be working within a community which is almost entirely Roman Catholic, or working in a confident post-modern secular culture like France, or reaching out to newly immigrant Muslim communities.

## SHARING OUR EVANGELICAL HERITAGE

In the UK we have a rich reformed evangelical heritage, with a treasure-store of literature and biblical learning which Christians in other European countries would long for. But with English so widely spoken, there is every opportunity to share this with churches in Europe.

## SUPPORTING THOSE WHO SUFFER

Many of our evangelical brethren in Europe endure sacrifices we rarely see in the UK. In most European countries, the evangelical church is despised or regarded as an extreme sect. Many of the gospel workers live on small incomes and have to take on other work to fund their ministries.

# PARTNERSHIP IN THE GOSPEL IN SPAIN

A great example of **fellowship in the Gospel** has been the partnership between José and Virtudes Moreno and their church in Alcázar de San Juan, Spain, and the Welwyn Evangelical Church in the UK.

**NIGEL POUNTNEY,**  
member of the Welwyn  
Evangelical Church

Our partnership with José and Virtudes goes back to their EMF student days, and the period José under-studied our Pastor, Bob Sheehan, after that time. Since then, Welwyn Evangelical Church has taken an active interest in how the work in Alcázar de San Juan has grown and developed, and we give thanks to the Lord for the many facets of their ministry which we have sought to support through prayer and financial giving. We value our brother and sister dearly and always enjoy the visits to us, his preaching, and the news we receive of the work.



**JOSÉ MORENO,**  
pastor of Iglesia Cristiana Evangélica  
in Alcázar de San Juan, Spain

Our contact with Welwyn Evangelical church goes back to the 80's when we were students at the EMF School of Biblical and Theological Studies. The church took me on as student pastor alongside Bob Sheehan. We developed very strong bonds of affection with Welwyn Evangelical church. Indeed, we were commended to the work in Spain by the Welwyn Church. This meant that right from the beginning we had the strong backing of the church for the work we felt called by the Lord to do in Alcázar de San Juan. In practical terms, this has meant prayerful and financial support through EMF from the Welwyn church. Regular visits to the Welwyn church to report on the work of the Gospel here have been part and parcel of our ministry (Acts 14:24-28). Whenever we are there we feel at home in the church. Over the years, as the church here has grown, we have also begun to pray, as a church, for the church in Welwyn (also for other churches that have also been greatly interested in the work here). Prayer for EMF, the churches and people in the UK are a feature of our regular church prayer life to this day.

We give thanks to the Lord for this fellowship in the Gospel over the years. It has been a source of spiritual growth in the faith as we have tried to develop and live according the pattern set for us in the Word of God in this relationship of the churches in the common task of preaching Christ and Him crucified so that He may be glorified in the salvation of his own people.

# PARTNERSHIP IN THE GOSPEL IN POLAND •

Another example of Gospel partnership has been between the Magherally Presbyterian Church and missionaries Dawid and Agnieszka Koziół, based in Zywiec, southern Poland.



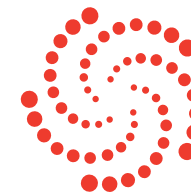
**DAWID KOZIOŁ,**  
pastor of the evangelical church in  
Zywiec, Poland

Being a missionary with EMF for almost twenty years I have learned to be thankful for all kinds of support and encouragements that came from the people and churches I know, as well as those who are unknown to me. However, the partnership with the Church whom you know is always very special. Our partnership with Magherally Presbyterian Church began in 2017. The church in Zywiec recognizes it as a real privilege to know our partners who “hold the line” while we are seeking to bring the Gospel to Poles. Yet it is more than financial and prayerful support, it is the personal relationships and familiarity that help a lot to grow into mutual understanding of our situations. Because of that, our church learns a lot about the situations and challenges in UK and that helps to remind us of the needs of UK churches. Personally, it was real blessing to visit our partner church and to experience their hospitality and friendship. They really welcomed us as brothers, knowing our challenges and blessings. Hopefully sometime we will have return visit from our partner Church, that really helps to build the trust and friendship. It is always good to know that someone thinks and prays for us.

**REV NIGEL KANE,**  
Minister of the Magherally  
Presbyterian Church

A couple of years ago we had a midweek meeting focused on the work of EMF during which the suggestion of partnering with a church fellowship came up. This caught the imagination of our Kirk Session who liked the idea of having a link to a specific place and people rather than just having a general knowledge of lots of places and people. From this, our Kirk Session decided to partner with Dawid and Agnieszka Koziół in Zywiec, Poland. So, for the past two years, we have been exchanging news and prayer requests, and supporting Dawid and Agnieszka financially. It was a pleasure to have Dawid and Agnieszka, and their son Samuel, visit our congregation recently, along with Phil Dunn. Hopefully some of us will be able to reciprocate in the near future.

We have been blessed to hear how God is working in Poland, and to have the folks in Poland pray for us as we labour here. We would heartily encourage other congregations to become involved in a church partnership because it has helped us to a heart for a specific group of God’s people.





# GETTING MORE INVOLVED IN GOSPEL PARTNERSHIP?

If your church is interested in developing closer partnership links with missionaries in Europe, please get in touch with us. We'd be delighted to explore the possibilities and answer any questions you have.

## Northern Ireland Representative:

**Phil Dunn**

[phil.dunn@europeanmission.org](mailto:phil.dunn@europeanmission.org)

+44 (0)28 2766 4214

---

## Church Partnership Coordinator:

**Martin Tatham**

[martin.tatham@europeanmission.org](mailto:martin.tatham@europeanmission.org)

+44 (0)7759 928534

---

## Headquarters:

The Old Rectory,

Main Street,

Glenfield,

Leicester LE3 8DG

[hq@europeanmission.org](mailto:hq@europeanmission.org)

+44 (0)116 232 5192



**EUROPEAN  
MISSION  
FELLOWSHIP**