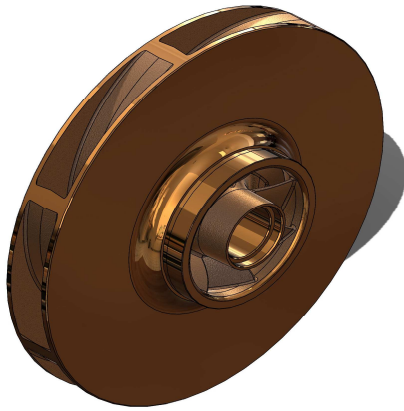


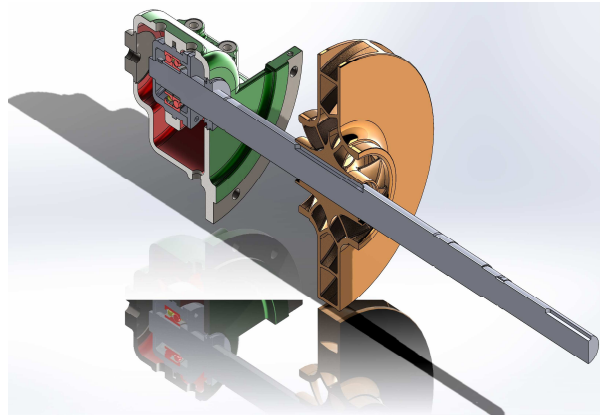


Emnor Mechanical Inc.
20 Depew Street
Hamilton, Ontario
L8L 7H8

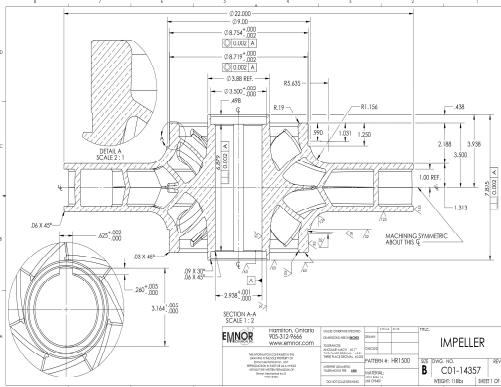
**EMNOR MANUFACTURES A COMPLETE NEW ROTATING ELEMENT.
ALL PARTS WERE REVERSE ENGINEERED.**



IMPELLER 3D MODEL



ELEMENT 3D MODEL



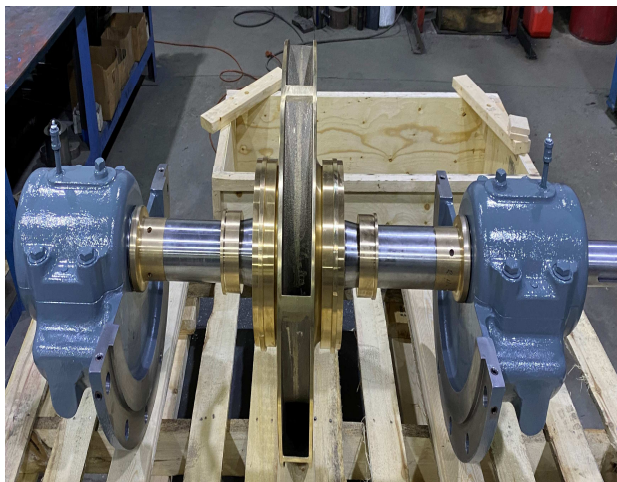
IMPELLER MACHINING DRAWING



DRIVE END



NON-DRIVE END



COMPLETE ELEMENT