

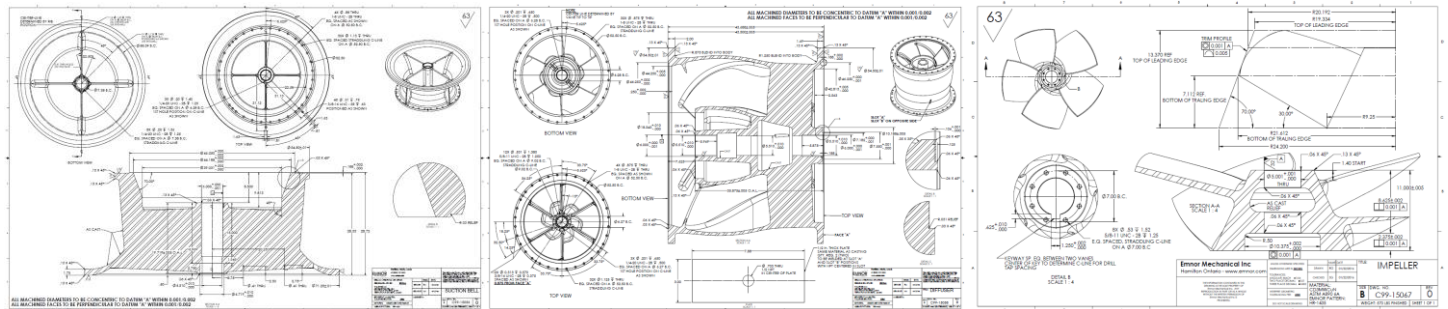


Emnor Mechanical Inc.
20 Depew Street
Hamilton, Ontario
L8L 7H8

VERTICAL PUMP REPAIR AND MANUFACTURING



ON-SITE MEASUREMENT OF PARTS



CREATION OF 2D PRODUCTION DRAWINGS



CASTING SIMULATION

FOUNDRY TOOLING

CASTING



Emnor Mechanical Inc.
 20 Depew Street
 Hamilton, Ontario
 L8L 7H8



MACHINED BELL



MACHINED BOWL



5-AXIS MACHINING OF IMPELLER



PUMP ASSEMBLED AND READY FOR TESTING



PUMP AT TESTING FACILITY

Calculated Outputs Corrected for Speed and Specific Gravity						
Data Point	Flow	TDH	BHP	WHP	Pump Efficiency	NPSH3
1	15262.09 gpm	35.23 ft	474.39	139.87	29.48 %	N/A
2	25220.76 gpm	27.08 ft	400.62	177.61	44.33 %	N/A
3	36666.76 gpm	31.75 ft	451.58	302.8	67.05 %	N/A
4	41216.46 gpm	30.46 ft	446.09	326.5	73.19 %	N/A
5	46429.97 gpm	28.53 ft	446	344.52	77.25 %	N/A
6	53086.46 gpm	25.78 ft	438.55	355.97	81.17 %	N/A
7	56886.16 gpm	23.56 ft	417.06	348.67	83.6 %	N/A
8	58043.98 gpm	23.38 ft	411.81	352.96	85.71 %	N/A
9	62762.77 gpm	21.67 ft	414.13	353.78	85.43 %	N/A
10	65007.72 gpm	20.11 ft	394.05	340.09	86.31 %	N/A
11	72010.4 gpm	15 ft	374.42	280.89	75.02 %	N/A

RESULTS SHOWED 1.5% EFFICIENCY GAIN OVER ORIGINAL CURVE

WHETHER YOU NEED YOUR LARGE VERTICAL PUMP REPAIRED, PARTS FOR AN EXISTING UNIT, OR COMPLETE TURN-KEY SOLUTIONS EMNOR IS HERE TO HELP.