

NEBRASKA PUBLIC POWER DISTRICT

Schedule: MR Issued: 08/16/22
Supersedes Schedule: -- -- Issued: -- --
Sheet No: 1 of 5 Sheets

METER REPORT SERVICE CHARGES RATE SCHEDULE (Name of Schedule)

APPLICABLE: To utilities and other entities requesting Meter Reports and related services from the District on a recurring basis.

DEFINITIONS:

1. Combined Meter Report – The standard summary, interval, and contributor reports produced by the District's wholesale meter reading and reporting system that provide meter data for multiple meters in aggregate. This report includes the Single Meter Report(s) or Combined Meter Report(s) for the individual contributors included in such aggregation. The District's standard format for this report is a pdf file.
2. Customer – The entity requesting services from the District that are provided for under this MR Rate Schedule.
3. Firm Customer – The District's retail customers, total requirements wholesale customers, and customers with an O&M Agreement that purchase 90% or more of their energy from the District.
4. Meter Report(s) – A Combined Meter Report or a Single Meter Report.
5. O&M Agreement – An Electric System Operation Agreement which specifies that the District shall operate, maintain, and construct additions to the customer's electric system.
6. Single Meter Report – The standard summary and interval reports produced by the District's wholesale meter reading and reporting system that provide meter data for a single meter. The District's standard format for this report is a pdf file.

RATES:

1. Meter Report:
 - a. Single Meter Report
 - i. Firm Customer \$52.00/monthly report
 - ii. All other entities \$61.00/monthly report

TAX CLAUSE: In the event of the imposition of any new or increased tax or any payment in lieu thereof, in excess of that provided for under Article VIII, Section 11 of the Nebraska Constitution, by any lawful authority on the production, transmission, or sale of electricity, the rate provided herein may be increased to reflect the amount of such tax or in lieu of tax increase.

Effective: September 1, 2022

Approved: 08/11/22 Resolution No: 22-27 Issued by: Todd A. Huang

NEBRASKA PUBLIC POWER DISTRICT

Schedule: MR Issued: 08/16/22
Supersedes Schedule: -- -- Issued: -- --
Sheet No: 2 of 5 Sheets

METER REPORT SERVICE CHARGES RATE SCHEDULE (Name of Schedule)

- b. Combined Meter Report
 - i. Firm Customer \$78.00/monthly report
 - ii. All other entities \$92.00/monthly report
- 2. On-Site Meter Interrogation:
 - a. First meter in a town/village \$66.00/meter
 - b. Each additional meter in same town/village read during the same trip \$33.00/meter
- 3. Initial Meter Setup
 - a. Firm Customer \$86.00/meter
 - b. All other entities \$104.00/meter
- 4. Cell Phone Charge: Direct pass through of the monthly charge received by the District from the cell service provider that is associated with the meter owned by the Customer.

SERVICES PROVIDED AND APPLICABILITY OF CHARGES:

Meter Report: This service involves the District utilizing its wholesale meter reading and reporting system to acquire, edit, and validate meter data and prepare, review, and issue Meter Reports requested by the Customer. Such Meter Reports shall be produced and provided on a monthly basis only. The charges included in this MR Rate Schedule do not apply to Meter Reports that are identical to (i.e., utilize same parameters, the same contributors, etc.) those necessary for the District's completion of a requesting Customer's wholesale purchase power bill, and that the District furnishes to such Customer along with their bill in the standard pdf format. In other cases, the District may provide the requested Meter Report at the applicable charge included in this MR Rate Schedule, may provide the Meter Report at no charge, or may decline to provide the Meter Report, as specified in the "Diagram Depicting Availability of Meter Reports and Applicable Charges" included at the end of this section.

On-Site Meter Interrogation: This charge applies when a Customer requests that the District's employees and wholesale meter reading system be utilized to directly interrogate a Customer's compatible meter at its installation site. The District provides this service on a monthly basis on a schedule determined by the District. This charge only includes the acquisition of meter data by the District. Meter Reports associated with such meters are provided at the applicable rates

TAX CLAUSE: In the event of the imposition of any new or increased tax or any payment in lieu thereof, in excess of that provided for under Article VIII, Section 11 of the Nebraska Constitution, by any lawful authority on the production, transmission, or sale of electricity, the rate provided herein may be increased to reflect the amount of such tax or in lieu of tax increase.

Effective: September 1, 2022

Approved: 08/11/22

Resolution No: 22-27

Issued by:

Todd A. Huang

NEBRASKA PUBLIC POWER DISTRICT

Schedule: MR Issued: 08/16/22
Supersedes Schedule: -- -- Issued: -- --
Sheet No: 3 of 5 Sheets

METER REPORT SERVICE CHARGES RATE SCHEDULE (Name of Schedule)

specified in this MR Rate Schedule. The Customer's meter must be safely accessible to District personnel.

Remote Meter Interrogation: This service involves the District utilizing its wholesale meter reading system to remotely interrogate a Customer's compatible meter on a mutually agreed upon schedule at the same time every month. There is no separate charge for this service. Meter Reports associated with such meters are provided at the applicable rates specified in this MR Rate Schedule.

Initial Meter Setup: This charge applies when a Customer requests that the District begin interrogating (either on-site or remotely) a new Customer-owned meter and such meter must be configured in the District's wholesale meter reading and reporting system to retrieve and process the metering data. This is a one-time charge per meter.

Cell Phone Charge: This charge applies when the District is billed by a cell service provider for communication with a Customer-owned meter.

Diagram Depicting Availability of Meter Reports and Applicable Charges:

TAX CLAUSE: In the event of the imposition of any new or increased tax or any payment in lieu thereof, in excess of that provided for under Article VIII, Section 11 of the Nebraska Constitution, by any lawful authority on the production, transmission, or sale of electricity, the rate provided herein may be increased to reflect the amount of such tax or in lieu of tax increase.

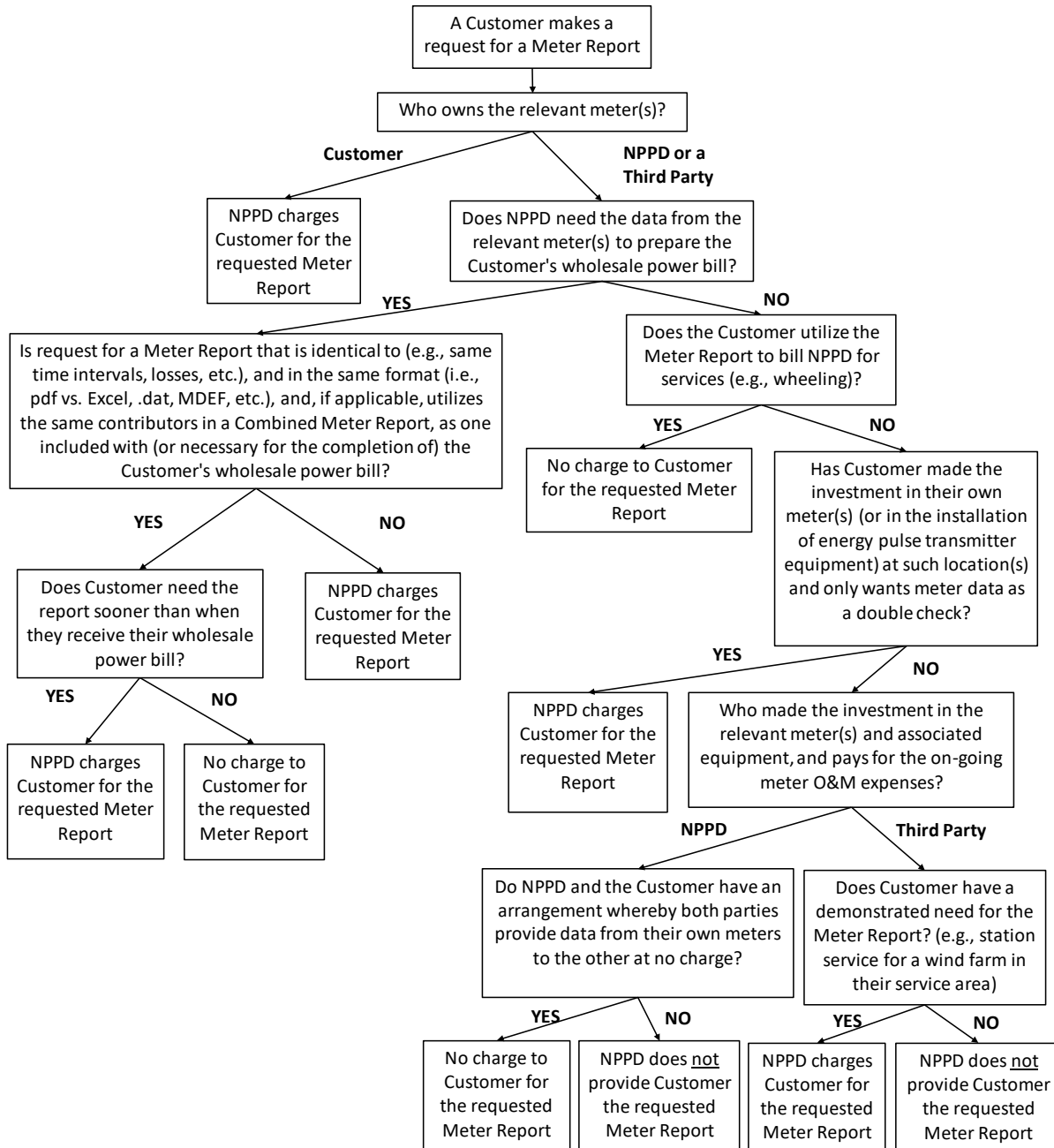
Effective: September 1, 2022

Approved: 08/11/22 Resolution No: 22-27 Issued by: Todd A. Huang

NEBRASKA PUBLIC POWER DISTRICT

Schedule: MR Issued: 08/16/22
Supersedes Schedule: -- -- Issued: -- --
Sheet No: 4 of 5 Sheets

METER REPORT SERVICE CHARGES RATE SCHEDULE (Name of Schedule)



TAX CLAUSE: In the event of the imposition of any new or increased tax or any payment in lieu thereof, in excess of that provided for under Article VIII, Section 11 of the Nebraska Constitution, by any lawful authority on the production, transmission, or sale of electricity, the rate provided herein may be increased to reflect the amount of such tax or in lieu of tax increase.

Effective: September 1, 2022

Approved: 08/11/22

Resolution No: 22-27

Issued by: Todd A. Shurg

NEBRASKA PUBLIC POWER DISTRICT

Schedule: MR Issued: 08/16/22
Supersedes Schedule: -- -- Issued: -- --
Sheet No: 5 of 5 Sheets

METER REPORT SERVICE CHARGES RATE SCHEDULE (Name of Schedule)

TERMS AND CONDITIONS:

1. The charges included in this MR Rate Schedule do not apply when the District has a written agreement with an entity that includes a requirement for the District to supply certain metering data to that entity.
2. All Customer metering equipment shall be owned, installed, operated and maintained by the Customer at their expense.
3. The District shall only provide Meter Reports and related services for Customer-owned meters and equipment that are compatible with the District's wholesale meter reading and reporting system. Any testing required by the District to verify compatibility of such Customer equipment will be billed to the Customer at the applicable hourly labor rate then in effect.
4. The rates included in this MR Rate Schedule represent the average cost for the District to provide these services. The District reserves the right to bill for additional labor charges at the applicable hourly rate then in effect in cases where additional labor time and effort is required to produce a Customer's requested Meter Report.
5. The District retains and reserves the right, power, and authority to modify, revise, amend, replace, repeal or cancel this Rate Schedule, at any time and in whole or in part, by resolution adopted by the District's Board of Directors.

TAX CLAUSE: In the event of the imposition of any new or increased tax or any payment in lieu thereof, in excess of that provided for under Article VIII, Section 11 of the Nebraska Constitution, by any lawful authority on the production, transmission, or sale of electricity, the rate provided herein may be increased to reflect the amount of such tax or in lieu of tax increase.

Effective: September 1, 2022

Approved: 08/11/22 Resolution No: 22-27 Issued by: Todd A. Huang