



## Underground Storage Tanks

### Potable Water, Rainwater, Elsan® Waste & Cesspool



### High capacity, underground storage tanks: water & waste

These rotationally moulded underground tanks are designed for use in industrial, agricultural, commercial and domestic applications. Typical uses include rainwater harvesting; surface water collection; potable water storage where mains water is not available; grey and black water storage including Elsan® toilet and cesspool waste.

Manufactured from UV-stabilised, medium density polyethylene (MDPE) and with a potable-approved polymer (for WRAS applications) these one piece tanks are designed with a ribbed construction for added strength and allow contents to be captured for many purposes.

For rainwater applications please consult us for rainwater filters, calmed inlets and overflows.

#### RANGE EXPANDED SPRING 2022:

Tank volumes from: 280, 550, 1100, 1400, 1700, 2000, 5000 & 10,000 litres.

10,000 litre tank  
at point of delivery

### Technical Advantages

- Manufactured in the UK
- Multiple ribs for added strength
- One piece construction with no sub-assembly required, reducing installation time and effort

### Applications

- PS-VTP tanks are WRAS & DWI (Reg 31) approved
- PS-VTR tanks are suitable for rainwater, slurry, cesspool, toilet and Elsan® toilet waste
- Residential, commercial, industrial, agricultural
- Landscape, horticultural, park watering
- Watering systems for ground keepers, sports stadia, municipal gardens etc.
- Irrigation, wash down facilities
- Waste storage station - Elsan® toilet waste, cesspool, chemiloo waste
- Portable toilet industry waste storage

WRAS = Water Regulations Advisory Scheme DWI = Drinking Water Inspectorate





## Technical Data

Volume (Litres)	Height (mm)	Diameter / Width (mm)	Length (mm)	Weight (Kg)	Tank Orientation / Lid Type	SKU / Stock Code	WRAS Approved
<b>280</b> (62)	1,000	600	N/A	TBC	Vertical / Plastic	PS-VTR-28 (Waste)	No
					Vertical / Plastic	PS-VTP-28 (Potable)	Yes
<b>550</b> (121)	2,000	600	N/A	TBC	Vertical / Plastic	PS-VTR-50 (Waste)	No
					Vertical / Plastic	PS-VTP-50 (Potable)	Yes
<b>800</b> (176)	1,020	1,000	N/A	TBC	Vertical / Steel	PS-VTR-80 (Waste)	No
					Vertical / Plastic	PS-VTP-80 (Potable)	Yes
<b>1,100</b> (242)	1,400	1,000	N/A	TBC	Vertical / Steel	PS-VTR-110 (Waste)	No
					Vertical / Plastic	PS-VTP-110 (Potable)	Yes
<b>1,400</b> (308)	1,800	1,000	N/A	TBC	Vertical / Steel	PS-VTR-140 (Waste)	No
					Vertical / Plastic	PS-VTP-140 (Potable)	Yes
<b>1700</b> (374)	2,350	1,000	N/A	TBC	Vertical / Steel	PS-VTR-170 (Waste)	No
					Vertical / Plastic	PS-VTP-170 (Potable)	Yes
<b>2,000</b> (440)	2,900	1,000	N/A	TBC	Vertical / Steel	PS-VTR-200 (Waste)	No
					Vertical / Plastic	PS-VTP-200 (Potable)	Yes
<b>5,000</b> (1101)	2,390	2,030	2,480	TBC	Horizontal / Steel	PS-VTR-500 (Waste)	No
					Horizontal / Plastic	PS-VTP-500 (Potable)	Yes
<b>10,000</b> (2202)	2,540	2,180	3,980	TBC	Horizontal / Steel	PS-VTR-1000 (Waste)	No
					Horizontal / Plastic	PS-VTP-1000 (Potable)	Yes

### NOTES:

<b>(1) Dimensions</b>	Tank dimensions may vary by +/- 3% - tanks will expand and contract owing to temperature fluctuations.
<b>(2) SG - Specific Gravity</b>	Tanks are manufactured in grades (gauges) of plastic to suit the density / specific gravity of the liquid contents.
	Water has an SG of 1. Slurry / toilet waste has an SG closer to 1.5 for which heavier gauge material is required.
<b>(3) Colours</b>	Non-potable water (VTR-suffixed) tanks are available in Natural as standard.
	Potable water (VTP-suffixed) and Toilet Waste (S-suffixed) tanks are available in natural as standard.
<b>(4) Pricing</b>	<b>On account of raw material price volatility, prices are an indication only and can only be confirmed when quoting.</b>
<b>Delivery</b>	Standard delivery is "kerbside" only and assumes - the customer will need to provide suitable offloading equipment.
	Although tanks are equipped with 4 x lifting eyes for empty lifting only, suitable straps / eyelets will be required.
	Timed, FORS and HIAB deliveries are available at extra cost. The driver is not qualified to advise on, or install the product.
	Prices are ex-works + delivery + VAT. <b>On account of extreme raw material price volatility "slurry" tanks are POA only.</b>

We reserve the right to amend the technical specification to improve the product without prior notification

- Optional turrets for housing control equipment or where the tank is installed deeper underground.
- Plastic lids are non load-bearing. Galvanised lids (where fitted) have a load-bearing rating of 10 tonnes.

### PRODUCT WARRANTY:

**SUBJECT TO GENERAL WEAR, TEAR & USAGE CONDITIONS = 12 MONTHS WARRANTY AS STANDARD  
UPGRADE TO 10 YEAR WARRANTY BY RETURNING THE "EXTENDED WARRANTY CONDITIONS" WITHIN 21 DAYS OF SUPPLY**



## Underground Storage Tanks

### Potable Water, Rainwater, Elsan® Waste & Cesspool

#### Range Details

RANGE EXPANDED SPRING 2022:

in vertical format

- 280, 550, 800, 1100, 1400, 1700 & 2000 litres

in horizontal format

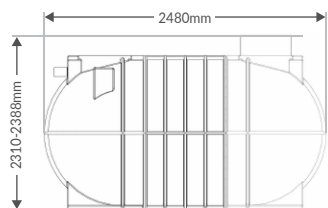
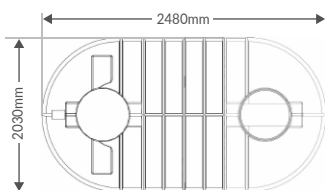
- 5000 and 10,000 litres.

(Just some of the most popular tanks are detailed below).

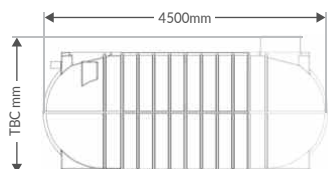
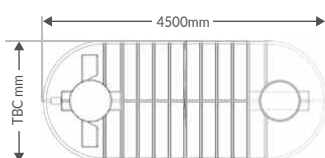
Plan view

Side view

#### PS-VTR-500 / PS-VTP-500



#### PS-VTR-1000 / PS-VTP-1000



#### Upgrade Kits

- Manhole covers
- Extension turrets (0.5m and 1m) for housing control equipment or where tank is being installed deeper underground
- Tank alarms (local wi-fi)

Potable tanks for trafficable areas are installed under a concrete ring



Potable water tanks are supplied with a plastic lid.  
All other tanks use a galvanised lid.



Vertical tanks from  
280 - 2000 litres

Horizontal tanks from  
5000 - 10,000 litres



## Underground Storage Tanks

### Installation Instructions & Warranty

Our standard warranty for these tanks is 12 months from purchase.

This warranty can be extended up to 10 years if - within 21 days of purchase - you return the "Extended Warranty Form" that will be delivered with each tank as part of the installation instructions and guidance document.

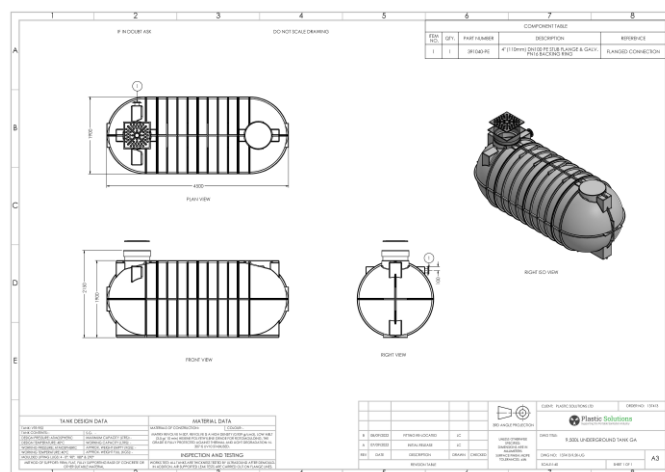


### CAD Drawings

Although the **Underground Storage Tanks** are not generally customised to the extent of other tanks in our range, for your peace of mind and as part of our customer service ethic we can take as long as you need to go through the various options, so that we cover everything you require.

Whatever you choose, once we've jointly discussed and defined what you need we will prepare a professional CAD drawing so that you can visualise how it will look before it arrives! The drawing will include the accessories you have selected and their positions on the tank. You can make amendments on the drawing and we'll change it until you are satisfied.

Once you're happy that everything is just as you'd like it, we ask you to sign off the drawing so that becomes the official template of what we ultimately produce for you. We only produce your tank when you're happy, and when we are all in agreement on the signed drawing.



Please see our note on customised tanks, below.

### Customised Tanks

One of the reasons why we take so much care and attention to specify the tank you require - before you place your order and before we go into production - is to minimise wastage and errors. We mould the basic tanks on a continual basis to maintain suitable stock levels so that we can quickly respond to orders: but once we start cutting holes in the tank to accept accessories, that activity will effectively render the product useless for anyone else. The tank will then have become a non-standard item. Non-standard items and any non-faulty returns will be processed at the discretion of the business.

Customisation for the Underground tanks is generally quite simple: usually (1) a turret extension or (2) tank fittings and a high level linking pipe between two tanks so that waste flows from one into the other.