



# Public Information Meeting: Fabyan Parkway at Illinois Route 31

Kane County Division of  
Transportation  
July 13, 2021



# WELCOME

- Zoom info
- Enter your questions in the Chat feature of your Zoom frame
- Recording of this meeting will be available at [www.FabyanIL31Intersection.com](http://www.FabyanIL31Intersection.com)
- Submit further questions via project website or to Kane County Division of Transportation



# Introductions



**MICHAEL ZAKOSEK, PE**

Chief of Design

Kane County Division of  
Transportation

Phone: 630.406.7346

Fax: 630.584.5265

Email: [zakosekmike@co.kane.il.us](mailto:zakosekmike@co.kane.il.us)



**JACK MELHUISH, PE**

Project Manager  
HR Green, Inc.

Phone: 815.759.8342

Email: [jmelhuish@hrgreen.com](mailto:jmelhuish@hrgreen.com)



# PLANNING AND ENVIRONMENTAL LINKAGES (PEL)

- Goals
- Develop Purpose and Need
- Alternatives to be carried forward



Source: FHWA



# PROJECT HISTORY



Looking east on Fabyan Parkway



IDOT Kickoff  
Meeting



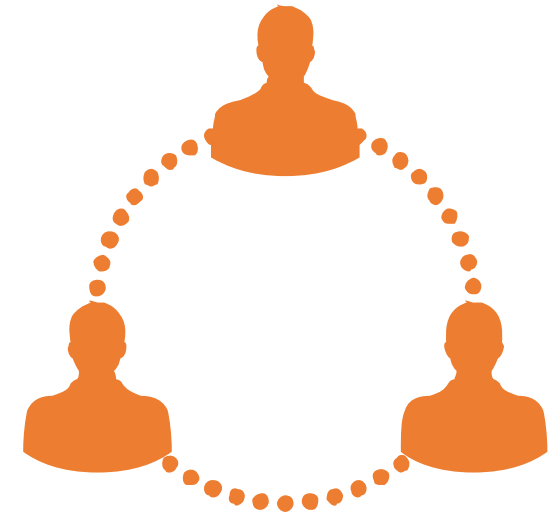
Data  
Collection



Engineering  
Analysis

# STAKEHOLDER MEETINGS

- Covenant Living at the Holmstad
- Campana Redevelopment, Ltd.
- Forest Preserve District of Kane County
- Preservation Partners of the Fox Valley
- City of Batavia
- City of Geneva



# GEOMETRIC DEFICIENCIES

- Skewed intersection
- Storage lengths for turn lanes
- Lack of dedicated right turn lanes
- Limited pedestrian accommodations
- Existing traffic analysis



Aerial exhibit of  
study area



# SKEWED INTERSECTION

- East leg of Fabyan
  - 68° angle
  - Driver perception
  - Site distance
- IDOT BDE Design Policy = 75°



Waiting to turn left  
onto north-bound  
IL 31



# LEFT TURN LANES ON FABYAN PARKWAY



	Currently Sufficient Lengths?	Eastbound Required	Eastbound Existing	Westbound Required	Westbound Existing
Fabyan Pkwy (2019)	No	148 feet	155 feet	332 feet	120 feet
Fabyan Pkwy (2050)	No	194 feet	155 feet	505 feet	120 feet

# LEFT TURN LANES ON ILLINOIS ROUTE 31



	Currently Sufficient Lengths?	Northbound Required	Northbound Existing	Southbound Required	Southbound Existing
IL Route 31 (2019)	No	246 feet	120 feet	297 feet	144 feet
IL Route 31 (2050)	No	343 feet	120 feet	429 feet	144 feet

# RIGHT TURN LANES

- Shared Through / Right Turn Lane



Shared  
right/through lane



# PEDESTRIAN ACCOMMODATIONS

- Limited accommodations
  - Fabyan Parkway Trail
  - Sidewalk along IL 31 west parkway
  - Crossing on the south leg of IL 31
- Pedestrian Generators
  - Fox River Trail
  - Numerous residential properties
  - Cities of Batavia and Geneva



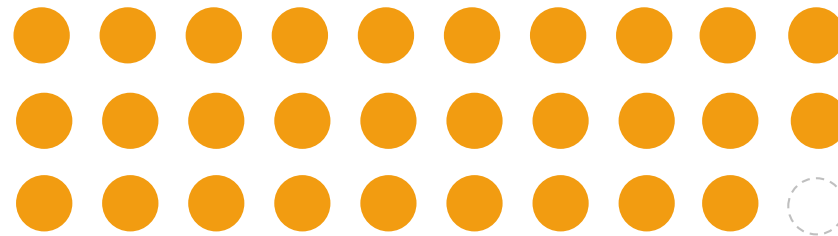


# CRASH HISTORY

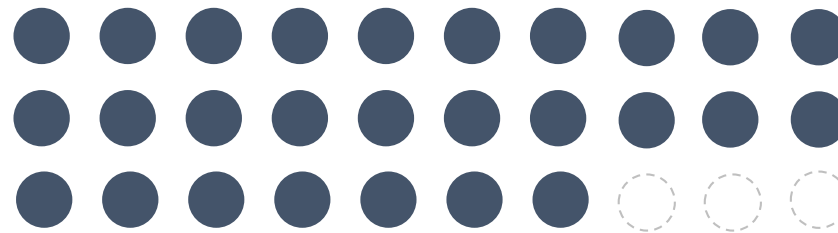
- 2020 IDOT Critical Tier Intersection
- 228 crashes over a 5-year period (2013-2017)



9 Type A Crashes



29 Type B Crashes



27 Type C Crashes

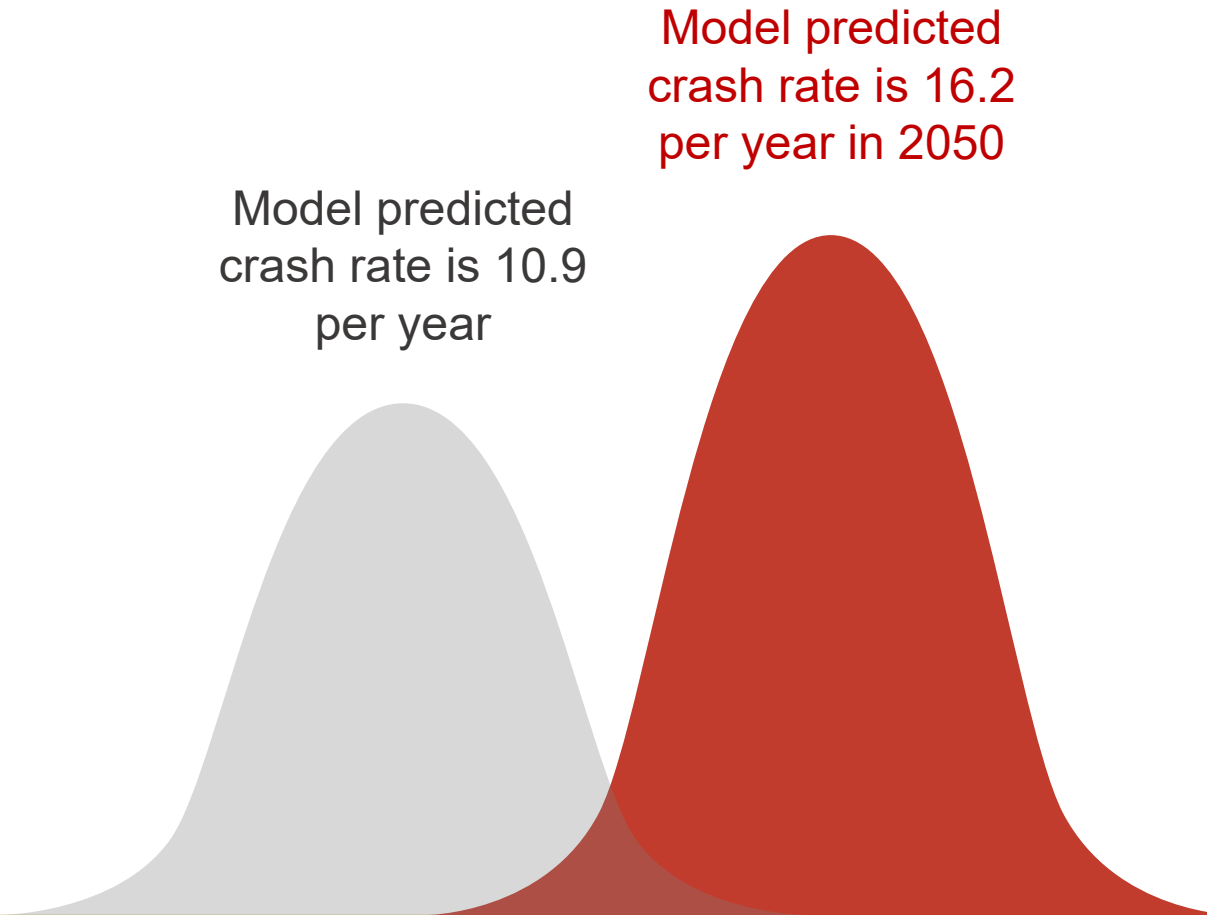


1 Fatality



# CRASH PREDICTION TOOL

- Crash rate is 45.6 per year on average



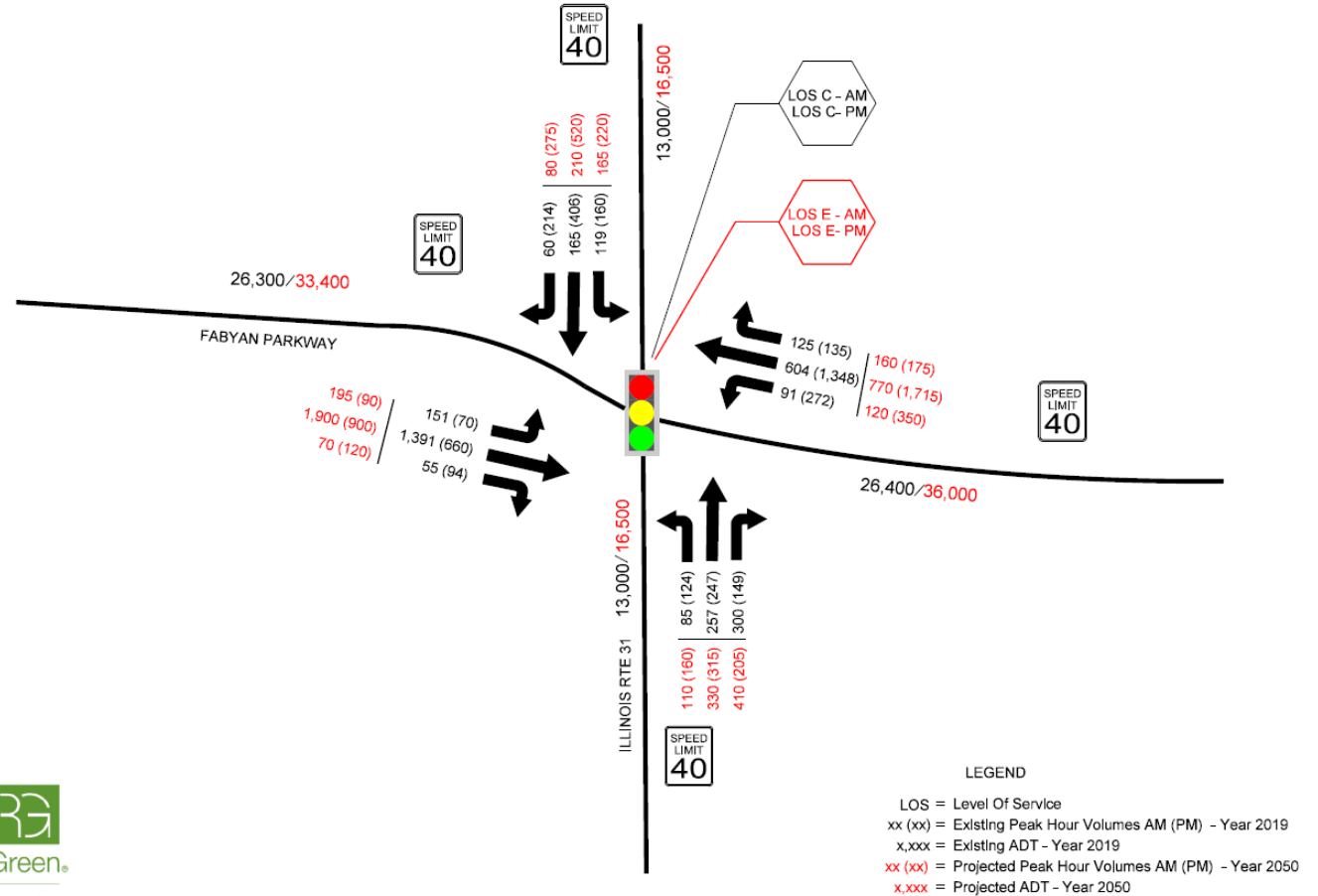
# AVERAGE DAILY TRAFFIC (ADT)

## Fabyan Parkway

- 26,400 (2019)
- 36,000 (2050)

## IL Route 31

- 13,000 (2019)
- 16,500 (2050)



# LEVEL OF SERVICE (LOS)

- Method of measuring delay traveling through intersection
- Summarized with grades of A-F



**Level of Service A**

•Free-flow



**Level of Service B**

•Reasonably Free-flow



**Level of Service C**

•Stable Operation



**Level of Service D**

•Borderline Unstable



**Level of Service E**

•Extremely Unstable



**Level of Service F**

•Breakdown



# EXISTING AND PROJECTED LEVELS OF SERVICE



Year	Intersection	IL Route 31	Fabyan Parkway
2019	LOS C	Multiple individual movements at LOS D or worse	Individual movements at LOS B-C
2050	LOS E	Individual movements at LOS D-F	Individual movements at LOS C-F

# PURPOSE AND NEED

- Address intersection deficiencies
- Improve safety





- Fox River crossing
- Fabyan Forest Preserve
- Campana Property



# KEYS TO SUCCESS

- Left turn lane lengths
- Fabyan Parkway alignment
- Lack of dedicated right turn lanes
- Increased pedestrian accommodations



[This Photo](#) by Unknown Author is licensed under [CC BY-SA](#)





# ALTERNATE 1: OVERVIEW

1

Realignment  
of Fabyan  
Parkway

2

Dedicated  
right turn  
lanes

3

Lengthened  
existing left  
turn lanes

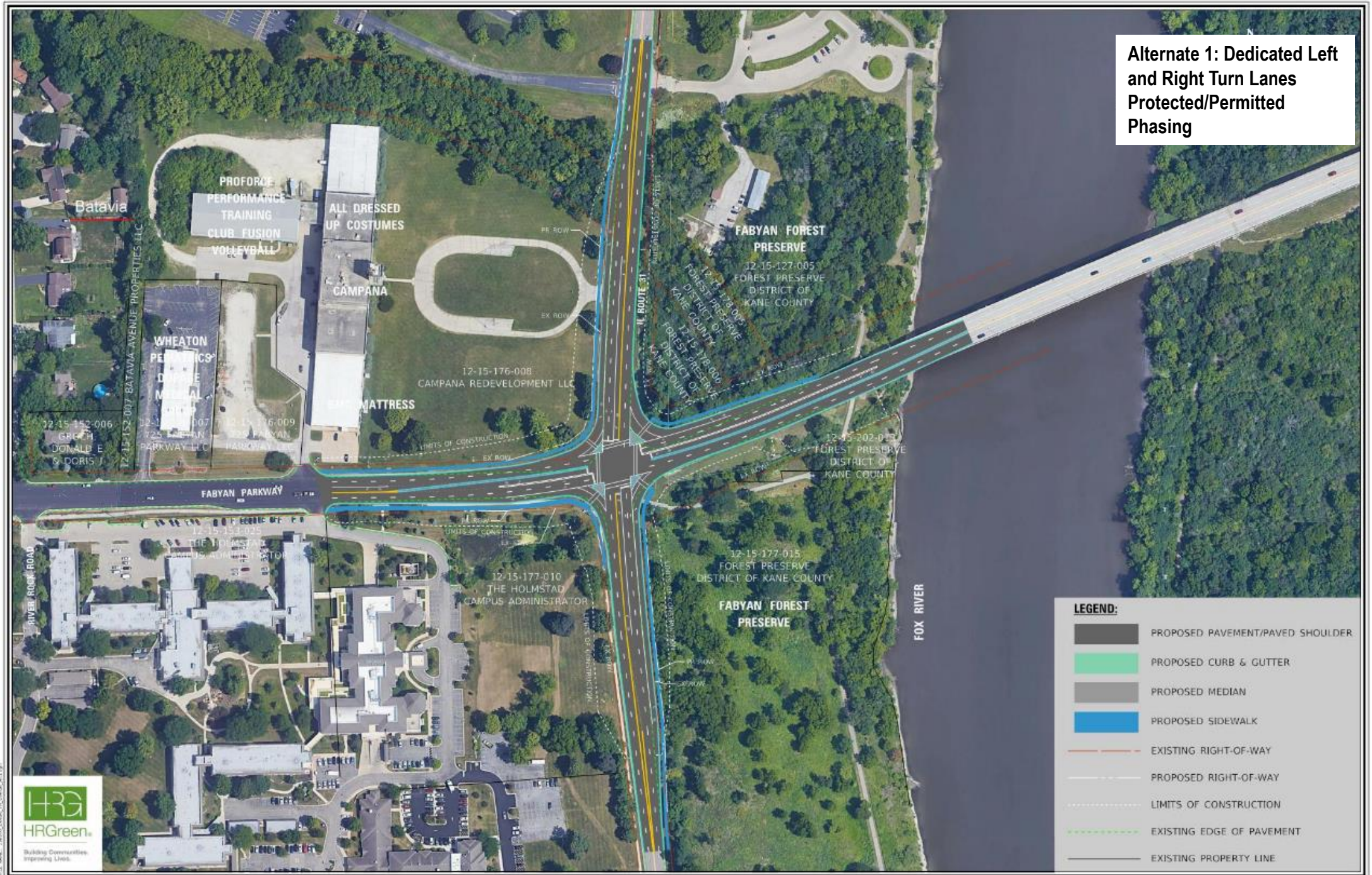
4

Additional ped  
accommodation





### Alternate 1: Dedicated Left and Right Turn Lanes Protected/Permitted Phasing





# ALTERNATE 1: PROTECTED/PERMITTED

- Protected/Permitted left turn lanes on all four legs



Protected/  
permitted signal  
example

# ALTERNATE 1: TRAFFIC MODELING RESULTS

- Storage lengths
- Forest Preserve impacts
- Bridge impacts
- Level of service
  - Intersection C (AM)
  - Intersection D (PM)
  - Individual movements LOS B-D





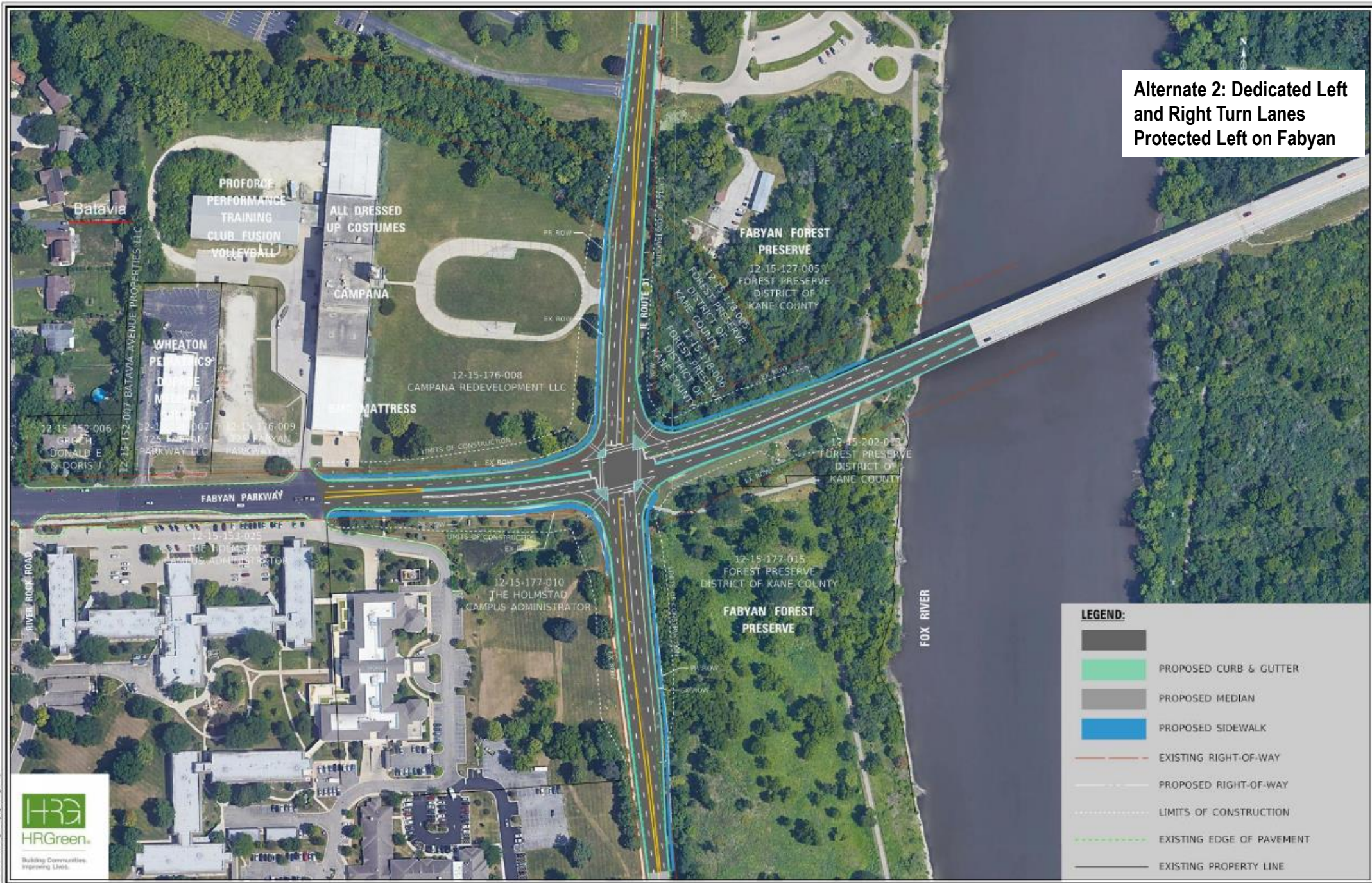
# ALTERNATE 2: OVERVIEW

- 1  
Realignment of Fabyan Parkway
- 2  
Dedicated right turn lanes
- 3  
Lengthened existing left turn lanes
- 4  
Additional ped accommodation
- 5  
Protected only turning on Fabyan Parkway





**Alternate 2: Dedicated Left and Right Turn Lanes Protected Left on Fabyan**





# ALTERNATE 2: TRAFFIC MODELING RESULTS

- Storage lengths
- Forest Preserve impacts
- Bridge impacts
- Level of Service
  - Intersection D (AM)
  - Intersection D (PM)
  - Individual movements LOS B-F



# ALTERNATE 3: OVERVIEW

1

Realignment  
of Fabyan  
Parkway

2

Dedicated  
right turn  
lanes

3

Dual left turn  
lanes

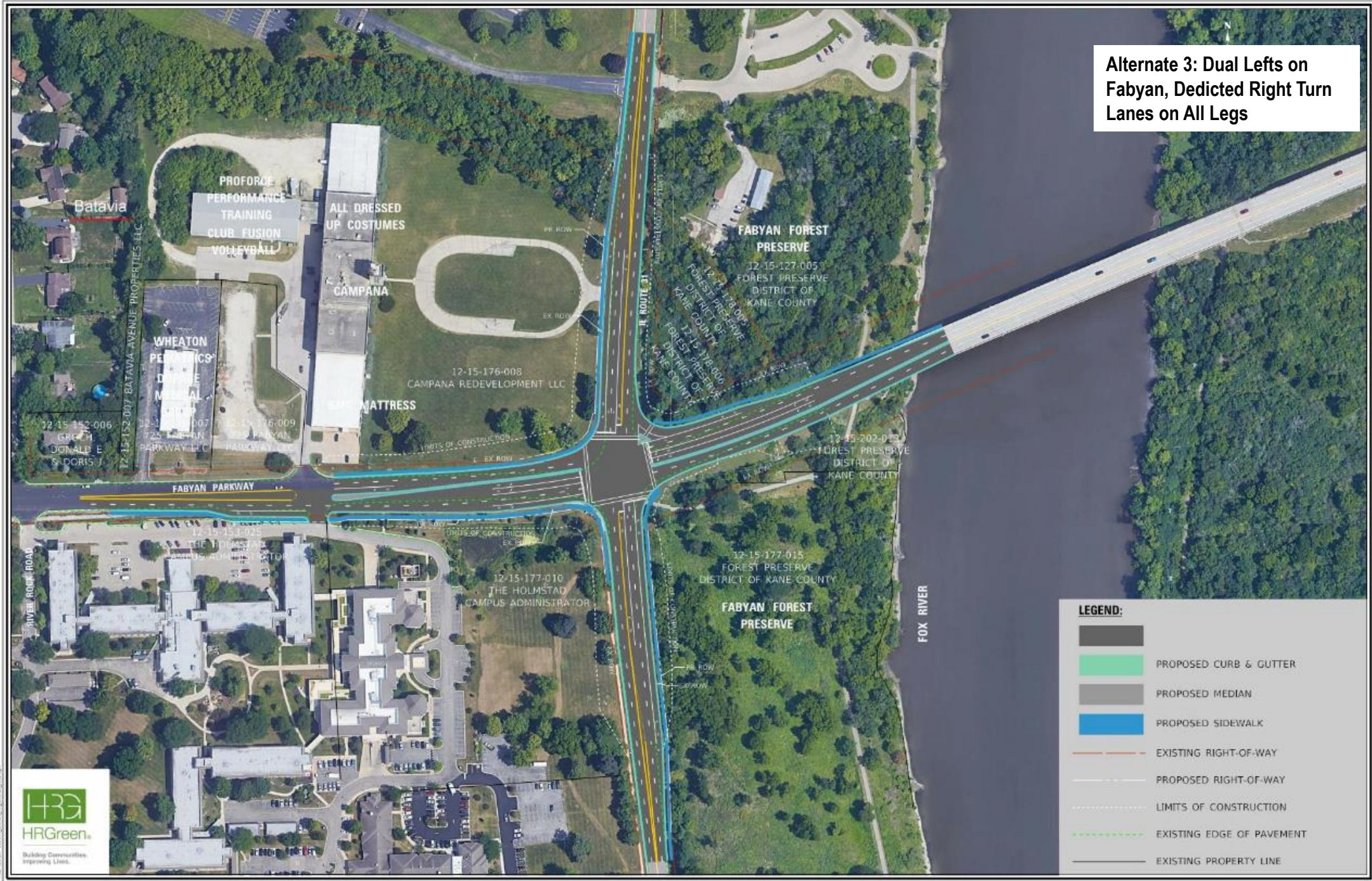
4

Additional ped  
accommodation





**Alternate 3: Dual Lefts on  
Fabyan, Dedicated Right Turn  
Lanes on All Legs**





# ALTERNATE 3: PROTECTED ONLY

- Protected only left turns
  - Increase safety
  - Increase right of way needs



Protected left turn  
signal example

# ALTERNATE 3: TRAFFIC MODELING RESULTS

- Storage lengths
- Forest Preserve impacts
- Bridge impacts
- Level of Service
  - Intersection C (AM)
  - Intersection D (PM)
  - Individual movements LOS B-F





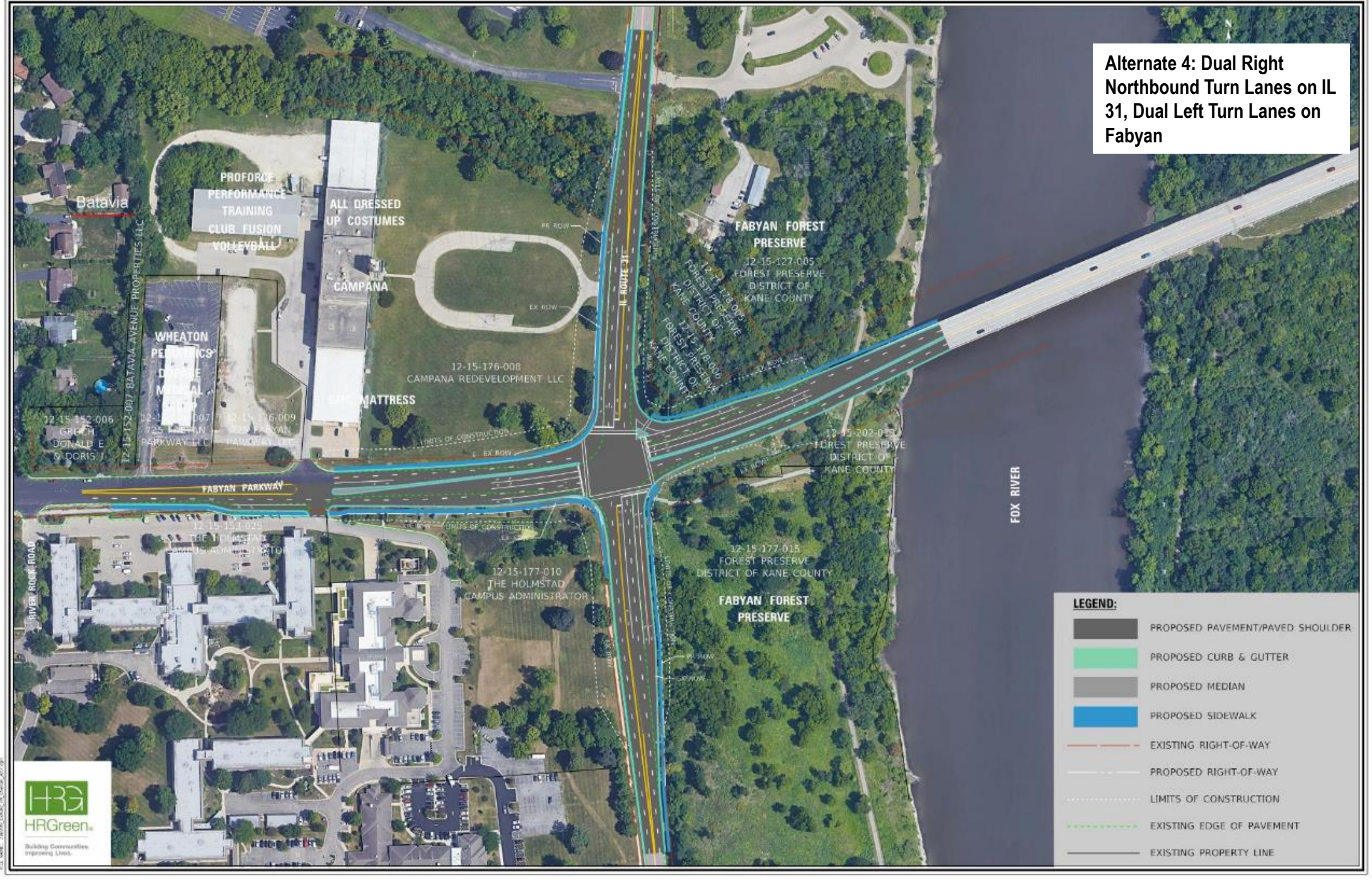
# ALTERNATE 4: OVERVIEW

- 1  
Realignment of Fabyan Parkway
- 2  
Dedicated right turn lanes
- 3  
Dual left turn lanes
- 4  
Additional ped accommodation
- 5  
Dual right north-bound turn lanes on IL 31





**Alternate 4: Dual Right  
Northbound Turn Lanes on IL  
31, Dual Left Turn Lanes on  
Fabyan**





# ALTERNATE 4: TRAFFIC MODELING RESULTS

- Storage lengths
- Forest Preserve impacts
- Bridge impacts
- Level of Service
  - Intersection D (AM)
  - Intersection D (PM)
  - Individual movements LOS B-F





# PROJECT SCHEDULE



# PROJECT CONTACTS AND Q&A

## MICHAEL ZAKOSEK, PE

Chief of Design

Kane County Division of  
Transportation

Phone: 630.406.7346

Fax: 630.584.5265

Email: [zakosekmike@co.kane.il.us](mailto:zakosekmike@co.kane.il.us)

## JACK MELHUISH, PE

Project Manager

HR Green, Inc.

Phone: 815.759.8342

Email: [jmelhuish@hrgreen.com](mailto:jmelhuish@hrgreen.com)

Visit [www.FabyanIL31Intersection.com](http://www.FabyanIL31Intersection.com) to view alternates and submit questions by August 13, 2021

[Link to interactive](#)

