

## DIVERTER\* – Flush Relocation Without Stuffing Box Modification

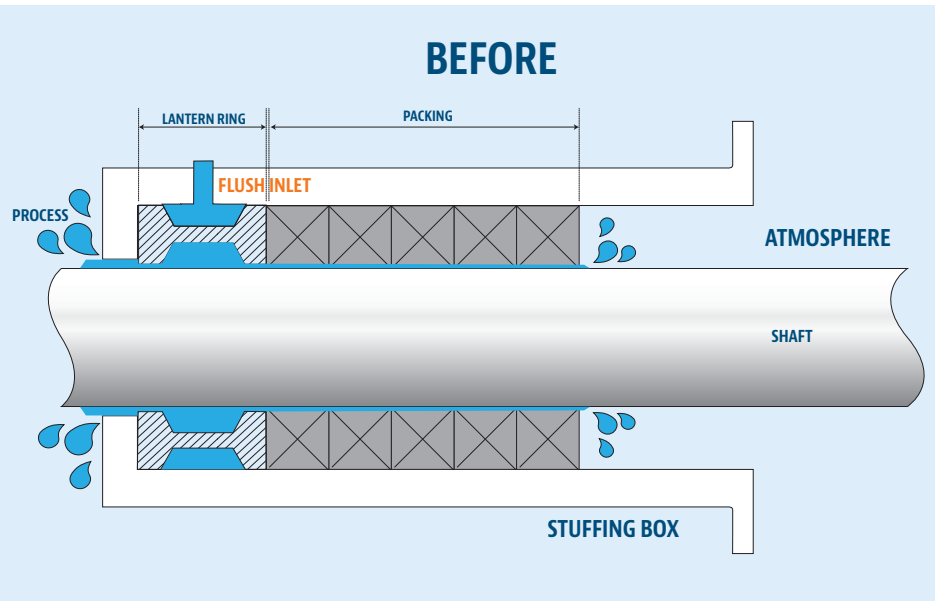
The PackRyt® Diverter is a unique stuffing box sealing arrangement that incorporates a flush channel relocation system internally within the composite bearing. This replaces outdated lantern ring/packing configurations that dump excess water into the process. The Diverter relocates the flush deposit and drastically throttles flush volume. Our system ALSO brings shafts into concentricity and keeps them there, significantly increasing sealing reliability.

### THE PROBLEM

Many pump and equipment manufacturers locate the flush water port at the bottom of the stuffing box.

Flush water is allowed to flow **IN VERY HIGH VOLUMES** to process unchecked.

Manually reducing flush flow allows slurry to enter the stuffing box and destroy expensive hard parts.



**MOVING FLUSH DEPOSIT AWAY FROM PROCESS DRASTICALLY REDUCES VOLUME USED.**

### THE SOLUTION

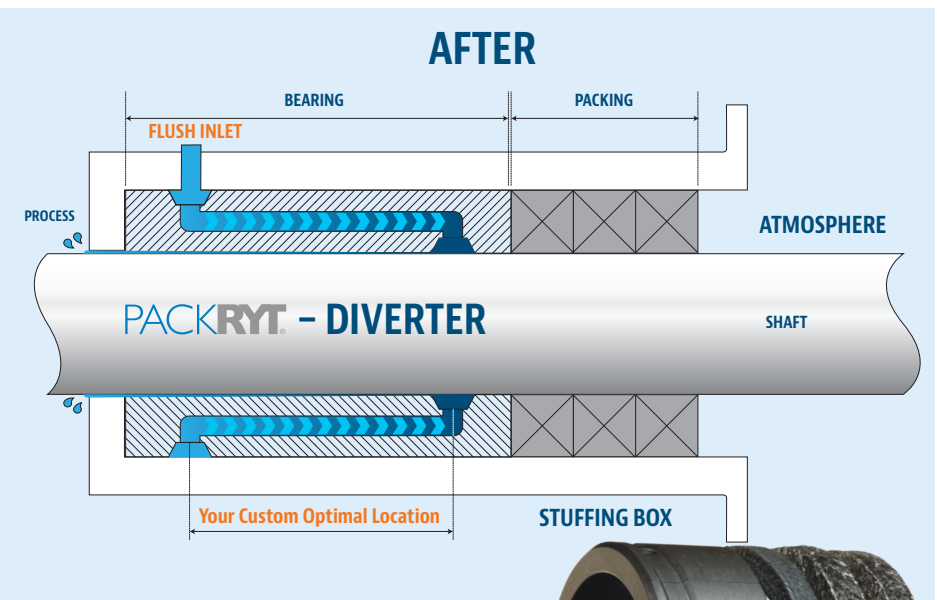
The PackRyt® Diverter solves the problem and more.

Flush water is relocated to the optimal position for YOUR application using channels within the bearing.

Shaft stabilization technology prevents shaft movement such as run-out and deflection.

No equipment modifications required.

The PackRyt® Diverter Sealing System greatly increases sealing reliability and equipment bearing life.



**UP TO 85% REDUCTION IN FLUSH AUTOMATICALLY!**

**\*Patent Pending**

## ADVANTAGES

- Machined to close-clearance, the bearing stabilizes the shaft and prevents movement
- Cavitation caused deflection is minimized
- Results in minimal friction to sleeve/shaft
- Minimal clearance sharply throttles solids, which allows the low-flush to keep them out of the shaft area
- Flush use reduction averages over 65%
- Flush flow remains constant
- Automatically positions flush channel correctly, lantern ring cannot move past flush inlet
- Little, or in some cases, no leakage from gland follower to atmosphere
- Eliminates need to constantly adjust packing
- As few as two rings of packing required
- High performance, ultra pure heat conductive sealing rings can virtually eliminate sleeve/shaft wear

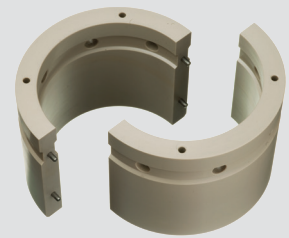
## HIGH-PERFORMANCE THERMOPLASTIC BEARING BLOCK

- Tremendous compressive and flexural strength
- Impervious to most chemicals.
- Virtually no dimensional growth up to 260°C
- Split, pinned, drilled and tapped for easy installation and removal.
- Available as split bearing without internal channels (Product Names: BLR and BRG).

### SPLIT DESIGN FOR EASY INSTALLATION

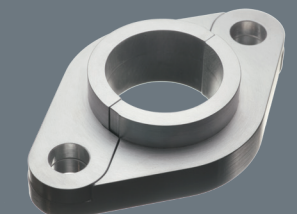
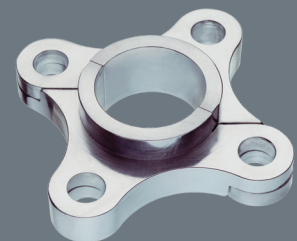
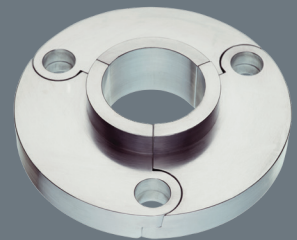


### SPECIALTY AND FDA/USDA COMPLIANT BEARING AND TEXTILE MATERIALS AVAILABLE



### CUSTOM MILLED GLAND FOLLOWERS

For all applications, in any material desired, using an interlocking design and completely milled, not welded and machined.



## CASE STUDIES

### Dissolving Tank Agitators

A PackRyt® Sealing System was installed on 4 hard coated shaft tank agitator units and they have been running trouble free for over 2 years.

Previously these units had shaft change outs every year at a cost of approximately \$80,000.00.

### Stock Pumps

A PackRyt® Sealing System was installed on a 3175 stock pump having extreme leakage and maintenance issues. The PackRyt® eliminated the problems. All pumps and agitators on the paper machine and the pulp dryer are now being considered for change out.

### Fiber Line Equipment

A chip chute pump was being re packed every 2 months and now with the PackRyt® Sealing System installed it has one annual packing change. The bearing has had a life span of over 5 years.