

## FOR EXFOLIATED GRAPHITE PACKING STYLES – 396, 396C

### STOP – READ THIS FIRST

The PackRyt® or Ring Set should be installed in the order that it is packaged from the factory - starting with the bearing unless otherwise instructed. Please note the packing order before opening packaging.

### 1. PREPARATION

Remove all old packing, lantern ring, etc. and thoroughly clean the shaft and stuffing box. Make sure there are no solids present in the sealing area.

Disconnect any discharge or water “out” flush lines and plug the hole, leaving only the “in” line.

NOTE: If installing a PackRyt® bearing this step will have already been finished.

### 2. INSTALL PACKING

Install each packing ring individually, staggering the joints. Begin the first ring with the joint at the 2 o'clock position. Seat the ring firmly against bottom of stuffing box OR against the PackRyt® Sealing System Bearing if applicable. Use a tamp tool to ensure the packing is fully seated before installing the next ring (do not use other new packing rings to push in new rings).

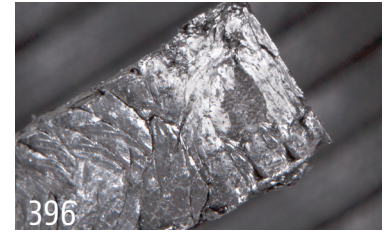
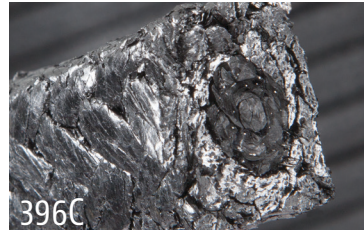
Ring joints should be staggered 180° apart for a two ring set, 120° for a three ring set, and 90° for a four or more ring set.

**Example: For a three ring set, joints should be at 2 o'clock, then 6 o'clock and finally at 10 o'clock.**

**TIP:** There are 30 degrees between each hour. 360 degrees divided by 12 hours equals 30 degrees.

### 3. INSTALL THE GLAND FOLLOWER

Once all the packing rings are installed, bring the gland follower to the packing and tighten the gland bolts **HARD, CRUSH THE PACKING**. Then back off the nuts and let the packing relax for a few minutes. Retighten the nuts, finger tight and you are ready to run the equipment.



### 4. PRE-STARTUP

Install flush lines and turn on flush water. There should be a small leakage from the stuffing box.

**For BLR (PackRyt® – bearing with integrated lantern ring) configurations** turn the water on full force (minimum of 15 psi over stuffing box pressure) prior to running equipment. This is especially important for initial start up.

### 5. START-UP

Some smoking/steaming can occur at start-up and may last for a minute or two. If smoking/steaming continues beyond the first few minutes the gland follower may be too tight. Loosen the gland follower nuts 2 flats to allow the packing to relax. The smoking/steaming should subside but this may allow flush media to leak.

Once the smoking/steaming has dissipated, **SLOWLY** tighten the gland follower nuts until the flush media leakage stops or leaks at an acceptable rate. Adjust packing two flats on the nuts at a time and then wait for 5 minutes or so before you tighten more. Note: SealRyt® products do not need leakage to work properly.

Come back the next shift or next day and inspect the packing. If it is necessary to tighten the packing you should follow the process listed above and tighten slowly. When you tighten the packing you must allow time for the increased gland pressure put on the outer rings to move to the inner rings. If you tighten the packing too quickly the load will move to the inner rings and the outer rings will become loose again.

### 6. FINISHING

“The jobs not done until the clean up is finished.” – My Grandpa

**If you encounter any difficulty or have questions regarding installation or performance, please contact SealRyt at: 413-564-5202 Mon – Fri 8:00AM to 5:00PM EST**