

1490

# BOSTON ROAD

**ksr**  
KASSIN SABBAGH REALTY

BETWEEN STEBBINS AVENUE & LOUIS NINE BLVD  
CROTONA PARK EAST | BRONX





# 1490 BOSTON ROAD

BETWEEN STEBBINS AVENUE & LOUIS NINE BLVD  
CROTONA PARK EAST | BRONX

## PROPERTY HIGHLIGHTS

- All Uses Considered
- Currently built out for use as office space with 3 separate rooms, bathroom with plumbing, kitchenette and HVAC in place
- Right on the intersection Of Boston Rd and Louis Nine Blvd.

**SIZE:** 2,000 SF

**FRONTAGE:** 63 Feet (Appox.)

**POSSESSION:** December 2021

**TRANSPORTATION:** 2 5

**NEIGHBORS:**



CONTACT OUR BROKERS FOR MORE INFORMATION:

**ELI YADID**

EYadid@ksrny.com

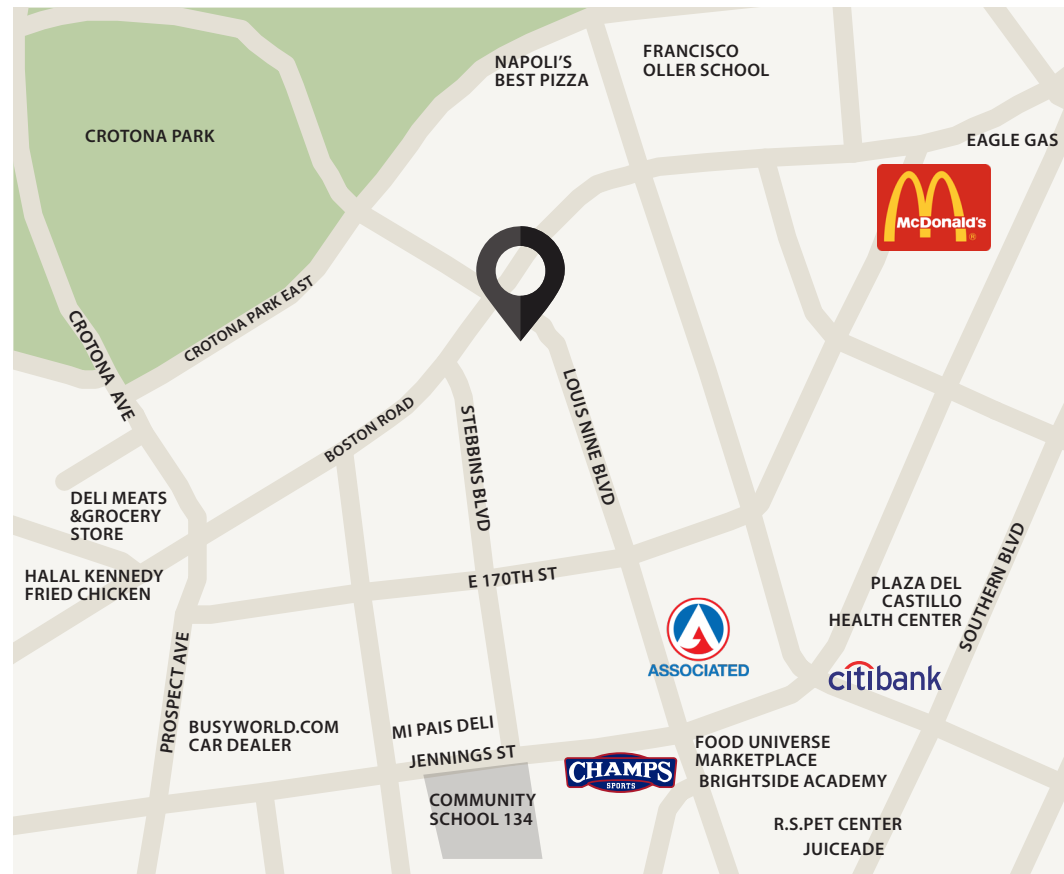
917.770.9173

**MARC SITT**

MSitt@ksrny.com

917.757.8863

All information supplied in this marketing presentation and/or flyer is from sources deemed reliable and is furnished subject to errors, omissions, modifications, removal of listings from sale/lease and to any listing condition. Any square footage, dimensions, floor plans and/or technical data set forth are approximations and are subject to further elaboration/confirmation.

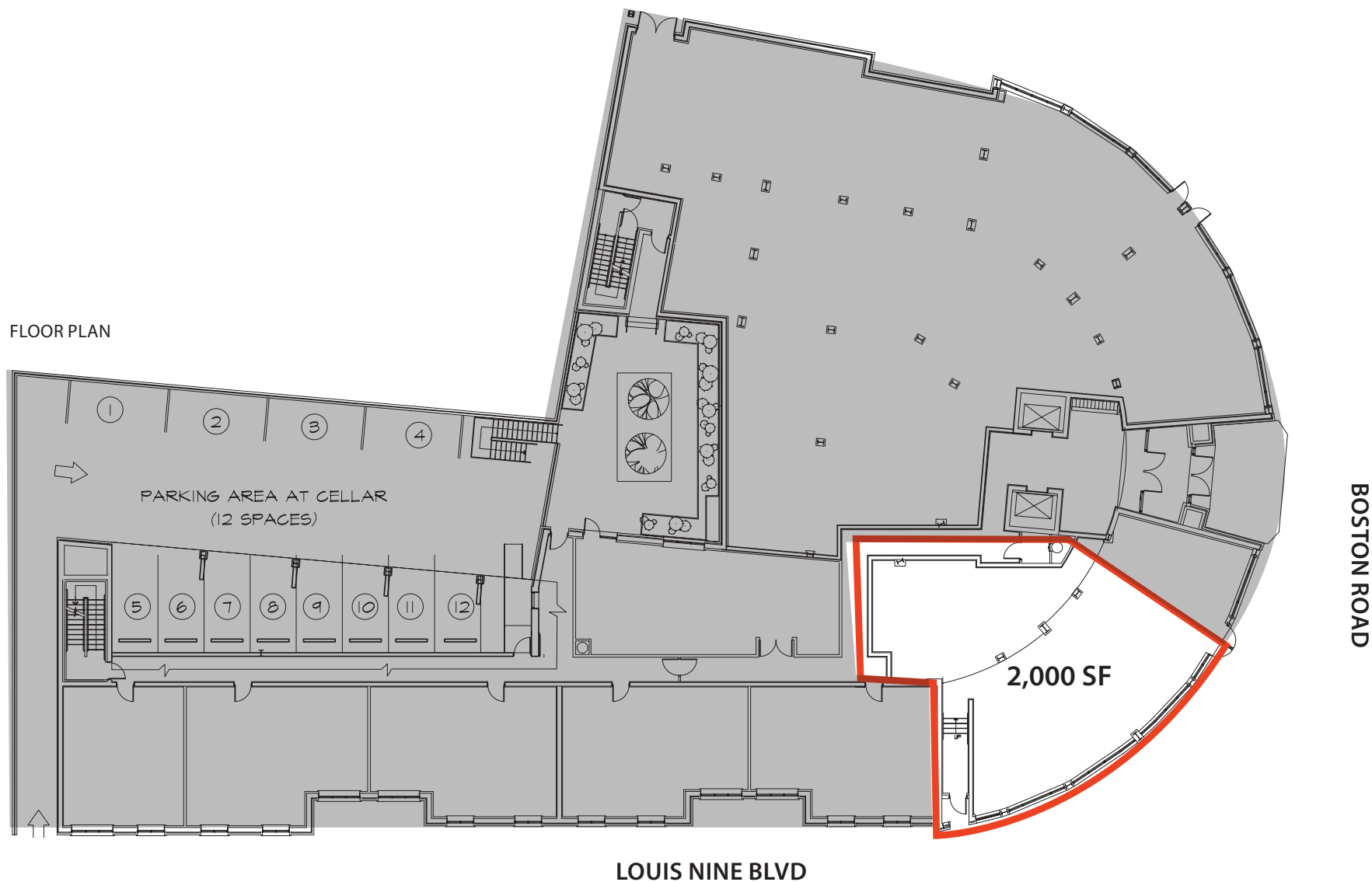


1490

BOSTON ROAD

BETWEEN STEBBINS AVENUE & LOUIS NINE BLVD  
CROTONA PARK EAST | BRONX

FLOOR PLAN



CONTACT OUR BROKERS FOR MORE INFORMATION:



All information supplied in this marketing presentation and/or flyer is from sources deemed reliable and is furnished subject to errors, omissions, modifications, removal of listings from sale/lease and to any listing condition. Any square footage, dimensions, floor plans and/or technical data set forth are approximations and are subject to further elaboration/confirmation.

**ELI YADID**  
EYadid@ksrny.com  
**917.770.9173**

**MARC SITT**  
MSitt@ksrny.com  
**917.757.8863**