

# 345 7th Avenue

Between 29th & 30th Street | Midtown

**KSR**  
KASSIN SABBAGH REALTY

SPACE A

SPACE B





# 345

## 7th Avenue

BETWEEN 29TH & 30TH STREET  
MIDTOWN

### Space A:

Size:

Ground 1,500 SF  
Mezzanine 1,500 SF  
Lower Level 975 SF

Frontage:

Space A:  
25 Feet

### Space B:

Size:

Ground 450 SF  
Mezzanine 425 SF  
Lower Level 625 SF

Frontage:

Space B:  
15 Feet

### Property Highlights:

Possession: ASAP

### Space A:

- Vented via percip
- All uses considered

### Space B:

- Formerly Gong Cha
- Built out with all the equipment in place

### Transportation:



All information supplied in this marketing presentation and/or flyer is from sources deemed reliable and is furnished subject to errors, omissions, modifications, removal of listings from sale/lease and to any listing condition. Any square footage, dimensions, floor plans and/or technical data set forth are approximations and are subject to further elaboration/confirmation.



David Green

DGreen@ksrny.com  
515.320.0260

Ike Bibi

IBibi@ksrny.com  
347.417.2860

Carolina Aziz

CAziz@ksrny.com  
516.640.6961

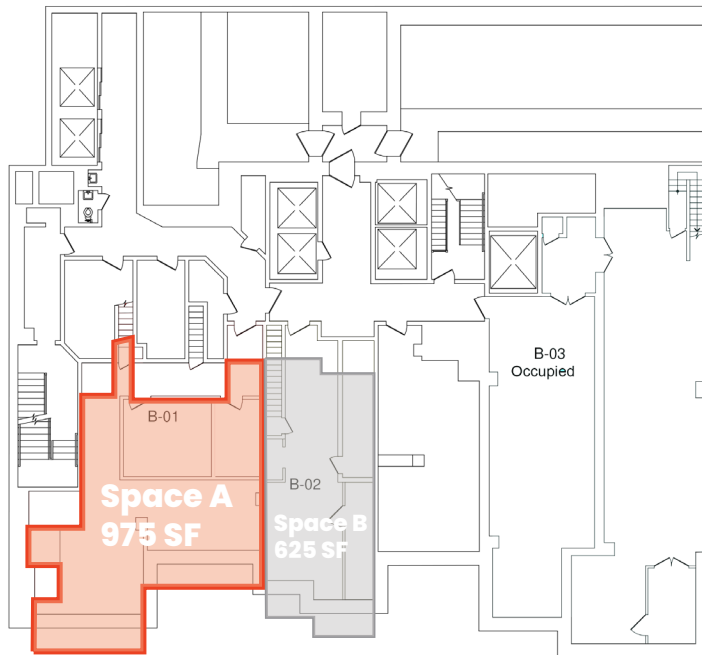
345

# 7th Avenue

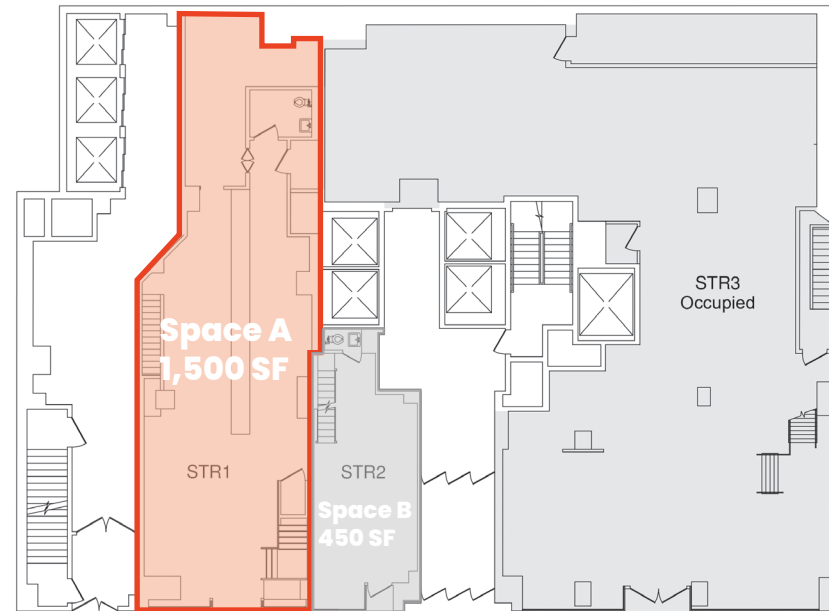
BETWEEN 29TH & 30TH STREET

MIDTOWN

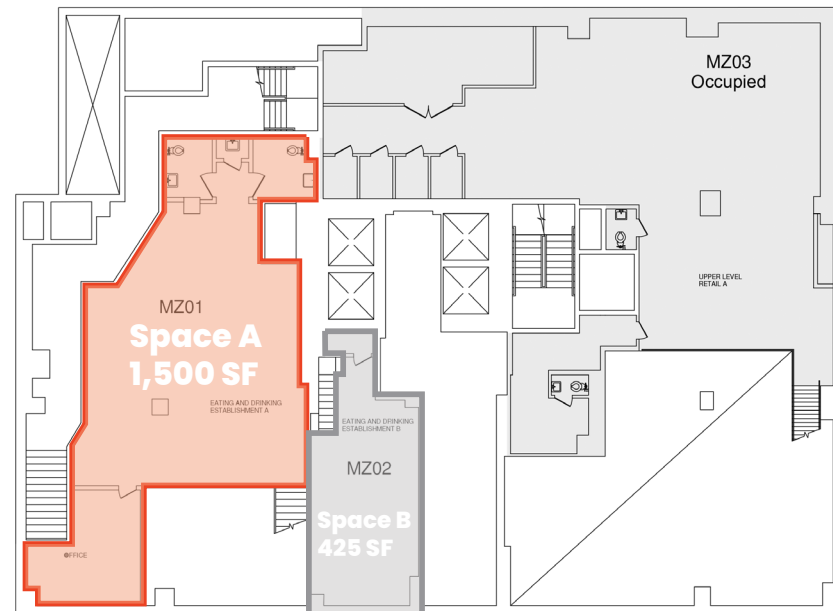
## Lower Level



## Ground Floor



## Mezzanine



CONTACT OUR BROKERS FOR MORE INFORMATION:

*David Green*

DGreen@ksrny.com  
515.320.0260

*Ike Bibi*

IBibi@ksrny.com  
347.417.2860

*Carolina Aziz*

CAziz@ksrny.com  
516.640.6961

All information supplied in this marketing presentation and/or flyer is from sources deemed reliable and is furnished subject to errors, omissions, modifications, removal of listings from sale/lease and to any listing condition. Any square footage, dimensions, floor plans and/or technical data set forth are approximations and are subject to further elaboration/confirmation.

