

# 407 REMSEN AVENUE

BETWEEN REMSEN AVENUE & KINGS HIGHWAY | EAST FLATBUSH

**KSR**  
KASSIN SABBAGH REALTY



# 407 REMSEN AVENUE

BETWEEN REMSEN AVENUE & KINGS HIGHWAY | EAST FLATBUSH

## PROPERTY HIGHLIGHTS

- High traffic intersection of Remsen Avenue & Kings Highway which sees over 50,000 vehicles per day
- New mixed use development featuring 7 stories of apartments
- Centrally located between two major hospitals (Kings County Hospital & Brookdale Hospital)

**SIZE** Up to 9,000 SF  
+ 3,000 Mezzanine SF

**FRONTAGE:** 92'

**POSSESSION:** 8-12 Months

**TRANSPORTATION:** B7 B17 B47

## NEIGHBORS:



**RAC** Rent-A-Center



CONTACT OUR BROKERS FOR MORE INFORMATION:



All information supplied in this marketing presentation and/or flyer is from sources deemed reliable and is furnished subject to errors, omissions, modifications, removal of listings from sale/lease and to any listing condition. Any square footage, dimensions, floor plans and/or technical data set forth are approximations and are subject to further elaboration/confirmation.

**ALBERT MANOPLA**  
AManopla@ksrny.com

212.380.8369

**GEORGE SKALIARINIS**  
GeorgeS@ksrny.com

347.844.0183

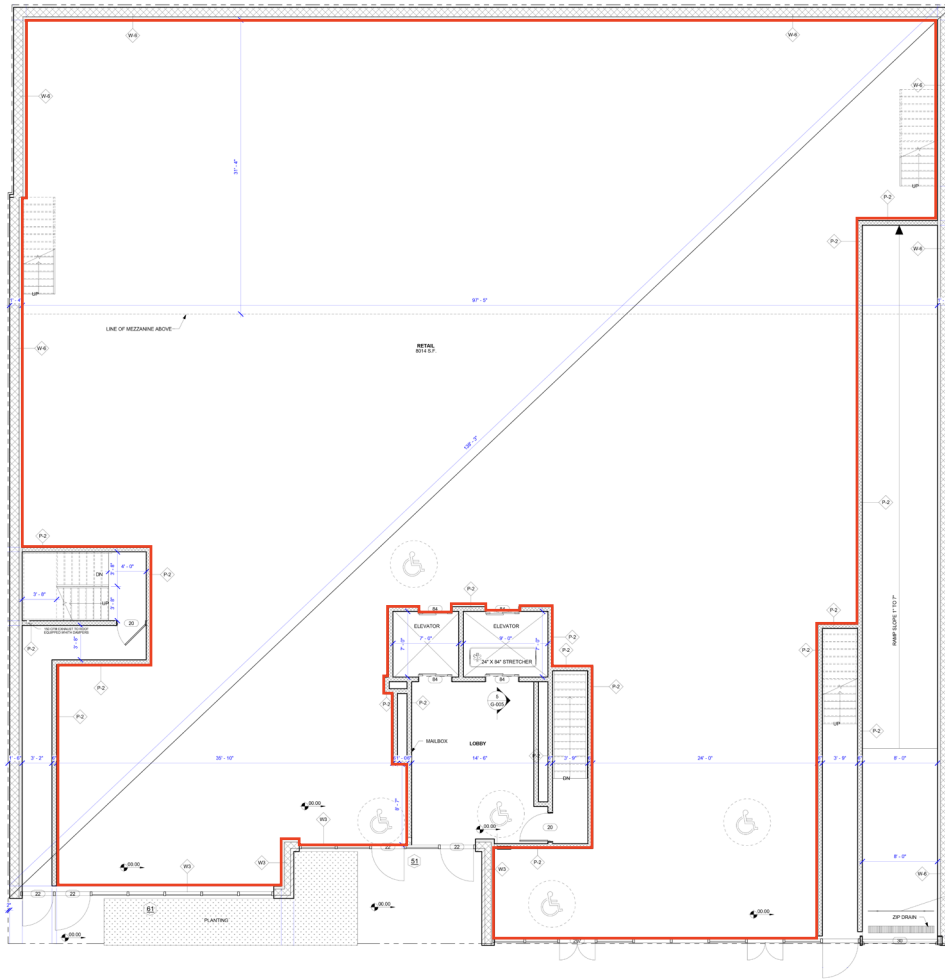
**MARK GALLUCCI**  
Mgallucci@ksrny.com

718.551.5387

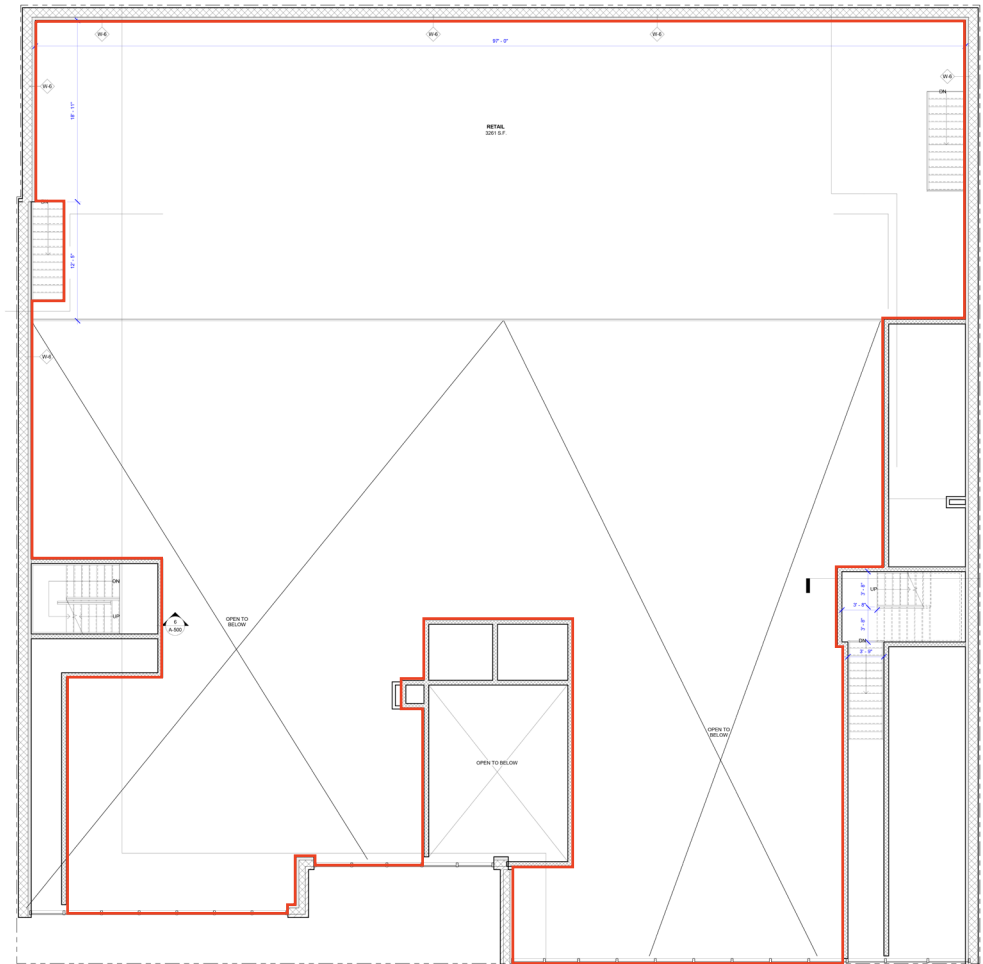
# 407 REMSEN AVENUE

BETWEEN REMSEN AVENUE & KINGS HIGHWAY | EAST FLATBUSH

## Ground Floor | 9,000 SF



## Mezzanine | 3,000 SF



CONTACT OUR BROKERS FOR MORE INFORMATION:

**ALBERT MANOPLA**  
AManopla@ksrny.com

**212.380.8369**

**GEORGE SKALIARINIS**  
GeorgeS@ksrny.com

**347.844.0183**

**MARK GALLUCCI**  
Mgallucci@ksrny.com

**718.551.5387**

All information supplied in this marketing presentation and/or flyer is from sources deemed reliable and is furnished subject to errors, omissions, modifications, removal of listings from sale/lease and to any listing condition. Any square footage, dimensions, floor plans and/or technical data set forth are approximations and are subject to further elaboration/confirmation.

