

SOLID Wall

Based on SOLID Bifacial

Plain and
simple
installation

Fast system
assembly
time

Invisible
mounting
materials

Sustainable
and
affective

Fits all
wall types



SOLI  **TEK**

Mokslininku str. 6A,
Vilnius 08412, Lithuania
Tel. +370 5 263 8774
info@solitek.eu
www.solitek.eu

60 cells

⚡ 350W

30

Product
warranty

87%

Power
guarantee

30

Efficiency
guarantee

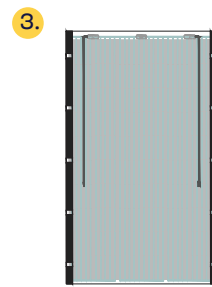
Construction drawing



1. Fixing bracket is fixed to the wall.

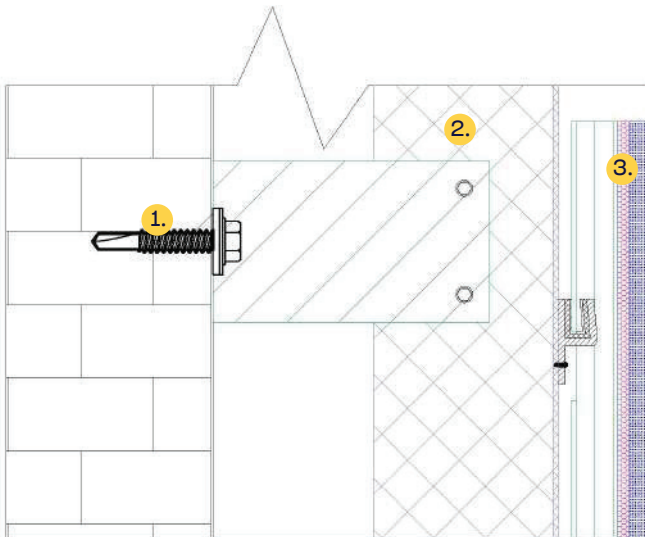


2. Standard T or L profile as guiding rail with preassembled hooks is fixed to the bracket

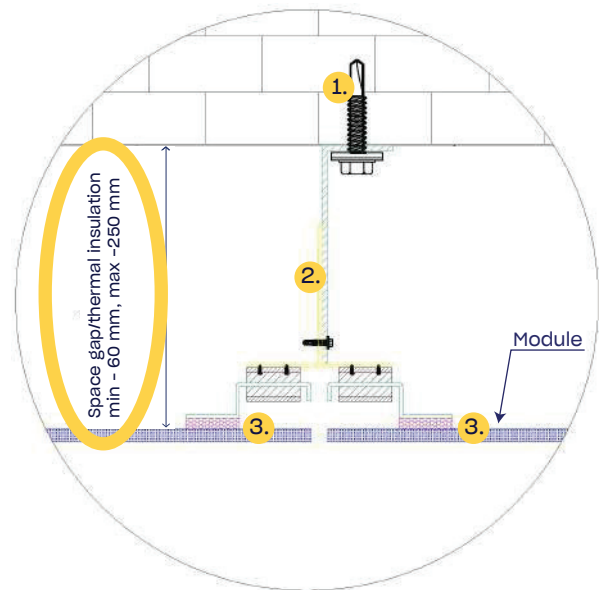


3. Frameless Glass/Glass PV module with special glued profiles on the back face is attached on the hook

Vertical section



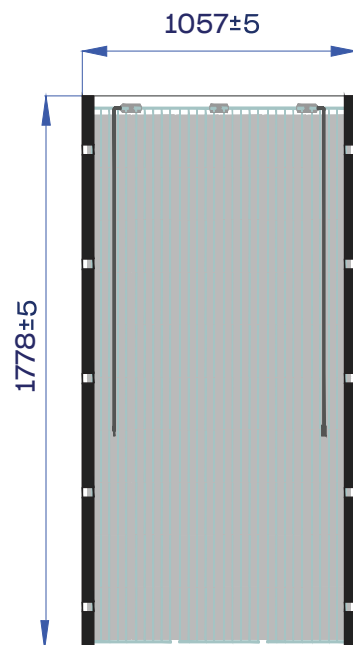
Horizontal section



Mounting construction

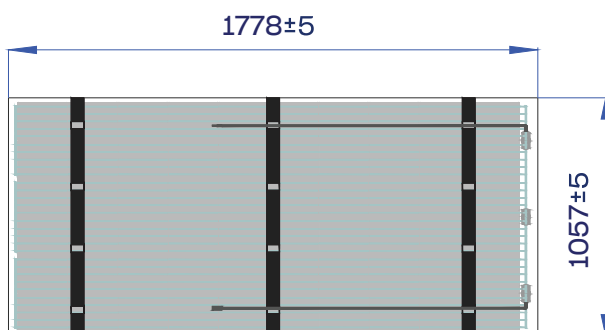
- Step No. 1. Positioning and fixing of brackets
- Step No. 2. Fixing T/L profiles
- Step No. 3. Installing PV panels

Portrait



60 cells 2400 Pa wind load

Landscape



60 cells 2400 Pa wind load